

The February Fine Art & Antiques Auction, 23rd Feb, 2023 09:30

- 1 † Sandra Blow (1925 - 2006), Untitled Collage Study, Sandra Blow Estate blind stamp, and ink stamp on the reverse, mixed media on paper, 28 x 30 cm, framed and glazed, framed size 41.5 x 44 cm
Purchased from Westcott's Gallery, St Ives, 2012; One of four collages exhibited at the Royal Academy of Arts; Illustrated on page 13 of the Hayward Gallery Annual 1978. **£1,000-1,500**



- 2 † Donald McIntyre (1923-2009) British, 'The Estuary', oil on board, monogram signature to lower right corner, 24 cm x 59.5 cm in a contemporary painted frame.
Private collection **£1,400-1,800**



- 3 Manner of Peter Paul Rubens, The Massacre of the Innocents, unsigned, very large oil on canvas, 118 cm x 169 cm in an ebonised and gilt frame.
By Family Descent **£5,000-7,000**



- 4 Ernest Higgins Rigg (Staithes Group 1868-1947), 'Whitby Harbour', oil on panel, signed to lower left corner, 31 cm x 38.5 cm in a gilt frame. **£1,000-1,500**



- 5 20th Century Japanese School, study of a nude at a dressing table, signed, oil on canvas, 79 x 64 cm, framed **£200-300**



The February Fine Art & Antiques Auction, 23rd Feb, 2023 09:30

- 6 Circle of Thomas Hudson (1701-1779), a three-quarter length portrait of 'Mr Framlingham', in blue velvet frock coat and cream waistcoat, 'Age 35, circa 1730', oil on canvas, 115 cm x 89.5 cm in a gilt frame. **£800-1,200**



- 7 Henry Shirley (fl. 1836 - 1870), Figures resting from the harvest with a landscape beyond, signed, oil on canvas, 34.5 x 57.5 cm, framed **£500-800**



- 8 John Atkinson (Staithes Group, 1863-1924), rural scene with hay cart and horses, watercolour, signed to lower right corner, 27 cm x 38 cm framed and glazed. **£200-300**



- 9 T.Wall? (20th century), study of a young deer in woodland, watercolour indistinctly signed. **£120-180**



- 10 Ferdinand Max Bredt (1868-1921), pair of portraits of children, one signed the other framed, oil on board, 61.5 x 25.5 cm (Qty: 2) **£300-500**



The February Fine Art & Antiques Auction, 23rd Feb, 2023 09:30

- 11 19th century Continental school, a moonlit Lake, indistinctly signed (A. Bauer?), dated 1859, oil on panel, 35 cm x 55 cm in a gilt frame. **£200-300**



- 12 Arthur A Friedenson (Staithes Group 1872-1955), rural landscape, horses beside a lake, oil on canvas, signed to lower left corner, 45 cm x 59.5 cm in a gilt frame. **£200-300**



- 13 Lea Lafugie (1890 - 1972), Tibetan ceremonial costume designs, a pair, signed and dated Hemis 1926, watercolour and bodycolour, 33cm x 26.5cm **£300-500**



- 14 William Watson Jnr. (1831 - 1921), Sheep and Cattle by riverbanks, a pair, signed and dated 1889, framed and glazed, oil on canvas, 25 x 35 cm (2) **£300-500**



- 15 Oliver Heywood (British 1920-1992) 'Fiscal Shrike, Menengai', oil on canvas, signed and dated 1979, 48 cm x 83 cm A private estate. **£200-300**



The February Fine Art & Antiques Auction, 23rd Feb, 2023 09:30

- 16 Attributed to Vladimir Andreevic Belov (b.1923) Russia, impressionist style view of a river and buildings, oil on canvas, 49 cm x 68.5 cm in a wooden frame. **£400-600**



- 17 † George Cunningham (1924 - 1996), '35 Outworkers Yard, Carver Street', exhibition label verso Renshaw Hall May 2004, pen sketch on the back of three Master Job Cards, 24.5 x 56.5 cm, mounted unframed; two sheet view of Carbrook, 21 x 49 cm; Four sheet views of Taddington, Three sheet view of Hulland with additional text from the artist, and a four sheet views of Pilsley, all mounted on foam board, unframed. (Qty: 5) **£150-250**



- 18 Hussein Salim (b.1966) Sudanese, two large abstract studies, mixed media on canvas, each 151 cm x 135 cm, unframed. (Qty: 2) **£700-900**



- 19 Attributed to Alexander Marshal (c1620 - 1682), Two studies of flowers tied with ribbon, watercolour on paper mounted on panel, 20.5 x 15.5 cm, in 18th century carved giltwood and glazed frames

Similar examples of these works, but on vellum, are in the collection of the British Museum.

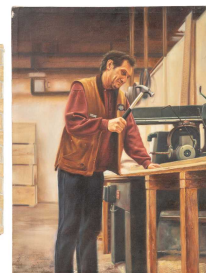
Alexander Marshal was a merchant, gentleman gardener and botanist of rare plants, as well as an artist. He cultivated a garden in Fulham for his landlord John Tradescant and painted at least four albums of flower and insect studies, many of species that were new to Northern Europe or recently discovered. None of these works was commercially published and they are thought to have been formed for the enjoyment of his friends and fellow horticulturists. His 'Florilegium' was presented to King George IV and is in the Royal Collection, and other examples of his work are in the British Museum. Only a small number of his other works are known to exist.

£800-1,500



The February Fine Art & Antiques Auction, 23rd Feb, 2023 09:30

- 20 † Darren Baker (b.1976), Workman at his bench, unsigned, oil on canvas, 58 x 43.5 cm, unframed, and Seated on a Balcony, oil on canvas, unsigned, 40.5 x 51 cm, unframed
Presented to the vendor by the artist **£400-600**



- 21 William Beattie Brown RSA (1831-1909) Scottish, 'Garmouth on the Spey', landscape with cattle, oil on panel, signed to lower right corner, 24.3 cm x 34 cm in a gilt frame. **£200-300**



- 22 20th-century Russian school, still life study of pink roses in a vase, oil on canvas, 45.5 cm x 47 cm in a wooden frame. **£300-500**



- 23 † Donald McIntyre (1923-2009) British, 'Boats, Dull Day', oil on board, monogram to lower left corner, 17 cm x 19.5 cm in a wooden frame.
Private collection. **£600-800**



- 24 George Knight (fl. 1872-1892) British, 'Off the Harbour', two oils on canvas, similar scenes, 38.5 cm x 59 cm in gilt frames.
(Qty: 2) **£400-600**



The February Fine Art & Antiques Auction, 23rd Feb, 2023 09:30

- 25 AGE, (20th century) Woman & child of Meggio, S.E. Tibet, signed AGE and dated 1935, inscribed 'After the photo by G Sherriff', a further watercolour of a Tibetan child, also after the photo by G. Sherriff; and a watercolor of a Tibetan gentleman, in silk jacket, signed AGE and dated 1935, two x 27.5cm x 20cm and 17cm x 12cm **£100-150**



- 26 † Heather Budgett (b.1950) British, 'Bicester & Whaddon Chase Droughounds', 2005, oil on panel, signed and dated to lower right corner, 39 cm x 58.5 cm in a gilt frame. **£150-250**



- 27 † Peter Kotka (b.1951), 'Rhone with Fruit & Cheese', 1997, still life oil on canvas, 49.5 cm x 39 cm in a wooden frame. **£300-500**



- 28 † Fred Uhlman (1901-1985) German, 'Churchyard', oil on board, signed to lower left corner, 48 cm x 62 cm in a wooden frame. **£800-1,200**



- 29 Ernest Procter (1886-1935), Eglise St. Sulpice, Paris, signed, watercolour on board, 37 x 27 cm, and another by the same hand of a Parisian street, unsigned watercolour on board, 37 x 38 cm, both framed and glazed. (Qty: 2) **£300-500**

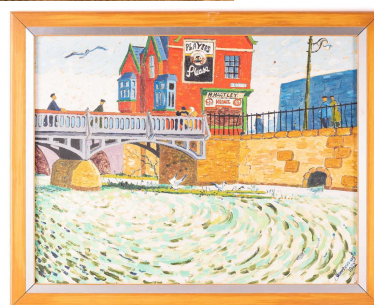


The February Fine Art & Antiques Auction, 23rd Feb, 2023 09:30

- 30 James Webb (c.1825 - 1895), Approaching the lock gates, signed, oil on panel, 30.5 x 25 cm, later framed **£800-1,200**



- 31 † Joe Scarborough (b.1938), 'The Bridge at Nursery Street', signed and dated 1972, oil on canvas, framed, 42 x 55 cm. Includes a handwritten description of the painting by the artist. Offered exclusively by Joe Scarborough **£2,000-3,000**



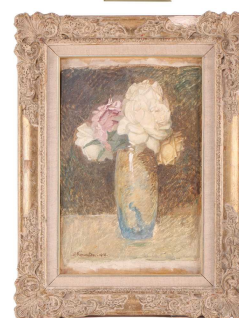
- 32 D. Cordezo (late 19th/early 20th century) Spanish?, figures on a lane with village and mountains beyond, signed, oil on canvas, 61 x 92 cm, framed **£200-300**



- 33 George Cunningham, (1924 - 1996), various ink and pen sketches on loose paper and notebooks, some with text on the reverse, 'By George' and 'More George' Original handwritten manuscripts for his illustrated biographical books of Sheffield, other handwritten manuscripts by the artist including notes and diary entries, five limited edition plates with George Cunningham designs, and other ephemera related to the artist. Removed from the artist's studio **£150-250**



- 34 † Arthur Kynaston (1904-1966) British, 'Study of Roses', oil on card, appears unfinished, signed to lower right corner, 40 cm x 26 cm in a wooden frame. **£250-350**



The February Fine Art & Antiques Auction, 23rd Feb, 2023 09:30

- 35 Solomon Joseph Solomon (1860-1927), Preliminary study for the Commons Petitioning Queen Elizabeth I to Marry, unsigned, oil on board, 54 x 58 cm, framed.

The composition of this painting bears similarities with the figures standing in front of the monarch in the final painting, which is part of the Parliamentary Art Collection. The painting was commissioned by Lord Swaythling in 1911 and depicts contemporary politicians attending Queen Elizabeth I. **£700-1,000**



- 36 † Sir Herbert James Gunn (1863-1964) British, a boat beneath a bridge on the Thames, soil on panel, signed and dated 1912, 16.5 cm x 24 cm in a gilt frame. Private collection. **£600-800**



- 37 Hussein Salim (b.1966) Sudanese, two abstract studies on canvas, mixed media, 75 cm x 80 cm and 75 cm x 75 cm, each signed and dated 2005, unframed. (Qty: 2) **£250-350**



- 38 † Gerald Norden (1912-2000), Still life with child's violin, signed and dated '89, The Catto Gallery label verso, oil on board, 47.5 x 58.5 cm, framed **£200-300**



- 39 † George Cunningham (1924-1996), Landscape with Sheffield in the distance, unsigned, watercolour, 24 x 29 cm, framed and glazed, Mine ruins, unsigned, pen and watercolour, 20 x 25 cm; and six other watercolours by the same artist, including one unframed.

(Qty: 8)

Removed from the artist's studio **£150-250**



The February Fine Art & Antiques Auction, 23rd Feb, 2023 09:30

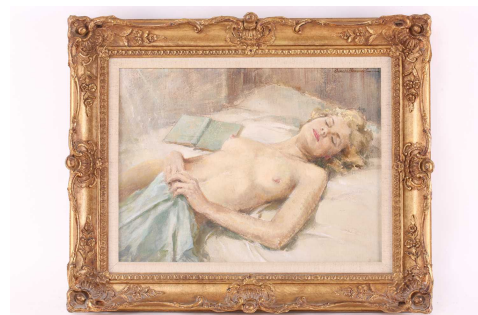
- 40 Peter Perdriau (b.1952) Australian, Yachts outside Sydney Opera House, signed, oil on paper mounted on board, 80 x 120 cm, framed and glazed, frame 104 x 143.5 cm **£200-300**



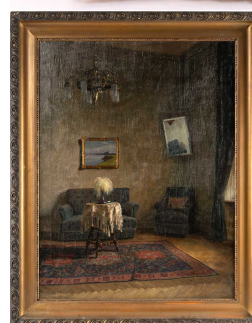
- 41 † George Cunningham (1924 - 1996), panoramic views of Sheffield streets and the Peak District, en plein air ink sketches on paper mounted on foam board or board, unframed various sizes, 18 in total.
(Qty: 18)
Removed from the artist's studio **£200-300**



- 42 † Arnold Beauvais (1886-1984) British, 'Sommeil', a study of a sleeping female nude, oil on panel, signed to top eight corner, 29 cm x 38.5 cm in a gilt frame. **£300-500**



- 43 Tibor Szontagh (1873-1930 Hungarian), Sparse room interior, signed, oil on canvas, 82.5 x 62.5 cm, framed **£200-300**

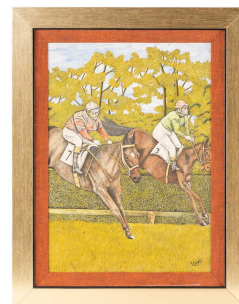


- 44 John Inglis (1867-1946), a shepherd on a lane on a summer's day, oil on canvas, signed to lower right corner, 59 cm x 49 cm in a wooden frame. **£400-600**

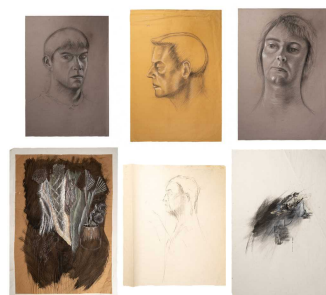


The February Fine Art & Antiques Auction, 23rd Feb, 2023 09:30

- 45 † James Lloyd (1904 - 1974), *Clearing the Gates*, signed, gouache, later framed and glazed, 52 x 37 cm
Purchased from OriginalArtBroker.com with a certificate of authenticity. **£500-700**



- 46 † Darren Baker (b.1976), *'The Post'*, watercolour and mixed media on paper, unsigned, 84 x 59 cm, unframed; Still life study, watercolour on brown paper, unsigned, 75.5 x 53 cm, unframed; and three portrait studies, pencil and chalk, unsigned
(Qty: 5)
Presented to the vendor by the artist **£300-500**



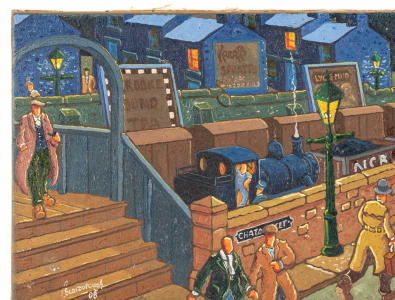
- 47 Alexander Williams RHA (1846-1930) Irish, lake and mountain landscape, oil on board, signed to lower left corner, 19 cm x 37.5 cm in a gilt frame. **£300-500**



- 48 † Arnold Beauvais (1886-1984) British, *'The Tide Mill, Woodbridge'*, oil on canvas, signed and dated '67, 56 cm x 74 cm in a gilt frame. **£200-300**



- 49 † Joe Scarborough (b1938), *The Station*, signed and dated '08, oil on canvas, unframed, 30 x 40 cm, with exhibition label verso. Includes a handwritten description of the painting by the artist.
Offered exclusively by Joe Scarborough. Please click [here](#) for our website article, containing further details and a video interview with the artist. **£1,500-2,000**



The February Fine Art & Antiques Auction, 23rd Feb, 2023 09:30

- 50 † George Hosotte (b 1936 French), Neige à Saint Moré, signed and dated 1986, inscribed verso, watercolour, framed and glazed, 47 x 47 cm, frame - 75.5 x 75.5 cm, with catalogue for 'Georges Hosotte De Maulnes à Vézelay Les chemins des hommes' **£300-500**



- 51 19th century British School, Cattle and sheep in a landscape with river beyond, unsigned, framed, oil on canvas, 46 x 57 cm **£200-300**



- 52 † Peter Joyce (b.1964), 'Mupe', signed inscribed and dated November 1991 verso, acrylic on canvas, 30.5 x 25.5 cm, framed, frame 41 x 35.5 cm **£200-300**



- 53 † Bertrand Dorny (1931 - 2015) French, 'Bossage', signed in pencil, artist's proof, colour aquatint, 49 x 59 cm, framed and glazed, frame 84 x 91 cm **£200-300**



- 54 † After Pablo Picasso (1881 - 1973) 'Fillette Couronnee au Bateau', Picasso Estate Collection limited edition colour lithograph, signed and numbered in pencil 'Collection Marina Picasso, 457/500', with blind stamps 'A Limited Edition After A Work By Pablo Picasso' & 'Circular Grid', printed verso in English & French 'Limited edition re-creation of an oil on canvas entitled "Fillette Couronnee au Bateau" by Pablo Picasso created on June 12, 1939, Approved by the Heirs of Pablo Picasso' and '© National Machine Systems, Inc, 1982', on Arches paper, with certificate of authenticity, Image approximately 57.5cm x 46cm, Overall 75cm x 54.3cm A private estate. **£200-300**



The February Fine Art & Antiques Auction, 23rd Feb, 2023 09:30

- 55 † Güler Ates (b. 1977) Turkish, 'Woman Under a Red Veil' (2012), signed and numbered 4/15 verso, limited edition Archival Digital Print, framed, 79 x 45 cm, with a certificate of authenticity signed by the artist **£200-300**



- 56 Walter Whall Batiss (1906-1982, South African) 'Don't', signed, inscribed and numbered 9/30 in pencil, colour screenprint, 63 x 44 cm, framed, frame 85 x 64.5 cm **£300-500**



- 57 † After Pablo Picasso (1881 - 1973) 'Femme au Fauteuil Canne', Picasso Estate Collection limited edition colour lithograph, signed and numbered in pencil 'Collection Marina Picasso, 25/500', with blind stamps 'A Limited Edition After A Work By Pablo Picasso' & 'A Bull', printed verso in English & French 'Limited edition re-creation of an oil on canvas entitled "Femme au fauteuil Canne" by Pablo Picasso created on May 21, 1939, Approved by the Heirs of Pablo Picasso' and '©James E Brown D/B/AJ & J Master Art Works, 1982', on Arches paper, with certificate of authenticity, Image 50cm x 41.5cm, Overall 75.8cm x 55.7cm **£200-300**



- 58 † After Pablo Picasso (1881 - 1973) 'Paysage de Dinard', Picasso Estate Collection limited edition colour lithograph, signed and numbered in pencil 'Collection Marina Picasso, 27/500', with blind stamps 'A Limited Edition After A Work By Pablo Picasso' & 'Dtamerin' printed verso in English & French 'Limited edition re-creation of an oil on canvas entitled "Paysage de Dinard" by Pablo Picasso created 1922, Approved by the heirs of Pablo Picasso' and '© Mrs. Marilyn K Nathan, 1982', on Arches paper, with certificate of authenticity, Image approximately 43cm x 52.3cm, Overall 55.4cm x 75cm A private estate. **£200-300**



- 59 A collection of five early unframed monochrome engraved maps, comprising 'Britannia Saxonica' by Robert Morden (1650-1703), 37.5 cm x 30.5 cm with margins, 'South Wales' and 'North Wales', from the 1753 edition of Camden's Britannia, each 35 cm x 42.5 cm, 'A New and Correct Map of North Wales', 36 cm x 43 cm with margins (also after Morden), and 'Merionith' after Saxon & Kip, 26 cm x 32 cm. (Qty: 5) **£300-500**



The February Fine Art & Antiques Auction, 23rd Feb, 2023 09:30

- 60 † Laurence Stephen Lowry RA (1887-1976) British, 'Street Scene', limited edition print, pencil signed to the margin, Fine Art Trade Guild blindstamp to left corner, numbered 662, 28.5 cm x 22 cm glazed in a gilt frame. **£2,000-3,000**



- 61 † After David Jones (1895 - 1974), March, wood engraving, Wolseley Fine Arts label verso, 9 x 8 cm, framed and glazed, frame 32 x 22cm, with 'David Jones in Ditchling' catalogue; Paul Catherall (b.1967), Pallant House Gallery, signed dated 2006 and numbered 36/250 in pencil, four colour lino print, 29 x 22 cm, framed and glazed, frame 43 x 33 cm; Peter Iden (1945 - 2012), 'Downland Forms, Winter', signed inscribed and numbered 2/195 in pencil, colour print, 61 x 61 cm, framed and glazed, frame 81.5 x 81 cm (Qty: 3) **£150-250**



- 62 † Laurence Stephen Lowry RA (1887-1976) British, 'The Family', limited edition print, pencil signed to the margin, Fine Art Trade Guild blindstamp to lower left corner, from an edition of 850. **£1,500-2,000**



- 63 † Eduardo Paolozzi (1924 - 2005), Poster for Habitat, additionally inscribed in gold ink 'Made for Habitat to celebrate the September 1973 opening of their stores in Kings Road London & Tour Montparnasse Paris, Eduardo Paolozzi', dedicated in the border 'For Maurice, Eduardo 1973', image 80 x 52 cm, framed and glazed, frame 89.5 x 61.5 cm This poster is dedicated to Maurice Libby, who arranged the displays for the original Habitat store in Fulham Road and subsequently for their new flagship store in Kings Road. **£200-300**



- 64 † Victor Pasmore, Untitled 1974, monogrammed Printer's Proof, aquatint with etching and screenprint, Issued edition of 55 plus 20 proofs. Printed at White Ink Ltd, issued by Marlborough Gallery Inc., New York 1974, image 38 x 37 cm, sheet 51 x 54, framed and glazed, frame 65 x 66 cm, bears a label from William Weston Gallery verso dated 2003 The family of the studio printer then William Weston Gallery Illustrated in Catalogue of Graphics, Norbert Lynton **£600-800**

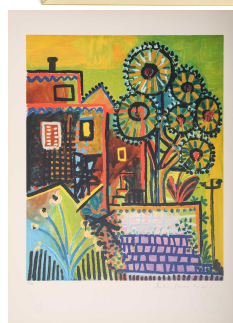


The February Fine Art & Antiques Auction, 23rd Feb, 2023 09:30

- 65 † Laurence Stephen Lowry RA (1887-1976) British, 'The Meeting Point', limited edition print, pencil signed to the margin, Fine Art Trade Guild blindstamp to lower left corner, number 343, 49 cm x 71 cm framed and glazed. **£1,500-2,000**



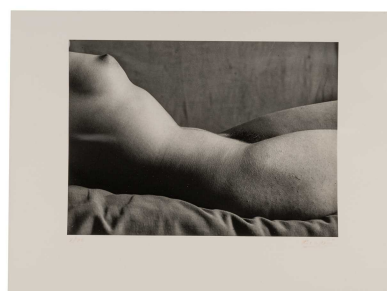
- 66 † After Pablo Picasso (1881 - 1973) 'Paysage', Picasso Estate Collection limited edition colour lithograph, signed and numbered in pencil 'Collection Marina Picasso', number 143/500, with blindstamps 'A Limited Edition After A Work By Pablo Picasso' & 'Dtamerin', printed verso in English & French 'Limited edition re-creation of an oil on canvas entitled "Paysage" by Pablo Picasso created in 1937, Approved by the Heirs of Pablo Picasso' & '© Stirling Silliphant 1980', on Arches paper, with certificate of authenticity, 73.5cm x 54cm A private estate. **£200-300**



- 67 † Johnny Friedlaender (1912 - 1992) German/French, 'Composition au Point Noir', signed in pencil and numbered 23/95, inscribed verso, etching and aquatint, 49 x 39, framed and glazed, frame 89 x 73 cm, and another by the same artist, 'Bleu Rouge Noir', signed in pencil and numbered 58/65, inscribed verso, etching and aquatint, 57.5 x 44 cm, framed and glazed, frame 89 x 73 cm (Qty: 2) **£300-500**



- 68 † Brassai (1899-1994) Hungarian French, 'Nu no.49 1931' signed and numbered 4/40 in faded red pen, gelatin silver print, Brassai copyright and Wolfgang Wittrock Kunsthandel stamps verso, image 20.5 x 28 cm, sheet 30 x 40 cm, in a later frame. **£3,000-5,000**

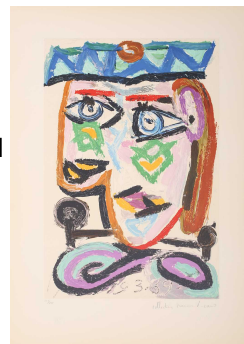


- 69 After Ronald King (b.1932), Alphabet I, Hand-made paper, published and produced by Circle Press Guildford, 1983, framed and glazed, frame 77 x 53 cm; After Bridget Riley (b.1931), Nataraja 1993, unsigned print, 48 x 67 cm, framed and glazed, frame 85 x 103.5 cm (Qty: 2) **£150-250**



The February Fine Art & Antiques Auction, 23rd Feb, 2023 09:30

- 70 † After Pablo Picasso (1881 - 1973) 'Femme au Fauteuil Canne', Picasso Estate Collection limited edition colour lithograph, signed and numbered in pencil 'Collection Marina Picasso, 20/500', with blind stamps 'A Limited Edition After A Work By Pablo Picasso' & 'A Bull', printed verso in English & French 'Limited edition re-creation of an oil on canvas entitled "Femme au fauteuil Canne" by Pablo Picasso created on May 21, 1939, Approved by the Heirs of Pablo Picasso' and '©James E Brown D/B/AJ & J Master Art Works, 1982', on Arches paper, with certificate of authenticity, Image 50cm x 41.5cm, Overall 75.8cm x 55.7cm
A private estate. **£200-300**
- 71 † John Humphrey Spender (1910 - 2005), Cornish Tin Mines, signed and dated '71 in pencil, lithograph, framed and glazed, 40 x 59 cm; Attributed to John Bertrand Burgess (1830 - 1897), Self Portrait aged about 16 years, bears signature in pencil, labelled verso, watercolour, framed and glazed, 27.5 x 20 cm; After Peter Strausfeld (1910 - 1980), film poster for T.S. Eliot's Murder in the Cathedral directed by George Hoellering, printed for the Academy Cinema, Oxford Street, framed and glazed, 75 x 49 cm
(Qty: 3) **£200-300**
- 72 A set of four late 19th century prints of Dutch Heraldic coats of arms, from Johannes Baptist Rietstap's "Wapenboek van den Nederlandschen Adel", published 1883-87, each sheet containing six arms, 41.5 x 28 cm, framed and glazed; After Jacopo Gibbs, A Perspective View of St Martin's Church, engraved by H. Hulsbergh, 63 x 45 cm, another view of the church with alternative portico, 44 x 27 cm and four engraved studies of church spires
(Qty: 10)
The architectural prints purchased from 'The Buildings of London' exhibition presented by Ben Weinreb and Priscilla Wrightson in 1983. Exhibition catalogue included with the lot.
£150-250
- 73 † After Pablo Picasso (1881 - 1973) 'Femme au Beret', Picasso Estate Collection limited edition colour lithograph, signed and numbered in pencil 'Collection Marina Picasso, 153/500', with blind stamps 'A Limited Edition After A Work By Pablo Picasso' & 'G', printed verso in English & French 'Limited edition re-creation of an oil on canvas entitled "Femme au Beret" by Pablo Picasso created in 1939, Approved by the Heirs of Pablo Picasso' and 'Artvestors', on Arches paper, with certificate of authenticity, Image approximately 55cm x 37.4cm, Overall 73.4cm x 52.7cm
A private estate. **£200-300**

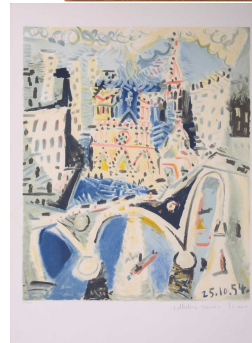


The February Fine Art & Antiques Auction, 23rd Feb, 2023 09:30

- 74 † Laurence Stephen Lowry RA (1887-1976) British, 'Crime Lake', limited edition print, signed in pencil in the margin, with Fine Art Trade Guild blind stamp, numbered 493 from the edition of 500, 48 cm x 61.5 cm, framed and glazed. **£2,000-3,000**



- 75 † After Pablo Picasso (1881 - 1973) 'Notre Dame', Picasso Estate Collection limited edition colour lithograph, signed and numbered in pencil 'Collection Marina Picasso, 232/500', with blind stamps 'A Limited Edition After A Work By Pablo Picasso' & a motif, printed verso in English & French 'Limited edition recreation of an oil on canvas entitled "Notre Dame" by Pablo Picasso created October 25, 1954, Approved by the Heirs of Pablo Picasso' and '© Beatrice Dwork 1979', on Arches paper, with certificate of authenticity, Image approximately 60cm x 50cm, Overall 75.5cm x 55.5cm
A private estate. **£200-300**



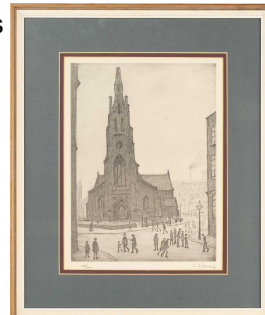
- 76 † Laurence Stephen Lowry RA (1887-1976) British, 'An Industrial Town', limited edition print signed in pencil, numbered 11/500, mounted with a photocopied letter on Lowry headed paper explaining that he could not sign a print until 1975, also mounted with a photocopy of a cheque from L.S. Lowry dated January 1976, image 43.5 x 59.5 cm, frame 84 x 75.5 cm **£1,200-1,800**



- 77 † Claire Leighton (1898-1989), a set of five monochrome prints, from 'The Farmer's Year', each circa 20 cm x 26 cm, framed and glazed. **£200-300**

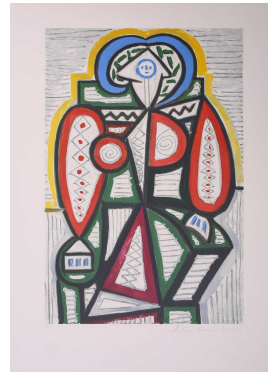


- 78 † Laurence Stephen Lowry RA (1887-1976) British, 'St Simon's Church, Salford', limited edition print, pencil signed, numbered 186/300, 37.5 cm x 27.5 cm framed and glazed. **£1,000-1,200**



The February Fine Art & Antiques Auction, 23rd Feb, 2023 09:30

- 79 † After Pablo Picasso (1881 - 1973) 'Femme Assise', Picasso Estate Collection limited edition colour lithograph, signed and numbered in pencil 'Collection Marina Picasso, 6/500', with blind stamps 'A Limited Edition After A Work By Pablo Picasso' & 'Circular Grid', printed verso in English & French 'Limited edition re-creation of an oil on canvas entitled "Femme Assise" by Pablo Picasso created on February 19, 1947, Approved by the Heirs of Pablo Picasso' and '© Aaron Keiter, Betty J Hughes & Dale R Ruckman, 1980', on Arches paper, with certificate of authenticity, Image approximately 58.5cm x 39.5cm, Overall 74.5cm x 53.5cm
A private estate. **£200-300**



- 80 A Tibetan Thangka, early 20th century, Sakyamuni Buddha, seated on a cloud cushion within a garden setting, deities to each corner, pigment on cloth with embroidered silk border, image 59cm x 41cm **£200-300**



- 81 A Chinese Hongmu table screen, late Qing, the simulated bamboo frame and stand carved with fruiting vines, the centre with a later printed picture after Xu Beihong, 79cm x 53cm **£300-500**



- 82 A Chinese domestic incense burner, late Qing, the cover with floral knob and decorated with shou symbols on a pierced wanzi ground, the bowl with cloud collar and stylised foliate decoration in silver and gilt colours, the applied handle with foliate decoration, approx 28cm; a Bhutan copper incense burner, early 20th century, the pierced cover decorated with auspicious buddhist symbols above a lotus form base, with applied mask & ring handles, 20cm; a Tibetan bronze water vessel, early 20th century, the ovoid body cast as a spotted toad, on oval foot, 30.5cm; and a pair of Tibetan white metal dkar-me (butter lamps), each embossed with three lotus roundels, on a circular foot, 8.5cm diameter **£200-300**



- 83 A Tibetan carved wood kils (Phur-ba), 19th century, carved with three wrathful Vajrakils faces, pater painted, 30.5cm; a bronze phurba, with two faced deity above a vajra and triple blade, 20th century, 23cm; a five prong vajra, 10cm and two Tibetan cast metal hand bells, each with vajra terminal, 14.5cm & 16.5cm
Most items acquired in Nepal circa 1960s/70s **£150-250**



Buyers Premium 25% + VAT. Fully illustrated catalogue at dawsonsauctions.co.uk.

The February Fine Art & Antiques Auction, 23rd Feb, 2023 09:30

- 84 A large Japanese embroidered picture of cranes in flight, 20th century, 98 cm x 57 cm framed and glazed. **£100-150**



- 85 A set of nine Tibetan tsakalis, initiation cards, hand painted with peaceful and wrathful deities, auspicious symbols and ritual implements, painted on card, 10cm x 8cm; a Tibetan damaru drum, of double hoof form, united at the centre with a copper band inset with semi precious stones with silk attachment, 6.3cm high; and a pair of Buddhist tingsha (Ting shags) hand cymbals, each decorated with four shou symbols, united by a leather strip, 6.5cm diameter **£150-250**



- 86 A Chinese Swatow blue and white bowl, Ming/Qing, painted with stylised chrysanthemums, the interior with a foliate sprig, seal mark to the underside, 18cm diameter. a heavily potted Chinese wash basin, with sweet pea decoration, 33.7cm diameter; and a pair of early 20th century square porcelain cricket cages, painted in enamels, impressed mark to underside, 6cm high; and a pair of blue and white hexagonal porcelain cricket cages, 9cm high **£100-150**



- 87 Four Chinese porcelain hat stands, late Qing - early 20th century, each of cylindrical form, painted with scenes of ladies in a garden beneath a blossoming tree bearing signature for Wang Daxing, a Manchurian crane and lingzhi beneath a pine tree, signed Yong, songbirds on a rock beside a blossoming flower with pierced and gilt quatreforms, and a mountainous landscape with figures fishing and in boats, all with lines of calligraphy, the former three with red stamped Tongzhi marks and the latter with a Jiangxi Zhou de shun printed oval mark, 27.7cm - 28.5cm **£300-500**



- 88 A Nepalese bronze figure of Bodhisattva Avalokiteshvara, early 20th century, the eight armed deity holding associated attributes, standing on a double lotus before an aureole, the base inscribed and dated Samvat 1042, corresponding to the Gregorian calendar as 1921, 24cm
Acquired in Kathmandu in 1960. **£150-250**



The February Fine Art & Antiques Auction, 23rd Feb, 2023 09:30

- 89 A Tibetan carved bone necromancer's apron, 19th century, carved with wrathful deities and auspicious symbols, united by beads, 47cm across **£100-150**



- 90 A pair of Chinese blue & white quintal bulb vases, late Qing, with garlic mouth and painted with panels of figures and auspicious flowers beneath ruyi head border, 24 cm high. (Qty: 2) **£200-300**



- 91 A Tibetan thangka, 18th century, Grub-chen Karma pakshi - the Second Black hat Karampa, with a further figure in the top left likely to be sGam-po-pa, framed and glazed 43cm x 29cm Received and framed by Dr J.A. Graham (1861 - 1942) in Kalimpong. Dr Graham was a Scottish missionary who founded St Andrew's Homes in Kalimpong in 1900. **£800-1,200**



- 92 A Tibetan Green Tara - sGrol-ma, possibly 18th century, surrounded by buddhas, divinities and Dalai Lamas, with vignettes of the life of Sakyamuni, pigment on cloth mounted on silk, 76cm x 52cm **£2,000-3,000**



- 93 A Japanese portable shrine, Zushi, Edo period, the interior with a carved and parcel gilt standing figure of Kannon with gilt halo, in long flowing robes standing on a raised base, the lacquer case with hinged doors, engraved brass mounts and part gilt interior, 27cm overall **£150-250**



The February Fine Art & Antiques Auction, 23rd Feb, 2023 09:30

- 94 A Tibetan Gyaling, 19th/20th century, the wood body with seven holes flanked by concentric metal bands inlaid with coloured stones, the bronzed metal mouthpiece with foliate decoration and colored stones, the flared end with foliate bands, the interior in red lacquer, 60.6cm; and a Chinese bamboo Xiao, engraved with a poem after Du Fu, 69.5cm **£150-250**



- 95 A bronze figure of Tara, possibly Bhutan, 20th century, seated in vitarka mudra, the underside sealed with wax, 17cm; a South Indian figure of Ardhanarisvara, 20th century, 18.5cm; a bronze figure of Bodhisattva Avalokiteshvara, seated in lalitasana, on a double lotus throne on square base, 12.5cm; a Javanese cast metal figure of Bodhisattva Padmapani, seated on a double lotus base, 12.5cm; and a set of three Buddhas, Vairocana, Aksobhya & Amitabha, 20th century, 7.8cm **£200-300**



- 96 Fang Xun (Chinese, 1736 - 1799) Iris, wallflower, michaelia and peony, signed, watercolour on silk, 115cm x 37cm Purchased by the vendors in May 1980 from Benjamin J Stein, Oriental Art, Amsterdam. **£1,000-1,500**



- 97 A Tibetan thangka, 18th century, Thub-Chen the Fifth Black Hat Karmapa and rTogs-Idan the Second Red Hat Karmapa, framed and glazed, 43cm x 29cm Received and framed by Dr. J. A Graham (1861 - 1942), in Kalimpong in the early 1900s. Dr Graham was a Scottish missionary who founded St Andrew's Homes in Kalimpong in 1900. **£800-1,200**



- 98 A Tibetan medical manuscript rKyang-sel, early - mid 20th century, comprising ninety hand drawn and coloured descriptive pages, eighty seven of which are double sided, depicting animals, insects and plants with inscriptions, 9.3cm x 48cm Believed to have been acquired in Kalimpong in the 1940's. **£100-150**

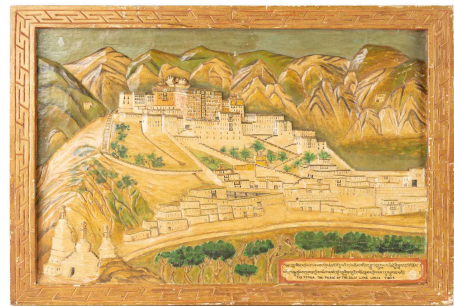


The February Fine Art & Antiques Auction, 23rd Feb, 2023 09:30

- 99 A Tibetan Thangka of Amitayus, early 20th century, seated within a gilt sunburst halo, with deities, attendants and auspicious animals, pigment on cloth mounted on silk, image 56cm x 41cm **£200-300**



- 100 A relief carved wood panel of the Potala Palace, Lhasa, Tibet, inscribed as being carved during the first lunar month (zla ba) of the fire monkey year (me byi) of the 16th cycle (rab byung bcu drug pa) of 60 years, this corresponds to the Gregorian year of 1936, 39.5cm x 59cm **£100-150**



- 101 A bronze stupa, possibly of Svayambhunath, Kathmandu, 17cm; and a gilt bronze Nepalese consecrated stupa, the underside with vajra, 16cm
The larger stupa was acquired in Nepal circa 1960. **£200-300**



- 102 In the manner of George Jacob; a Louis XVI style finely carved wood and gilt gesso fauteuil, late 19th century, with tied acanthus frames, pineapple finials and arched floral cresting above stuff over back and broad bow-fronted seat with carved guilloche rail, supported by spiral turned tapering legs. 71 cm wide x 67 cm deep x 107 cm overall height, 46 cm height to the seat top.
The inner seat frame is stencilled MDIII and bears a circular paper household label. **£500-800**



- 103 A good quality French Empire style marble topped walnut oval section pedestal vitrine , late 20th century, with fluted pilasters and gilt metal wreaths and capitals, on turned bun feet. 65 cm overall width x 151 cm overall height.
A private estate **£300-400**



The February Fine Art & Antiques Auction, 23rd Feb, 2023 09:30

- 104 A George III style two-seat sofa with swept arms and square back, with close nail detail raised on ebonised square tapering supports, with loose squab seat. 131 cm wide x 75 cm deep x 89 cm high.
Provenance: The contents of a Chelsea Mansion furnished by Nicky Haslam and Collette van den Thillart. £200-300



- 105 A French Directoire style marble topped mahogany vitrine, late 19th century, with three quarter gallery top above a single door with brass flutes, mouldings and cappings throughout, and supported by squat turned legs with corresponding brass cappings. 76 cm overall width x 41 cm overall depth x 145.5 cm overall height.
A private estate **£300-500**



- 106 A Victorian ebonized and red Boule marquetry inlaid single door pier cabinet with gilt metal caryatid mounts and mouldings throughout. Supported by a shaped plinth. 88 cm overall width x 36 cm overall depth x 110 cm overall height.
A private estate **£300-400**



- 107 A Napoleon III style king wood table jardiniere of serpentine outline, C1900, with gilt metal handles, pierced gallery and caryatid mounts and Sevres style floral porcelain panels, Fitted with a Japaned tin liner supported by squat bun feet. 47 cm wide x 25 cm deep x 18 cm overall height. **£200-300**



- 108 A French rustic oak farmhouse table, 19th century, with cleated scrubbed plank top, supported by substantial turned oak legs united by "H" cross stretcher above bun feet. 216 cm overall length x 76 cm overall width x 77 cm overall height, 62 cm knee height.
A private estate **£300-500**



The February Fine Art & Antiques Auction, 23rd Feb, 2023 09:30

- 109 A Louis XVI style gilt wood fauteuil, 20th century, with cameo back and ribbon carved outline, acanthus capped arms and stuff over upholstery, supported by turned and fluted legs. Together with a gilt wood Louis XV style stool, both 20th century. 62cm overall width x 64 cm overall depth x 94 cm overall height, 45 cm height to the seat (the chair).
(Qty: 2)
A private estate **£150-200**



- 110 A reproduction "HMV" "Monarch junior" wind up Gramophone with japanned tin horn and oak case, seated upon a Victorian pedestal stand with carved lion's masks and barley twist columns together with a selection of vintage 78rpm shellac records. 61 cm diameter of horn
A private estate **£300-500**



- 111 A George III style mahogany quartteto of intersliding tables, 20th century each table with a moulded beaded border and central oval burr yew panel, supported by turned spindle frames with receded sledge feet. 55 cm wide x 36 cm deep x 66 cm overall height (The largest of the four)
Private collection. **£150-250**



- 112 A pair of Louis XVI style carved and gilt pedestal jardinières, 20th century, with circular rouge marble nest tops, above carved and pierced frieze, on fluted supports joined by a concave stretcher and turned feet. 48 cm diameter x 73 cm high. **£200-300**



- 113 A Louis XVI style marble topped rosewood music cabinet, late 19th/20th century, with a pair of tulip wood banded doors with inset gilt grille and pleated silk panels, above a leathered brushing slide and a pair of tambour doors below enclosing a fitted folio section, with gilt bronze Neo Classical mounts throughout. Supported on shaped cabriole legs. 63 cm overall width x 39 cm overall depth x 125 cm overall height
A private Buckinghamshire estate **£300-500**



The February Fine Art & Antiques Auction, 23rd Feb, 2023 09:30

- 114 A Theodore Alexander "Rep-Li-Ca" craftsman-made oval mahogany Bachanailian cellarette on stand, 20th century, a faithful copy of a George III mahogany cellarette supported by its fluted stand with cabriole legs carved with the young head of Bacchus mask knees terminating in carved pied de biche feet, fitted with a removable brass liner. Bears a trade plaque to the underside. 61 cm long x 46 cm wide x 70 cm overall height.
A private estate **£400-600**



- 115 A George III mahogany chest on chest, the upper section with two short over three long drawers and the lower carcass with three further long drawers, supported by shaped bracket feet. 120 cm wide x 59 cm deep x 172 cm overall height. **£200-300**



- 116 In the manner of Antoine Gaillard; a finely carved wood and gilt gesso fauteuil, 19th century, with ribbon cresting the back flanked by a pair of fluted turned columns with flambé finials above acanthus capped arms and bow fronted stuff over seat, supported by conforming turned and fluted legs with ionic capitals. The inner seat frame stencilled MD741(?) 65 cm wide x 63 cm deep x 105 cm overall height, 45 cm to the seat top.
A private estate. **£400-600**



- 117 A Regency mahogany sideboard, the rectangular top with rounded corners and ebony strung edge over a long drawer flanked by a bottle drawer and cupboard door, with rope twist dividers, above acanthus carved brackets and reeded turned tapering legs, serving door to left side, 189 cm wide, 60 cm deep, 91 cm high **£200-300**



- 118 A George III plum mahogany chest on chest, the cavetto cornice over two short and three long graduated drawers, over a base section with brush slide and three long graduated drawers, on slightly outsplayed bracket feet, 121 cm wide, 185.5 cm high, 59 cm deep **£300-500**



The February Fine Art & Antiques Auction, 23rd Feb, 2023 09:30

- 119 A Victorian figured walnut credenza with a tulipwood banded figured top above a central glazed door flanked by a pair of glazed bow ends, fitted with watergilt bronze mounts throughout on a shaped plinth base. 104 cm overall width x 38 cm overall depth x 112 cm overall height.
A private Buckinghamshire estate **£300-400**



- 120 A Louis XV style mahogany and cube parquetry fold over serpentine gaming table, 20th century, the shaped frieze with applied Severes style porcelain roundells, fitted with cast and gilt metal mount as throughout, supported by slender cabriole legs. 74 cm overall length x 34 cm deep x 77 cm overall height.
£200-300



- 121 A Louis XVI style marble topped king bureau de cylinder, 20th/21st century, with tulipwood crossbanding and Neo-Classical marquetry, the fall opening to reveal a simple fitted interior of drawers and a sliding writing surface with single frieze drawer below, supported by turned and fluted legs with gilt metal capping. 89 cm wide x 53 cm deep x 125 cm overall height, 82 cm to the underside of the sliding surface. Fitted with two working decorative keys. **£400-500**



- 122 A pair Louis XV style carved wood and gilt gesso salon chairs, 19th century, with shaped cresting rails over cartouch backs, and stuff over seats, supported by carved cabriole legs fore and aft. 48 cm wide x 49 cm deep x 94 cm overall height, 49 cm height to the seat. **£200-300**



- 123 An Edwardian mahogany and Neo-Classical marquetry inlaid freestanding corner display cabinet, in the manner of Edwards & Roberts, fitted a shaped swan neck pediment above a single Astragal glazed upped section with inlaid cupboard door below, on shaped bracket feet. 70 cm overall width x 42 cm deep X 209 cm overall height.
A private estate **£150-250**



The February Fine Art & Antiques Auction, 23rd Feb, 2023 09:30

- 124 A French Louis XVI style mahogany single door marble topped vitrine, late 19th century, of concave canted section, decorated with well cast ormolu mounts throughout and the lower door with trellis parquetry panels and applied oval plaque depicting Psyche rebuking Cupid, Supported by gilt metal capped turned feet. 90 cm wide x 34 cm deep x 146 cm overall height. A private collection **£300-500**



- 125 A good quality Art Deco 'Odeonesque design ivory hide upholstered *Cloud Back* three-piece lounge suite, late 20th century, the set comprises two tub armchairs and a conforming two seat sofa, each with rosewood cross grain outlines and geometric bracket feet. 143 cm wide x 81 cm deep x 79 cm overall height the sofa
A private estate **£600-800**



- 126 A French Charles X style mahogany gueridon, late 19th century, the circular top with a decorative marquetry fan burst and anthemion inlay within a cast and gilt metal border, supported by a simple turned column over a tripartite base with ormolu sphinx mounts, on turned bun feet. 78 cm diameter x 72 cm overall height
A private Buckinghamshire estate **£400-600**



- 127 A Louis XV-style satinwood and Kingwood crossbanded bureau plat, late 19th century, with tooled Morocco leather inset top, fitted with gilt bronze mouldings, mounts and embellishments throughout, above a pair of mahogany lined shaped frieze drawers, the whole supported by slender cabriole legs with gilt swivel castors. 109 cm wide x 62 cm deep x 76 cm overall height, 60 cm knee height. **£800-1,200**



- 128 An Indian rustic carved teakwood over mantle mirror with overhanging arcaded cornice above a pair of arched mirror panels flanked by figural brackets with three candle brackets below. 96 cm wide x 72 cm overall height x 19 cm deep.
A private estate **£150-200**



The February Fine Art & Antiques Auction, 23rd Feb, 2023 09:30

- 129 A flight of craftsman made three tread mahogany library steps, late 20th century, with a bookrest top and side bannister 56 cm wide x 80 cm long x 156 cm overall height, height to the top step 70 cm
Note: It is important as with any wooden steps or ladders that the user is responsible for the safe usage of the items with regard to weight limits **£300-500**



- 130 A George III style mahogany revolving supper table, 20th century (but a faithful copy), the circular multi dished top interspersed with leaf and shell carvings, on a hinged birdcage above a turned and fluted and urn stem over bold cabriole legs with anthemion knees and claw and ball feet. 78 cm diameter x 76 cm overall height.
 A private collection **£1,000-1,500**



- 131 A Louis XVI style kidney shaped Kingwood bureau plat by Berry European Furniture, with inlaid and pen worked top within a gilt metal capping above a shaped frieze drawer on square tapering legs with brass swivel castors. 97.5 overall width x 57 cm depth x 78 cm overall height, 62 cm knee room. **£300-400**



- 132 A French Empire-style circular rosewood gueridon table with a floral painted top, 20th century, with a cast and gilt support terminals, 80 cm high x 54 cm diameter. **£300-400**

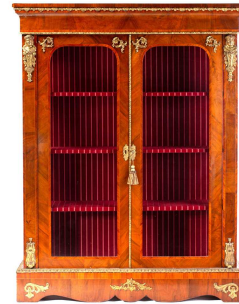


- 133 A French Napoleon III marble topped rosewood dressing commode with marquetry decoration, fitted four long drawers with ormolu mounts throughout, supported by leafy scroll feet joined by a shaped apron. 112 cm overall width x 56 cm overall depth x 84 cm overall height.
 A private estate **£300-400**



The February Fine Art & Antiques Auction, 23rd Feb, 2023 09:30

- 134 A Victorian French style two door figured walnut vitrine, with satin wood stringing and tulipwood bandings throughout, fitted with gilt metal "Romanesque" brackets and open floral scroll appliqués and mouldings. Supported by a shaped plinth. 118 cm overall width x 34 cm overall depth x 153 cm overall height. A private estate **£300-400**



- 135 Two Edwardian mahogany corner salon armchairs one with lure splat and one with oval seat, both with stuff over upholstered seats, on turned and shaped legs, respectively. 59 cm overall width x 45 cm deep x 84 cm overall height, the larger of the two chairs. Private estate **£100-150**



- 136 An Edwardian Maple & Co of Tottenham Court Rd, Neo-Classical marquetry inlaid mahogany drinks table, with mechanical rise and fall centre, the removable two handled glass bottomed drinks tray with a set of twelve cut glass tumblers, the whole on square tapering supports with brass swivel castors., bearing an engraved brass trade plaque to the interior. 57 cm x 59 cm x 77 cm overall height. A private estate **£100-200**



- 137 An French Louis XVI style marble topped three drawer rosewood commode, early 20th century with geometric parquetry decoration, canted corners and gilt metal mounts throughout, supported by angular cabriole legs. 85 cm overall width x 42 cm overall depth x 90 cm overall height. A private estate **£200-300**



- 138 A matched pair of Louis XV style marble topped king wood and tulipwood two drawer petit commodes, 20th century, with marquetry decoration and, decorative gilt metal handles and mounts throughout, supported by slender cabriole legs. 45 cm x 32 cm overall width x 76 cm overall height. A private estate. **£300-500**



The February Fine Art & Antiques Auction, 23rd Feb, 2023 09:30

- 139 A French Napoleon III style mahogany oval table en chiffonier with marble top, 20th century, with pierced gilt gallery, above a shaped single frieze drawer above a tooled leather under tier with conforming gilt gallery, supported by slender cabriole legs. 44 cm long x 32 cm wide x 72 cm overall height. A private estate **£200-300**



- 140 A Louis XVI style mahogany and trellis parquetry break front side table, 20th century with a single frieze drawer embellished throughout with cast and gilt metal mounts, supported by turned and fluted tapering legs with gilt metal capping and infill. Fitted with a decorative working key. 58 cm wide x 42 cm deep x 71 cm overall height. **£300-400**



- 141 A George II style walnut gateleg dining table, by David Prue for Brights of Nettlebed, the oval hinged top on turned tapering legs and club feet, David Prue label under the frieze, 165.5 cm wide, 172.5 cm open, 72 cm high, **£200-400**



- 142 An Italianate wrought iron three panel room screen, 20th century, with verdigris painted scrolling tendrils terminating in embossed and painted leaves. 154 cm wide x 180 cm overall height. **£300-500**



- 143 An Edwardian-style beech framed Gentleman's club-type tub chair, late 20th century, with close nailed "toffee" coloured distressed hide upholstery, on squat tapering supports with brass swivel castors. 82 cm overall width x 76 cm deep x 80 cm overall height, 42 cm height of the seat. **£300-500**



The February Fine Art & Antiques Auction, 23rd Feb, 2023 09:30

- 144 A pair of Conran Shop "Bolivar" tan hide upholstered traditional roll-over armchairs together with a matching stool, all supported on squat tapering wooden feet. 85 cm overall width x 96 approximate overall depth x 89 cm overall height, 42 cm height to the seat top, the chairs.
A private estate **£400-600**



- 145 A mid century vintage Mahbro (Rainham) 1940s/50s circular Bakerlite and tubular aluminium coffee table. 60 cm diameter x 53 cm overall height.
A private estate **£100-150**



- 146 An early Victorian figured rosewood rectangular fold-over tea table with cross grain frieze and carved segmented baluster column and an unusual triangular base with boldly carved scroll feet. 107 cm overall width x 48 cm deep x 78 cm overall height.
A private estate **£150-250**



- 147 A late Gustavian "Swedish Empire" carved wood and gilt gesso console table, early 19th century, with an inset rectangular white marble top supported by a central winged caduceus and entwined cornucopia above a simple ebonized conforming base. 81 cm wide x 39 cm deep x 85 cm high.
£400-600



- 148 A 19th century style rectangular gilt framed wall mirror, 20th/21st century, with deep bevelled mirror plate and relief decoration. 90 cm x 182 cm **£200-300**



The February Fine Art & Antiques Auction, 23rd Feb, 2023 09:30

- 149 A Victorian golden oak "tree" hall stand with four shaped branches and turned hat and coat pegs and a central mirror above a glove box with a hinged cover flanked by twisted metal stick and umbrella stands to either side, on a serpentine plinth sub-base with turned feet. 87 cm overall width x 28 cm overall depth x 202 cm overall height.
Private estate **£150-250**



- 150 An extremely large and impressive 19th century style cylindrical mahogany parrot cage, late 20th century, with stupa finial over a domed top and brass grilles, decorated with parcel gilt guilloche and acanthus, supported by four turned and carved legs. The base with a sliding panel to aid the cleaning of the cage. 81 cm diameter x 260cm high (approximately)
A private collection. **£800-1,200**



- 151 An Edwardian pine? dressing table by Howard & Sons, the swing mirror on shelved supports above a kneehole with five drawers, on turned tapering legs with brass castors, the left top drawer with Howard & Sons label, and impressed 10957 5 72 to the top of the drawer front, 138.5 cm high, 122 cm wide, 56 cm deep **£100-150**



- 152 A Napoleon III style ebonised and faux shell Boule pedestal chest of six drawers with cast and gilt mounts throughout and elaborate brass inlay, supported by shaped cabriole legs. 49 cm wide x 36 cm deep x 111 overall height **£300-400**



- 153 An unusual Victorian Circassian walnut corner display cabinet (adapted) with single glazed serpentine door Iliad with tinted floral marquetry with gilt bronze mounts throughout over a shaped plinth base. 77 cm wide x 46 cm deep x 119 cm overall height. **£300-400**



The February Fine Art & Antiques Auction, 23rd Feb, 2023 09:30

- 154 A late 19th-century French giltwood framed mirror, with shell and floral garland surmount, 154 cm x 109 cm **£500-800**



- 155 A pair of golden ground Turkish silk on silk mats, early 20th century, with central lozenge and hanging medallion decoration within a shrub and carnation borders. 75 cm x 54 cm (Qty: 2) **£300-500**



- 156 A black ground Tibetan pictorial rug, late decorated with a battling dragon and phoenix an early 20th-century black ground rug, 2 mtrs x 1 mtrs together with a Ninghsia meditation mat. **£200-300**



- 157 A rust red ground Yarkand pictorial carpet, Kashgar, late 19th century, with desert flowers and decorative vases and within a vine and flower head border. 3 mtrs x 1.74 mtrs
A private collection **£500-700**



- 158 An Art Deco ebonite and chrome plated table lamp, early 20th century, with geometric moulded glass diffuser above a crusiform column and a stepped circular base. 56 cm overall height. **£150-200**



The February Fine Art & Antiques Auction, 23rd Feb, 2023 09:30

- 159 Llewelyn Davies (b.1950) Zimbabwean, a limited edition brown patinated bronze figure group of three swimming dolphins, on a polished circular black marble base, signed 'Llewelyn' and numbered 14/50, 20 cm diameter at the base x 41 cm overall height.
A private collection. Certificate of authenticity included. **£300-500**



- 160 A late grand tour patinated bronze reduction of the Temple of Castor & Pollux, 9.5 cm wide x 20.5 cm overall height. together with a smaller example on a marble base, 13 cm overall height, a miniature patinated reduction of the Temple of Vespasian and Titus on a giallo antico base, 15 cm high, a miniature bronze reduction of the Temple of Saturn on a giallo antico base, 9 cm high and a miniature bronze inkwell in the form of the Fire Temple of Vesta (cover and insert missing) 6 cm high (5) **£400-600**



- 161 A pair of 19th-century hollow cast bronze busts, 'Cicero' and 'Demosthenes', after the antique, on cylindrical marble and ormolu mounted bases, each 27 cm high. (Qty: 2) **£1,000-1,500**



- 162 After Augustus Rodin, 'The Kiss', a large paginated bronze figure on a square white marble base. 45 cm wide x 50 cm deep x 85 cm overall height. **£200-300**



- 163 A late grand tour patinated bronze reduction of the Furietti Centaur, 19th century, with arm aloft and draped in his aegis (base missing) 22 cm long x 26 cm overall height, together with a pair of late grand tour patinated bronze reduction of recumbent Sphinx, (marble plinths vacant) 26 cm long, and a patinated spelter figure of maritime endeavour. (4) **£300-400**



The February Fine Art & Antiques Auction, 23rd Feb, 2023 09:30

- 164 A collection of small grand tour items including a late grand tour cast bronze model of an ancient Roman oil lamp, 19th century, with twin mask head spouts and leafy mantle over a pedestal foot. 19 cm wide (cover missing) together with an A&AB patent twin asp handled oil lamp, a specimen marble obelisk, a classical ormolu urn with swag and goats mask decoration, a small gilt bronze tripod form inkwell body and cove, gilt bronze furniture capital mounts and a niello worked hinged box and a rustic Doric column fragment. **£200-300**



- 165 † Emma Rodgers (b.1974) British, 'Dancer', a sculpture in porcelain, on a triangular base, 51 cm high. Private collection, with original purchase receipt from the Campden Gallery, Chipping Campden **£1,000-1,500**



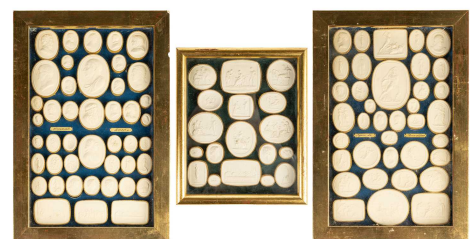
- 166 An Oriental-carved white marble bust study of an Asian lady peering from the interior of the stone. 48 cm wide x 94 cm high. **£120-150**



- 167 A Victorian marquetry inlaid rosewood liqueur box, the hinged cover inlaid with the legend "Liqueurs" opening to reveal four decanters and stoppers and nine conical glasses, the case fitted a pair of decorative swing handles. 24 cm wide x 25 cm deep x 25 cm high, with working key. A private estate **£200-300**



- 168 A collection of mid-19th century Italian Grand Tour plaster intaglio medallions, after Antonio Canova and Bertel Thorvaldsen, presented in a later gilt frame, together with a similar set from the Museo Capitolino and a smaller group, also framed.
(Qty: 3) **£1,000-1,500**



The February Fine Art & Antiques Auction, 23rd Feb, 2023 09:30

- 169 A pair of 19th-century "Ecclesiastic- Gothic" gilt brass table lamps with pierced cup drip pans above vine-wrapped "Solomonic" columns and a pieced tripartite base with stylized lion's paw feet. 26 cm wide at the base x 66 cm high to the drip pans.
(Now with lamp holders removed fitted with a pair of tall pillar candles)
Private estate **£150-250**



- 170 A carved onyx owl with diamond set eyes, attributed to Alfred Pocock, set on a naturalistic stone base, 12.5 cm high. **£250-350**



- 171 A large Flanders Tapestries Louis XIV style "Lille" tapestry, early 21st century, depicting The hunting party of Louis XIV, mounted on a decorative metal cornice pole. 143 cm x 225 cm.
A private estate **£1,000-1,500**



- 172 A pair of Victorian cast and gilt brass heraldic sejant erect lion firedogs, each holding a decorative cross bars and mounted on a rope twist decorated domed octagonal base, 27 cm wide x 38 cm overall height. Together a set of three urn handled brass fireside tools and matching fire dogs with shell decoration.
A private estate **£200-300**



- 173 A Louis XVI-style heavy ormolu spark guard, late 20th century, with a shaped arch top above a pieced panel of Neo-Classical decoration with fine-blued steel mesh background, supported by shaped architectural feet. 63 cm overall width x 82 cm overall height. **£300-500**



The February Fine Art & Antiques Auction, 23rd Feb, 2023 09:30

- 174 A pair of variegated black marble obelisks, on ball feet and plinth bases, late 20th century, 52.5 cm high **£200-300**



- 175 A fine pair of Louis XVI style ormolu and variegated green marble casseroles of classical urn form, late 19th century, the domed covers with thyrsus finials, reversing to reveal a pair of candle nozzles, supported by cast and punch matted ram's mask boss above festoons of cut blooms on slender pied-de-biche feet on a circular sub base with floral boss. 26 cm overall height.



A private estate **£300-500**

- 176 A French Napoleon III style gilt brass "Peacock" folding fire screen, 20th century, with a heavy cast Neo-Classical decorated body with stirrup handle, each leaf with pierced decoration, on a pierced anthemion decorated base. 114 cm wide x 78 cm overall height.

A private estate **£200-300**



- 177 A large antique Sawfish (*Pristis pristis*) rostrum 125 cm long x 39 cm wide. CITES Certificate number 628376/01. Private collection **£200-300**



- 178 An original Disney animation production cel, featuring 'Mickey as Sorcerer' and Donald Duck, from the 60th Academy Awards (1988) collection, 22.5 cm x 31 cm framed and glazed. Certificate of Authenticity attached verso, with Catto Gallery label also present. **£200-300**



The February Fine Art & Antiques Auction, 23rd Feb, 2023 09:30

- 179 A presentation boxed Hermes of Paris set of four porcelain individual ashtrays in colours with stylised "H" trellis design. 19 cm x 15 cm x 3 cm thick (the box).
A private estate **£100-150**



- 180 A collection of loose Leica photography accessories to include a Leitz Leica Visoflex, a Leitz Leica 90mm 1:4 Elmar chrome lens, chrome, Serial number 1464484, a Leica MC light meter, a cased set of three Ernst Leitz GmbH lens filters and assorted other lens accessories. **£300-500**



- 181 David Linley; an English walnut folding tray topped low tea table with central quartered burr panel within an everted rim, the cross frame folding base with leather retaining straps and spindle turned stretchers., the frame stamped; David Linley. 53 cm long x 38 cm deep x 56 cm overall height.
A private estate **£200-300**



- 182 A Linhof Technika V 5 x 4" plate camera, serial number 63532, with Schneider-Kreuznach Angulon 1:6,8/90 lens and Schneider-Kreuznach Symmar 1:5,6/150 lens, Schneider-Kreuznach 'Universalsucher' viewfinder, 42-54mm lens visor, three filter holders, roll film back, fourteen plate holders and other small accessories, all in a fitted Linhof case with matching serial number, cased with accessories. **£400-600**



- 183 A hand-painted Xerographic character cel from the 1937 Disney cartoon 'Don Donald', from a limited edition of 500, artist signed, 28.5 cm x 39 cm framed and glazed. The cels were reproduced by Disney, with their artists applying acrylic based paints to Xerox copies of the original cels. Catto Gallery label verso, with a Disney-produced label describing the history. **£300-500**



The February Fine Art & Antiques Auction, 23rd Feb, 2023 09:30

- 184 A mid-century Thermos vintage urn form chromium plated ice bucket and cover with Ivorine fittings, 20 cm wide x 16 cm overall height, together with a matching ice bucket and cover with contrasting fittings, one other chromium plated ice bucket and cover with a swing handle and a silver plated Champagne bucket with lion's mask ring handles. (4) **£150-250**



- 185 David Linley; a walnut strung sycamore pedestal fruit cradle in the form of a classical capital with scroll ends, on a turned sycamore spreading base, stamped David Linley 1990. 44 cm long x 20 cm wide x 19 cm high. **£150-250**



- 186 David Linley: two boxed sets of eight English walnut and silver plated rectangular name place stands with loaded bases. 9 cm wide x 2 cm deep x 2.5 cm high. A private collection **£100-150**



- 187 A Hawkins Classic art deco style teasmade, together with a collection of assorted art deco chrome and later items, to include a caviar dish, a photograph frame, two sets of coffee cups and saucers and other items. **£200-300**



- 188 A complete run of the first set of Eagle comics, (997 issues in 20 volumes), 1950-1969, to include issue one, collected and bagged by volume in six boxes. Private collection, retained by the vendor **£1,000-1,500**



The February Fine Art & Antiques Auction, 23rd Feb, 2023 09:30

- 189 A collection of Edwardian and later cameras, to include a Linhof of Germany standard 5 x 4 press camera, a Thornton-Pickard "Victory" medium format camera, a J. Lizars "Challenge" mahogany bodied bellows camera and other cameras and film carriers and photographic accessories. A private collection **£200-300**



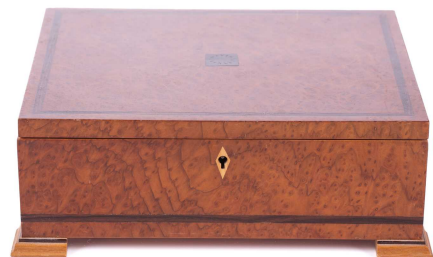
- 190 An E J Riley pictorial billiard/snooker oak scoreboard, the hinged fall front fitted with three Fox hunting colour prints, opening to reveal the gilt lettered scale with turned ebony sliding markers, 76.5 cm x 36.5 cm
This is noted as being one of the more desirable and rarer of the pictorial scoreboards produced by E J Riley. **£100-150**



- 191 A 1958 Leica DBP Ernst Leitz GMBH Wetzlar IIIg camera, (No 933881), with Ernst Leitz GMBH Wetzlar Summicron F=3.5cm 1:3.5 lens (No 1638959), with lens cap, in original Leica branded leather case. **£700-1,000**



- 192 David Linley a rectangular amboyna and zebrano strung cigar box, the hinged cover bearing an inset ebony entablature bearing the legend "David Linley", the box supported by moulded chestnut bracket feet. 23 cm wide x 19 cm x 8 cm overall height.
A private estate **£100-150**



- 193 A Thomason type barrel corkscrew, the barrel with ring turned decoration and with applied gilt embossed label for 'J F Lee Patent', with turned bone handle with brush, 26cm fully open, 18.5cm closed **£150-250**



The February Fine Art & Antiques Auction, 23rd Feb, 2023 09:30

- 194 Charles III: a hand-signed letter, written to Robert Marrington thanking him for his condolence letter, written after the death of Major Hugh Lindsay, killed by an avalanche at Klosters in 1998. Charles and Diana had been on a skiing holiday, with Major Lindsay, with Charles himself also being on the slopes at the time. The letter, on Kensington Palace headed notepaper and dated 28th March 1988, has a written 'Dear Mr Marrington' over typed font, to include the line '*I still find it hard to understand why I survived and he didn't, but that, I suppose, it's part of the unfathomable mystery of our existence...*', and signed in fountain pen 'Yours Sincerely, Charles'. In a presentation framed mount flanked by two colour photographs, one of Charles skiing and another of him in Highland dress. Private collection. **£1,000-1,500**



- 195 A late grand tour patinated bronze encrrier, 19th century, of two-handled form with single central covered well and four quill stands, 17 cm long x 13 cm wide x 7 cm high. Together with a gilt bronze two-section grand tour covered encrrier of gothic architectural form moulded with crocketed lancet arches, on gilt leafy cluster feet, a grand tour reduction of the winged Lion of St. Mark, and the Farnese Hercules on a rouge turned marble base. (4) **£200-300**



- 196 A 1960 Leica M2 Rangefinder camera, chrome, serial no. 989419, with Leitz Elmar Summicron lens, f=5cm 1:2, serial no. 1480145, with original lens cap and fitted leather Leica case. **£700-1,000**



- 197 A twelve-bottle case of Chateau La Couspaude, 2000, St Emilion Grand Cru Classé, ullage bottom of neck **£200-300**



The February Fine Art & Antiques Auction, 23rd Feb, 2023 09:30

- 198 A twelve bottle case of Chateau Margaux 1989 Premier Grand Cru Classé, ullage bottom of neck **£5,000-8,000**



- 199 A twelve-bottle case of Chateau Palmer, Margaux, 1986, ullage upper mid shoulder **£1,800-2,500**



- 200 A twelve bottle case of Grand Vin de Chateau Latour, 1988, tissue wrapped bottles, ullage bottom of neck **£3,000-4,000**



- 201 A vintage Smiths 'mystery' style Art Deco rotating glass and chromium plated electric mantle clock, together with a bakelite Art Deco bedside alarm clock with integral bedside lamps and an Art Deco mirror-cased mantle clock. 16 cm overall width x 18 cm overall height the primary item.



clock with
(Qty: 3)

A private estate **£150-250**

- 202 A Louis XVI style ormolu and white marble portico clock garniture by Japy Bros, early 20th century, the eight-day movement chiming the hours and the half with a passing strike on a single bell, the case with a two-handled urn surmount supported by four turned pillars and fitted a "Sun King" pendulum bob, over a sub base with toupe feet, accompanied by a pair of similarly mounted two handled urns en-suite. 21.5 wide x 38 cm overall height. the clock. **£150-200**



Buyers Premium 25% + VAT. Fully illustrated catalogue at dawsonsauctions.co.uk.

The February Fine Art & Antiques Auction, 23rd Feb, 2023 09:30

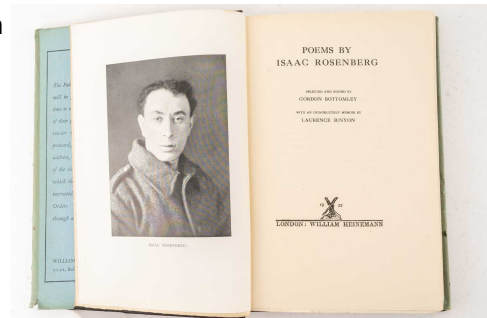
- 203 An Art Deco Smith of Enfield Austrian green onyx mantle clock, early 20th century, the solid octagonal dial with applied chromium Arabic numerals and skeletal hands, supported by a lozenge base, 19 cm overall width x 22 cm overall height. Together with one other Art Deco onyx mantle clock of similar shape but with diamond shaped dial. **£80-120**



- 204 A WWI and WWII medal group, comprising a 1914-15 Star, a WW1 Campaign and a Victory medal, each named to 1654 PTE. F J Jenkins, Sussex Regiment, together with a WWII Defence Medal, a 1939-1945 Campaign Medal and a George V Territorial Efficiency medal, named to 740538 GNR. F J Jenkins, RFA. Also included is a black and white photograph of Private Jenkins. **£300-500**



- 205 Rosenberg (Isaac); 'Poems', 1922 first edition, London, Willaim Heinemann, portrait frontispiece, original cloth, paper label to spine, dust-jacket. **£100-150**



- 206 Lissitzky, El and Art, Hans (publisher); Die Kunstismen/Les Ismes De L'Art/ The Isms of Art 1914-1924, Eugen Rentsch Verlag 1925, Eleven pages of description in three languages and 48 pages of black and white plates (general wear with age, crease to the corner of the hardboard covers and some tears to the spine, generally discoloured) and a collection of loose reproduction prints of works by Renato Birilli, 21 x 15 cm **£300-500**



- 207 A collection of eleven fine silver proof crown size coins, comprising two coin set Britannia 'The Spirit of a Nation' 2019, with proof and frosted finish, 2012, 2015, 2017 & 2021 ultra cameo £2 denomination, three fine silver dollars 2012 & 2021, a silver Krugerrand 2022 and a Fiji \$2 Hawksbill Turtle, all slabbed by and graded by NGC, the 2021 Dollar slabbed and graded by ANACS **£250-350**



The February Fine Art & Antiques Auction, 23rd Feb, 2023 09:30

- 208 A George V silver proof half crown, 1911, and a Victorian Jubilee head crown, 1889. **£100-150**



- 209 A collection of 72 official silver proof commemorative coins of the Olympic Games, with certificates and contained in three cases, by Crown Collections Limited. **£600-800**



- 210 An 18th century Masonic firing glass, the bowl engraved with Masonic emblems and G within a star, on a plain stem and thick circular foot, 11 cm high
Sotheby's: lot 122 - 6th March 1978 and lot 91 - 24th July 1951
£100-150



- 211 An 18th-century wine glass, the conical bowl over a twin thread opaque air twist stem and conical circular foot, 16.3 cm high, together with another with corkscrew air twist stem and circular foot, 15.1 cm high and a third with fluted bowl and multiple opaque air twist stem and circular foot, 15 cm high
(Qty: 3) **£100-150**



- 212 An 18th century ale glass, the long bowl with crossed barley corns, on a plain stem and folded foot, 20.5 cm high; together with a conical ale glass with twin thread air twist stem and circular foot, 20.2 cm high; an ogee bowl ale glass with ribbon and corkscrew air twist stem and circular foot, 18.5 cm and another similar with opaque air twist stem, 19 cm high; catalogues including The Krug Collection of Glass parts I-III
(Qty: 4) **£200-300**



The February Fine Art & Antiques Auction, 23rd Feb, 2023 09:30

- 213 A late 18th century ale glass, the long rounded bowl with gilt edge, barley and floral sprays, on a faceted stem and circular foot, 19.2 cm high
Sotheby's: Lot 195 Anthony Waugh Collection 28th April 1980
£200-300



- 214 A mid-18th century air-twist ale glass, with long bowl over a twin thread stem and circular foot, 17.7 cm high, together with an opaque twist conical ale glass, with four thread stem and circular foot (small chip to the foot), 18.3 cm high
(Qty: 2)
Christie's: Lot 53 (from Berney Collection) and Lot 130 Standish Collection Sale, 5 November 1998 **£200-300**



- 215 An 18th century ale glass, the ogee bowl on a multiple opaque air twist stem and conical circular foot, 19 cm high; together with a drawn conical ale glass with opaque air twist stem and conical circle foot, 19 cm high, a wine glass with ogee bowl and multiple air twist stem on conical circular foot, 15 cm high; a drawn conical ale glass with air bubble stem and folded foot, 20.7 cm high, and another drawn conical glass with air bubble stem and conical circular foot, 16.5 cm high, all 18th/early 19th century
(Qty: 5)
All purchased from the trade in the 1970s **£200-300**



- 216 An 18th-century ale glass, the shaped bowl engraved with hops, barley and foliage on a multiple air twist knopped stem and circular foot, 19 cm high, together with a further similar ale glass with ogee form bowl engraved with flowers and foliage, 17.9 cm high, and a plain bowl ale glass with red and opaque air twist stem and circular foot (chips to the foot), 18.9 cm
(Qty: 3) **£300-500**



- 217 A late 18th century wine glass, the trumpet form bowl with hops and barley, on a plain stem and folded foot, 19cm high, another ale glass, the ogee bowl with hops and barley on a multiple opaque air twist stem and circular foot, 18.2 cm high, another similar, 18.2 cm; a double knopped ale glass with air twist stem and circular foot and an ale glass with trumpet shape bowl and plain knopped stem (broken foot)
(Qty: 5)
Sotheby's: Lots 65 and 87, 17th July 1978; Lot 58 2nd October 1978 and Lots 47 and 51, 26th May 1981 **£300-500**



The February Fine Art & Antiques Auction, 23rd Feb, 2023 09:30

- 218 An 18th century ale glass, the long bowl with crossed barley corn and hops design, on a double knopped stem and folded foot, 18 cm high; an ale glass with funnel shaped square based bowl on a multiple air twist stem and conical circular foot, 18.9 cm high; and ale glass with plain long bowl, multiple opaque air twist stem and circular foot, 18.7 cm high; and an ale glass with funnel shape bowl on a double knopped air twist stem on a circular foot, 19.7 cm high, all 18th century (Qty: 4) **£300-500**



- 219 A suite of St. Louis Crystal Trianon Gold design drinking glasses, including, six large tumblers, 8.5 cm high, six liqueur glasses, 8.5 cm high, six champagne flutes, 18 cm high, six sherry glasses, 10 cm high, six white wine glasses, 12 cm high and a claret jug with stopper, 31.5 cm high (Qty: 31) **£1,000-1,500**



- 220 A large Poole Pottery earthenware vase, painted in the 'SK' Persian Deer design by Donna Ridout, 32 cm tall, together with a large Poole charger, designed by Veronica Harrison, in the 'LE' pattern, 39 cm diameter. (Qty: 2) **£200-300**



- 221 A 19th century Wedgwood black basalt urn of Campagna form, relief decorated with neo-classical figures, on a circular foot, 14.8 cm high. **£600-800**



- 222 A pair of Russian Gardner porcelain figures of a Peasant Woman churning butter, 13.5 cm high and a Peasant drinking from a Kovsh beside a barrel, 14.5 cm high, late 19th century, red stamped factory marks and impressed marks (Qty: 2) **£1,000-1,500**



The February Fine Art & Antiques Auction, 23rd Feb, 2023 09:30

- 223 A Wedgwood rosso antico large cup and saucer, 19th century, decorated in the Egyptian taste, the cup 7 cm high x 13.5 cm wide, together with two further dishes of the same design, and a Wedgwood covered bowl on integral base, 9 cm high, all 19th century, with impressed marks. **£250-350**



- 224 A large and impressive Ltd edition 587/2000 Lladro porcelain figure group "Tea in the garden" modelled by the masters Jose Puche and Angelita Cabo, accompanied by its signed and dated 2001 certificate of authenticity. 47 cm wide x 29 cm deep x 57 cm overall height.
A private estate. **£2,000-3,000**



- 225 Five items of 19th century Wedgwood rosso antico ware, comprising a miniature version of the Portland vase, 9.5 cm high, a taper holder, of circular form supported by three dolphins on a triangular base, 11 cm high, a Campagna urn on pedestal base (a/f), a covered box and a small planter, each with impressed mark to base.
(Qty: 5) **£400-600**



- 226 † Nick Mackman (contemporary) British, two fortified porcelain sculptures of recumbent African wild dogs (Lycaon Pictus) with bubble-infused localised glaze. 60 cm long x 27 cm high.
A private collection, with original purchase receipt from Beaux Arts, Bath, dated March 2019.
Nick Mackman was a former Zoo keeper of elephants and developed a love of African wildlife from her time **£600-800**



- 227 Wedgwood & Bentley, Etruria: a late 18th century black basalt urn and cover, of plain form on a square pedestal base, impressed circular mark to base, with 'Stoke-on-Trent Museums Ceramics Department' paper label, 22 cm high. **£700-900**



The February Fine Art & Antiques Auction, 23rd Feb, 2023 09:30

- 228 A large and impressive Lladro figure group, 'Cinderella's Arrival' No 263 (edition of 1,500?) modelled by the masters, F. Peloponnesus and J.Ruiz, mounted on its own wooden base. 114 cm long x 65 cm overall height. **£8,000-12,000**



- 229 A Lladro porcelain "Angelic Time" (5973) figurative mantle clock. 25 cm wide x 28 cm overall height. A private estate **£300-500**



- 230 A Royal Worcester fruit-painted lozenge form dessert dish painted by Frank Roberts, bearing the date mark for 1917, within a heavily gilt border with shell handles, 31 cm x 19 cm **£200-300**



- 231 A Russian Gardner porcelain figure of a City Guard, 1820s, from the Magic Lantern series, 16 cm high, underglaze blue G mark and impressed 7 (or 1)
Literature: *GARDNER, XVIII -XIX, Porcelain Plastic Arts, From Private Collection and Moscow Museums*, page 108, Chapter 4, Magic Lantern - the figure is in the collection of SMC "Kuskovo" - State Museum of Ceramics Kuskovo, Moscow. **£1,200-1,800**



- 232 A Wedgwood rosso antico teapot and cover, early 19th century, with applied Egyptian decoration, the cover with crocodile finial, impressed mark to base, 10 cm high x 21 cm. **£250-350**



The February Fine Art & Antiques Auction, 23rd Feb, 2023 09:30

- 233 A presentation cased 1920s silver framed Grosvenor "Ye Old English" bone china Demitasse coffee set and bean handled coffee spoons for six, the frames and spoons marked for Birmingham 1927.
Private estate **£100-150**



- 234 A South African Ardmore Studio pottery table centerpiece, with central bowl on bulb-shaped column, flanked by two further bowls supported by stylised mermaids, the based decorated with fish, painted in polychrome enamels, 33 cm high x 28 cm diameter, dated 1997 with artist details to base, together with a similar single bowl, 8 cm high x 15 cm diameter, dated 1999.
(Qty: 2) **£300-500**



- 235 A cased Austrian porcelain tea service for twelve persons, early 20th century decorated with scenes of classical figures in landscapes in the manner of Angelica Kaufman, bearing the underglaze blue hatched mark to the bases. 64 cm wide x 51 cm deep x 33 cm high.
A private estate **£300-400**



- 236 A Wedgwood rosso antico small coffee pot and cover, 19th century, with applied neo-classical decoration, 15.5 cm high, together with a squat milk jug, a covered bowl and sauce boat (a/f), all in the Egyptian taste, the bowl 14 cm wide, all with impressed marks to bases.
(Qty: 4) **£350-500**



- 237 A large Wedgwood rosso antico teapot and cover, early 19th century, with applied Egyptian decoration, the cover with crocodile finial, impressed mark to base, 12 cm high x 26 cm.
£300-500



The February Fine Art & Antiques Auction, 23rd Feb, 2023 09:30

- 238 A pair of large late 19th century Wedgwood black basalt circular plaques, depicting neo-classical figures in high relief, impressed marks verso, each 26.5 cm diameter. **£1,000-1,500**



- 239 Wedgwood & Bentley, Etruria: a late 18th century black basalt urn and cover, of Classical form with mask handles, on a square pedestal base, circular impressed mark to underside, 15 cm high. **£700-900**



- 240 A Lladro porcelain ltd edition 516/2000 figure group "May my wish come true" modelled by the masters Ignacio Aliena and Pilar Perez, with accompanying signed and dated 2003 certificate and own wooden base. 24 cm wide x 36 cm overall height.
A private estate **£300-500**



- 241 A collection of white plaster relief panels, late 19th or early 20th century, relief decorated with scenes of Roman and classical figures, some engaged in battle, others in processional scenes, each 6 cm high. **£200-300**



- 242 A large and impressive Ltd edition 929/1500 Lladro porcelain figure group of a young couple and a vintage motor car modelled by the masters Salvador Debon and Julio Ruiz, bearing both signatures ;with signed and dated (2005) certificate of authenticity, and own wooden base. 56 cm long x 40 cm wide x 41 cm high. **£1,000-1,500**



The February Fine Art & Antiques Auction, 23rd Feb, 2023 09:30

- 243 A late 18th-century black basalt oval plaque, probably by Wedgwood and Bentley (unmarked), depicting bacchanalian figures in relief, contained in an integral gilt-painted frame, 19 cm x 22.5 cm. **£700-1,000**



- 244 A pair of German porcelain figural three sconce candelabra, with tre stem stems mounted with a brightly dressed Dandy and his companion on rococo scroll bases bearing blue cross sword device to the underside. 25 cm wide x 31 cm overall height.
A private estate **£200-300**



- 245 An early 19th century Wedgwood black basalt vase, of flared rim form with twin satyr mask decoration, on a spreading circular base, 18.5 cm, together with a similar period jug, of classical design with encaustic painted decoration, gloss finish to the interior, 17 cm high, each with an impressed mark to base.
(Qty: 2) **£800-1,200**



- 246 A large German porcelain flower encrusted two handled trophy form urn and cover, 20th century, with high domed cover with floral basket finial, the cover body and base with a profusion of colourful applied summer blooms and painted with a spray of cut flowers, the base with three scroll feet. 40 cm wide x 90 cm overall height.
A private estate **£200-300**



- 247 A 19th-century Wedgwood sage green Jasper dip canopic jar, (lacking original cover), modelled with bands of Egyptian ornament on a circular foot, impressed marks to base, 15.5 cm high. **£400-600**



The February Fine Art & Antiques Auction, 23rd Feb, 2023 09:30

- 248 A large Wedgwood rosso antico teapot and cover, early 19th century, with applied Egyptian decoration, the cover with crocodile finial, impressed mark to base, 12 cm high x 26 cm.
£350-550



- 249 A Dresden porcelain flower encrusted baluster vase and cover, early/mid 20th century, with high domed cover mounted with a green backed Tit surmount above a body encrusted with summer blooms and fruits and decorated by lovers in romantic landscapes, mounted upon a conforming society base body and base marked with blue factory script mark. 28 cm overall width x 42 cm verbally height.
A private estate **£150-250**



- 250 A Wedgwood rosso antico vase and cover, 19th century, of ovoid form on a circular base, decorated in the Egyptian taste, the cover formed as a chamber stick with looped handle and candle sconce, 19.5 cm high, together with a similar vase, 18.5 cm high, each with impressed mark to base.
(Qty: 2) **£400-600**



- 251 A Wedgwood rosso antico teapot and cover, 19th century, of square form with canted corners, with applied Egyptian decoration, impressed mark to base, 10.5 cm high x 21 cm.
£250-350



- 252 A pair of Meissen porcelain 'Onion' pattern Dutch style squat candlesticks of hexagonal section, early 20th century, on simple moulded spreading bases, bearing blue crossed sword device to base. 9 cm wide x 13 cm overall height.
A private estate **£100-150**



The February Fine Art & Antiques Auction, 23rd Feb, 2023 09:30

- 253 Three 19th century Wedgwood items, comprising an 'Russo Antico' lidded pot, the cover with crocodile finial and the body decorated in the Egyptian taste, 13 cm wide, together with a small encaustic painted oil lamp (lacking cover) and a small black basalt jug, 5 cm high x 10 cm wide.
(Qty: 3) **£250-350**

