

Fine Art, Antiques & Interiors, 24th Nov, 2022 09:30

- 1 Art Derry (20th century) Trinidadian, Blue Skull, signed and dated '64, oil on board, framed, 45.5 x 55.5 cm **£200-300**



- 2 Thomas Eyre Macklin (1867-1943) and William Irving (1866-1943), 'Arcadia', signed and dated 1911, collaborative oil on canvas, framed, 180 cm x 362 cm.
Both Macklin and Irving studied at the Newcastle School of Art under the pupilage of W. Cosen Way. Between 1895 and 1911 Macklin is thought to have returned to his native Newcastle, where Irving had also returned after further studies in Paris.
£2,000-3,000



- 3 † Paul Brown (contemporary), 'Friends by the Sea', oil on board, signed to lower left corner, 23 cm x 28 cm in a gilt frame.
Private collection **£200-300**



- 4 Italian School, 18th Century, Kneeling female figure, her back to the viewer and facing right, unsigned, pencil and red chalk, a copy after the figure left foreground of Raphael's fresco 'The Expulsion of Heliodorus from the Temple', Stanza d'Eliodoro, Vatican, Rome, framed and glazed, 31 x 22 cm,
(Qty: 2)
Purchased Phillips, il Paintings, Watercolours & Prints, lot 139, 15th May 2001. **£100-200**



- 5 † James Field (contemporary), 'Avro Tutor', oil on canvas, signed to lower right corner, 49 cm x 83 cm in a wooden frame.

NB: This lot is being sold on behalf of 'Leonard Cheshire Disability', with all proceeds going to the charity.

This picture, along with others in the sale, are from a collection of twelve works, all with a connection to WWII RAF pilot Leonard Cheshire, for the disability charity set up in his name. The lot comes with an accompanying booklet giving further background. All proceeds from the sale will go to the charity.
£100-200



Fine Art, Antiques & Interiors, 24th Nov, 2022 09:30

- 6 † Roland Lefranc (1931-2000) French, 'Marche', a cattle market, signed and dated 1966, oil on canvas, framed, 79 cm x 99 cm. **£400-600**



- 7 † Kai Choi (contemporary), 'Whitley', 2018, oil on canvas, signed to lower right corner, 60 cm x 91 cm in a wooden frame.

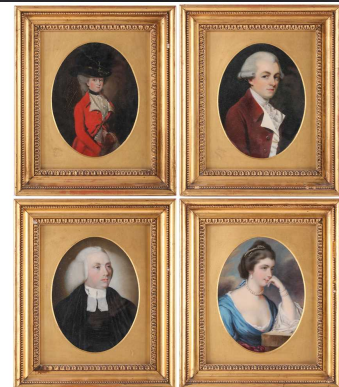
NB: This lot is being sold on behalf of 'Leonard Cheshire Disability', with all proceeds going to the charity.

This picture, along with others in the sale, are from a collection of twelve works, all with a connection to WWII RAF pilot Leonard Cheshire, for the disability charity set up in his name. The lot comes with an accompanying booklet giving further background. All proceeds from the sale will go to the charity. **£100-200**



- 8 G.I. Brodie (late 18th/early 19th century), four oval portraits, purporting to be of the same family: Nathaniel Gooding Clarke (Chief Justice of Brecon), Constance Clarke (nee Stephenson - wife of Nathaniel Gooding Clarke), Rev. Edward Harwood (vicar of Shenstone, Staffordshire) and Miss Farnam (wife of Rev. Edward Clarke), each with attributing label on the reverse, oil on panel, each 20.5 x 15 cm, framed and glazed. (Qty: 4)

The handwritten attributing labels were prepared by descendant I.M. Murray. A further label on each painting described I.M. Murray as Inez M. Murray (nee James) daughter of Harry Berkley James and Constance Lucy James (nee Clarke) who lived at The Oaks in Surrey, the Adam's house... built for Lord Derby..... After the death of her husband Harry James, Constance Lucy James sold The Oaks in 1910. **£800-1,200**



- 9 J.C. Harrison (19th/20th century), a priest with a crow, sleeping or reading, a pair, signed and dated 1887, watercolours, each 31 cm x 21.5 cm framed and glazed. **£200-300**

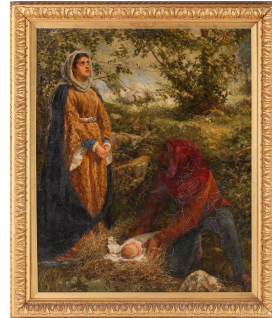


Fine Art, Antiques & Interiors, 24th Nov, 2022 09:30

- 10 Art Derry (20th century) Trinidadian, Tribal Shield, signed and dated '64, oil on canvas, unframed, 91.5 x 61 cm and another by the same artist 'Dance', signed dated '65 and inscribed on the reverse, oil on canvas, framed, 76.5 x 60.5 cm (Qty: 2) **£200-300**



- 11 19th Century English School, Woman with a man taking her child, unsigned, oil on canvas, framed, 60 x 49 cm Purchased Bonhams & Brooks, British & Continental Oil Paintings, 5th June 2001, lot 216G **£200-300**



- 12 Vladimir Terentiev (Russian, b.1932) Lumberers and a backyard of timber - a pair, unsigned, oil on board, framed, 73 x 94 cm (Qty: 2) **£400-600**



- 13 Frederico Montañana (1928 - 2006), Still life with artichokes, signed, oil on canvas, framed, 87 x 144 cm **£150-250**



- 14 † Gino Hollander (1924 - 2015), Reclining Nude, signed and dated 1972, oil on canvas, framed, 82 x 166 cm **£200-300**

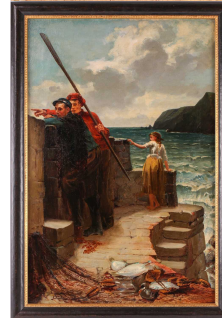


Fine Art, Antiques & Interiors, 24th Nov, 2022 09:30

- 15 † Jean Baptiste Valadié (French b.1933), a nude study of a woman, signed, inscribed on the reverse, oil on canvas, 34 cm x 26 cm, framed, with brochure and exhibition invitations **£150-250**



- 16 Colin Hunter (1841-1904), A Strange Craft, signed and dated 1891, oil on canvas, 76 cm x 50 cm in a wooden frame. Illustrated page 177 'Colin Hunter of the Holland Park Circle' by Godfrey Bell
Part of the Godfrey Bell Collection **£400-600**



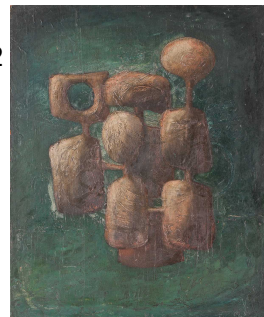
- 17 † Cecil Rochfort D'Oyly John (1906-1993), 'Villefranche', oil on canvas, signed to lower right corner, 34 cm x 70.5 cm in a contemporary frame. **£500-800**



- 18 Miss N Waddell Boyd (19th/20th century) 'White Cliffs at Weymouth', initialled, watercolour, Art |Exhibition 1895 label verso, 20cm x 30.5cm; and P A Beale RWS, Coastal scene with figures and boats, signed, watercolour, 26.5cm x 37cm
From the collection of Lord Naseby. **£100-150**



- 19 Follower of Henry Moore, abstract study in green, oil, on an unframed double sided board, similar work verso, unsigned, 62 cm x 50.5 cm. **£100-150**



Fine Art, Antiques & Interiors, 24th Nov, 2022 09:30

- 20 † Francois Depresle (b.1927), 'Jardin aux Fleurs', oil on canvas, signed to lower right corner, 44 cm x 53 cm in a wooden frame. **£80-120**



- 21 † Ieuan Layton-Matthews (contemporary), 'Leonard Cheshire', oil on canvas, signed to lower right corner and dated 2018, 50 cm x 75 cm in a wooden frame, together with a print of the same work, and a further limited edition black and white print, after the same, numbered 1.50 and pencil signed by the artist. **NB: This lot is being sold on behalf of 'Leonard Cheshire Disability', with all proceeds going to the charity.** (Qty: 3) **£150-250**



- 22 Italian School, possibly 17th century, Lucretia holding a dagger, unsigned, oil on canvas, in an associated Italian style frame, 34 x 28 cm
Purchased Bonhams & Brooks, British & Continental Oil Paintings, 6th June 2001, lot 247. **£200-300**



- 23 Colin Hunter (1841-1904), America's Cup 1876 New York Harbour, bears signature 'Colin Hunter RA', oil on canvas, 62 cm x 87 cm in a gilt frame, together with two other works, depicting boats in a harbour and Norfolk Wherry on a river, both bearing signatures, oil on board, harbour scene 29 cm x 29 cm, Norfolk Wherry 24 cm x 32 cm
(Qty: 3)
Part of the Godfrey Bell Collection **£150-250**



- 24 Ferdinand Max Bredt (1868-1921), pair of portraits of children, one signed the other framed, oil on board, 61.5 x 25.5 cm
(Qty: 2) **£800-1,200**

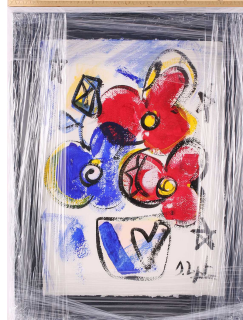


Fine Art, Antiques & Interiors, 24th Nov, 2022 09:30

- 25 † Maurice Canning Wilks (1910 - 1984), Irish Loch in Summer with children fishing, signed, indistinct inscription on the reverse, oil on canvas, framed, 35 x 46 cm **£600-900**



- 26 † Domingo Zapata (b.1974), Untitled - blue and red flowers, signed, oil on paper, framed and glazed with Letter of Provenance from Castle Galleries, 41.5 cm x 30 cm **£800-1,200**



- 27 Italian School, 19th century, Christ among the Doctors, unsigned, pen and brown ink and grey wash heightened with white, framed and glazed, 19 x 40 cm
Purchased Christies, British & Continental Watercolours & Drawings, lot 341, 19th October 2000. **£100-150**



- 28 Enslin Hercules DuPlessis (1894-1978) South African, a still life study of flowers in a vase, oil on board, signed to lower left corner, 39.5 cm x 31 cm in a wooden frame. **£200-300**



- 29 † Fred Uhlman (1901-1985) German, French street scene, oil on board, signed to lower right corner, 29 cm x 35 cm in a wooden frame.
Ex Christie's, 31/10/7. Private collection. **£1,500-2,000**

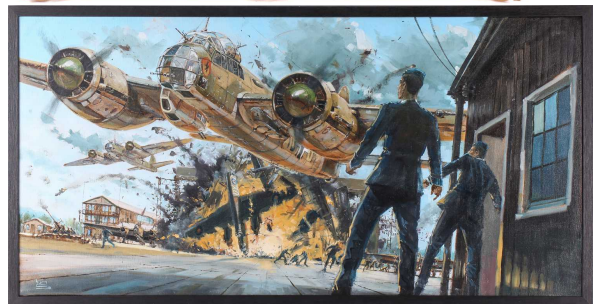


Fine Art, Antiques & Interiors, 24th Nov, 2022 09:30

- 30 Colin Hunter (1841-1904), Fishing Boats Moored on the Shore, signed and dated 1885?, oil on canvas, 39 cm x 75 cm in a gilt frame.
Christie's: Lot 1191 18 Apr 2007
Illustrated page 135 'Colin Hunter of the Holland Park Circle' by Godfrey Bell
Part of the Godfrey Bell Collection **£600-800**



- 31 † Keith Burns (contemporary), 'Ju-88', 2018, oil on canvas, signed to lower left corner, 49 cm x 98 cm in a wooden frame.
NB: This lot is being sold on behalf of 'Leonard Cheshire Disability', with all proceeds going to the charity.
This picture, along with others in the sale, are from a collection of twelve works, all with a connection to WWII RAF pilot Leonard Cheshire, for the disability charity set up in his name. The lot comes with an accompanying booklet giving further background. All proceeds from the sale will go to the charity.
£100-200



- 32 P. Hattasotana, Thai floating market, signed and dated 1997, oil on canvas, framed, 78.5 x 98 cm **£200-300**



- 33 Alexander Lopoukov (b. 1924 - Kiev), Man on a bicycle, signed and dated '76, oil on canvas, framed, 100 x 60 cm **£200-300**



- 34 Earl George Alexander Eugene Douglas Haig OBE ARSA FRSA (British, 1918-2009), A continental townscape with river, signed Haig lower left, watercolour and pencil, 24c x 40cm
From the collection of Lord Naseby. **£300-500**



Fine Art, Antiques & Interiors, 24th Nov, 2022 09:30

- 35 Colin Hunter (1841 - 1904), 'The Cliffs at Beer, Devon', signed and dated 1879, oil on canvas, 50.5 cm x 29.5 cm in a gilt frame.
Illustrated page 185 'Colin Hunter of the Holland Park Circle' by Godfrey Bell
Part of the Godfrey Bell Collection **£150-250**



- 36 R Benedict (19th century), 'Good Doggie' & 'Pretty Pussy', one signed, oils on canvas, each with applied contemporary handwritten ink inscription verso, and Savage Fine Art label, 19.5cm x 14.5cm
From the collection of Lord Naseby. **£150-250**



- 37 Fanny Violet Shoosmith (1887 - 1924), A Coastal scene, with figures on the beach, signed, watercolour, 27.5cm x 39cm & A rural lane with maid and cattle, initialled FVS, watercolour, 20.5cm x 29.5cm, each with applied Savage Fine Art typed biography verso.
From the collection of Lord Naseby. **£150-250**



- 38 Frederick Miller, 19th century, (exh: 1880 - 1892), Ships moored in an estuary, signed, watercolour, Krios Gallery label verso, 24cm x 43cm, together with a pair of watercolours by Frederick James Aldridge (1850 - 1933), Fishing smacks, each monogrammed JA, each with Savage Fine Art label and short typed biography verso, 7cm x 17.5cm,
From the collection of Lord Naseby. **£150-250**



- 39 French School, 19th century, Cavalry on a busy street, signed under the mount, pencil and monochrome watercolour, framed and glazed, 21 x 16 cm and another watercolour of Italian villas on a hillside, unsigned, framed and glazed, 12 x 16 cm (Qty: 2)
Cavalry scene purchased Phillips, Old Master Paintings & Drawings Part II, 10th July 2001, lot 351 **£150-200**



Fine Art, Antiques & Interiors, 24th Nov, 2022 09:30

- 40 Colin Hunter (1841-1904), Back Safely under the White Cliffs of Beer, signed, oil on canvas, 35.5 cm x 61 cm in a gilt frame. Illustrated page 184 'Colin Hunter of the Holland Park Circle' by Godfrey Bell
Part of the Godfrey Bell Collection **£200-300**



- 41 † Laurent Moonens (1911-1991) Belgian, a valley village, signed, oil on canvas, framed, 54 cm x 73 cm **£200-300**



- 42 Hugh David Sawrey (1919-1999) Australian, [The Wild Colonial Boy] - 'The Getaway', large oil on canvas, signed to lower right corner, 75 cm x 100.5 cm in a gilt frame. Private collection **£2,000-3,000**



- 43 John Swinton Spooner (exhb: 1857- 76), A woman & child by a river bank, monogrammed and dated Jun 66, watercolour, 14.5cm x 23cm; T J Soper (1836 - 90) 'Views f the Thames - Walton Bridge' & 'Sonning Lock', signed, watercolours, 15cm x 23.5cm
From the collection of Lord Naseby. **£150-250**



- 44 Colin Hunter (1841-1904), Fishing boats unloading at a quay, signed and dated 1891, oil on canvas, 56 cm x 41 cm framed glazed. Illustrated page 178 'Colin Hunter of the Holland Park Circle' by Godfrey Bell
Part of the Godfrey Bell Collection **£300-500**



Fine Art, Antiques & Interiors, 24th Nov, 2022 09:30

- 45 Henry Bright (1810 - 1873) 'A Highland Loch by Moonlight', coloured chalk, Richard & Georgina Ivor label verso, 21.5cm x 31.5cm
From the collection of Lord Naseby. **£150-250**



- 46 † Joe Scarborough (b.1938), two acrylics on canvas, similar city scenes, each signed and one dated '89, c. 34 cm x 44 cm on wooden frames.
(Qty: 2) **£600-800**



- 47 † Donald Hamilton Fraser ARA (1929-2009) British, 'Petronchka - Blue & Green', oil on paper, signed to lower right corner, 55 cm x 45.5 cm framed and glazed.
Private collection. Ex lot 317, Christie's, 4/12/02. **£700-1,000**



- 48 19th century Continental school, Haymaking in a lakeside landscape, unsigned, oil on canvas, framed, 43.5 x 54 cm
Purchased Lots Road Galleries, lot 303, 2nd April 2001 **£200-300**



- 49 † Rodney Diggins (contemporary), 'Hawker Hart', oil on canvas, signed to lower left corner, 55 cm x 75 cm in a wooden frame.

NB: This lot is being sold on behalf of 'Leonard Cheshire Disability', with all proceeds going to the charity.

This picture, along with others in the sale, are from a collection of twelve works, all with a connection to WWII RAF pilot Leonard Cheshire, for the disability charity set up in his name. The lot comes with an accompanying booklet giving further background. All proceeds from the sale will go to the charity. **£100-200**



Fine Art, Antiques & Interiors, 24th Nov, 2022 09:30

- 50 19th Italian School, Couples making Cats Cradles - a pair, indistinctly signed, oil on panel, framed and one glazed, 31 x 18.5 cm **£150-250**



- 51 † Alan Stones (b. 1947), 'Long Shadows - Cumbria', signed and inscribed on the reverse, oil on canvas, 36 cm x 61 cm in a gilt frame.
Commissioned by the vendor from a photograph sent to the artist. **£300-500**



- 52 English School, 19th century, A still life of dead game, unsigned, oil on panel, 25.5 x 21.5 cm
Purchased Phillips, Oil Paintings, Watercolours & Prints, lot 270, 15th May 2001. **£150-250**



- 53 † Chris French (contemporary), 'B-29', oil on canvas, signed to lower right corner, 49 cm x 74 cm in a wooden frame.
NB: This lot is being sold on behalf of 'Leonard Cheshire Disability', with all proceeds going to the charity.
This picture, along with others in the sale, are from a collection of twelve works, all with a connection to WWII RAF pilot Leonard Cheshire, for the disability charity set up in his name. The lot comes with an accompanying booklet giving further background. All proceeds from the sale will go to the charity. **£100-200**



- 54 Antoine Bouvard (1875-1957) French, Venice canal with gondolas, oil on canvas, signed to lower left corner, 31.5 cm x 39.5 cm in a gilt frame. **£1,800-2,200**



Fine Art, Antiques & Interiors, 24th Nov, 2022 09:30

- 55 † Simon Cattlin (contemporary), 'Leopard Moth / Flying Visit to Stowe', 2018, oil on canvas, signed to lower right corner, 60 cm x 75 cm in a wooden frame.

NB: This lot is being sold on behalf of 'Leonard Cheshire Disability', with all proceeds going to the charity.

This picture, along with others in the sale, are from a collection of twelve works, all with a connection to WWII RAF pilot Leonard Cheshire, for the disability charity set up in his name. The lot comes with an accompanying booklet giving further background. All proceeds from the sale will go to the charity.

£100-200



- 56 Nikolai Daniline (b.1925) Moored Boats, signed in cyrillic, oil on board, dated 1972 on the reverse, framed, 33 x 50 cm (Qty: 3) **£150-250**



- 57 Thurston Laidlaw Shoosmith (1865 - 1933), 'A Quarry near Plymouth' & 'A Tributary of the Severn', signed, watercolours, each with applied original handwritten ink inscribed label and Savage Fine Art labels verso, the Quarry with further label for 'Walker's Galleries 12th Exhibition of Pastoral Watercolours 1929'.

From the collection of Lord Naseby. **£200-300**



- 58 † Joe Scarborough (b.1938), city scene, a train crossing a viaduct, acrylic on canvas, signed and dated '88, 75 cm x 71 cm in a wooden frame, together with a limited edition signed print, 'Evening Papers and Hillsborough Corner', numbered 18/500, 41 cm x 49.5 cm, and a further limited edition print, 'Ella Harland's Whitby', 50 cm x 52 cm, each framed and glazed.

(Qty: 3) **£800-1,200**



- 59 James Baylie Allan (1803 - 1876), Bathampton Mill and Weir, Nr Bath, signed, oil on canvas, framed, 60 x 105.5 cm **£100-200**



Fine Art, Antiques & Interiors, 24th Nov, 2022 09:30

- 60 Harry Goodwin (1842-1925), Baveno and Lake Maggiore, signed and dated, 1887, watercolour, 34 cm x 50 cm, together with another of Lake Lucerne, monogrammed and dated 1887, watercolour, 29.5 cm x 49.5 cm, each framed and glazed. (Qty: 2) **£200-300**



- 61 Continental School, 19th Century, Portrait of a Shepherd Girl, initialled L.N. and dated 1854, oil on canvas, framed, 40 x 36.5 cm
Purchased Phillips, Oil Paintings, Watercolours & Prints, lot 294, estimate £500 - 600, 1st February 2000. **£200-300**



- 62 Colin Hunter (1841-1904), Stormy Seas, signed and dated 1874, oil on canvas, 36 cm x 61.5 cm in a gilt frame.
Illustrated page 97 'Colin Hunter of the Holland Park Circle' by Godfrey Bell
Part of the Godfrey Bell Collection **£180-250**



- 63 † David Humphreys (1901-1970), 'Farmhouse, Montgomeryshire, North Wales', oil on board, signed to lower left corner, 59 cm x 59.5 cm in a contemporary frame. **£200-300**



- 64 Alexander Fraser RSA (1827-1899), 'At the Trossachs, Loch Venachar', oil on canvas, signed to lower right corner, 34 cm x 59.5 cm in a gilt frame. **£200-300**



Fine Art, Antiques & Interiors, 24th Nov, 2022 09:30

- 65 † Fred Uhlman (1901-1985) German, 'Churchyard', oil on board, signed to lower left corner, 48 cm x 62 cm in a wooden frame. **£2,000-3,000**



- 66 Sir James Lawton Wingate (1846-1924), 'From Near the Porta St Sebastian - 1867', signed, watercolour, framed and glazed, labels on the reverse including The Fine Art Society, 12.5 x 35 cm and two other watercolours by the same artist of a Tuscan street and Venice, 26.5 x 14.5 cm (Qty: 3)
Private collection. **£400-600**



- 67 † Paul Brown (contemporary), two ladies seated on a beach, oil on canvas, signed to lower left corner, 38.5 cm x 48.5 cm in a gilt frame. **£300-500**



- 68 † Jean Axatard (b.1931) French, figures in a snowy village, oil on canvas, signed to lower left corner, 26 cm x 21 cm in a wooden frame. **£200-300**



- 69 † Jean Axatard (b.1931) French, figures in a snowy town, oil on canvas, signed to lower left corner, 20.5 cm x 25.5 cm in a gilt frame. **£200-300**



Fine Art, Antiques & Interiors, 24th Nov, 2022 09:30

- 70 † Roland Lefranc (1931-2000) French, 'Paysage à Ste. Euphémie', signed and dated 1970, oil on canvas, 89 cm x 116 cm in a wooden frame. **£600-800**



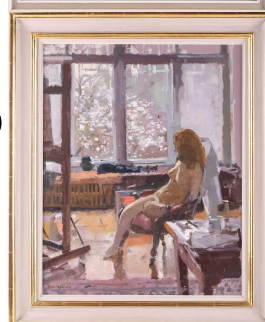
- 71 † Ian Houston (1934-2021), 'Felixstowe at Low Tide', oil on board, signed to lower left corner, 24 cm x 34 cm in a contemporary frame.
Private collection. Mandell's Gallery label verso **£600-800**



- 72 Attributed to William Heath Robinson (1872-1944), Old lady reading, pencil and watercolour sketch, inscribed on the reverse, 'Water Sketch by W. Heath Robinson Inscribed on back to Anne James from Josephine Heath Robinson as a memento for television programme on W.H.R. June 1972', 24 cm x 19 cm framed and glazed.
Anne James was a producer and director for the BBC specialising in Arts programming. She would later become an Executive Producer of Michael Palin's various travelogue series for the BBC. **£300-500**



- 73 † Ken Howard (1932-2022), 'Sally and the Victorian Chair', oil on canvas, signed to lower left corner, 50 cm x 40.5 cm in a wooden frame.
Private collection, ex lot 117, Bonhams, 28/05/02 **£2,500-3,000**

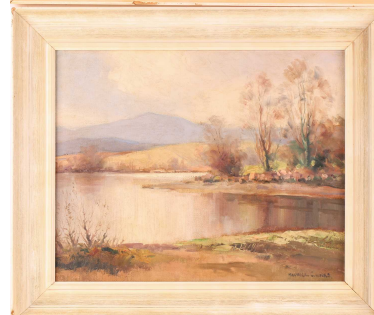
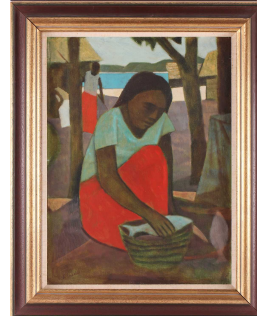


- 74 † Ian Houston (1934-2021), 'Summer Sunlight - Deauville', oil on board, signed to lower left corner, 21.5 cm x 26.5 in a contemporary frame. **£600-800**



Fine Art, Antiques & Interiors, 24th Nov, 2022 09:30

- 75 † Dora Maar (1907-1997) French, 'Automne', oil on canvas, signed verso, 18 cm x 22.5 cm in a wooden frame.
Private collection **£500-700**
- 76 Ray Austin Crooke (1922-2015) Australian, 'Woman with Fish', oil on canvas, signed to lower left corner, 60 cm x 45 cm in a wooden frame.
Private collection, Holdsworth Galleries (Woolhara, NSW) label verso **£2,000-3,000**
- 77 † Maurice Canning Wilks (1910 - 1984), 'At Rossglass, Near Tyrella, Co. Down', signed, inscribed on the reverse, oil on board, framed, 29 x 38.5 cm **£400-600**
- 78 † Maurice Canning Wilks (1910 - 1984), 'McAuley's Lake, Ballynahinch, Co Down', signed, inscribed on the reverse, oil on canvas, framed, 40.5 x 51 cm **£400-600**
- 79 † Tony Cowland (contemporary), 'Mustang', oil on canvas, signed to lower right corner and dated 2018, 60 cm x 87 cm in a wooden frame.
NB: This lot is being sold on behalf of 'Leonard Cheshire Disability', with all proceeds going to the charity.
This picture, along with others in the sale, are from a collection of twelve works, all with a connection to WWII RAF pilot Leonard Cheshire, for the disability charity set up in his name. The lot comes with an accompanying booklet giving further background. All proceeds from the sale will go to the charity.
£100-200



Fine Art, Antiques & Interiors, 24th Nov, 2022 09:30

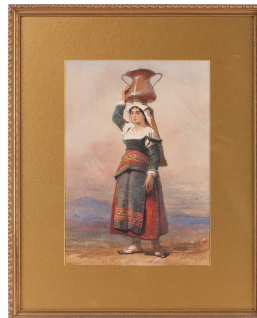
- 80 Colin Hunter (1841-1904), Fishermen, signed and dated 1874, oil on canvas, 35 cm x 61 cm in a wooden frame. Illustrated page 125 'Colin Hunter of the Holland Park Circle' by Godfrey Bell
Part of the Godfrey Bell Collection **£400-600**



- 81 Art Derry (20th century) Trinidadian, 'On the Beach', signed and dated 65, inscribed on the reverse, oil on canvas, unframed, 60.5 x 76.5 cm and another by the same artist 'Carnival Beast', signed and dated 65, inscribed on the reverse, oil on canvas, unframed, 76.5 x 61 cm (Qty: 2) **£200-300**



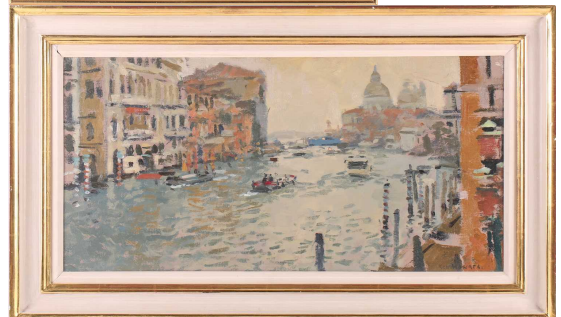
- 82 Carl Haag (German, 1820-1915), The Water Carrier, signed and dated 1857, pencil & watercolour, 34.5 cm x 24 cm framed and glazed. Purchased Christies, lot 43, British & Continental Watercolours & Drawings, 3rd May 2001. **£200-300**



- 83 † David Humphreys (1901-1970), 'Cottage with a Slate Fence', oil on board, signed to lower left corner, 36 cm x 44 cm in a contemporary frame. **£200-300**



- 84 † Ken Howard (1932-2022), 'Grand Canal, Venice', oil on canvas, signed to lower right corner, 29 cm x 59 cm in a wooden frame. Private collection, Ex lot 169, Christie's, 03/05/05 and Chorley's, 27/3/14. **£3,000-5,000**



Fine Art, Antiques & Interiors, 24th Nov, 2022 09:30

- 85 † Bruce Mackay (contemporary), 'Mosquito', oil on canvas, signed to lower right corner, 59 cm x 79 cm in a wooden frame.

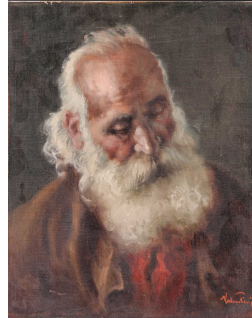
NB: This lot is being sold on behalf of 'Leonard Cheshire Disability', with all proceeds going to the charity.

This picture, along with others in the sale, are from a collection of twelve works, all with a connection to WWII RAF pilot Leonard Cheshire, for the disability charity set up in his name. The lot comes with an accompanying booklet giving further background. All proceeds from the sale will go to the charity.

£100-200



- 86 Mid-20th century Continental school, Study of a bearded man, indistinctly signed, oil on canvas mounted on board, unframed, 51 cm x 40.5 cm **£200-300**



- 87 19th century English School, a pair of scenes of Kashmir, initialled 'CR' and inscribed, watercolours, 16.5 cm x 25 cm and 17 cm x 23 cm, each framed and glazed.
(Qty: 2) **£200-300**



- 88 † Roland Lefranc (1931-2000) French, 'La Récolte des Pommes de Terre', signed and dated 1978, oil on canvas, framed, 73 cm x 92 cm. **£700-1,000**



- 89 Late 19th century Italian School, a courtier dressed in red, indistinctly signed, watercolour, framed and glazed, 34 x 22 cm, and a 19th century oil sketch on board of group of figures with a dog, framed, 20 x 28 cm
(Qty: 2) **£150-200**



Fine Art, Antiques & Interiors, 24th Nov, 2022 09:30

- 90 Colin Hunter (1841-1904), *The Coast of Devon*, signed and dated 1894, oil on canvas, 44 cm x 82 cm in a wooden frame. Christie's: Lot 453 - 30 Mar 2010
Illustrated page 181 'Colin Hunter of the Holland Park Circle' by Godfrey Bell
Part of the Godfrey Bell Collection **£300-500**



- 91 † Attributed to John Piper, *'Albert Road, London'* - depicting Albert Bridge, inscribed 'John Piper' in pencil, watercolour on paper mounted on card. The card inscribed in pencil 'Commission for Sir John Betjeman Oct 1975 'Shell Guides' and on the reverse 'Bob Lewin', unframed, image 24.5 x 45.5 cm, card 38 x 51 cm
Bob Lewin was an art dealer who represented John Piper in his Brook Street Gallery. Upon retirement, Lewin bequeathed much of his collection of John Piper's works to the Ashmolean Museum in Oxford. There is no Shell Guide to London, and this work may have been preparatory to an edition that was never published. Both Sir John Betjeman and John Piper were editors for the 'Shell Guides'. **£1,500-2,500**



- 92 Colin Hunter (1841-1904), *'On the Coast of Scotland'*, bears signature, attributed on the frame, oil on canvas, 34 cm x 52 cm framed and glazed. Ross's Auctions Belfast: May 2017 - From the estate of E. Falloon, Co Down
Illustrated page 242 'Colin Hunter of the Holland Park Circle' by Godfrey Bell
Part of the Godfrey Bell Collection **£200-300**



- 93 † Maurice Canning Wilks (1910 - 1984), *'Winter, Glendurn (sic.) Co. Antrim'*, signed, inscribed on the reverse, oil on canvas, framed, 35.5 x 46 cm **£500-800**



- 94 Allesandro Sani (Italian, 1856 - 1927), *A Fine Vintage*, signed, oil on canvas, framed, 62 x 47 cm
Purchased Phillips, Oil Paintings, Watercolours & Prints, lot 122, 9th January 2001. **£400-500**



Fine Art, Antiques & Interiors, 24th Nov, 2022 09:30

- 95 † J. Barlien, Winter scene with white building, signed, oil on canvas, framed, 46 cm x 62 cm, together with 20th century French School, Summer field, indistinctly signed, oil on canvas, framed, 60 cm x 73 cm
(Qty: 2) **£150-250**



- 96 Antoine Bouvard (1875-1957) French, Venice canal with gondola, oil on canvas, signed to lower right corner, 36.5 cm x 44 cm in a gilt frame.
Private collection **£3,000-5,000**



- 97 † David Tindle (b.1932), 'David's Jeans', egg tempura, monogrammed to lower right corner, 26.5 cm x 36.5 cm framed and glazed.
Private collection. Brandles Galleries label verso **£400-600**



- 98 Leo Herrmann (1853-1927) French, A Pensive Priest, signed, oil on panel, 15 cm x 10 cm in an ebonised frame.
Christie's London - 5th April 2001 **£1,000-1,500**



- 99 Peter Newcombe (b.1943) 'Towards Greens Norton', Bromham Bridge' & 'Summer Meadow', each signed, the watercolours/gouaches dated 1987 & 1998, Summer meadow, oil on panel, each watercolour with typed biography verso, all with Savage Fine Art labels applied verso, 24cm x 29cm, 17cm x 24cm & 11cm x 17cm
(Qty: 3)
From the collection of Lord Naseby **£200-300**



Fine Art, Antiques & Interiors, 24th Nov, 2022 09:30

- 100 Colin Hunter (1841-1904), 'Kelp Burning', signed and dated 1876, oil on canvas, 56 cm x 96 cm in a gilt frame.
Illustrated page 99 'Colin Hunter of the Holland Park Circle' by Godfrey Bell **£600-800**



- 101 Thurston Laidlaw Shoosmith (1865 - 1933), 'Rochester' & 'Laon (France)', signed, watercolours, each with original handwritten ink inscribed label and with Savage Fine Art label verso, 23cm x 36cm & 27cm x 27.5cm
From the collection of Lord Naseby **£200-300**



- 102 Attributed to Vladimir Terentiev (1932), Trees in a landscape with bridge beyond, inscribed Terentiev on stretcher, oil on canvas, framed, 99 x 119 cm **£200-300**



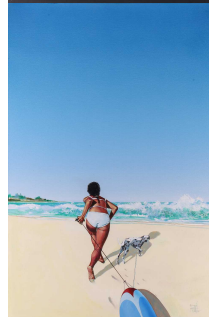
- 103 † David Young (contemporary), 'Halifax', 2018, oil on canvas, signed to lower right corner, 58 cm x 83 cm in a wooden frame.

NB: This lot is being sold on behalf of 'Leonard Cheshire Disability', with all proceeds going to the charity.

This picture, along with others in the sale, are from a collection of twelve works, all with a connection to WWII RAF pilot Leonard Cheshire, for the disability charity set up in his name. The lot comes with an accompanying booklet giving further background. All proceeds from the sale will go to the charity. **£100-200**



- 104 † Mike Francis (b.1938), 'Dog Day Afternoon', signed, inscribed on the reverse, acrylic on canvas, unframed, 91 x 61 cm
Stock labels for Messum's Gallery, Marlow and Panter & Hall, Pall Mall **£200-300**



Fine Art, Antiques & Interiors, 24th Nov, 2022 09:30

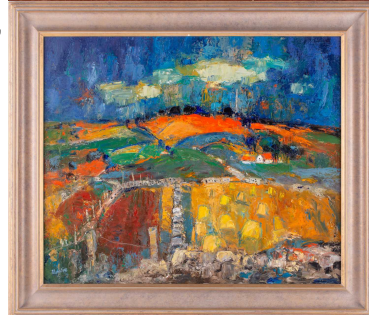
- 105 Colin Hunter (1841-1904), Harbour Scene, signed and dated 1887, oil on canvas, 41 cm x 76 cm in a gilt frame.
Illustrated page 133 'Colin Hunter of the Holland Park Circle' by Godfrey Bell
Part of the Godfrey Bell Collection **£300-500**



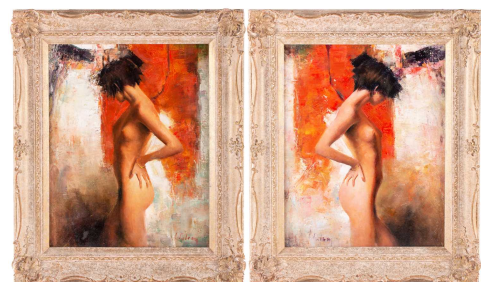
- 106 † James Lloyd (1905-1974), 'Danny Kaye as a Monk', signed and dated 1955, watercolour and gouache, framed and glazed, 34 x 24 cm, with correspondence between the original owner, Anne James, and the artist.
Anne James was Assistant to the Director, Ken Russell, for the 1960s BBC series 'Monitor'. 1964 saw an edition of Monitor called Alfred Hitchcock/ The Dotty World of James Lloyd, and a note attached to the painting states that it was purchased during the filming of this episode by Anne. Anne James was to be a producer and director of Arts programmes herself and later became an Executive Producer of Michael Palin's various travelogue series for the BBC. Other correspondence with the lot mentions James Lloyd's part in Ken Russell's Monitor episode on Henri Rousseau - 'Always on a Sunday' (including possibly Lloyd's line for the part), and being asked to create an illustration for 'The Beatles Illustrated Lyrics'. **£400-600**



- 107 † Alexander Merrie Hardie (1910-1989), 'Ross-Shire, Summer', oil on panel, signed to lower left corner, 49 cm x 59 cm in a contemporary frame. **£300-500**



- 108 20th Century Continental School, studies of a female nude, a pair, indistinctly signed, oil on canvas, 40 cm x 32 cm in wooden frames.
(Qty: 2) **£150-250**



Fine Art, Antiques & Interiors, 24th Nov, 2022 09:30

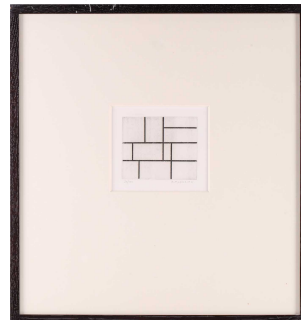
- 109 † Terry Frost (1915-2003), abstract collage in relief, mixed media, 29 cm x 37 cm framed and glazed.
Private collection. Exhibited by Sims Gallery, St Ives. Comes with an accompanying postcard, signed by the artist, depicting this work and promoting an exhibition to mark Frost's 80th birthday, 2nd - 30th September 1995. **£400-600**



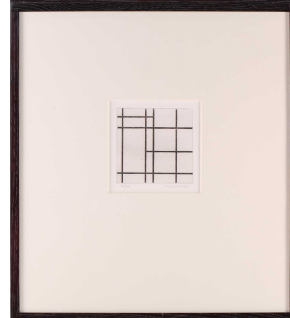
- 110 † Adeline De Monseignat (b.1987) Dutch, Hairy Eye Ball, synthetic fur, pillow filler and handblown glass, 30 cm diameter **£800-1,200**



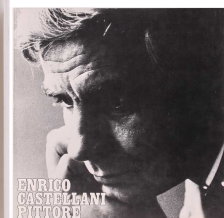
- 111 Attributed to Piet Mondrian (1872-1944), Gridlines in black lines, linocut on paper, signed and numbered in pencil 24/100, 9.5 x 11.5cm **£600-800**



- 112 Attributed to Piet Mondrian (1872-1944), Gridlines in black lines, linocut on paper, signed and numbered in pencil 24/100, 12 cm x 12cm **£600-800**

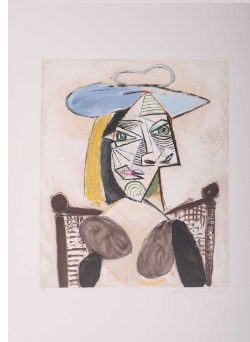
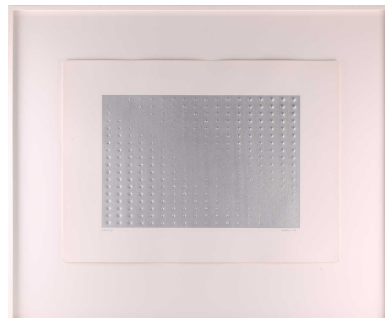


- 113 † Enrico Castellani (1930-2017), Estroflessione Multiplo, PVC, Achille Mauri Editore, Milan, 1968, edition of 1000, thermoformed plastic object, 30 cm x 30cm **£1,400-1,800**



Fine Art, Antiques & Interiors, 24th Nov, 2022 09:30

- 114 † Enrico Castellani (1930-2017), *Superficie Argento*, signed and dated in pencil '74, AP 2/7, silver screenprint in relief on paper, image size 36 x 54cm, overall size 56 cm x 77 cm, framed and glazed. **£1,000-1,500**
- 115 Herman Moll, *The Southern Part of Great Britain called England and Wales*, map, dated 1710, dedicated to Francis Lord Viscount Rialton, with an alphabetical table of cities, market towns and boroughs, later hand colouring, framed and glazed, 61 x 99 cm **£200-300**
- 116 † After Pablo Picasso (1881 - 1973) '*Fillette Couronee au Bateau*', Picasso Estate Collection limited edition colour lithograph, signed and numbered in pencil 'Collection Marina Picasso, 457/500', with blind stamps 'A Limited Edition After A Work By Pablo Picasso' & 'Circular Grid", printed verso in English & French 'Limited edition re-creation of an oil on canvas entitled "*Fillette Couronee au Bateau*" by Pablo Picasso created on June 12, 1939, Approved by the Heirs of Pablo Picasso' and '© National Machine Systems, Inc, 1982', on Arches paper, with certificate of authenticity, Image approximately 57.5cm x 46cm, Overall 75cm x 54.3cm A private estate. **£300-500**
- 117 † After Pablo Picasso (1881 - 1973) '*Femme au Fauteuil Canne*', Picasso Estate Collection limited edition colour lithograph, signed and numbered in pencil 'Collection Marina Picasso, 25/500', with blind stamps 'A Limited Edition After A Work By Pablo Picasso' & 'A Bull', printed verso in English & French 'Limited edition re-creation of an oil on canvas entitled "*Femme au fauteuil Canne*" by Pablo Picasso created on May 21, 1939, Approved by the Heirs of Pablo Picasso' and '©James E Brown D/B/AJ & J Master Art Works, 1982', on Arches paper, with certificate of authenticity, Image 50cm x 41.5cm, Overall 75.8cm x 55.7cm **£300-500**
- 118 Francis Seymour Haden (1818 - 1910), '*Early Morning Richmond Park*', drypoint etching, inscribed within the plate 'The lark at Heavens Gate', initialed and indistinctly dated within the plate, plate 11cm x 27cm and '*Fulham*', inscribed within the plate, plate 11.5cm x 28cm, (Qty: 2)
The collection of Joan Elizabeth Mary Streeter. Fulham purchased from Michael Parkin Gallery. **£90-110**

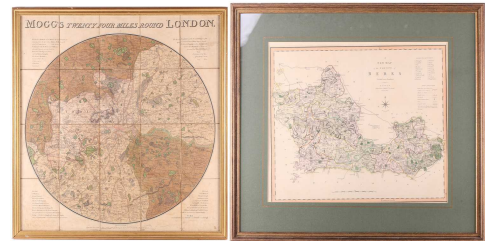


Fine Art, Antiques & Interiors, 24th Nov, 2022 09:30

- 119 20th century school, study of a nude, lithograph, indistinctly signed in pencil, Artist's Proof 18/25, 71 x 49 cm **£100-150**



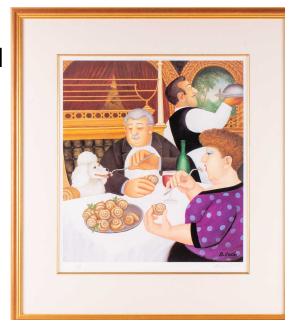
- 120 Edward Mogg (1803-1860), Mogg's Twenty Four Miles Round London, Published Jan. 1st 1812, the circular hand-coloured map with descriptive corners, folding linen backed now framed and glazed, 61.5 x 57 cm, and Charles Smith - A New Map of the County of Berks Divided into Hundreds, Jan. 6th 1804, later hand-coloured, framed and glazed, 44.5 x 50 cm (Qty: 2) **£150-250**



- 121 After David Roberts, six hand-coloured lithographs - 'St Jaen d'Acre April 24th 1839', signed and dated in the print 1839, 35.5 x 51 cm; 'Jacobs Well at Shechem April 17th 1839' signed in the print, 36 x 52 cm; 'Petra Looking South March 9th 1839' signed in the print, 35.5 x 51 cm; 'Temple called El Khasne Petra March 7th 1839' signed in the print (Louis Haghe Lithographer, 48.5 x 33.5 cm; all above trimmed and mounted on board, framed and glazed; 'Cairo from the Gate of Citizenib, looking towards the Desert of Suez', signed in the print and L. Haghe Lith., published by F.G. Moon 1849, sepia title under the mount, framed and unglazed, 33 x 49 cm; 'The Entrance to the Citadel of Cairo', signed in the print and L. Haghe Lith., published by F.G. Moon 1849. framed and glazed, 32 x 48.5 cm (Qty: 6) **£300-500**

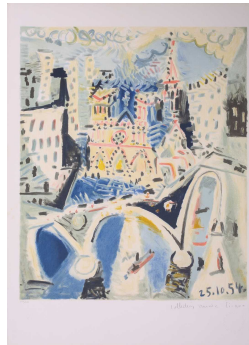


- 122 † Beryl Cook (1926-2008), 'Dining In Paris', signed limited edition print numbered 334/650, 48.5 cm x 42.5 cm framed and glazed. **£150-200**



Fine Art, Antiques & Interiors, 24th Nov, 2022 09:30

- 123 † After Pablo Picasso (1881 - 1973) 'Notre Dame', Picasso Estate Collection limited edition colour lithograph, signed and numbered in pencil 'Collection Marina Picasso, 232/500', with blind stamps 'A Limited Edition After A Work By Pablo Picasso' & a motif, printed verso in English & French 'Limited edition re-creation of an oil on canvas entitled "Notre Dame" by Pablo Picasso created October 25, 1954, Approved by the Heirs of Pablo Picasso' and '© Beatrice Dwork 1979', on Arches paper, with certificate of authenticity, Image approximately 60cm x 50cm, Overall 75.5cm x 55.5cm



- 124 Loudon Sainthill (1919 - 1969), 'Design for a Back-Cloth' - Landscape with Classical columns, unsigned, pastel and watercolour, framed and glazed, Redfearn Gallery label to the reverse dated November 1973, 35 x 50 cm **£400-600**



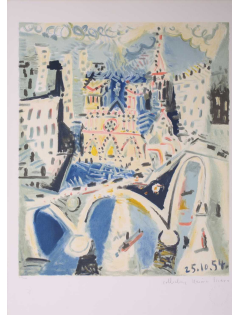
- 125 † After Pablo Picasso (1881 - 1973) 'Femme au Fauteuil Canne', Picasso Estate Collection limited edition colour lithograph, signed and numbered in pencil 'Collection Marina Picasso, 20/500', with blind stamps 'A Limited Edition After A Work By Pablo Picasso' & 'A Bull', printed verso in English & French 'Limited edition re-creation of an oil on canvas entitled "Femme au fauteuil Canne" by Pablo Picasso created on May 21, 1939, Approved by the Heirs of Pablo Picasso' and '©James E Brown D/B/AJ & J Master Art Works, 1982', on Arches paper, with certificate of authenticity, Image 50cm x 41.5cm, Overall 75.8cm x 55.7cm
A private estate. **£300-500**



- 126 † Loudon Sainthill (1919 - 1969), 'The Pantheon Set', unsigned, pastel and white, Redfearn Gallery label on the reverse dated November 1973, framed and glazed, 27 x 38 cm **£300-500**

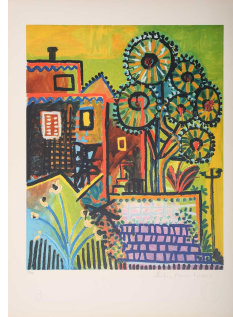


- 127 † After Pablo Picasso (1881 - 1973) 'Notre Dame', Picasso Estate Collection limited edition colour lithograph, signed and numbered in pencil 'Collection Marina Picasso, 233/500', with blind stamps 'A Limited Edition After A Work By Pablo Picasso' & a motif, printed verso in English & French 'Limited edition re-creation of an oil on canvas entitled "Notre Dame" by Pablo Picasso created October 25, 1954, Approved by the Heirs of Pablo Picasso' and '© Beatrice Dwork 1979', on Arches paper, with certificate of authenticity, Image approximately 60cm x 50cm, Overall 75.5cm x 55.5cm **£300-500**



Fine Art, Antiques & Interiors, 24th Nov, 2022 09:30

- 128 † After Pablo Picasso (1881 - 1973) 'Paysage', Picasso Estate Collection limited edition colour lithograph, signed and numbered in pencil 'Collection Marina Picasso', number 143/500, with blindstamps 'A Limited Edition After A Work By Pablo Picasso' & 'Dtamerin', printed verso in English & French 'Limited edition re-creation of an oil on canvas entitled "Paysage" by Pablo Picasso created in 1937, Approved by the Heirs of Pablo Picasso' & '© Stirling Silliphant 1980', on Arches paper, with certificate of authenticity, 73.5cm x 54cm
A private estate. **£300-500**



- 129 Jules Henri Delavallee (1862 - 1943) Angelique a la Fenetre, soft ground etching & aquatint, circa 1890/91, signed & dated withing the plate, image 20.5cm x 15cm; together with Sir John Charles Robinson (1824 - 1913) Rain & Wind - a swollen burn at Shandon, etching, signed in pencil within the margin, circa 1872, plate 21cm x 26cm; Leopold Flameng (1831 - 1911) Meyron sitting up in bed, soft ground etching, 1858, taken at the mental hospital of Chareton, signed within the plate, image 22cm x 27cm, Maurice Der Vlaminck (1876 - 1958) L'Eglise & Le Chambre de L'Horloge, drypoint, from 'Visages des Maison' & 'Les Hommes Abandonnes', proof, image 9.5cm x 16cm & 10cm x 16cm
(Qty: 5)

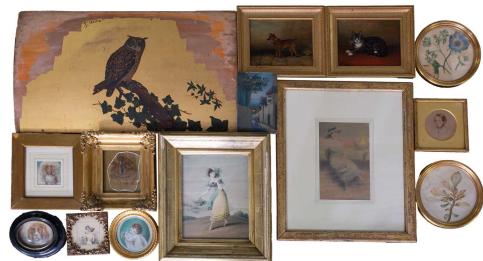


The collection of Joan Elizabeth Mary Streeter. J C Robinson & Flameng purchased Craddock & Barnard, June 1971 and October 1985 respectively. Delavallee and De Vlaminck purchased Elizabeth Harvey - Lee, November 2002 & Februaruy 1999 respectively. **£100-150**

- 130 † After Pablo Picasso (1881-1973), two portraits of Dora Maar, bearing pencil signatures, and numbered editions of 10, two etchings, 13 cm x 11cm and 13 cm x 9 cm each framed and glazed. **£200-300**



- 131 Early 20th Century English School, Study of a seated lady in a restaurant, unsigned, pastel, 23 x 15 cm; G. West, figures on a street, signed and dated 1926, oil on panel, unframed, 18 x 12 cm; a Victorian miniature study of a gentleman, pencil and watercolour, 9 cm diameter and various other miniature studies; Two Victorian studies of a cat and dog, both initialled F.F. and dated, oil on panel, 14 x 19 cm; a Victorian study of an oil on a gold-leaf background, unsigned, oil on panel, 38 x 67 cm; an early 19th century aquatint of a lady; and two circular botanical studies **£100-150**

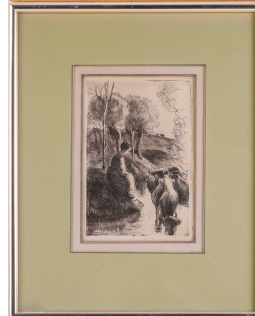


Fine Art, Antiques & Interiors, 24th Nov, 2022 09:30

- 132 Francis Seymour Haden (1818 - 1910), Kew side, signed within the plate, Harrington 82, plate 15cm x 14.5cm, together with Dundrum River, etching, 1863, signed & titled within the plate, Schneiderman 46B iv, plate 15cm x 14cm (Qty: 2)
The collection of Joan Elizabeth Mary Streeter. Kew side purchased Craddock & Barnard, August 31st. Dundrum River purchased from Elizabeth Harvey - Lee, June 1995. **£100-150**



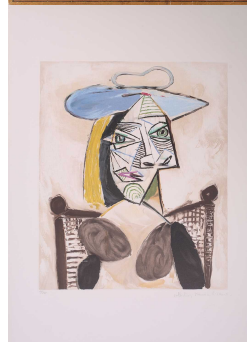
- 133 Camille Pissarro (1830 - 1903), Vachere au bord de l'eau, original etching, published in the Gazette de Beaux Arts 1904, image 19cm x 13cm
The collection of Joan Elizabeth Mary Streeter. **£100-150**



- 134 Follower of Henry Moore, Study for seated figure, pencil on paper, bearing a signature, 21 cm x 14.5 cm framed and glazed. **£100-150**



- 135 † After Pablo Picasso (1881 - 1973) 'Femme au Fauteuil Canne', Picasso Estate Collection limited edition colour lithograph, signed and numbered in pencil 'Collection Marina Picasso, 34/500', with blind stamps 'A Limited Edition After A Work By Pablo Picasso' & 'A Bull', printed verso in English & French 'Limited edition re-creation of an oil on canvas entitled "Femme au fauteuil Canne" by Pablo Picasso created on May 21, 1939, Approved by the Heirs of Pablo Picasso' and '©James E Brown D/B/AJ & J Master Art Works, 1982', on Arches paper, with certificate of authenticity, Image 50cm x 41.5cm, Overall 75.8cm x 55.7cm **£300-500**

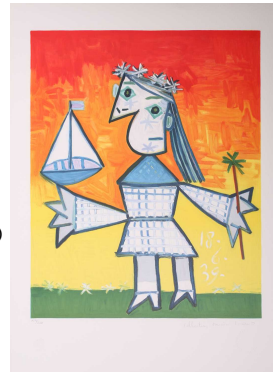


- 136 † After Pablo Picasso (1881 - 1973) 'Femme au Beret', Picasso Estate Collection limited edition colour lithograph, signed and numbered in pencil 'Collection Marina Picasso, 153/500', with blind stamps 'A Limited Edition After A Work By Pablo Picasso' & 'G', printed verso in English & French 'Limited edition re-creation of an oil on canvas entitled "Femme au Beret" by Pablo Picasso created in 1939, Approved by the Heirs of Pablo Picasso' and 'Artvestors', on Arches paper, with certificate of authenticity, Image approximately 55cm x 37.4cm, Overall 73.4cm x 52.7cm
A private estate. **£300-500**



Fine Art, Antiques & Interiors, 24th Nov, 2022 09:30

- 137 † After Pablo Picasso (1881 - 1973) 'Fillette Couronnee au Bateau', Picasso Estate Collection limited edition colour lithograph, signed and numbered in pencil 'Collection Marina Picasso, 474/500', with blind stamps 'A Limited Edition After A Work By Pablo Picasso' & a motif, printed verso in English & French 'Limited edition re-creation of an oil on canvas entitled "Fillette Couronnee au Bateau" by Pablo Picasso created on June 12, 1939, Approved by the Heirs of Pablo Picasso' and '© National Machine Systems, Inc, 1982', on Arches paper, with certificate of authenticity, Image approximately 57.5cm x 46cm, Overall 75cm x 54.3cm
A private estate. **£300-500**



- 138 † Raymond Teague Cowern R.A, R.E, (1913 - 1986) The Allotment (1934), Two Oaks (1933) & Vezelay, three original etchings, signed and dated in pencil in the margins, images 16.5cm x 17cm, 14cm x 18cm; and 14.5cm x 18.5cm (Qty: 3)
The collection of Joan Elizabeth Mary Streeter. Vezelay purchased Elizabeth Harvey- Lee, April 2010, the receipt notes Provenance - The Artists Family. **£70-100**



- 139 Chabulla, Study of the Virgin Mary, signed and dated 1887, oil on board, framed, 26 x 17 cm; After Francesco Bartolozzi, set of three boss designs depicting cherubs as three seasons, colour intaglio prints, 28 x 24 cm, three ephemera style prints of cherubs on painted white backgrounds, 30 x 25 cm, and five prints after Renaissance and later artists **£100-150**



- 140 Attributed to John Constable RA (1776-1837) British, 'A London Terrace with Trees and Figures,' pencil drawing on paper, depicting a large Georgian townhouse surrounded with tall oak trees, John Manning label to verso, the label reads that the work was authenticated by the Victoria and Albert Museum, 39 cm x 22 cm, framed and glazed.
The drawing was purchased from the John Manning Gallery, which was featured in the illustrated London News on the 25th of April 1959, the article talks in depth about the galleries eleventh watercolour and drawing exhibition. John Constable is primarily famous for his landscapes and depictions of the Suffolk countryside, although extremely popular today, he wasn't always so well received in the United Kingdom, though he enjoyed fame in France. **£1,500-2,000**

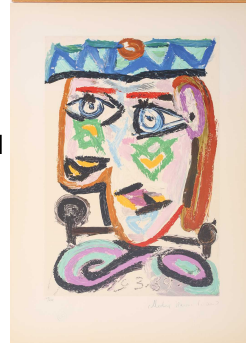


Fine Art, Antiques & Interiors, 24th Nov, 2022 09:30

- 141 Style of David Roberts, Figures on the road to Jerusalem, unsigned, watercolour, framed and glazed, 36.5 x 54.5 cm
£100-150



- 142 † After Pablo Picasso (1881 - 1973) 'Femme au Beret', Picasso Estate Collection limited edition colour lithograph, signed and numbered in pencil 'Collection Marina Picasso, 167/500', with blind stamps 'A Limited Edition After A Work By Pablo Picasso' & 'G', printed verso in English & French 'Limited edition re-creation of an oil on canvas entitled "Femme au Beret" by Pablo Picasso created in 1939, Approved by the Heirs of Pablo Picasso' and 'Artvestors', on Arches paper, with certificate of authenticity, Image approximately 55cm x 37.4cm, Overall 73.4cm x 52.7cm
A private estate. **£300-500**



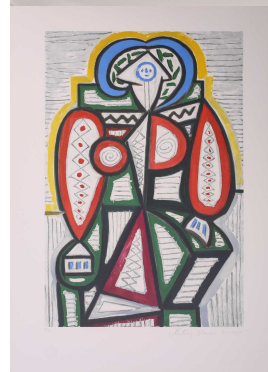
- 143 Archibald Kay (1860 - 1935), 'Black Donald's Linn, Pass of Lerry, Perthshire', signed oil on board framed, 43 x 37 cm
Gallery labels for 136 Buchanan Street, Glasgow and Nigel Stacy-Marks Ltd, Perth. **£300-500**



- 144 † After Pablo Picasso (1881 - 1973) 'Paysage de Dinard', Picasso Estate Collection limited edition colour lithograph, signed and numbered in pencil 'Collection Marina Picasso, 27/500', with blind stamps 'A Limited Edition After A Work By Pablo Picasso' & 'Dtamerin' printed verso in English & French 'Limited edition re-creation of an oil on canvas entitled "Paysage de Dinard" by Pablo Picasso created 1922, Approved by the heirs of Pablo Picasso' and '© Mrs. Marilyn K Nathan, 1982', on Arches paper, with certificate of authenticity, Image approximately 43cm x 52.3cm, Overall 55.4cm x 75cm
A private estate. **£300-500**



- 145 † After Pablo Picasso (1881 - 1973) 'Femme Assise', Picasso Estate Collection limited edition colour lithograph, signed and numbered in pencil 'Collection Marina Picasso, 6/500', with blind stamps 'A Limited Edition After A Work By Pablo Picasso' & 'Circular Grid', printed verso in English & French 'Limited edition re-creation of an oil on canvas entitled "Femme Assise" by Pablo Picasso created on February 19, 1947, Approved by the Heirs of Pablo Picasso' and '© Aaron Keiter, Betty J Hughes & Dale R Ruckman, 1980', on Arches paper, with certificate of authenticity, Image approximately 58.5cm x 39.5cm, Overall 74.5cm x 53.5cm
A private estate. **£300-500**



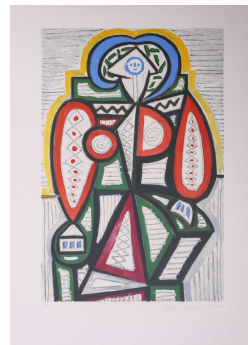
Buyers Premium 23% + VAT. Fully illustrated catalogue at dawsonsauctions.co.uk.

Fine Art, Antiques & Interiors, 24th Nov, 2022 09:30

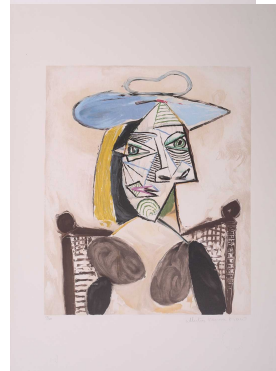
- 146 Attributed to Sergei Besedin (1901-1996) Ukrainian, two pencil sketches of figures on park benches, indistinctly signed and dated 64 and 65, framed and glazed, 19 x 13 cm **£100-150**



- 147 † After Pablo Picasso (1881 - 1973) 'Femme Assise', Picasso Estate Collection limited edition colour lithograph, signed and numbered in pencil 'Collection Marina Picasso, 26/500', with blind stamps 'A Limited Edition After A Work By Pablo Picasso' & 'Circular Grid', printed verso in English & French 'Limited edition re-creation of an oil on canvas entitled "Femme Assise" by Pablo Picasso created on February 19, 1947, Approved by the Heirs of Pablo Picasso' and '© Aaron Keiter, Betty J Hughes & Dale R Ruckman, 1980', on Arches paper, with certificate of authenticity, Image approximately 58.5cm x 39.5cm, Overall 74.5cm x 53.5cm **£300-500**



- 148 † After Pablo Picasso (1881 - 1973) 'Femme au Fauteuil Canne', Picasso Estate Collection limited edition colour lithograph, signed and numbered in pencil 'Collection Marina Picasso, 24/500', with blind stamps 'A Limited Edition After A Work By Pablo Picasso' & 'A Bull', printed verso in English & French 'Limited edition re-creation of an oil on canvas entitled "Femme au fauteuil Canne" by Pablo Picasso created on May 21, 1939, Approved by the Heirs of Pablo Picasso' and '©James E Brown D/B/AJ & J Master Art Works, 1982', on Arches paper, with certificate of authenticity, Image 50cm x 41.5cm, Overall 75.8cm x 55.7cm
A private estate. **£300-500**



- 149 A collection of thirty-six Victorian and Edwardian botanical lithographic prints, some stamped 'The Garden' and dated to the 1890s, the majority 29.5 x 22.5 cm **£100-150**



- 150 † After Pablo Picasso (1881 - 1973) 'Paysage de Dinard', Picasso Estate Collection limited edition colour lithograph, signed and numbered in pencil 'Collection Marina Picasso, 41/500', with blind stamps 'A Limited Edition After A Work By Pablo Picasso' & 'Dtamerin' printed verso in English & French 'Limited edition re-creation of an oil on canvas entitled "Paysage de Dinard" by Pablo Picasso created 1922, Approved by the heirs of Pablo Picasso' and '© Mrs. Marilyn K Nathan, 1982', on Arches paper, with certificate of authenticity, Image approximately 43cm x 52.3cm, Overall 55.4cm x 75cm
A private estate. **£300-500**



Buyers Premium 23% + VAT. Fully illustrated catalogue at dawsonsauctions.co.uk.

Fine Art, Antiques & Interiors, 24th Nov, 2022 09:30

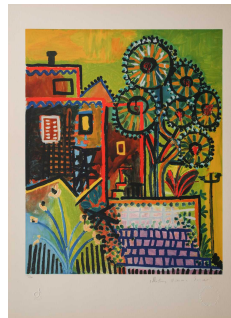
- 151 Felix Buhot (1847 - 1898), Une Matinee D'Hiver Au Quai de L'Hotel Dieu, signed within the plate, Bourcard 123, plate 34cm x 32cm
The collection of Joan Elizabeth Mary Streeter. Purchased from Craddock & Barnard, December 1982 **£90-110**



- 152 A collection of etchings and engravings comprising - Anthony Raine - Barker (1880 - 1963) The Barrel Organ, original drypoint, artists proof, signed in pencil in the margins, 13.2cm x 19cm; Robert Bartlett (20th century) Wind, wood engraving, 1930, signed & titled in pencil in the margins, image 13cm x 15.5cm; E Law (20th century) Dungeness, soft round etching, numbered 11/20, signed & titled in pencil in the margins, image 12cm x 12cm; David Young Cameron (1865 - 1945) Ailsa Craig from Arran (South), signed and titled within the plate, 1888, signed in pencil in the margins, plate 15cm x 24cm: An untitled etching of Atlas with a globe of flowers, indistinctly signed in pencil and numbered 97/100, plate 24.5cm x 20.5cm and Pierre Bonnard (1867 - 1947) Cat (Bouvier III), etching and illustration to La Vie de Sainte Monique, c1930, initialed within the plate, a later impression from the cancelled plate, 18cm x 12cm
(Qty: 6)
The collection of Joan Elizabeth Mary Streeter. **£70-120**



- 153 † After Pablo Picasso (1881 - 1973) 'Paysage', Picasso Estate Collection limited edition colour lithograph, signed and numbered in pencil 'Collection Marina Picasso, 155/500', with blind stamps 'A Limited Edition After A Work By Pablo Picasso' & 'Dtamerin', printed verso in English & French 'Limited edition re-creation of an oil on canvas entitled "Paysage" by Pablo Picasso created in 1937, Approved by the Heirs of Pablo Picasso' & '© Stirling Silliphant 1980', on Arches paper, with certificate of authenticity, 73.5cm x 54cm **£300-500**



- 154 † Elizabeth Violet Blackadder (1931-2021), 'Calico and Black Cat Beside Vase', signed and dedicated 'To Anne from Elizabeth May 1982' in pencil, AP lithograph, 58 cm x 79.5 cm framed and glazed.
Property of the Late Anne James - Anne James was a producer and director for the BBC specialising in Arts programming. She would later become an Executive Producer of Michael Palin's various travelogue series for the BBC. **£250-350**



Fine Art, Antiques & Interiors, 24th Nov, 2022 09:30

- 155 Giandomenico Beletti for FlyLine, CNP, Padova; a set of five Italian red and black steel 'Spaghetti' chairs, bearing silvered trade labels. 45 cm wide.
Purchased by the vendor's family from Harrod's in the 1970s
£400-600



- 156 A Louis XVI-style carved wood and gilt gesso circular pedestal gueridon with an inset marble top above a pierced frieze on turned and fluted supports united by an under tier with a split cane panel, 45 cm diameter x 71 cm overall height. Together with a French style two-tier Vernis Martin etagere decorated with a Watteauque figure in a landscape, 50 cm wide x 37 cm deep x 60 cm overall height.
(Qty: 2) **£150-200**



- 157 An Italianate painted rustic wall-mounted vitrine, 20th century, with an arched top and single-glazed door. 60 cm wide x 19 cm deep x 98 cm high. **£100-200**



- 158 A pair of Italianate turned and carved, painted standard lamps, early 20th, with floral decoration, each with a stretched silken fabric shade, and with segmental serpentine disk bases. 186 cm overall height. **£150-200**



- 159 A carved oak choir or pew end, with a roundel of flowerheads, over gothic arcading and oak leaf panel, 29 cm wide, 141 cm high **£200-300**



Fine Art, Antiques & Interiors, 24th Nov, 2022 09:30

- 160 A 19th-century oak prie-dieu with book compartment with a hinged cover and fitted a pair of panel doors above and inclined Bible stand. 54 cm overall width x 52 cm deep x 65 cm overall height.
Private estate **£100-150**



- 161 A 19th-century, folk art maritime pine trunk, painted with a clipper under sail flanked by the VR monogram and bearing the owners name 'A. Finch', dated 1860. Fitted a pair of iron folding bale handles. 86 cm wide x 52 cm deep x 42 cm high
Private estate **£300-500**



- 162 A large Victorian stripped gothic linen press with your rose appliques to the cornicing, the upper section with two-panel doors decorated with applied gothic tracery, the base with a further pair of decorative cupboard doors with matching decoration and supported by a moulded skirt foot. 118 cm wide x 66 cm deep x 225 overall height. **£200-300**



- 163 A craftsman-made square-topped faux black lacquer Regency style low centre table, 20th century, the top with gilt pseudo oriental scenes within labyrinthine borders and a triple reeded edge, the base fitted four parcel gilt inverted haunched sabre supports united by an under tier and terminating in gilt brass lion's paw castors, 118 cm x 118 cm x 52 cm high.
Private estate **£300-400**



- 164 A pair of Victorian architectural bow-fronted oak open corner shelves, each with a high carved faux "bull nose" tiled high canopy above two shelves flanked by vine pilasters, above a shaped apron and drop finial, 65 cm wide x 165 cm overall height. **£200-300**



Fine Art, Antiques & Interiors, 24th Nov, 2022 09:30

- 165 A composite suite of black lacquered furniture decorated with faux Chinese scenes, some possibly by Mapple and co early 20th century, to include a two-door cabinet on cabriole-legged stand, oval topped spider legged table two nests of intersliding tables, low needlework table, a pair of side chairs, circular and square occasional tables and three standard lamps. Together with a Chinese black lacquered side table. **£500-600**



- 166 An Art Deco oak hall mirror with a single drawer box base. 38 cm wide x 169 cm overall height. Private estate **£80-120**



- 167 A craftsman-made Louis XV style "French Blue" lacquer bombe commode in the manner of Adrien Delorme, 20th century, fitted two drawers painted with raised lacquer oriental scenes with applied gilt metal mounts throughout. 130 cm wide x 66 cm deep x 91 cm overall height. **£600-800**



- 168 Charon Freres, of Paris; a Napoleon III ebonized and red tortoiseshell Boulle worked ten drawer pedestal "Wellington" type chest with three quarter gallery top with fitted twin register bars to the extended canted corners and gilt metal mounts throughout, supported by a conforming plinth base. Bearing the Makers name stamped to the leading edge of the top lock. 50 cm overall width x 40 cm overall depth x 124 cm overall height

Charon Freres is recorded as working together between 1855-1860 they exhibited items of "Boulle" bedroom furniture at the Grand Exhibition of 1855. After 1860 the brothers dissolved their partnership but continued to make furniture individually. **£300-500**



- 169 A near pair of Mid-Victorian mahogany bookcases, the moulded protruding cornices over pairs of glazed doors enclosing adjustable shelves, above pairs of panelled cupboard doors enclosing shelves and drawers (the drawers of varying depth), on plinth bases, adapted from another bookcase, 144 and 148.5 cm wide, 251 cm high, 44 cm deep. (Qty: 2) **£600-800**



Fine Art, Antiques & Interiors, 24th Nov, 2022 09:30

- 170 A Victorian birdseye maple partners kneehole library, writing table with tooled hide inset top fitted four short sweet chestnut lined drawers and a long frieze drawer to either side, one side containing an inclining writing surface with matching leather surface. Supported by turned and bulbous legs terminating in swivel socket castors. 144 cm x 107 cm x 80 cm overall height, 59 cm knee height. **£300-500**



- 171 A pair of Louis XVI-style carved wood and "Lacquer a Mecca" fauteuils with moulded frames and acanthus detail arms, upholstered with close nailed stuff over velvet. On turned and fluted supports. 60 cm overall width x 62 cm overall depth x 98 cm overall height, 50 cm height of the seat. **£200-300**



- 172 An oriental-style cherry wood effect what-not with square section supports above a two-door cupboard base with a stylised double happiness motif to the doors, supported by sledge feet. 66 cm wide x 46 cm deep x 143 cm overall height. **£100-200**



- 173 A French Louis XV-style two-drawer bombe petit commode, 20th century, with shaped rouge marble top above tulipwood trellis parquetry fitted with gilt metal mounts, on slender cabriole supports. 54 cm wide x 32 cm deep x 72 cm overall height. **£200-300**



- 174 A French Louis XVI-style "tumbling-cube" parquetry three-drawer commode with shaped marble top commode, 20th century, with gilt metal mounts and canted corners, on slender cabriole, supports. 82 cm wide x 38 cm deep x 86 cm overall height. Together with a similar two-drawer marble-topped commode, 83 cm wide x 43 cm deep 86 cm overall height. (Qty: 2) **£300-400**



Fine Art, Antiques & Interiors, 24th Nov, 2022 09:30

- 175 An early George III mahogany toilette mirror, with pierced and shaped cresting above a cross-grain moulded frame, the base fitted three short moulded drawers and one long frieze drawer on a shaped base. Bearing a James Reeve antique dealer (Birmingham and Currently Warwick) label verso. 47.5 cm wide x 26 cm deep x 80 cm overall height. Together with a cast stone recumbent lion door stop. 29 cm long. **£120-150**



- 176 A folk-art carved pine rocking/push-along horse, late 19th /early 20th century, with twisted iron strap handles and shaped runners. 96 cm overall length x 70 cm overall height **£100-150**



- 177 French, Napoleon III marble-topped, ebonised and red boule serpentine single-door credenza, with neo-classical decoration and gilt metal mounts throughout, on a conforming plinth base. 112 cm wide x 44 cm deep x 119 cm overall height. **£500-800**



- 178 A pair of early 20th-century wingback fireside chairs with arched backs upholstered in original brown rexine stuff over upholstery, supported by cabriole fore legs. 67 cm overall width x 80 cm overall depth x 98 cm overall height, 43 cm height to the seats. Private estate **£200-300**



- 179 An Anglo-Indonesian centre table, the circular top inlaid with floral border over a moulded frieze on a large foliate carved and beaded stem on a quadrupartite line inlaid base with brass caps, each with twin ball feet, 156 cm diameter, **£300-500**



Fine Art, Antiques & Interiors, 24th Nov, 2022 09:30

- 180 A 19th-century style Spanish walnut side table with moulded white marble top over a fielded panelled base with distinctively shaped stile end supports bolstered by typical wrought iron stretchers, 127 cm overall width x 54 cm deep x 76 cm overall height **£300-400**



- 181 Indonesian hardwood shelf with two square scroll carved drawers, 196 cm wide, 23 cm deep and a Kashmir brass and copper inlaid panel with a mirror to the reverse, later brass handles, 71 x 45.5 cm (Qty: 2) **£150-200**



- 182 A Victorian mahogany countertop shop display cabinet with a curved front fitted a mirror door to the reverse of the cabinet. 91 cm x 42 cm deep x 20 cm high. **£100-150**



- 183 A 19th-century carved wood and gilt gesso broken arch topped pier glass with bevelled mirror plate flanked by a pair of Corinthian pilasters. 57 cm wide x 91 cm overall height. **£150-250**



- 184 A Louis XVI style carved wood and gilt gesso child's Bergere armchair with ivory stuff over upholstery and carved and moulded frame, supported on tapering turned and fluted legs. 56 cm wide x 61 cm deep x 86 cm overall height, 44 cm height of seat. **£100-150**



Fine Art, Antiques & Interiors, 24th Nov, 2022 09:30

- 185 A 17th-century style dome topped hide two-door media chest, 20th century, with decorative close nailed and external strap hinge details. 73 cm overall width x 41 cm deep x 71 cm overall height. **£100-200**



- 186 Two Charles Eames vintage ICF (licensed) aluminium group armchairs with dark green and charcoal grey hopsack upholstery on a revolving five-spoked base with black plastic disc feet, 56 cm overall width x 55 cm overall depth x 84 cm overall height, 47 cm height to the seats. **£200-300**



- 187 A Large Victorian oak square section box Ottoman, of flared concave form with stuff over jade green fabric upholstery, on compressed bun feet 68 cm x 68 cm x 42 cm high. Together with a similar smaller ditto with gross point needleworked top over a heavy gadrooned base with compressed bun feet, 44 cm x 44 cm x 45 cm high. **£150-200**



- 188 After Gerrit Rietveld (Dutch 1888-1964) for Cassina, No 635 the red and blue lounge chair, painted in distinctive contrasting colours. 60 cm wide x 89 cm overall height x 82 cm long **£150-200**



- 189 A craftsman-made mahogany segmentally extending circular dining table, 20th century, on a four-pillar and inverted sabre base terminating in box toe brass castors, the table is accompanied by its corresponding shaped leaf inserts and struts contained in a "leaf keeper" box. 215 cm extended, 161 cm reduced diameter x 74.5 cm overall height. **£300-400**



Fine Art, Antiques & Interiors, 24th Nov, 2022 09:30

- 190 A Chinese solid Hongmu serpentine fronted kneehole dressing table, early 20th century, with concealed central inclining mirror flanked by a pair of hinged compartments to the top with removable trays, above a single frieze drawer and two further short drawers, on turned supports united by an under tier carved and pierced with stylised rampaging dragons. 81 cm wide x 49 cm deep x 82.5 cm overall height, 61.5 cm knee room.
Private estate **£300-400**



- 191 A. Blain & Son of Liverpool (1835-1883); a late Victorian figured mahogany circular library drum table, the top with a tooled crimson leather insert above four real and four faux frieze drawers, supported on a spindle galleried base with carved sledge feet. Stamped to the top edge of each drawer, 28 cm overall diameter x 76 cm overall height, 60 cm knee height.
For historical notes on A. Blain & Son of Liverpool please follow this link
Credit: BIFMO **£400-700**



- 192 A French Louis XVI rosewood banded kingwood breakfront commode, 20th century, with a shaped grey marble top over two long drawers, supported by angular cabriole supports with gilt metal mounts. 107 cm wide x 53 cm deep x 84 overall height.
Private estate **£300-400**



- 193 A French Louis XVI oval mahogany table bouillotte, early 20th century, with white marble top above a single frieze drawer, supported by fluted turned tapering legs, 54 cm x 40 cm x 74 cm overall height. Together with a Napoleon III ebonised and marquetry three-tier etagere, and a mahogany and yew wood tray topped table, early 20th century and later.
(Qty: 3) **£150-200**



- 194 A set of four white painted bamboo "Cockpen" style conservatory side chairs with green slub-woven fabric, tie-on squabs, together with a set of four white painted bamboo horseshoe-backed tub chairs.
Private estate **£200-300**



Fine Art, Antiques & Interiors, 24th Nov, 2022 09:30

- 195 A William IV rosewood and gilt brass pole screen with petit point work needlework panel of colourful parrots with gilt crown finial and the base with wrythen stem and moulded grain painted and parcel gilt disc base. 40 cm wide x 137 cm overall height. **£100-200**



- 196 A large William IV mahogany fold-over tea table with radiused corners, the frieze with raised moulded panel over a concave rectangular sub base with haunched inverted sabre legs with brass swivel castors. 120 cm wide x 61 cm deep x 71 cm overall height. **£150-200**



- 197 In the manner of James Moore; an early 18th century carved wood and gilt gesso side table with acanthus frieze and large "Dublin Shell" apron on simple cabriole legs terminating in pad feet. Fitted a later replacement marble top. 77 cm wide x 48 cm deep x 73 cm overall height (the measurements are of the table alone not including its later marble top) **£2,000-3,000**



- 198 A large late Victorian velvet-covered Ottoman with an upholstered top and a decorative applied trade label for Kent & Co of High Holborn, 138 cm long x 56 cm deep x 49 cm overall height. Private estate **£150-200**



- 199 A Dutch marquetry inlaid mahogany pedestal chest of six short drawers, early 19th century, flanked by a pair of simple columns, decorated throughout with bands of scrolls flowers and flowering censors, on a simple plinth foot. 102 cm wide x 50 cm deep x 138 cm overall height. **£300-500**



Fine Art, Antiques & Interiors, 24th Nov, 2022 09:30

- 200 A matched pair of large Italianate green-painted two-door painted armadio (clothes cupboards), 20th century, with canted serpentine sides decorated throughout with baskets of fruit and flowers, supported by shaped box plinths. 114 cm wide x 62 cm deep x 197 cm overall height. Private estate **£200-300**



- 201 A decorative rustic-painted open bookcase, 20th century, with turned pilasters above a pair of short frieze drawers, on a shaped bracket plinth base. 99 cm wide x 44 cm deep x 170 cm overall height. **£150-200**



- 202 A decorative painted chest on stand, 20th century, decorated with cut blooms and faux stringing on a crackle glazed ivory ground, the upper section with two short over three long drawers and the base four short drawers supported by shaped cabriole legs united by an undulating apron. 98 cm wide x 50 cm deep x 145 cm overall height **£200-300**



- 203 A Queen Anne style rouge lacquered and Chinoiserie decorated scroll framed pier glass, the first quarter of the 20th century, with bolection moulded surround. 67 cm wide x 127 cm overall height. **£200-300**



- 204 A large and impressive Victorian golden oak overmantle mirror, with a cresting of putti musicians the frame profusely carved with leafy scrolls and further putti musicians, 185 cm wide x 215 cm overall height. **£400-500**



Fine Art, Antiques & Interiors, 24th Nov, 2022 09:30

- 205 A 19th-century Florentine carved wood and gilt gesso oval wall mirror with rustic fruiting vine surround. 55 cm overall width x 57 cm overall height. **£200-300**



- 206 A Queen Anne-style walnut toilette mirror with an arched mirror plate over a shaped base fitted with four short drawers and supported by turned onion feet. 36 cm overall width x 17 cm overall depth x 70 cm overall height. Together with a 1920s circular wall mirror, the collection frame is moulded with summer fruits. 46 cm diameter over all. The Queen Anne style toilet mirror purchased Bonhams & Brooks, lot 88, 10th January 2001. **£150-200**



- 207 An early Victorian Scottish, black lacquer and Chinoiserie overmantle mirror with carved and parcel gilt corner details and with inlaid mother of pearl, painted in faux Oriental scenes and floral sprays, bearing a trade label for Ciceri & Co frame makers, decorators gilders, carvers, (Edinburgh 1830-1884), 152 cm overall width x 171 cm overall height. For notes relating to Ciceri & Co Credit: BIFMO **£800-1,200**



- 208 A 19th-century brass oval girandole with floral embossed detail fitted with three candle sconces. 41 cm wide x 59 cm high. **£100-150**



- 209 An early 18th-century lacquer a Mecca-style, Chinoiserie overmantle mirror, first quarter of the 20th century, with shaped cresting decorated with raised pseudo oriental figures above a three-section mirror plate, 102 cm wide x 68 cm overall height. Private estate **£100-150**



Fine Art, Antiques & Interiors, 24th Nov, 2022 09:30

- 210 A crimson ground Central (?) Turkish prayer rug with barbed mihrab and broad borders, 85 cm x 140 cm, together with a probably Multan pink ground "Turkoman" mat, 89 cm x 80 cm.
(Qty: 2) **£100-150**



- 211 A muted red ground North West Persian Karadja runner with a typical geometric device on a field of stylised motifs within flower head borders, 2.4 mtrs x 90 cm, together with a blue ground Turkish Ayvaik rug with cruciform lozenges and tile border. 1.2 mtrs x 2 mtrs
(Qty: 2)
Private Estate **£200-300**



- 212 An old Turkish red ground Taspina mat with a distinctive central motif within floral borders, 1.2 mtrs x 70 cm, together with an old Turkish prayer mat with golden ground and single mihrab and one other small Turkish mat.
(Qty: 3)
Private estate. **£100-150**



- 213 An antique Turkish "Country House" runner with six rectangular panels containing hooked diamond lozenges within a broad flower head border. 1.1 mtrs x 3.4 mtrs.
Private estate **£200-300**



- 214 An old red-ground Turkish Konya(?) rug with two cruciform medallions within a broad flowering shrub border, 1.2 mtrs x 1.9 mtrs
Private estate **£100-150**



Fine Art, Antiques & Interiors, 24th Nov, 2022 09:30

- 215 A large probably Indian flat woven Dhurrie-type carpet with iron red and sage green flowering shrubs within a sage green floral border. 300 cm x 304 cm **£100-150**



- 216 A small ivory ground silk Soumak rug with panels of stylized animals within a star border. 1mtr x 1.3 mtrs **£100-150**



- 217 A red ground probably Turkish, village rug with all over pattern of doubled diamond motif within a broad repetitive cross border, 1.2 mtrs x 1.9 mtrs. Together with antique Turkoman (?) kelim remnant, 1.1 mtrs x 2.3 mtrs and an unusual Turkish (?) pink and pistachio green rug with Islimi decoration but woven without borders, 1 mtr x 2.3 mtrs. (Qty: 3) **£150-200**



- 218 A crimson ground (Western(?) Turkish rug with a colourful geometric device filled field within, repetitive "C" shaped borders, 1.2 mtrs x 2.1 mtrs **£150-200**



- 219 A pale red ground Lori Pambak design soumak carpet with a distinctive central motif within multiple borders. 251 cm x 191 cm **£150-250**



Fine Art, Antiques & Interiors, 24th Nov, 2022 09:30

- 220 An ivory ground antique Western Turkish (Istanbul?) rug with a central polylobate boss and hanging lanterns within large leafy borders. 1.2 mtrs x 1.8 mtrs
Private estate **£200-300**



- 221 An old red-ground Turkish Ushak rug with central stepped medallion within broad borders, 1.3 mtrs x 1.8 mtrs **£150-200**



- 222 An old Turkish Tulu (hairy) carpet with a multicoloured central lattice field within a tiled border. 1.8 mtrs x 2.2 mtrs. **£100-150**



- 223 An antique possibly Northwest Persian long "Country House" carpet with central lozenges on a pole on a black/brown field of animals and stylized motifs within an ivory flowerhead border, 2.8 mtrs x 1.5 mtrs **£200-300**



- 224 An antique blue/black ground Turkish Kula rug the central lozenge filled with stylized shrubs within broad borders. 1.4 mtrs x 1.7 mtrs **£150-200**



Fine Art, Antiques & Interiors, 24th Nov, 2022 09:30

- 225 An antique red ground probably Qasqai runner with a diamond tiled field within a similar border with barber pole guards, 1.3 mtrs x 2.6 mtrs **£200-300**



- 226 An old dark blue ground Caucasian rug (possibly Kuba?) with large stylized "St. Andrew's" cross motifs within an unusual ram's horn broad border, 1.3 mtrs x 1.9 mtrs
Private estate **£200-300**



- 227 A pair of large and impressive Chinese carved white marble Dogs of Fo, 20th century, each with open mouths and one paw resting on a sacred pearl, mounted on a draped stepped plinth base, the marble weathered, 35 cm overall width, 54 cm overall depth, 85 cm overall height **£500-700**



- 228 A Chinese Hongmu scroll/altar table. Qing, with pierced frieze and panelled top on reduced carved supports, 180 cm overall length x 43 cm deep x 54 cm overall height. Together with an early 20th-century Kang table with carved and ebonised decoration, 97 cm overall length x 44 cm depth x 31 cm overall height
(Qty: 2)
Private estate **£200-300**



- 229 A Chinese porcelain ewer, Persian inspired, of pear form with looping handle, painted with plantain leaves, scrolling tendrils and flowers, with panels of pomegranates and berries, apocryphal six character Xuande mark, of recent manufacture, 31cm high **£300-400**

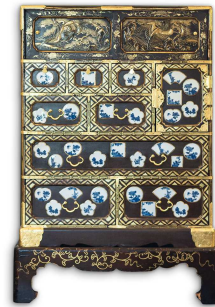


Fine Art, Antiques & Interiors, 24th Nov, 2022 09:30

- 230 A Nepalese style bronze figure of Aparmita, seated in dhyana mudra and supporting a vase with flower, on a double lotus throne, of recent manufacture, 30cm **£150-250**



- 231 A Japanese muted brown lacquer Tansu, Meiji, early 20th century, with engraved brass corners and fittings, the cabinet with eight drawers in sizes and a pair of sliding doors and a hinged cupboard door all decorated with maki-e Laquer mons and eagles in low relief and inset with blue and white Hirado porcelain panel, supported on a base with shaped bracket supports. 70 cm wide x 41 cm deep x 109 cm overall height. **£500-800**



- 232 An established reconstituted stone Japanese-style six-tier garden pagoda, 20th century, with lotus bud finial, 46 cm overall width x 300 cm overall height **£200-300**



- 233 A Chinese carved lapis rhyton, the bowl with a band of leiwen before a dragons head, a chilong climbing at the rear, the stone predominantly blue but with grey patches and streaks throughout, of recent manufacture, 10cm long **£300-400**



- 234 A Chinese porcelain chrysanthemum shaped dish, the turquoise glazed body with moulded dragon & Fenghuang decoration amongst clouds, the fluted sides moulded as petals, apocryphal Qianlong seal mark, of recent manufacture, 23cm **£150-250**



Fine Art, Antiques & Interiors, 24th Nov, 2022 09:30

- 235 A pair of Japanese ginbari cloisonne vases, late Meiji/ early Taisho, each decorated with a writhing dragon against a dark blue enamel ground, 18.5cm **£150-250**



- 236 A pair of French Louis XV-style fauteuils and dressing stools, 29th century, with moulded frames and stuff over upholstery all on slender cabriole supports, 72 cm overall with x 79 cm overall depth x 97 cm overall height, 42 cm height to the seat of the chairs.
(Qty: 4) **£200-300**



- 237 A Chinese porcelain famille verte dished plate, painted with two sages and attendant beside a pine tree on a rocky outcrop, a dwelling surrounded by spuming waves and rocks beneath Manchurian crane, the underside painted with floral sprigs, apocryphal six character Kangxi mark, of recent manufacture, 21.9cm dia **£100-150**



- 238 A pair of Japanese bronze two branch candelabra, late Meiji/Taisho period, modelled as a Manchurian crane and colt standing upon a lily pad with tortoise, the candelabra detachable, approx 46cm **£150-250**



- 239 A Chinese bronze figure of Guanyin seated over a mythical beast, on a stepped base with lotus petals, traces of gilding and red pigment throughout, of recent manufacture, 28.5 cm high. **£180-220**



Fine Art, Antiques & Interiors, 24th Nov, 2022 09:30

- 240 A good Kutani vase by Taniguchi, late Meiji, circa 1900, the neck with alternating brocaded and scrolling tendril panels, above fan shape vignettes finely painted with landscapes, a hawk, a group of gilt outlined Chidori, a Manchurian crane, wisteria and peony, all against a millefiore ground, above a band of paulownia leaves, the footrim with a band of key motifs beneath chrysanthemum, signed Kutani Tsukuru Taniguchi and a further gilt double gourd mark, 30.5cm **£200-300**



- 241 A Chinese Longquan celadon bowl, Ming dynasty, the interior with a faint lotus flower to the centre, the exterior with lotus flowers and tendrils, on a circular foot, 15.8cm dia, 7.5cm high **£200-300**



- 242 A Japanese silk embroidered panel, depicting deer, birds and a monkey around a tree, in a mother-of-pearl inlaid floral design frame, 103 x 34 cm overall **£150-200**



- 243 A Chinese malachite figure group, 20th century, carved as two females amongst flowers, one standing the other seated, 19cm overall; a malachite figure of a kneeling female with a basket of flowers, 9.3cm overall and a malachite equestrian figure of a warrior, 13cm overall, all on wood stands with inlaid wire decoration **£150-250**



- 244 A Chinese bronze figure of a recumbent water buffalo, with traces of gilding and red pigment throughout, four character seal mark to the underside, of recent manufacture, 19 cm high. **£120-180**



Fine Art, Antiques & Interiors, 24th Nov, 2022 09:30

- 245 A small collection of Chinese Mingqi, Tang dynasty, comprising a horse painted with black mane and eyes and with green glazed saddle and reins, 25cm high, two cows, 16cm & 21cm long, two recumbent boars, 11cm, a cockerel, 7.5cm and a sleeping dog, 9cm **£100-200**



- 246 A Chinese porcelain wucai style pen box and cover, painted with red and green dragons facing a flaming pearl amongst clouds above waves, against a cash ground with corner floral vignettes, apocryphal six character Jiajing mark, of recent manufacture, 33cm long **£400-600**



- 247 A Chinese porcelain dragon bowl, the interior and exterior painted with dragons amongst clouds, the exterior above a band of waves, apocryphal six character Guangxu mark, of recent manufacture, 18.4cm dia **£180-220**



- 248 A small collection of Japanese style bronzed copper insect okimonos, comprising three beetles and a scorpion together with a lobster and an elephant, most with pseudo seal mark, of recent manufacture, 3cm - 10cm long **£200-300**



- 249 A Chinese pale green jade carved figure group of three dogs of fo with bats, pearls and fungus, 20th century, on a pierced hardwood base. 10 cm overall width x 14 cm overall height. **£100-150**



Fine Art, Antiques & Interiors, 24th Nov, 2022 09:30

- 250 A Chinese porcelain steep sided bowl, the interior based on the 'Chicken Cup' with a boy with chickens amongst rockwork and peony, the exterior painted with vines of double gourds, apocryphal Yongzheng seal mark, of recent manufacture, 22.3cm dia **£150-200**



- 251 A collection of Chinese cloisonne, 20th century, comprising a pair of steep sided bowls, decorated with lotus flowers and pods and a blue ground inset with wavy lines, 11.7cm dia, on wood bases; a pair of inverted baluster vases, decorated with butterflies and flowers against a variegated light brown ground, 11.5cm; and a petal shaped bowl, decorated with birds, peony and rockwork against a turquoise ground, 15.5cm, on wood base
(Qty: 5) **£100-200**



- 252 A Chinese porcelain shallow sided dish, painted with an iron red dragon writhing amongst clouds and chasing a flaming pearl, apocryphal six character Kangxi mark, of recent manufacture, 18.2cm dia **£100-150**



- 253 A pair of Chinese porcelain dragon tea bowls, the exterior painted with two opposing dragons facing a flaming pearl, amongst fiery clouds against a blue ground, between a leiwen band and waves, apocryphal Tongzhi mark, of recent manufacture, 8.5cm dia **£120-150**



- 254 A large Thai bronze figure of Vishnu, standing on one leg, each of the four arms with attributes of a chapa, conch shell, wheel and trishula, on a wood base, 179cm overall, 158.5cm excluding base **£300-500**



Fine Art, Antiques & Interiors, 24th Nov, 2022 09:30

- 255 A Chinese carved pale green and russet jade fruiting cherry tree, 20th century, the trunk issuing from an oval censor mounted on a section of the natural cherry root above a white metal inlaid pierced hardwood stand, 10 cm wide x 19 cm high **£150-200**



- 256 A garniture of Chinese ornamental Bonsai trees, Republic period of slightly later, with polished agate petals and yellow glass buds, in engraved brass planters with hardstone panels, 37.5cm & 19.5cm **£150-250**



- 257 A pair of Chinese paintings on silk, 20th century, depicting a group of ladies in a dwelling over a lake with numerous lily pads and flowers, the other with two females in a boat before an extensive backdrop of buildings on a mountain side, 24cm x 21cm **£100-150**



- 258 A large Chinese porcelain sang de boeuf bitong, of cylindrical form, the glaze consistent throughout, apocryphal Qianlong zhuanhu seal mark, of recent manufacture, 19cm high, 17.5cm diameter. **£200-300**



- 259 A Chinese bronze censer, modelled as an obese temple lion, with scrolling mane and tail, the body with repeating motif, faint traces of gilding and red pigment throughout, seal mark to the underside, of recent manufacture, 16.5 cm high. **£150-250**



Fine Art, Antiques & Interiors, 24th Nov, 2022 09:30

- 260 A Japanese bronze censer, Meiji period, modelled as a stork looking towards the heavens, its beak open to reveal a tongue, the plumed back removing to an open body, standing upon a lily pad, 54.8cm **£150-250**



- 261 A good pair of Japanese bronze usubata, Meiji period, the petal shape top cast in low relief with swimming carp and one with lily pads, each with an apron of manji, the slender supports with hawks upon a branch over a writhing dragon base, the underside of the support with signature, 28cm high, 23.5cm diameter.
(Qty: 2) **£600-800**



- 262 A Chinese carved and pierced variegated spinach jade study of a lidded urn and pair of writhing dragons, 20th century, with a fenghuang and peony above a base of crashing waves, on an oval pierced hardwood stand, 13 cm overall width x 19 cm overall height; together with a pink jade remnant of a bare tree with roosting birds, (AF) **£150-200**



- 263 A Chinese bronze censer, modelled as a seated temple lion, the head hinged at the front, with scrolling mane, legs and tail fur, of recent manufacture, 17cm **£150-250**



- 264 A Chinese Ming style gilt bronze figure of Guanyin, seated in vitarka mudra, of recent manufacture, 28.5 cm high. **£250-350**



Fine Art, Antiques & Interiors, 24th Nov, 2022 09:30

- 265 A Chinese Tang style equestrian Minqi, modelled as a horse and rider, the rider with his hands close to his chest, 41.3cm high, approx 35cm wide **£100-150**



- 266 A Chinese Tang Dynasty style obese horse, with dressed mane and tail, traces of gilding and red pigment, of recent manufacture, 16.5cm long, 16.5cm high **£150-250**



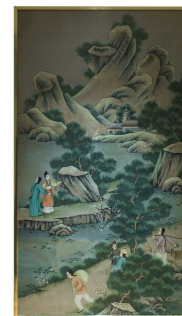
- 267 Chinese school, 19th century, half length portrait of Wu Bingjian (Howqua/Houqua), Canton, circa 1840/50, seated holding beads in his left hand, wearing a plush purple, fur lined robe with civil rank badge of a Crane, his lower blue garment with a gold dragon, within a hand painted European style border, the quality of which would lead one to assign an attribution it to the Tingqua studio, watercolour, 22cm x 18.5cm. The estate of a private lady. Wu Bingjian was known to Westerners as Howqua/Houqua. He was one of the leading Chinese merchants engaged in overseas trade. **£400-600**



- 268 Three large Chinese blue & white dished chargers, Qing, Kangxi period, each painted with blossoming peonies amongst tendrils and leaves, with brown oxide rims, the underside painted with sparse branches, two painted with a lingzhi to the centre within double concentric rings, 39cm & 39.5cm dia. The larger of the two has some small rim chips on the underside and a 5cm fine hairline crack. The second charger has some small rim chips on the underside and two fine hairline cracks, each measuring 6cm. The unmarked charger with two fine hairline cracks measuring 6.5cm & 8.5cm. **£400-500**



- 269 20th century Chinese school, Tradesmen and figures in a lakeside landscape, gouache on paper, unsigned, 165 x 92 cm framed and glazed. **£300-400**



Fine Art, Antiques & Interiors, 24th Nov, 2022 09:30

- 270 A pair of Chinese porcelain good luck, prosperity & longevity bowls, the exterior painted with five bats Wufu framing a sho symbol and interspersed with bats holding cash bound by ribbons, all against a yellow ground, apocryphal Tongzhi seal mark, of recent manufacture, 11.5cm **£180-220**



- 271 A Chinese porcelain Gu form vase, painted with lotus flowers and leaves, with two bands of leiwen, against a yellow ground, apocryphal Qianlong zhuan shu seal mark, of recent manufacture, 22cm high **£150-250**



- 272 A pair of Chinese blue & white Fenghuang dishes, the underside with a further two fenghuang amongst clouds, apocryphal six character Guangxu mark, of recent manufacture, 16.8cm **£200-300**



- 273 A Chinese crackleware vase, late Qing, c1900, painted with birds and butterflies amongst rocks and peony, between bronzed bands, apocryphal incised mark, 28.5cm; a Chinese blue & white charger, early 20th century, painted with pomegranates surrounded by peony and leafy tendrils, the underside with bamboo shoots and apocryphal six character Kangxi mark, 34.5cm; a near pair of 19th century Canton enamel spill vases, one with pierced decoration, 10cm & 10.5cm; a small crackleware vase (reduced in height), 14.3cm; and a Japanese porcelain blue & white dish, with shallow sides, painted with a bird and tree peony, 27cm dia **£150-250**



- 274 A Chinese porcelain famille verte dragon dish, painted throughout with five dragons chasing flaming pearls amongst clouds, apocryphal six character Yongzheng mark, of recent manufacture, 21cm dia **£150-200**



Fine Art, Antiques & Interiors, 24th Nov, 2022 09:30

- 275 A pair of Chinese Kangxi style vases and covers, 20th century, with gilt shou, lotus flower and scroll decoration against a blue ground, between bands of ruyi heads and leiwen, 42cm **£100-150**



- 276 A Burmese bronze figure of Buddha, 20th century, standing in Abhaya mudra, on a square base, 126cm high. **£200-300**



- 277 A pair of Chinese pith paper paintings, early 20th century, painted with a scholar and pupils in an interior setting, the other with a fisherman and female by a lake with mountainous background, 18cm x 28.5cm **£150-250**



- 278 A Chinese carved sage green jade boulder carving, 20th century, with flying crane and mobbing birds, the interior carved with phoenix, birds roosting in flowering peony above wading water buffalo, mounted on a pierced hardwood stand. 13 cm wide x 18.5 cm overall height **£200-300**



- 279 A set of six hand coloured original Japanese woodblock prints of palanquins, taken from The Book of Royal Palanquins Volume Two, edited by Imaizumi Teisuke and published by Yoshikawa Hanshichi, Tokyo, 1900, comprising palanquins Phoenix, Shuroge, Kae, Ajiro, Onion Flower & Uri, each with red seal, 34.5cm x 47cm **£200-300**



Fine Art, Antiques & Interiors, 24th Nov, 2022 09:30

- 280 A Chinese porcelain sages vase, the compressed body with lion mask and ring handles, painted with sages in black robes heightened with gilding, standing amongst peaches, a poem verso, apocryphal six character Xianfeng mark, of recent manufacture, **£250-350**



- 281 A Chinese porcelain Hookah pipe bowl, of Persian influence, painted in blue & white with leaves and tendrils, of recent manufacture, 20.5cm high **£300-500**



- 282 A Sino Tibetan bronze Buddha clay seal mould, the central figure over a dharma wheel and flanked by stupas, within a border of lankha script, with rectangular handle, of recent manufacture, 11.8cm x 10.8cm **£100-150**



- 283 A near pair of satsuma vases, Meiji period, each with a slightly flared rim above a long slender neck, painted with bands of butterflies, figures and flowers between bands of beads and karakusa, the compressed body painted with either seated figures on a speckled gilt ground or millefluer heightened with gilding, above a band of gilt and coloured lappets, unsigned, 15.7cm & 15.8cm **£200-300**



- 284 A Japanese black lacquer travelling calligraphy table (Bandai), Meiji period early 20th century, with an inclined top decorated with a gilt Tokugawa mon above a box base with a single frieze drawer. **£200-300**



Fine Art, Antiques & Interiors, 24th Nov, 2022 09:30

- 285 A Chinese Beijing glass bowl, Qing, with everted rim above steep sides, the exterior decorated in relief with horses within a mountainous landscape, beneath a crescent moon and clouds, with rockwork, pine and willow trees, applied label 'Dr and Mrs Collection', 16cm dia, 7cm high; and a Breijing green glass bowl, with wavy rim, decorated in relief with lotus flowers and leaves, remnants of a label to the underside, 16.5cm dia, 7.5cm high **£150-250**



- 286 20th century Japanese, a pair of wading egrets among Lotus flowers, signed, gouache on board, 75 x 99 cm, and Mi Chou, Whooping Cranes among rushes, pastel and ink, 101 cm x 75 cm
(Qty: 2) **£150-200**



- 287 A Chinese bronze censer, modelled as a Qilin (Kylin) in recumbent pose, its snarling head looking over its shoulder, a pierced lid in the centre of its back, traces of red pigment and gilding, of recent manufacture, 25 cm high. **£180-220**



- 288 A Chinese white/ lavender jade censer of flattened urn form, 20th century, with captive ring handles on four leaf-shaped feet, on a carved and shaped hardwood base. 13 cm overall width x 18 cm overall height. **£150-200**



- 289 A Persian polished nickel Hookah pipe, 20th century, in four sections., painted throughout with figures and flowers some in relief, with panels of birds and buildings, 109.5cm **£100-150**



Fine Art, Antiques & Interiors, 24th Nov, 2022 09:30

- 290 A Sitzendorf porcelain wall mirror, with twin candle sconces and floral encrusted border, surmounted by putti, 36 cm high x 36 cm wide. **£200-300**



- 291 A Copeland (?) "Three Graces" white porcelain figural fruit comport with blu Celeste accents and fitted with a pierced basket supported by three classical muse standing back to back with joined hands on an acanthus moulded tripartite base. 27 cm diameter x 52 cm overall height, together with a Continental, probably Paris porcelain circular pedestal fruit comport with an everted rim on a square sub base. , 21 cm diameter x 22 cm high. Private estate **£150-200**



- 292 A Martin Brothers stoneware gourd vase by Edwin & Walter Martin, dated 1901, shouldered, of lobed cylindrical form, green and brown glaze, incised marks to base and dated 4-1901, 13 cm high. **£300-500**



- 293 A suite of Rosenthal Versace dinner service items, comprising eight dinner plates, four shallow bowls, four bread plates, three demitasse and saucers, coffee pot, milk jug, sauce boat, a covered tureen and three graduated oval dishes, each with gilt finish on an ivory ground, together with three sets of four tall stem wine glasses, a champagne flute and a set of four octagonal glasses. **£1,500-2,500**



- 294 A Royal Worcester set of nine tea cups and saucers and a further two saucers, with gilt and beaded borders, each with hand-painted study of birds, unsigned, saucers with late 19th century mark, 13.5 diameter, cups unmarked 7.5 cm high **£200-300**



Fine Art, Antiques & Interiors, 24th Nov, 2022 09:30

- 295 A Martin Brothers miniature stoneware gourd vase by Edwin & Walter Martin, dated 1903, shouldered, of lobed square form, incised marks to base and dated 6-1903, 7.8 cm high. **£300-500**



- 296 A set of twelve Waterford Lismore design drinking glasses, 14.5 cm high, another similar set of twelve, 14 cm high and seven German green drinking glasses with faceted bowls, 11 cm high (Qty: 31) **£200-300**



- 297 A cameo glass vase designed by Ryszard Ramski, of baluster form with flared rim, lily decoration, 13 cm high. **£80-120**



- 298 René Lalique (French 1860-1945), an opalescent 'Rampillon' pattern vase, designed 1927, engraved 'R. Lalique France, No:991', of flared form with moulded lozenge-shaped protrusions against a foliate ground, 12.7 cm high, 10.5 cm diameter at the top. **£500-700**



- 299 Saint Louis, France, a crystal glass vase of baluster form with flared rim, overlaid in green on a circular foot, 24 cm high. **£200-300**



Fine Art, Antiques & Interiors, 24th Nov, 2022 09:30

- 300 Lalique: a set of six 'Flammes' pattern glass tumblers, 10.5 cm high, in original fitted box. **£300-400**



- 301 Lalique: a set of twelve 'Roxanne' pattern champagne flutes, 22 cm high, contained in two original branded boxes. **£500-700**



- 302 Igor Carl Faberge: a suite of 'Snow Dove' glassware, comprising two boxed candlesticks, a decanter with stopper, nine wine glasses, twelve wine goblets (in boxes), twelve champagne flutes, twelve cordial glasses and one tall stem glass, each with frosted dove stems, brochure included. **£500-700**



- 303 Lalique: ten pieces of contemporary glass, comprising two vases (the tallest 17.6 cm), five scent bottles and three paperweights, all modelled as animals. (Qty: 10) **£80-120**



- 304 After Auguste Rodin, 'The Kiss', bronzed composition, Alva Studios and other marks, 25 cm high, another of 'The Thinker', bronzed composition by Austin Productions Inc., 23 cm high, two other Austin Production bronzed composition sculptures and another similar of a crouching nude, 22 cm long (Qty: 5) **£200-300**



Fine Art, Antiques & Interiors, 24th Nov, 2022 09:30

- 305 After Ugo Cipriani (Italian, 1887-1960) an Art Deco style bronzed and ivorine composition figure of a lady, 20th-century, wearing in medieval gown and cloche hat, on an onyx base. 36 cm overall width at the base x 22 cm deep at the base x 48 cm overall height.
Purchased Bonhams, Chelsea, 31st October 2000, lot 277
£150-250



- 306 † Fink, 'Punk Pig', signed, painted fibreglass model of a pig with applied hair, 61 cm high, 97 cm long, with original display stand.
One from a series of pigs produced for 'Pigs on Parade', a charity event and auction held for The Jack and Jill Children's Foundation in Dublin 2015. Each pig was individually decorated and painted by leading artists. **£300-500**



- 307 † Brian Hegarty, 'Piggy Pop', fibreglass model of a pig painted and applied with re-printed record labels, 61 cm high, 97 cm long, with original display stand.
One from a series of pigs produced for 'Pigs on Parade', a charity event and auction held for The Jack and Jill Children's Foundation in Dublin 2015. Each pig was individually decorated and painted by leading artists. **£300-500**



- 308 † Rob Crane, 'This Little Piggy Went to the Circus', unsigned, painted fibreglass model of a pig, 61 cm high, 97 cm long, with original display stand.
One from a series of pigs produced for 'Pigs on Parade', a charity event and auction held for The Jack and Jill Children's Foundation in Dublin 2015. Each pig was individually decorated and painted by leading artists. **£300-500**



- 309 † Pamela Ryzewski (20th century), abstract sculpture in two sections, polished metal, the largest section 25 cm high x 33 cm wide.
(Qty: 2) **£150-250**



Fine Art, Antiques & Interiors, 24th Nov, 2022 09:30

- 310 A pair of seated almost life-size bronze melanistic panthers, 20th century, with dark patinated surfaces. 65 cm long x 75 cm overall height **£200-300**



- 311 † Francois Cacheux (1923-2011), nude figure of a ballerina, indistinctly signed, bronze, Valsuani foundry mark, 17 cm high, 34 cm long **£600-800**



- 312 † Thorn, 'Pig-Cassi, in the Garden of Eden', signed, painted fibreglass model of a pig, 61 cm high, 97 cm long, with original display stand. One from a series of pigs produced for 'Pigs on Parade', a charity event and auction held for The Jack and Jill Children's Foundation in Dublin 2015. Each pig was individually decorated and painted by leading artists. **£300-500**



- 313 L.S., Bronze head of a gentleman, initialled and dated 82, 3/3, Burleighfield Foundry Mark, on a black marble base, 36 cm high **£200-400**



- 314 After Priscilla Hann, a bronze figure of a pointer dog, one leg raised, on a curved timber base, signed P. Hann, 19 cm high, 24 cm long **£200-300**



Fine Art, Antiques & Interiors, 24th Nov, 2022 09:30

- 315 An Italian early 20th century carved white and variegated alabaster bust study of a gentleman of happy mien with sweptback hair and aquiline nose, on a shaped base. displayed on a turned and fluted pedestal with a square base. 56 cm the bust, 156 cm overall combined height **£150-200**



- 316 An art deco bronzed and parcel gilt plaster mother & child figural group, circa 1940s, the child playfully trying to disrobe her, mounted on a shaped wooden base. Purchased Bonhams, Chelsea, 31st October 2000, lot 10. **£80-120**



- 317 Of historical London interest; An important documentary Port of London Authority bronze roundel dated 1914, possibly formerly applied to the port of London authority 1914 building that still stands at the edge of the city of London, near the historical Smithfield market. The large circular bronze plaque cast in heavy relief with the arms of the authority (granted in 1908) bearing the date 1914. 92 cm diameter x 5 cm thick. Purchased many years ago by our client's late mother, when the modernisation of that sector of London was re-developed. **£5,000-8,000**



- 318 An Art Deco patinated spelter and ivorine figural clock garniture, a young woman modelled seated on an ochre and black marble base, the clock with geometric contrasting marble decoration, accompanied by a pair of flared bronzed vases with marble bases, 59 cm long the clock. Purchased Bonhams, Chelsea, 31st October 2000, lot 271. **£250-350**



- 319 † Barbara Tribe (1913-2000) Australian / British, 'Julie', bronze study of a female torso, 48 cm high x 23 cm wide. Private collection. Artist label affixed to underside. **£1,500-2,000**



Fine Art, Antiques & Interiors, 24th Nov, 2022 09:30

- 320 Late 20th century, bronze study of a face, on a black plaster base, the base signed Hazel in pen, 31 cm high **£200-300**



- 321 After Helmut Diller (1911 - 1984), a bronze figure of two pelicans, on a rectangular marble base. signed Helmut Diller, Muenchen, Strassacker foundry mark, 27 cm high, 25 cm wide, 19 cm deep **£800-1,200**



- 322 † After Henry Moore (1898-1986), 'Reclining Figure: Holes 1975', plaster cast maquette sculpture, base marked with affixed catalogue label inscribed 'Reclining Figure: Holes 1975/Archive 0074229', 24 cm wide x 18 cm high. (Similar plaster maquette with archive no. label to base sold 888 auctions, Ontario, Canada 16/01/20 Lot 147) **£400-600**



- 323 † Noirin Dodd, 'Bacon and Eggs', signed, painted fibreglass model of a pig, 61 cm high, 97 cm long, with original display stand. One from a series of pigs produced for 'Pigs on Parade', a charity event and auction held for The Jack and Jill Children's Foundation in Dublin 2015. Each pig was individually decorated and painted by leading artists. **£300-500**



- 324 In the manner of Antonio Canova; a carved white marble figure of a nude female reclining on a draped chaise lounge. on a contrasting marble sub-base. 42 cm overall length x 15 cm overall width x 24 cm overall height. **£100-150**



Fine Art, Antiques & Interiors, 24th Nov, 2022 09:30

- 325 In the manner of Giuseppe Bessi; a carved white and variegated alabaster bust study of Beatrice mounted on a simple rectangular socle entitled: "Beatrice", 34 cm wide x 17 cm deep x 34 cm overall height. **£150-200**



- 326 † Deridre McCarthy, 'Lunchtime', signed painted fibreglass model of a pig with applied flowers and raised cow figures, 61 cm high, 97 cm long, with original display stand. One from a series of pigs produced for 'Pigs on Parade', a charity event and auction held for The Jack and Jill Children's Foundation in Dublin 2015. Each pig was individually decorated and painted by leading artists. **£300-500**



- 327 A large and extensive Victorian taxidermists museum display of exotic birds in the manner of John Gould, containing: Orange Minivet, Campo Troupial, Blue Dacnis, European Bee-Eaters, Egrett, Andean Cock of the Rock, White Throated Kingfisher, Tufted Coquette, Ruby Throated Hummingbirds, Trogon, Band Tailed Manakin, Purple Throated Carib, Turquoise Tangara, Lesser Violetear and many others, all set in a naturalistic setting, housed in a double-sided mahogany case, flanked by decorative fluted columns. Supported by hunched sabre legs with swivel castors. 105 cm overall width x 46 cm overall depth x 169 cm overall height. A private estate **£1,500-2,500**



- 328 A folk-art painted iron plate weather vane, probably late 17th century, shaped as a flat section figure of a Triton with a horn raised to its lips, mounted on a shaped oak block, 89 cm long x 61 cm overall height. **£200-300**



- 329 A Victorian pierced, moulded and gilt oak wall bracket with serpentine shelf and scroll support 31 cm wide x 25 cm deep x 38 cm high, together with a pair of 19th century carved wood and gilt gesso chimney breast appliques in the form of strips of ribbon bound fruiting oak, 80 cm long x 3cm wide, together with another winged cherub's head bracket an Italian giltwood open scroll wall bracket and a flying gilt putti with chain suspension. (Qty: 6) **£150-200**



Buyers Premium 23% + VAT. Fully illustrated catalogue at dawsonsauctions.co.uk.

Fine Art, Antiques & Interiors, 24th Nov, 2022 09:30

- 330 A probably Vienna circular porcelain panel painted with The Madonna Della Sedia, within a carved wood and gilt gesso Florentine frame, 26 cm wide (The porcelain panel 15 cm diameter) **£200-300**



- 331 A Puerto Rican folk-art two-door carved and painted wood holy shrine to St. Antonio, 19th/20th century, the arched doors open to a charmingly naive carved figure painted in polychromic colours, 11.5 cm wide x 18.5 cm x 6 cm deep. Together with other devotional items including a large plater figure of a praying infant. **£150-200**



- 332 A French toleware wall applique of a herald Angel, 19th century, with gilt nimbus and banner with indistinct inscription painted in colours, 71 cm overall width x 69 cm high. Private estate **£100-200**



- 333 A 19th-century elliptical stained glass panel depicting the goddess Demetre, within a leaded surround, 28 cm x 28 cm. Together with a series of three Victorian stained glass roundels each painted with garden birds, 15.5 cm diameter, and other stained and leaded glass panels. (Qty: 9) **£150-200**



- 334 A 19th-century painted fabric panel of Putti fruit and a lamb in the manner of Peter Paul Rubens in a maple veneered frame. 59.5 cm x 71 cm overall. Together with a 19th-century needlework picture of a peacock executed in various knotwork on a linen ground, 63 cm x 56 cm overall, and a beadwork panel depicting a floral wreath, 31 x 37 cm overall **£120-150**



Fine Art, Antiques & Interiors, 24th Nov, 2022 09:30

- 335 A small collection of decorative items including a pair of trompe l'oeil folding wall brackets painted with bluetits, an Italianate carved gilt and painted wood table lamp base, together with carved and gilt cherub wall appliques, twin branch wall sconce, ebonite novelty owl clock and other items. Private Estate **£100-150**



- 336 A collection of Victorian and later Berlin beadwork and gross point decorative cushions including armorial, floral and other decorative cushions of varying sizes and shapes. **£150-200**



- 337 A large pair of French Charles X/ Louis Philippe bronze candelabra each with five sconces and a central crane finial the arms draped with swags of chains above reeded tapering columns terminating in three bold lion's paw monopodia interspersed with stylized anthemion device. 27 cm overall width x 74 cm overall height. **£400-600**



- 338 A victorian oak wall-mounted "Country House Hotel" postbox with scroll bracket and hinged cover marked "Post Leaves at Six PM", 22 cm wide x 13 cm deep x 21 cm overall height. together with an Edwardian oak perpetual calendar with a pyramidal top and moulded foot, 25 cm wide x 8 cm deep, and a pair of Victorian oak lion's mask carved brackets. **£150-200**

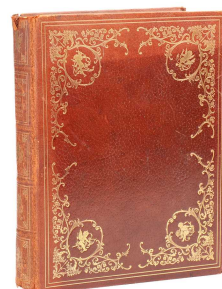


- 339 A Victorian lady's snap-top crocodile skin dressing case with bottle green watered silk interior with silver topped dressing appointments, Birmingham 1886, a pair of later silver backed clothes brushes, a lady's chatelain purse, and other items. **£150-200**



Fine Art, Antiques & Interiors, 24th Nov, 2022 09:30

- 340 Arthur Quiller-Couch, 'The Sleeping Beauty and Other Fairy Tales', London, Hodder & Stoughton, illustrated by Edmund Dulac, no. '0000' from a limited Edition de Luxe of 1000 copies, signed by Dulac in pencil. **£100-150**



- 341 A large oriental style canted square section faience "Arrow" vase table lamp painted with fruiting vines and insects in colours, fitted a stretched silken shade. 101 cm overall height. **£150-200**



- 342 A pair of Neo-Classical style gilt composition table lamps, 20th century, with beaded columns and rectangular leaf-capped bases, each lamp fitted decorative pheasant feather banded fabric shades. 44 cm diameter x 79 cm overall height. **£150-200**



- 343 A white glazed figural 'Cherub' table lamp, 20th century in the form of three cherubic boys one holding a large bunch of grapes, mounted on a turned giltwood base. with stretched silken fabric shade. 39 cm diameter x 69 cm overall height **£100-200**



- 344 A large and impressive pair of gilt bronze altar-type candle stand lamps With urn sconces and fluted columns over triform bases moulded with a mandorla and a bust in relief of the Holy Mother, raised on scroll feet. 126 cm high overall. **£200-400**



Fine Art, Antiques & Interiors, 24th Nov, 2022 09:30

- 345 Two medal groups: Operational Service Medal, with Afghanistan bar, awarded to RGR P.G. Barrett R. Irish 30103357 and a NATO medal with ISAF bar; Campaign Service Medal with Northern Ireland bar, awarded to 24697018 RFMN S.B. Wellings 1RGJ. and a Gulf War 1990 - 91 Medal with 16 Jan to 28 Feb 1991 bar awarded to 24697018 L/CPL S.B. Wellings 1RGJ. **£100-150**



- 346 A Victorian West Riding Constabulary sword/hanger with ray skin grip fullered blade and leather and iron scabbard bearing the legend WRC. 75 cm length in total. **£150-250**



- 347 An extensive collection of Lehmann LGB "G" Gauge garden railway including 2040 6-6 "Krokodil pantograph engine, 2018D 1-6-0 Mogul steam train and tender, 2080s 2-6-2, steam, tank engine (boxed), 3080,3081,3061, passenger carriages (boxed), 4040E Esso tanker, 4041, ore hopper wagon (boxed) Union Pacific 1872-4 box cart. Together with boxed track sections and power controller and other accessories, and a boxed Hornby Railways G104, 3" Gauge Stephenson's Rocket coach (No locomotive) **£300-400**



- 348 An early 20th century carved and painted wooden, piebald rocking horse with a leather harness and horsehair tail and mane. On a varnished trestle base. 135 cm wide x 103 cm 114 cm overall height, Private estate **£200-300**



- 349 A large two-seat naive toy folk-art wooden ride-on, pull-along steam train and tender with hanging bells, "T" bar handles and painted detail, both with metal wheels with rubber tyres. 93 cm long the length of the engine excluding the handle. **£150-200**



Fine Art, Antiques & Interiors, 24th Nov, 2022 09:30

- 350 An unusually large 1920s/30s Norah Wellings South Island "DuDu" type black doll, dressed in a grass skirt, 76 cm long. Together with an early 20th century probably French dolls wickerwork and wrought iron sleigh, a miniature "Queen" cast iron dolls house cooking range and accessories. **£100-150**



- 351 An unusual folk-art turned and carved wood "Bed-Post" doll, possibly American 19th/20th century, with a slightly protruding tongue and remaining pigment painted detail, fitted thread-bound rope arms. 36 cm long. **£400-600**



- 352 A Victorian-style ebonized wood and iron perambulator with a rail handle shaped body and iron-bound cart-type wheels and carriage suspension, 125 cm overall length x 55 cm wide x 88 cm overall height. **£200-300**



- 353 A Victorian brass 2" diameter library telescope with a celestial lens and a terrestrial lens. Marked on the end of the barrel Chadburn, 71 Lord St. Liverpool., 96 cm long, on an adjustable brass stand with folding scroll legs, 44.5 cm high
Charles Henry Chadburn worked as an optical, mathematical and philosophical instrument maker from 1845 to 1861. He exhibited at The Great Exhibition in 1851 and gained a Royal Appointment to Albert, Prince Consort of Queen Victoria as Optician and Instrument Maker. He traded from 71 Lord St and is associated with Chadburn Bros. with works in Liverpool and Sheffield. Later to become Chadburn and Son, William Chadburn was to develop a marine telegraphic system for communication on board ship - the brass Engine Order Telegraph. **£500-800**



Fine Art, Antiques & Interiors, 24th Nov, 2022 09:30

- 354 A Vintage Scientific Clock Mfg, 30hr wall timepiece, 20th century, the white painted Arabic dial marked "Scientific" with moulded oak surround, 41 cm diameter dial. **£100-150**



- 355 A Seth Thomas 30hr drop dial wall clock with mahogany case decorated with painted Roman dial cartouch and gothic moulding. 42 cm wide x 56 cm overall height. **£80-100**



- 356 C. (Constantin) Detouche of Paris, a late 19th century 8-day porcelain cased rococo mantle clock, the engraved gilt brass Roman dial fitted with blued "Moon" hands. 19 cm wide x 13 cm overall depth x 33 cm overall height. Together with an early 20th-century gilt brass desk maritime-themed desk compendium clock, thermometer, compass in the form of an anchor, ship's wheel and quoit, mounted on an oak stepped, and two continental wall clocks including "Postman's Alarm" type wall clock and a Swiss folk-art wall clock with broken arch floral painted dial. (Qty: 4) **£150-200**



- 357 Nicholson of Dumfries; a 19th century 8-day oak cased longcase clock with a painted broken arch dial fitted a calendar rocker at 6-0'clock and swan neck hood the case with mahogany crossbanding and a long door. 50 cm wide x 25 cm deep x 211 cm overall height. **£200-300**



- 358 Stanley, Chancery Lane, London; an 8-day single fusee mahogany cased English dial timepiece with painted Roman dial, 30 cm diameter dial. Together with another generic 8-day single fusee English dial timepiece with a mahogany case, 30 cm diameter dial. (Qty: 2) **£150-200**



Fine Art, Antiques & Interiors, 24th Nov, 2022 09:30

- 359 A late 17th /early 18th-century style 8-day hoop and spike lantern clock, early 20th century, with anchor escapement, the dial centre marked (apocryphally) for Thomas Moore of Ipswich and fitted a single fretted hand, 17 cm overall width x 19 cm overall depth x 37 cm overall height. Together with an incomplete gothic 8-day single fusee skeleton timepiece (for repair) 18 cm overall width x 8 cm overall depth x 31 cm overall height.
(Qty: 2) **£150-200**



- 360 A late Victorian brass skeleton timepiece under a glass dome with ebonized base and white bisque figure, 37 cm wide x 39 cm overall height. **£200-300**



- 361 J Belin of Padelles; A French 19th century 8-day comtoise wall clock with white enamel slightly convex Roman dial and elaborately embossed facia and pendulum. 23 cm dial diameter **£150-200**



- 362 Dent, Royal Exchange 8 -day twin fusee bracket clock Number 47019, late 19th/ early 20th century, the mahogany architectural case with fretted side grilles and a silvered one-piece Roman dial and the movement chiming the hours on a coil gong. **£200-300**



- 363 A French Empire gilt brass 8-day mantle clock, early/mid 19th century, the body of architectural form with applied musical trophies and triumphal wreaths and fitted an engraved silvered dial above a cast frieze of musical puttos, supported by decorative toupee feet. The clock is below a blown oval section dome and on a later mahogany base. 37 cm wide x 12 cm deep x 38 cm overall height (just the clock) **£200-300**



Fine Art, Antiques & Interiors, 24th Nov, 2022 09:30

- 364 An early 20th-century French 8-day corniche carriage clock, with a simple Roman one-piece dial chiming the hours on a coil gong. 8.5 cm wide x 7.5 cm deep x 16.5 cm overall height. Together with a smaller corniche-cased 8-day carriage timepiece. , 8 cm wide x 6.5 cm deep x 14 cm overall height. (Qty: 2) **£100-150**



- 365 Japy Freres; A Louis XVI style eight-day ormolu and white marble figural mantle clock, late 19th century, with white enamel Roman dial, mounted with a bird's nest atop a classical column, observed by a lady in a flowing gown on an architectural base with guilloche inset frieze on decorative toupee feet, 47 cm overall length x 47 cm overall height. Private estate **£300-500**



- 366 The Wildlife Society Of Southern Africa, a '50th Anniversary Medallion Set', by the Africana Commemorative Mint, cased limited edition collection of 24 gold plated sterling silver medallions produced to commemorate the 50th anniversary of the Southern Africa Wildlife Society. The edition limited to 10,000 sets. Each medallion approx 45mm diam and approx 36grms. With original certificate and booklet, and a loose additional medallion. **£350-450**



- 367 A cased set of six sterling silver medallions, each depicting The Abduction of Europa, each medallion encapsulated in presentation case, with certificates and booklet, issued EMC; a 2013 Silver Kangaroo Road Sign one dollar, one ounce .999 silver, Perth Mint, with certificate; a silver proof crown commemorating the 800th anniversary of the Magna Carter, issued CPM; a 2014 sterling silver crown commemorating World War I, issued London Mint; and a 2014 UK quarter ounce silver coin struck from the silver recovered from the SS Gairsoppa, issued by the Royal Mint, all coins encapsulated and in presentation cases **£100-150**



- 368 Two Royal Mint 2010 UK silver proof sets, together with a 2011 silver proof set, each in a fitted presentation box. (Qty: 3) **£250-350**



Fine Art, Antiques & Interiors, 24th Nov, 2022 09:30

- 369 Richard II / Edward III Half Noble, AD 1377-99., Obv: King standing in ship holding shield and sword within partially legible legend, Rev: Royal cross within tressure, E in centre. 25mm dia, 3.6g **£500-750**



- 370 Queen Victoria, a 24ct Diamond Jubilee commemorative medallion, with soldered suspension loop. 13.4g **£250-300**



- 371 A George VI 1937 specimen coin set, to include crown, half crown and others (15 coins in all), contained in a gilt-tooled morocco leather Royal Mint presentation case. **£200-300**



- 372 Four commemorative coin sets, comprising The First & Last Strike of the Guinea, No; 139/495; the New Portrait Specimen Set, 2015, comprising nine coins, CPM certificate; the 5oz Silver Bullion Bar, .999 fine silver, No:229/995, with Westminster certificate of authenticity; and The 2014 Date Stamp UK Specimen set of twelve slabbed coins, all coins encapsulated and within presentation cases **£100-150**



- 373 A Geo III guinea, 1782 and a half guinea, 1810, both with soldered suspension loops, 13g gross **£250-350**



Fine Art, Antiques & Interiors, 24th Nov, 2022 09:30

- 374 A Royal Mint silver proof London 2012 Olympic 50p collection, in the original fitted case and outer slipcase. **£200-300**



- 375 A Spirit by Steinberger electric guitar, serial no. 20062350961, gloss red finish, 76 cm, together with a Yamaha APX T2 acoustic guitar, each in a soft carry case. (Qty: 2) **£200-300**



- 376 A Jackson EMG electric guitar, in black finish with mother of pearl inlaid fretboard, serial no. 9601770, c.100 cm, together with a Washburn Nuno Bettencourt model electric guitar, serial no. 4020496, c. 98 cm and a further electric guitar, unnamed, 97.5 cm. (Qty: 3) **£300-500**



- 377 A 1990s Gibson Explorer electric guitar, in fitted plush-lined carry case, made in USA, serial no. 91936705, black and cream finish, c.115 cm. **£800-1,200**



- 378 A large group of Ed Colarik hand-painted cast lead Japanese feudal Samurai soldiers including mounted troops, pike men, musketeers, swordsmen, watchtower, colonnade, and Tokugawa banner bearers, to be sold in their mahogany glass-fronted display cabinet (not-original to the set) Private estate **£300-400**



Fine Art, Antiques & Interiors, 24th Nov, 2022 09:30

- 379 An early 20th-century Belgian rustic wooden dog cart, with iron hooped wheels and a T bar handle. Together with a Victorian bookbinder's "Plough" trimmer, numerous beechwood moulding planes, beechwood plough plane, "coffin" block planes and other items. **£200-300**



- 380 An original 1977 Star Wars piece of artwork, created for Letraset, who 20th Century Fox officially licensed to produce stationery merchandise in the UK. The artwork was created for Letraset by Hunt and Broadhurst Ltd of Limited (Oxford), for a range of stationery items, and this example is for the C-3PO Exercise book, 22 cm x 33.5 cm in a folio proof cover. Also included in this lot are further similar items, also produced by Hunt and Broadhurst Ltd, comprising Sooty, (for Matthew Corbett), 'The Shoe People' (for James Driscoll) 'Teddy's Writing Book' (for Woolworths), and assorted flowers artwork, produced for WH Smith notebooks, most in folders. (Qty: Qty) **£200-300**



- 381 An early 20th-century Unis of France tabletop stereoscopic view containing views of the Boer war, 26 cm wide x 27 cm deep x 45 cm high. Together with six boxes of glass magic lantern slides including, shipping, topographical, early American and other, subjects, all housed in fibre or military-style brass bound cases. **£300-400**



- 382 A vintage London Transport bus enamel bonnet plate, 'RTL 399', 50.5 cm wide, together with another similar Green Line example, 'ST 1136' and two bus numberplates. (Qty: 4) **£150-250**



- 383 A good collection of vintage iron, enamel and other metalware vehicle badges and plates, to include a Birmingham Omnibus 'BMMO' radiator plate (33 cm wide), assorted bus maker's plates, (eg. Seddon, AEC Diesel, a 1935 Leyland Motors example, a 'Bristol' hub cap, Eastern Coachwork Ltd, Bedford, Perkins Diesel, Duple Group, Reading & Co), and assorted smaller bus badges. **£300-500**



Buyers Premium 23% + VAT. Fully illustrated catalogue at dawsonsauctions.co.uk.

Fine Art, Antiques & Interiors, 24th Nov, 2022 09:30

- 384 Of Theatrical or Re-enactment interest, A late 19th-century black silk top hat by F.W Allen of Forrest Hill (London) Together with another simply marked Liverpool and with a vented hole to the crown (Police?), a Probably Eton rowing "Victory" straw boater (missing badge) Together with a collection of Victorian black japanned "Bull's Eye" Police type lanterns including T. Joyce, Dolan & Co, Lucas and others and an LNER Welch Patent railway lantern. wrought iron Scold's Bridal, a set of wrought iron bar-type leg fetters and a set of iron manacles and an iron restraint belt. **£200-300**



- 385 Star Wars: a collection of original soundtrack vinyl albums, comprising 'Star Wars' (20th Century Records, BTD 541), 'The Empire Strikes Back' (RSO Records), 'Return of the Jedi' (RSO Records), 'The Empire Strikes Back - The Adventures of Luke Skywalker' (RSO Deluxe 2479 257), 'Rebel Mission to Ord Mantel' (Buena Vista Records 2104) and 'The Story of Star Wars' (Buena Vista Records 62101, with colour booklet), together with: 'Walt Disney's Fantasia, Leopold Stokowski with the Philadelphia Orchestra', (triple album), 'The Hitch-Hiker's Guide to the Galaxy' (Original Records LTD, ORA 42), 'Raider of the Lost Ark: The Movie on Record' (Columbia 37696) and '2001 A Space Odyssey' (MGM Records, MGM CS 8078 Stereo). **£150-250**



- 386 A large antique Sawfish ((*Pristis pristis*) rostrum 125 cm long x 39 cm wide, together with a Roland Ward (The Jungle) Brown Bear (*Ursus Arktos*) skin rug with paws, claws and an un-blocked head. with a rexine-lined interior (AF) Private collection **£200-300**



- 387 The Beatles: a good collection of early issue vinyl albums and singles, comprising: 'Hottest Hits' (EMI PMCS 306, Denmark), 'Beatles For Sale' (Mono, Parlophone PMC 1240, Gatefold sleeve), 'Help!' (Mono, Parlophone PMC 1255), 'A Hard Day's Night' (Mono, Parlophone PMC 1230), 'Rubber Soul' (Mono, EMI PMC 1267), 'Revolver' (Mono, EMI PMC 7009), 'Magical Mystery Tour' (Capitol 2835, Gatefold), and the singles: 'Help! / I'm Down' (Parlophone R5305), 'Magical Mystery Tour' (Parlophone / EMI, gatefold) and 'Beatles For Sale No. 2' EP (Parlophone GEP 8938). **£250-350**



- 388 The Rolling Stones: Four early issue vinyl albums, comprising 'Around and Around' (Decca, 158.012 Standard), 'Out of Our Heads' (Mono, Decca LK 4733), 'The Rolling Stones' (Mono, Decca LK 4605, Matrix 2A / 3A), and 'The Rolling Stones No. 2' (Mono, Decca LK 4661, Matrix 1A/2A), together with three EP/Singles: 'The Rolling Stones' (Mono, Decca DFE 8560), 'Five by Five' (Decca, Mono, DFE 8590) and 'Got Live if You Want It!' (Mono, Decca DFE 8620). (Qty: 7) **£150-250**



Buyers Premium 23% + VAT. Fully illustrated catalogue at dawsonsauctions.co.uk.

Fine Art, Antiques & Interiors, 24th Nov, 2022 09:30

- 389 Of railway interest, a G Polkey Limited Birmingham GWR signal lamp/lantern, single clear lens, black painted body, together with another similar (unmarked), each 31 cm high.
(Qty: 2) **£100-150**



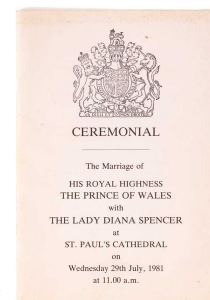
- 390 A large Victorian walnut and brass bound writing slope, with presentation plaque to the top, gilt tooled leather to the interior, 50 cm x 25 cm x 19 cm, together with a second writing slope, similar period.
(Qty: 2) **£200-250**



- 391 A small fragment of the pall (coffin cover) of the late Queen Victoria, attached to a note detailing its provenance, a small embroidered silk King George V ribbon and a small card moment of the coronation, a tooled Morocco leather case Daguerreotype of an elderly lady, 14 cm x 11.5 cm, and other Edward VII/ George V Royal souvenir and a contemporary Lord Baden Powell early scouting lapel badge, leather-bound Army officers notebook and other items.
Private estate **£100-200**



- 392 Of British Royal interest: an official order of service from the wedding of Lady Diana Spencer and His Royal Highness, the then Prince of Wales. **£100-150**



- 393 Andy Warhol (1928-1987), a Two Dollar bill, 1976, hand signed by the artist in black marker, Serial number: F21569984A, with four affixed US postal stamps with post office stamp, dated 4th July, (the stamps depicting the Trumbull painting "The Declaration of Independence", 'Andy Warhol' stamp verso., displayed in a perspex frame, the frame 15 cm x 20.2 cm. **£500-700**



Fine Art, Antiques & Interiors, 24th Nov, 2022 09:30

- 394 Of Napoleonic interest, an early 19th carved coquilla nut Bugbear snuff box, the hinged lid carved in relief with a figure of napoleon standing beside a pedestal surmounted with an eagle, the white metal thumbpiece stamped with a cross and 'Aux Hellenes', the body with a grotesque mask with coloured glass eyes with metal backing and a white metal mouth showing rows of teeth and a tongue, a less grotesque mask on the opposing end, the sides well carved with flowers and berries, resting on a carved bed of scrolling leaves framing a leafy panel, an ink inscribed label to the interior reads ' Given by Napoleon to Marshall Ney and given by Marshall Ney to a lady who gave it to my mother. C. Herbert Copllis'. 7.8cm x 4cm



A Bedfordshire estate. **£800-1,200**

- 395 An early 19th century Napoleonic prisoner of war carved bone table box, with fret carved panels and engraved decoration, the caddy top hinged lid depicting birds and hares, containing a pen tray, the whole on bracket feet, 30 cm wide, 25 cm deep, 15 cm high. **£200-300**



- 396 A very large 19th-century cast iron and brass coffee grinder with a classical urn bean hopper with a large decorative pierced flywheel, 49 cm wide x 73 cm overall height. together with a "Vono"(Tipton) cast iron patent knife cleaner, on its original wood baseboard,
- Private collection **£200-300**



- 397 A 19th century miniature relief portrait in wax of Queen Victoria, facing left, glazed in a walnut frame, handwritten text verso reading 'Queen Victoria at the age of 17', 17.5 cm x 15.3 cm (full dimensions). Label attached verso for Mr D Morrison, Gem Engraver / Miniature Modeller, London. **£400-500**



Fine Art, Antiques & Interiors, 24th Nov, 2022 09:30

- 398 An early to mid-20th century collection of 39 exotic wood specimens, each labelled and with a printed index, in fitted display box, 26.5 cm x 23.5 cm x 8.5 cm. **£300-400**



- 399 Andy Warhol (1928-1987), a One Dollar bill, 1969, hand signed by the artist in black marker, Serial number: K11376103A, 'Andy Warhol' stamp verso., displayed in a perspex frame, the frame 15 cm x 20.2 cm. **£500-700**



- 400 A collection of reproduction cast iron "Money Banks" including "Paddy & The Pig, Jonah & The Whale, Dentist, Uncle Sam, Magician Bank" and others. (Qty: 10)
Private estate **£100-150**



- 401 An Anglo-Indian porcupine quill, ebony and inlaid bone basket, 10 cm x 26.5 cm x 21 cm. **£100-150**



- 402 A large collection (approximately 70), late 19th to early 20th century Thames Conservancy enamel plates / licences, used for hire boat fleets, dating from c.1896 - 1948 **£150-250**



Fine Art, Antiques & Interiors, 24th Nov, 2022 09:30

- 403 Two vintage cast iron Bus Stop signs, the largest 36 cm x 30 cm, together with a similar 'Bus Stop Fare Stage' enamel sign (believed from Oxford), 30.5 cm x 48 cm, five London Transport 'E' plates, variously labelled and a framed London transport 'Certificate of Service', issued to Emielius de Bock, for 35 years service, dated January 1983.
(Qty: 9) **£150-250**



- 404 Of Historical Indian interest; a hangman's noose (remnant) that was used during the Indian mutiny of 1857, accompanied by a fragile handwritten account of the provenance of the artefact and a copy photograph of the executions resulting from the mutiny and a typed account from our late client detailing the circumstances of its acquisition.

A private estate

This item was given to our late client by an elderly lady, it was found when she was clearing the property of her late father some years earlier: her late father had been a military cleric in colonial India at the time of the Indian mutiny and detailed the origin of this gruesome item in the handwritten note that accompanies this lot. **£100-150**



- 405 A set of seven turned wood whistles in a leather and metal belt holster, possibly Middle Eastern, 18 cm long, two Middle Eastern leather and metal mounted belt pockets, a fabric covered water bottle, 31 cm high, two Thai bronze figures, a pair of Chinese carved hardwood dogs and balls, an African tribal carving, a pair of balances, a silver plated horse's hoof inkstand, 15 cm high, and four small studio pottery vases by Jane Searle, Gordon Menzies and Sark **£100-150**



- 406 Five original quad film posters, comprising 'Foxhole in Cairo' (USA, 1960, 71 cm x 56 cm), 'Shock Treatment' (USA, 1964, 68 cm x 104 cm), 'Agent 8 3/4' (USA, 1969, 69 cm x 104 cm), 'Paul Newman - The Secret War of Harry Frigg' (USA 1968, 102 cm x 76 cm), and 'Roger Moore, A Cara Descubierta' (A Naked Face, Italian 1984, 71 cm x 99 cm).
(Qty: 5) **£150-250**



- 407 The Beatles: A set of four Richard Avedon psychedelic posters from a Dutch limited first edition printing for Varagids, from the 1968 photoshoot by Avedon, comprising four individual portraits of The Beatles, published by Cowles Education Corporation and printed by Waterlow & Sons Ltd, each measuring 47 cm x 68 cm.
(Qty: 4) **£200-300**



Fine Art, Antiques & Interiors, 24th Nov, 2022 09:30

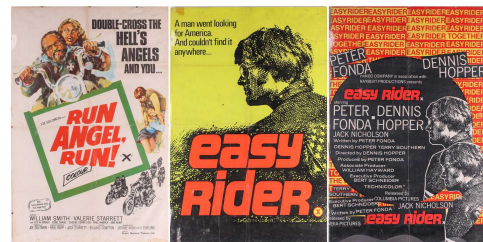
- 408 Six original posters of political interest, comprising 'Gone With The Wind', a political satire poster issued in opposition to the Reagan and Thatcher administrations (1983 Bob Light/ John Huston East End Offset, 45 cm x 63 cm), a rare Nelson Mandela freedom rally poster for a march in Hyde Park, London, 17th July 1988 (1988 East End Offset, 42 cm x 60 cm), a poster advertising a march for "The Right To Be Naked In Public" taking place at New Scotland Yard, 15th July 2000 (2000 printers, unknown, 42 cm x 59 cm), and a set of three posters of quotes from the film '1984' (George Orwell), stating "Freedom is Slavery", "War is Peace" and "Ignorance is Strength" (unknown date and printers, each 51 cm x 76 cm). (Qty: 6) **£150-250**



- 409 Five Belgian film posters / lobby cards, comprising 'Latitude Zero' (1969, 35 cm x 54 cm), 'Le Pandhouser' (The Pawnbroker, 1964, 35 cm x 54 cm), 'Les Rats du Trottoir' (1960s/1970s, 35 cm x 54 cm), 'Operation Scotland Yard Sapphire' (1959, 35 cm x 54 cm), and 'Planete Interdite' (The Forbidden Planet, 1956, 35 cm x 54 cm). (Qty: 5) **£100-150**



- 410 Three original film posters, comprising two different editions of 'Easy Rider' (USA, 1969, 50 cm x 76 cm) and 'Run Angel, Run!' (USA, 1969, 50 cm x 75 cm). (Qty: 3) **£100-200**



- 411 Six original film posters, comprising 'U.N.K.L.E One Spy too Many' (50cm x 75cm), 'Caveman' (102cm x 76cm), 'Every Home Should Have One' (glazed 33cm x 52cm), 'Sexapoppin' (glazed 34cm x 54cm), 'The Love Ins' (glazed 36cm x 56cm), and 'Hell Drivers' (42cm x 54cm). **£100-200**



- 412 Three original quad film posters, comprising 'Electra Glide In Blue' (USA, 1973, 101 cm x 76 cm), 'The Last Wave' (UK, 1977, 100 cm x 76 cm), and 'The Scanners' (UK, 1981, 101 cm x 76 cm). (Qty: 3) **£150-250**



Fine Art, Antiques & Interiors, 24th Nov, 2022 09:30

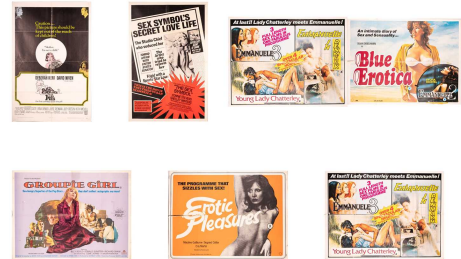
- 413 Six Belgian film posters / lobby cards, comprising 'Venus in Pels' (Venus in Furs, 1967, 33 cm x 55 cm), 'Gros Coup a Pampelune' (Carnival of Thieves, 1960s, 54 cm x 35 cm), two 'Antarctica' (1983, 35 cm x 54 cm), 'Le Plus Fute De Sherlock Holmes' (1991, 35 cm x 54 cm), and 'Le Programme Final' (1973, 54 cm x 35 cm).
(Qty: 6) **£80-120**



- 414 Eight Belgian film posters, comprising three examples of 'Deux Corniauds Contre Hercule' (Hercules in the Valley of Woe, 1961, 35 cm x 45 cm), 'Le Voleur de Bagdad' (The Thief of Bagdad, 1960s, 35 cm x 54 cm), two 'La Grande Chevauchee de Robin Des Bois' (Long Live Robin Hood, 1971, 35 cm x 54 cm), 'Le Grand Sommeil' (The Big Sleep, 1978, 35 cm x 54 cm), and 'Attentats a la Pudeur' (1950s/1960s, 35 cm x 53 cm).
(Qty: 8) **£80-120**



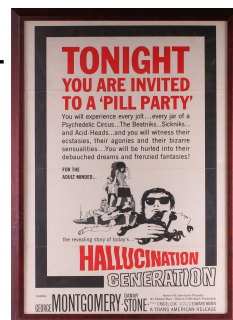
- 415 Seven original quad film posters, comprising 'Prudence and the Pill 1968' (69 cm x 104 cm), 'Groupie Girl 1970' (100 cm x 76 cm), 'Erotic Pleasures' (101 cm x 76 cm), three 'Emanuele 3/ Emanuele in Denmark/ Young Lady Chatterley' (101 cm x 76 cm), and 'The Sex Symbol' (69 cm x 104 cm).
(Qty: 7) **£80-120**



- 416 Three original quad film posters, comprising 'Yukon Vengeance' (USA, 1954, 69 cm x 104 cm), 'The Batchelor Party' (USA, 1957, 71 cm x 55 cm), and 'The Third Voice' (USA, 1960, 69 cm x 104 cm).
(Qty: 3) **£200-300**



- 417 A framed and perspex glazed original quad film poster for 'Generation Hallucination' (USA, 1967), 78 cm x 108 cm. **£100-200**



Fine Art, Antiques & Interiors, 24th Nov, 2022 09:30

- 418 Six original Belgian film posters / lobby cards, comprising 'Le Mystere des Deux Oceans' (Secret of Two Oceans, 1956, 35 cm x 54 cm), 'Les Desempares' (The Reckless Moment, 1949, 35 cm x 54 cm), 'De Vier Ruiters van de Apocalypse' (The Four Horsemen of the Apocalypse, 1960s, 35 cm x 54 cm), 'Operation Taekwando' (1960s/ 1970s, 35 cm x 54 cm), and two of 'Deathsport' (1978, 35 cm x 54 cm).
(Qty: 5) **£100-150**



- 419 Two original quad film posters, comprising 'Cry Terror' (USA, 1958, 68 cm x 104 cm) and '11 Harrowhouse' (UK, 1973, 101 cm x 76 cm).
(Qty: 2) **£150-250**



- 420 Three original quad film posters, comprising 'The Boatniks' (UK, 1970, 100 cm x 76 cm), 'Odds and Evens' (UK, 1978, 101 cm x 76 cm) and 'El Caballero Verde', Sean Connery, (The Green Knight, Spanish, 1984 68 cm x 98 cm), together with a later reproduction poster for 'One Way Ticket To Hell' (67cm x 100cm).
(Qty: 4) **£100-200**



- 421 A Clockwork Orange; UK quad poster of the 2000 re-release of the film on Warner Bros, (101 cm x 77cm). **£150-250**



- 422 Four original quad film posters, comprising 'Fail Safe' (USA, 1964, 69 cm x 104 cm), 'The Quare Fellow' (UK, 1962, 101 cm x 75 cm), 'Puppet on a Chain' (USA, 1971, 68 cm x 103 cm), and 'To The End of The Earth' (USA, 1948, 101 cm x 76 cm).
(Qty: 4) **£150-250**



Fine Art, Antiques & Interiors, 24th Nov, 2022 09:30

- 423 Two original film posters, comprising 'Jason et les Argonautes', French, 1963 (glazed 60 cm x 80 cm) and 'The Final Programme' UK, 1973 (50 cm x 75 cm), together with a later print of 'Psych-Out' (71 cm x 56 cm).
(Qty: 3) **£80-120**



- 424 Four original film posters, comprising 'The Ceremony' (1963, USA, 36 cm x 92 cm), 'Journey to the Far Side of the Sun' (1969, Australian, 33 cm x 76 cm), 'Bloody Mama' (1970, Italian, 67 cm x 37 cm), and 'Caveman' (1981, UK, 33 cm x 76 cm).
(Qty: 4) **£100-150**



- 425 Seven original quad film posters, comprising 'Carrie' (USA, 1976, 99 cm x 67 cm), 'Rudyard Kipling- Alien Nation' (USA, 1988, 52 cm x 76 cm), 'Prophecy' (UK, 1979, 100 cm x 75 cm), 'Comin At Ya' (USA, 1981, 101 cm x 76 cm), 'Phantasm II' (USA, 1988, 101 cm x 76 cm), 'Monkey Shines' (1988, USA 101 cm x 76 cm), and 'The Exorcist I & II' (USA, 1980 release, 101 x 76 cm).
(Qty: 7) **£200-300**



- 426 Six quad film posters comprising, 'Sylvester Stallone, F.I.S.T.' (USA, 1978, 69 cm x 104 cm), 'Violent Streets' (USA, 1981, 102 cm x 76 cm), 'The Master Plan' (USA, 1954, 68 cm x 104 cm), 'What Did You Do In The War Daddy?' (UK, 1966, 76 cm x 100 cm), 'Explosion' (UK, 1969, 101 cm x 76 cm), and a modern reproduction of 'The Wild One' (100 cm x 70 cm).
(Qty: 6) **£100-200**



- 427 Seven Belgian film posters / lobby cards, comprising 'Chaque Chose En Son Temps' (The Family Way, 1966, 54 cm x 35 cm), 'Julius Cesar' (1953, 54 x 35 cm), 'La Monde Sans Voile' (1964, 35 cm x 54 cm), 'Supersonique en Peril' (1977, 35 cm x 54 cm), 'Requiem Pour Un Canaille' (Every Man is My Enemy, 1967, 35 cm x 54 cm), and two of 'L'Orphelin de la Jungle' (Tarzan, 1950s).
(Qty: 7) **£80-120**



Fine Art, Antiques & Interiors, 24th Nov, 2022 09:30

- 428 Six Belgian film posters / lobby cards, comprising 'Rodan' (32 cm x 42 cm), 'Le Chein Loup' (38 cm x 60 cm), 'Mission Impossible: Contra El Hampa' (33 cm x 42 cm), 'James Bond: Al Servicio Secreto De Su Majestad' (32 cm x 42 cm), 'Joe' (36 cm x 54.5 cm), and 'Danger Man' (39 cm x 56 cm). **£80-120**



- 429 Three original quad film posters, comprising 'Monkey On My Back', UK, 1957 (100 cm x 70 cm), 'Dealing: Or the Berkley to Boston Forty Brick Lost Bag Blues', USA, 1971 (70 cm x 100 cm), and 'Doberman Patrol', USA, 1973 (70 cm x 100 cm). (Qty: 3) **£100-200**



- 430 Four Belgian film posters / lobby cards, comprising two 'Les Survivants Le Fin Du Monde' (Damnation Alley, 1977, 35 cm x 54 cm), 'Overwinning Van De Kracht' (The Silent Flute, 35 cm x 58 cm), and 'La Magnifique Jackie Chan' (1970s/1980s, 35 cm x 54 cm). (Qty: 4) **£80-120**



- 431 Four original quad film posters, comprising 'Song Without End' (USA, 1960, 69 cm x 104 cm), 'Dear Brigitte' (USA, 1965, 69 cm x 104cm), 'Getting Straight' (USA, 1970, 69 cm x 104 cm), and 'Duel of Fire' (Italian, 1962, 69 cm x 104 cm). (Qty: 4) **£100-200**



- 432 Sweeney: two original quad film posters, one a split advertisement 'Sweeney/ Drum' (UK 1977 102cm x 76cm), and 'Sweeney II' (UK 1978 100cm x 70cm). (Qty: 2) **£100-200**



Fine Art, Antiques & Interiors, 24th Nov, 2022 09:30

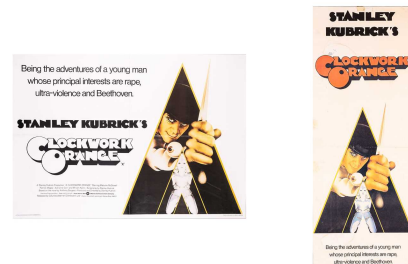
- 433 Five original quad film posters comprising "Me, Natalie" (100cm x 76cm), "The Nympho/ The Erotic Three" (100cm x 76cm), "Sex After Six/ Versatile Lovers" (101cm x 76cm), "Confessions of a Young American Housewife" (50cm x 76cm), and "Intimate Confessions of a Chinese Courtesan" (50cm x 76cm). **£80-120**



- 434 Three original quad film posters, comprising 'Walt Disney - Dr. Syn' (USA, 1963, 102 cm x 77 cm), 'The Adventurers' (UK, 1970, 76 cm x 101 cm), and 'Paws, Claws and Jaws' (USA, 1978, 69 cm x 104 cm). (Qty: 3) **£100-200**



- 435 Stanley Kubrick's 'A Clockwork Orange', an original day bill poster (31 cm x 81 cm), together with a modern reproduction quad of the 1971 film poster (100 cm x 70 cm). (Qty: 2) **£100-200**



- 436 Five original quad film posters, comprising 'The Silent One' (1960s/1970s, 100 cm x 77 cm), 'Harry Black and the Tiger' (USA, 1958, 68 cm x 104 cm), 'Nobody Runs Forever' (UK, 1968, 101 cm x 76 cm), 'Killers Three' (USA, 1968, 69 cm x 104 cm), and 'Vengeance' (USA, 1964, 68 cm x 104 cm). (Qty: 5) **£100-200**



- 437 Six original film posters comprising 'LSD' Italian 1967 (framed and glazed 35cm x 72cm), 'I am a Virgin', Belgian (glazed 60cm x 40cm), 'Les Bidasses En Folie', Belgian (glazed 40cm x 50cm), 'Fritz The Cat', USA, 1972 (glazed 50cm x 75cm), and 'Que Peut On Fire Avec 7 Femmes' and 'Les Follies Nuits D'Ibiza', Belgian, (framed and glazed as a set 80cm x 60cm). (Qty: 6) **£100-200**



Fine Art, Antiques & Interiors, 24th Nov, 2022 09:30

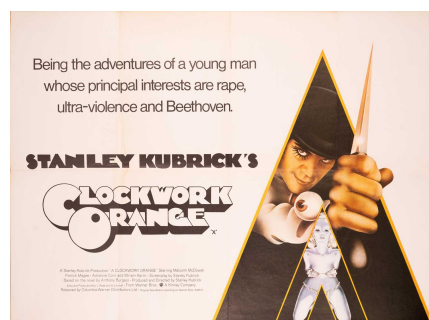
- 438 Seven original Belgian film posters / lobby cards, comprising two of '1ere Brigade Criminelle' (1960s, 35 cm x 54 cm), 'Infer Prive' (Private Hell, 1955, 35 cm x 54 cm), 'La Peur Aux Tripes' (Assassination, 1967, 35 cm x 54 cm), 'La Justiciere' (1960's, 35 cm x 54 cm), and two of 'Tocht Door de Geets' (Altered States, 1981, 35 cm x 59 cm).
(Qty: 5) **£100-150**



- 439 Six original Belgian film posters / lobby cards, comprising 'L'Orient Erotique' (36 cm x 53 cm), three of 'The Insatiables' (37 cm x 54 cm), 'Sex Trip a Bangkok' (36 cm x 55 cm), and 'Alyse & Chloe' (36 cm x 57 cm).
(Qty: 6) **£60-80**



- 440 A Clockwork Orange; an original 1971 UK quad poster, printed by W.E Berry Ltd Bradford', 102 cm x 76 cm. **£600-800**



- 441 Seven original Belgian film posters comprising "Candy" (36cm x 54cm), "Le Chemin de L'Enfer" (55cm x 36cm), two "Amerika de Naakte Waarheid" (36cm x 60cm), "Voici L'Amerique" (35cm x 54cm), "International Burlesque- Opiumdrift" (37cm x 55cm), and a day bill for "Fritz the Cat" (34cm x 76cm). **£80-120**

