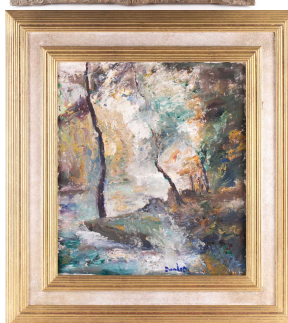


Fine Art & Antiques, Thu, 25 November 2021 9:30

- 1 † Thierry Poncelet (b. 1946) Belgian, portrait of a labrador in military uniform, oil on board, signed to lower left corner, 83.5 cm x 63 cm in a giltwood frame.
Purchased by the vendors from a Belgian antiques shop, circa 20 years ago. **£1,000-1,500**



- 2 Ronald Ossory Dunlop RA (1894-1973) Irish, 'Sunlight on the Stream', c.1966, oil on canvas, signed to lower edge, 44 cm x 39.7 cm in a gilt frame.
Private collection. Brandler Galleries label verso, along with a label for 'Regent Gallery (Cheltenham) Summer Exhibition 1967' **£400-600**



- 3 † Charles Horwood (1908-1975), impressionist style city scene, with boats on a river, oil on board, 19.5 cm x 25 cm in a gilt frame. **£100-200**



- 4 † William Barnes (1916-c.1990), lakeside landscape, watercolour, signed to lower left corner, 33 cm x 46 cm framed and glazed. **£100-150**

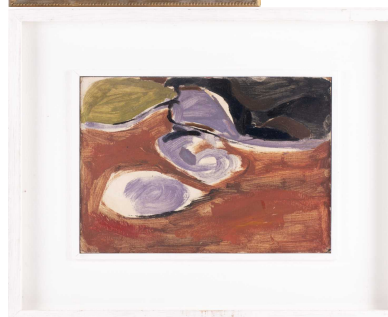


- 5 † Geoff Bartlett (20th century), 'Fishermens Cottages', watercolour, signed to left side, 17 cm x 37 cm framed and glazed. **£100-150**



Fine Art & Antiques, Thu, 25 November 2021 9:30

- 6 Mabel Withers (1870-1956), a mountainous landscape, watercolour, signed to lower left corner, 27 cm x 47.5 cm framed and glazed. **£100-150**
- 7 † Mary Fedden OBE, RA, RWA (1915-2012), 'Cat & Egg', 1992, watercolour, pencil signed and dated, 14 cm x 21.2 cm framed and glazed.
Private collection. Brandler Galleries label verso, with handwritten 'From her studio, 5/10/92'. **£3,000-5,000**
- 8 19th century school, a young girl with a fishing net, seated on a rock, unsigned watercolour, 39 cm x 28 cm glazed in a gilt frame. **£100-150**
- 9 † Clifford Fishwick (1923-1997), 'Abstract - Rocks', oil on canvas laid on board, signed verso, 17.5 cm x 25 cm, framed and glazed.
Private collection. **£150-250**
- 10 19th century Continental school, a young girl knitting, while a boys looks on, oil on panel, initialled 'HH', 58 cm x 47 cm in a giltwood frame. **£100-150**



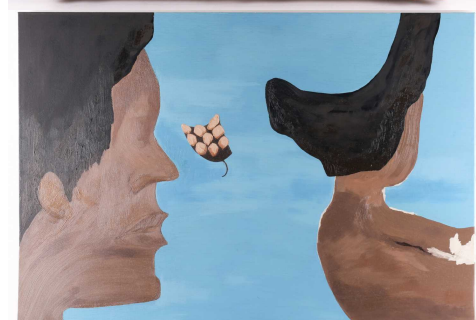
Fine Art & Antiques, Thu, 25 November 2021 9:30

- 11 † Charles Horwood (1908-1975), abstract study of a female dancer, oil on panel, signed to lower right corner, 29 cm x 24 cm glazed in a gilt frame. **£100-200**
- 12 Joy Packenham (Irish), a still life study of tulips in a vase, watercolour, 36.5 cm x 27 cm (Royal Institute of Watercolour Painters label to verso, with artist's name), together with Rose (early 20th century), Mediterranean Harbour scene, watercolour, signed, 28 cm x 38 cm, each framed and glazed. (Qty: 2) **£150-250**
- 13 † Christopher Orr (b.1943), 'To the Farm', watercolour, 56 cm by 76 cm, framed and glazed, (Gorner & Millard label to verso, signed) **£150-250**
- 14 † Denis Pannett (b.1939), 'Gret Day, Rotherhithe', oil on panel, signed to lower left corner, 13.8 cm x 18.2 cm in a gilt frame, together with two watercolours by the same hand, 'Evening at Westminster' (12.5 cm x 17.2 cm) and 'Gladys in the Thames Estuary' (12.5 cm x 17.5 cm), each framed and glazed. (Qty: 3) **£150-250**
- 15 Adolf Luntz (1875-1934), Cathedral tower, possibly Saints Peter & Paul Cathedral, Stuttgart, signed and dated 1900, inscribed to verso, oil on canvas, 85 cms x 38 cms in a gilt frame. **£400-600**



Fine Art & Antiques, Thu, 25 November 2021 9:30

- 16 † Bernhard Vogel (b.1961), 'Harbour near Galway', watercolour, signed to lower left corner, 29.5 cm x 40 cm, glazed in a gilt frame. **£150-250**
- 17 Basile Poustochkine (1893-1973) French/Russian, a summer landscape, oil on board, signed to lower left corner, 22 cms x 31 cms in a gilt frame. **£300-400**
- 18 † Robert William Hill (1932-1990), abstract rural landscape, oil on canvas, signed and dated 1960 to top left corner, 49 cm x 75.5 cm in a gilt frame. **£200-300**
- 19 † Marcel Masson (1911-1988), a cottage and lake scene, signed to lower right corner, oil on canvas, 26 cms by 40 cms in a giltwood frame. **£200-300**
- 20 Marinela Marin (contemporary), 'Untitled', 2013, oil on canvas, signed to edge, 61 cm x 91.5 cm. **£200-300**



Fine Art & Antiques, Thu, 25 November 2021 9:30

- 21 † Gena Lynam (contemporary), 'Connemara Coastline', oil on canvas, signed and titled verso, 40 cm x 40 cm glazed in a box frame. **£200-300**



- 22 Stanley Port FRSA (contemporary), 'On the Way to Skye', a landscape, oil on canvas, 50 cm x 70 cm in a silvered frame. **£200-300**



- 23 Katherine W Hardy (20th/21st century), an Irish landscape, 2009, unframed oil on canvas, signed verso, 50.7 cm x 76.5 cm. **£200-300**



- 24 Iulian Atomei (contemporary), 'Vineyard Farmhouse at Saint-Maurice', 2020, oil on canvas, signed to lower left corner, 46 cm x 56 cm. **£200-300**



- 25 Marinela Marin (contemporary), 'Tulips in a Vase, with Vanessa Bell', 2020, oil on canvas, signed to lower left corner, 80 cm x 60 cm. **£200-300**



Fine Art & Antiques, Thu, 25 November 2021 9:30

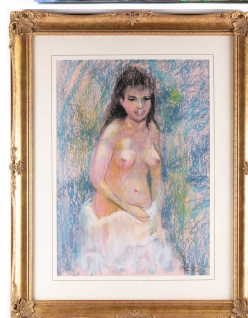
- 26 † Frederick Donald Blake (1908-1997), 'Street Market', watercolour, signed to lower right corner, 45 cm x 69 cm, together with another by the same hand, 'Street', 16 cm x 45 cm, each framed and glazed. (Qty: 2) **£200-300**



- 27 Stanley Port FRSA (contemporary), 'Milford Experience', a landscape, oil on canvas, 50 cm x 70 cm, unframed. **£200-300**



- 28 † Tom Keating (1917-1984), pastel portrait of a female nude, signed to lower right corner, 51 cm x 36 cm framed and glazed. Private collection. Brandler Galleries label verso. **£200-300**



- 29 Follower of Alfred James Munnings (1878-1959), 'Nr Ludham, Norfolk Broads', oil on canvas, bearing a signature, 22 cm x 40 cm in a gilt frame. Private collection. **£200-300**

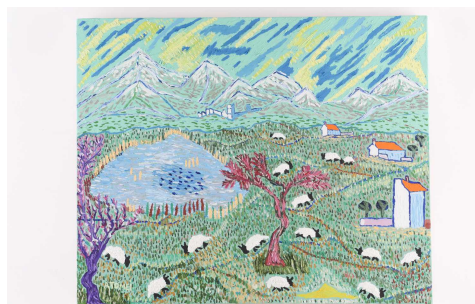


- 30 Kwan Chin (b.1946) Malaysian, two seated women, signed to lower left corner, batik, 49 cm x 76.5 cm. **£250-350**



Fine Art & Antiques, Thu, 25 November 2021 9:30

- 31 Iulian Atomei (contemporary), 'Sheep in a Landscape', 2020, oil on canvas, signed to lower left corner, 46 cm x 56 cm. **£200-300**



- 32 † Colin David Kent (b.1934), watercolour landscape, signed to lower left corner, 36 cm x 68 cm framed and glazed. **£200-300**



- 33 Basile Poustochkine (1893-1973) French/Russian, summer landscape, oil on board, signed to lower left corner, 22 cms x 31 cms in a gilt frame. **£300-400**



- 34 Frank Dadd ROI (1851-1929), a pair of miniature watercolours, 'A Love Story' and 'A Stitch in Time', signed and dated 1919, each 7 cm x 9.5 cm, glazed in a gilt frame. (Qty: 2) **£300-500**



- 35 John Anthony Park (1880-1962) British, buildings in a coastal landscape, oil on panel, signed to lower-left corner, 36 cm x 43.5 cm in a wooden frame. Private collection, no written details available. **£400-600**



Fine Art & Antiques, Thu, 25 November 2021 9:30

- 36 Jean Marie Auguste Jugelet (1805-1875) French, maritime seascape, off Dieppe, oil on panel, signed to lower left corner, 25 cm x 40 cm in a giltwood frame. **£1,500-2,000**



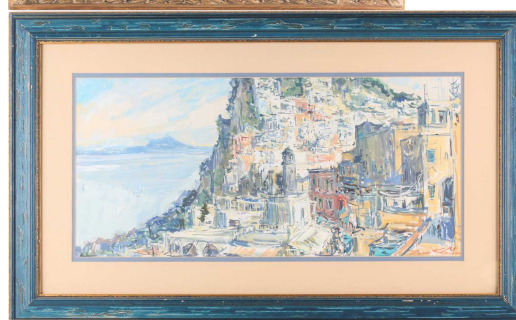
- 37 † Ronald Ossory Dunlop RA (1894-1973) Irish, 'Working by the Tree', c.1966, oil on canvas, signed to lower left corner, 49.6 cm x 45 cm in a gilt frame. Private collection. Brandler Galleries label verso **£400-600**



- 38 Wilhelm Schroeter (1849-1904), a rural landscape, oil on canvas, signed and dated 1880, 39.8 cms by 57 cms in a giltwood frame. **£500-700**



- 39 † Sergei Chepik (1953-2011) Russian/French, 'Capri', 2000, watercolour, signed to lower right corner, 27 cm x 58 cm glazed in a wooden frame, Catto Gallery labels verso. Private collection. **£3,000-5,000**



- 40 Francois Nardi (1861-1936) French, a harbour scene, oil on canvas, signed to lower right corner, 35 cm x 27 cm in a giltwood frame. **£500-700**



Fine Art & Antiques, Thu, 25 November 2021 9:30

- 41 † Ben Levene RA (1938-2010), 'Mood Landscape', oil on canvas, initialled to lower right corner, 50 cm x 54 cm in a gilt frame.
Private collection. Royal Academy Summer Exhibition (1994) label verso. **£700-1,000**



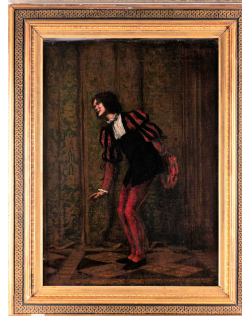
- 42 Robert McGregor RSA (1847-1922) Scottish, a large oil on canvas, a family looking at the ceramic wares of a trader, a donkey pulling his cart, signed to lower left corner, 74 cm x 135 cm in a gilt frame. **£800-1,200**



- 43 † Raymond Campbell (b.1956) British, a still life study of fruit, oil on board, signed to lower left corner, 38 cm x 74 cm in a giltwood frame. **£800-1,200**



- 44 Ferdinand Victor Léon Roybet (1840-1920) French, a young boy in a cavalier costume, signed, oil on canvas, 59 cms by 42 cms in a gilt frame.
Private collection **£600-800**



- 45 † Fred Yates (1922-2008), Cornish quayside buildings, oil on panel, signed to lower right corner, 44.5 cm x 78.5 cm in a green-painted frame.
Private collection, purchased from the artist by the vendor's family. **£1,000-1,500**



Fine Art & Antiques, Thu, 25 November 2021 9:30

- 46 Otto Eduard Pippel (1878-1960), trees with lake and a mountainous scene beyond, impasto oil on canvas, signed to lower right corner, 74 cms by 74 cms in a gilt frame. **£1,000-1,500**



- 47 † Donald McIntyre (1923-2009) 'Interior No 3', oil on board, signed to lower right corner, 49 cm x 59 cm framed and glazed. Private collection. **£1,500-2,000**



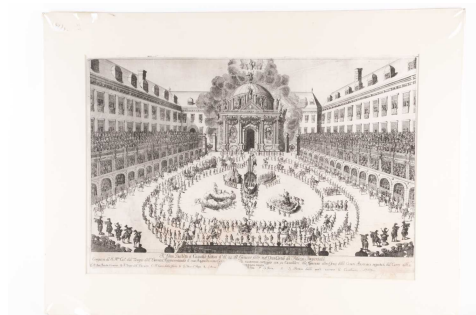
- 48 Auguste Louis Veillon (1834-1890), a forest scene with a figure and lake beyond, signed to lower right corner and also verso, oil on canvas, 38 cms by 70 cms in a gilt frame. **£2,000-3,000**



- 49 Fiona Howard (contemporary), two limited edition signed prints on collage, 'Lodi Gardens, Delhi', the largest 26.5 cm x 22.2 cm, each framed and glazed. (Qty: 2) **£80-120**



- 50 Gerrard Bouttats (Flemish b, c1630) 'Il Gran Balletto a Cauallo Fattosi il di 24 di Genaro 1667, net Cortile del Pallazzo Imperiale, engraving, 39.5 cm x 59 cm **£80-120**



Fine Art & Antiques, Thu, 25 November 2021 9:30

- 51 † Chris Orr (b.1943), 'Jaguar's Children', 1996, a large limited edition signed print, numbered 6/20, 118 cm x 79 cm, framed and glazed.
Private collection. **£100-150**



- 52 M.Uchida (20th century), 'Song', limited edition signed screenprint, numbered 122/300, 34 cm x 24.5 cm with margins, framed and glazed.
Private collection. Christie's Contemporary Art certificate present **£100-150**



- 53 Kyu-Baik Hwang (b.1932), 'Swans', limited edition signed mezzotint, numbered 94/110, 27 cm x 34.5 cm with margins, framed and glazed.
Private collection. Christie's Contemporary Art certificate present. **£100-150**



- 54 Linda Le Kinff (b.1949), limited edition signed lithographic print, a sleeping woman with her partner, numbered 11/200, 47.5 cm x 64 cm framed and glazed.
Private collection **£150-250**



- 55 † Jurgen Gorg (b.1951) 'Die Hurde', signed lithograph on paper, No. 44 in an edition limited of 180, gallery blind stamp, 65 cm x 49 cm, framed and glazed.
Private collection. Christie's Contemporary Art certificate present. **£150-250**



Fine Art & Antiques, Thu, 25 November 2021 9:30

- 56 Jansson (Jan), a mid-17th Century hand-coloured map, 'Hantoniae Comitatus Cum Bercheria' (Map of Hampshire and Berkshire), 45 cm x 55 cm, together with an 18th-century map of early Judea/Israel, each framed and glazed. (Qty: 2)
Private collection. **£150-250**



- 57 Two framed cuttings from 'Punch or the London Charivari', from 'When We Were Very Young', with hand-coloured illustrations after the engravings by Ernest Shepard. (Qty: 2)
Private collection. **£200-300**



- 58 Hemisphaerium Coeli Australe Stellatum Antiquum, an 18th-century hand coloured map of the stars of the southern hemisphere, 29.5 cm x 34.5 cm, together with an 18th-century hand-coloured map of Cambridgeshire, from the Abridges Camden's Britain, for J. Wild, 13.5 cm x 16 cm each framed and glazed. (Qty: 2)
Private collection. **£200-300**



- 59 Hugo Ulbrich (1867-1928) German, four etchings, each of city landscapes, three pencil signed, the largest 27 cm x 20.5 cm, each framed and glazed. (Qty: 4) **£200-300**



- 60 Robert Kushner (b.1949) American, 'Resting IX', 1995, paper collage with monoprint and etching on paper, signed and titled in pencil, 93 cm x 117 cm with margins, framed and glazed.
£200-300



Fine Art & Antiques, Thu, 25 November 2021 9:30

- 61 † John Piper (1903-1992), 'From Photo by EP, Stonehenge', limited edition print, numbered 7/850, 37 cm x 55.5 cm with margins, framed and glazed. **£200-300**



- 62 † Harold Riley (b.1934) British, 'View of the Irwell at Adelphi', charcoal on paper, signed and dated '71 to lower right corner, 45.5 cm x 28 cm, framed and glazed.
Private collection. Comes with a photocopied letter from the artist to the vendor, on Leigh Gallery headed paper, dated 1972, confirming the work is 'in my own hand'. **£800-1,200**



- 63 Linda Le Kinff (b.1949), 'La Femme Bleu', limited edition signed lithograph, numbered 112/200, 47 cm x 64.5 cm with margins, framed and glazed.
Private collection. Christie's Contemporary Art certificate present. **£150-250**



- 64 † Laurence Stephen Lowry (1887-1976), 'Woman with Beard' limited edition signed lithographic print, 58 cm x 48 cm with margins, Fine Art Trade Guild blindstamp, printed number '747', loose in mount.
Provenance: From the collection of Monty Bloom (See Dawsons website articles for more details)

Extract from 'A COLLECTOR'S LIFE' Monty Bloom and L.S. Lowry © Martin Bloom, 2020':

One particular painting in that 1957 documentary was purchased by my father, together with the original drawing upon which it is based, and a signed numbered print of it is for sale within Dawsons December sale. Woman with a Beard was based on a bearded woman Lowry met on a train journey to Paddington. Mervyn Levy in his book, The Paintings of L.S. Lowry, sees it as "a succinct example of the artist's power to express the terrible isolation of the individual soul, an isolation unquestioned and blithely accepted. Everything is concentrated in the face itself, the setting from which we can extricate ourselves only by renunciation of self. Lowry's imagery is the measure of a common destiny." **£1,000-1,200**



Fine Art & Antiques, Thu, 25 November 2021 9:30

- 65 Chris Orr (b.1943), 'Down on Mechanical Farm, (Hot Summer)', 'unique' print on paper, 1991, 62 cm x 56 cm framed and glazed.
Private collection. **£200-300**



- 66 Eric Ravilious (1903-1942), 'Wiltshire Landscape', limited edition print, numbered 240/950, 41 cm x 54 cm framed and glazed. **£200-300**



- 67 † Beryl Cook (1926-2008), two limited edition pencil signed lithographic prints, 'Fairy Dell', 1981, (41 cm x 39 cm with margins, Fine Art Trade Guild blindstamp) and 'Ladies who Lunch' (40.5 cm x 43.5 cm with margins, numbered 641/650, Alexander Gallery Publication blindstamp), each framed and glazed. (Qty: 2) **£300-500**



- 68 Eric Ravilious (1903-1942), 'Halstead in the Snow', limited edition print, numbered 10/850, 44 cm x 56.5 cm with margins, framed and glazed. **£300-500**



- 69 † Mary Fedden (1915-2012), two limited edition signed prints, 'The Tabac Jar', numbered 11/550 (22.5 cm x 28.9 cm with margins), and 'The Orange Mug', numbered 11/550 (22.7 cm x 27.2 cm with margins), each framed and glazed. (Qty: 2) **£300-500**



Fine Art & Antiques, Thu, 25 November 2021 9:30

- 70 † Harold Riley (b.1934) British, 'View of the Irwell at Adelphi', charcoal on paper, signed and dated '71 to lower right corner, 44 cm x 28 cm, framed and glazed.
Private collection. Comes with a photocopied letter from the artist to the vendor, on Leigh Gallery headed paper, dated 1972, confirming the work is 'in my own hand'. **£800-1,200**



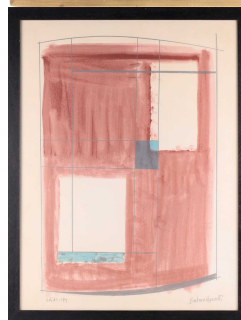
- 71 Donald Hamilton Fraser (1929-2009) British, 'Reflected Light', limited edition and signed screenprint, numbered 88/200, 64 cm x 44 cm with margins, framed and glazed.
Private collection. Christie's Contemporary Art certificate present. **£100-200**



- 72 † Harold Riley (b.1934) British, 'Study of Buildings in Hodge Lane', charcoal on paper, signed and dated '70 to lower right corner, 25 cm x 21 cm glazed in a gilt frame.
Private collection. Comes with a photocopied letter from the artist to the vendor, on Leigh Gallery headed paper, dated 1972, confirming the work is 'in my own hand'. **£800-1,200**



- 73 † Barbara Hepworth (1903-1975), 'Rangatira II' (from the 'Opposing Forms' series), 1970, screenprint in colours on TH Saunders wove paper (with watermark), signed 'Artists Copy', 75 cm x 56.5 cm framed and glazed.
Private collection. **£1,000-1,500**



Fine Art & Antiques, Thu, 25 November 2021 9:30

- 74 † Laurence Stephen Lowry (1887-1976), 'Woman with Beard' limited edition signed lithographic print, 58 cm x 48 cm with margins, Fine Art Trade Guild blindstamp, printed number '748', loose in mount.
Provenance: From the collection of Monty Bloom (See Dawsons website articles for more details)

Extract from 'A COLLECTOR'S LIFE' Monty Bloom and L.S. Lowry © Martin Bloom, 2020' :

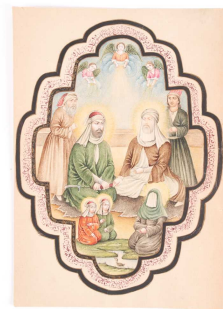
One particular painting in that 1957 documentary was purchased by my father, together with the original drawing upon which it is based, and a signed numbered print of it is for sale within Dawsons December sale. Woman with a Beard was based on a bearded woman Lowry met on a train journey to Paddington. Mervyn Levy in his book, The Paintings of L.S. Lowry, sees it as "a succinct example of the artist's power to express the terrible isolation of the individual soul, an isolation unquestioned and blithely accepted. Everything is concentrated in the face itself, the setting from which we can extricate ourselves only by renunciation of self. Lowry's imagery is the measure of a common destiny." **£1,000-1,200**



- 75 Giovanni Battista Piranesi (1720-1778), Classical Roman scenes, five monochrome engravings: 'Veduta della Piazza della Rotonda' (40 cm x 54 cm), 'Veduta sul Monte Quirinale del Palzaao dell'Eccellentissima Casa Barberini Architettura del Cav. Bernino' (39 cm x 62 cm), 'Veduta dell'Avanzo del Mausoleo di S.Elena...' (39.5 cm x 59 cm), 'Veduta del Romano Campidoglio con Scalinata che va alla Chiesa d'Araceli' (40 cm x 56 cm) and 'Arco di Settimio Severo' (38 cm x 58 cm), each framed and glazed. (Qty: 5) **£2,500-3,500**



- 76 Persian School, 20th century, Imam Ali with his two sons Hasan & Husayn, with companions possibly Qanbar and Salman-i Farsi, all beneath three angels, within a calligraphic running shaped border, of which the left hand side only has an inner border decorated with gilt flowers, the reverse with two partial studies of kneeling figures, image 24.7cm x 18.5cm, overall 26.9cm x 19.3cm **£200-300**



- 77 An Indo Persian red hardstone octagonal pendant in silver metal mount, **£50-80**



Fine Art & Antiques, Thu, 25 November 2021 9:30

- 78 A Japanese keyaki wood hibachi, late 19th century, with rectangular copper liner, above four short drawers, 80cm wide, 35cm high, 55cm deep **£50-80**



- 79 A group of six Japanese hardwood carved netsukes, variously formed as animals, the largest 7 cm wide. (Qty: 6) **£60-100**



- 80 An Eastern white metal gentleman's dress ring with intaglio carved Islamic calligraphy rectangular carnelian(?) panel. **£60-100**



- 81 A possibly Chinese carved rock crystal figure of a fish with engraved detail. 5 cm long x 2.5 cm deep. **£60-100**



- 82 A set of six Chinese Taoist immortals, early 20th century, watercolour, each with red seal mark, 19.5cm x 19.5cm; and a mountain retreat view, watercolour on silk, signed and with chop mark, 30cm x 36.5cm **£60-80**



Fine Art & Antiques, Thu, 25 November 2021 9:30

- 83 A pair of Chinese celadon bottle vases, third quarter 20th century, with Ge type glaze, 36cm, with presentation boxes (Qty: 2) **£60-80**



- 84 An Eastern niello decorated (925) silver and turquoise gentleman's ring set with a single rectangular cushion form stone. **£60-100**



- 85 An Eastern white metal gentleman's ring set with oval cut red stone, mounted with pierced triangular claw settings. **£60-100**



- 86 A Japanese shibayama concertina photograph album, late Meiji, containing fifty hand coloured photographs depicting bijin, dancers, sumo wrestlers, firemen, comical scenes, Yokohama Settlement, View of Matsushima, Kiga Hakone, Kusaga at Nara, Interior of Chioin Kyoto and others, each approximately 9cm x 13.7cm **£70-100**



- 87 A Chinese blue, white and copper red seal paste box and cover, Qing or later, painted with figures before official buildings mounted with a Shou and a river gateway, the base with waves and rockwork, double blue concentric ring to the underside, 7.4cm dia **£70-100**



Fine Art & Antiques, Thu, 25 November 2021 9:30

- 88 An Indo Persian rock crystal figure of a bird, 3.6cm **£70-100**



- 89 An Indo Persian bean shape jade pendant, engraved with a single calligraphic character, 4.9cm. **£70-100**



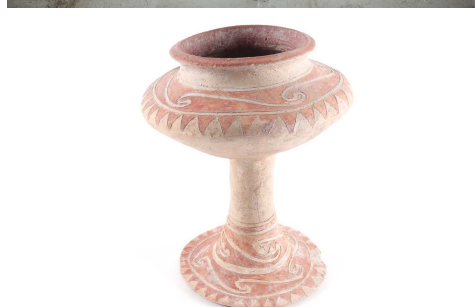
- 90 An Indo Persian white metal and hardstone ring, set with a pale orange onyx hardstone with engraved calligraphy. **£70-100**



- 91 A Chinese hardwood vase stand, early 20th century, the rectangular top with inset grey/white marble panel, on square legs united by stretchers, 41cm wide, 52.5cm high, 31cm deep **£70-100**



- 92 A Thai Neolithic Ban Chiang pottery vessel, the compressed body with a short everted rim and tall waisted stem on a spreading circular base, incised with geometric and scrolling lines picked out in red on a cream slip ground, 26.5cm high **£80-120**



Fine Art & Antiques, Thu, 25 November 2021 9:30

- 93 A 20th-century Chinese large famille rose bowl, the interior and exterior decorated with figures in a landscape, 14 cm high x 30.5 cm diameter. **£80-120**



- 94 A Balinese pottery piggy bank, early 20th century, modelled as a male pig, with brown coloured glaze, 32cm long, 22cm high. Purchased Bali 1995 **£100-150**



- 95 Indian school, a court scene, watercolour, ink and gouache with calligraphic script to the border, 32 cm x 22.5 cm, together with another, a courting couple, 29 cm x 22.5 cm, each framed and glazed. (Qty: 2) **£100-150**



- 96 A carved soapstone figure of Guanyin, on an oval hardwood base, 25.5 cm high. **£100-200**



- 97 An Eastern carved variegated green hardstone scent bottle of trapezoidal section with pommel carved with stylized leaves. 4.5 cm wide x 6 cm high **£100-150**



Fine Art & Antiques, Thu, 25 November 2021 9:30

- 98 Five Japanese netsukes, Meiji/Taisho period, four ivory comprising a Kobe figure playing shamisen, a Noh actor with rotating faces, a man & boy by a screen a young boy verso and a deity, and a stag horn netsuke of a mask maker, all but the stag horn signed, tallest 5cm **£100-150**



- 99 A Chinese yen-yen vase, Qing, 19th century, painted with panels of noble figures and attendants, on a floral ground with birds, 39.8cm **£100-150**



- 100 An Indo Persian white metal and jade pendant, the jaded engraved with two lines of calligraphy, within a white metal mount with shaped suspension ring. **£100-150**



- 101 An Indo Persian red hardstone pendant in silver metal mount, of rounded octagonal shape, engraved with calligraphy, 5.5cm diameter. **£100-200**



- 102 A base metal Indo Persian gentleman's ring, engraved with calligraphic characters **£100-200**



Fine Art & Antiques, Thu, 25 November 2021 9:30

- 103 An Indo Persian hardstone intaglio seal, the square plaque with engraved decoration. **£100-150**



- 104 A modern Indo/Persian gilded steel suspension hook, in the 19th century style, the hook modelled as a swans head on either side of a central square with simple foliate decoration, 6cm **£100-150**



- 105 A Chinese bronze censer, Qing, 19th century, with loop handles above a slightly compressed body on three short feet, poorly cast Xuande mark, 635g, internal diameter 10.5cm, 6.5cm high excluding handles, **£100-170**



- 106 A Chinese double gourd water dropper, 20th century, an applied bat to the circular rim, the yellow & green glazzed body with applied leaves and tendrils, on three ball feet, 14.5cm **£100-150**



- 107 Two Chinese Cizhou vases, the taller vase carved in low relief with two panels of lotus flowers, against a buff ground, the other painted with stylised tendrils, against a buff ground with shaded and graduated bands, 25.5cm & 24cm respectively **£100-150**



Fine Art & Antiques, Thu, 25 November 2021 9:30

- 108 A Persian gold coloured metal gentleman's ring, in the early Qajar style, engraved with calligraphy. **£100-150**



- 109 A large Chinese carved variegated grey hardstone erotic study of an erect phallus with a cicada resting upon it. 25 cm long (!) **£120-180**



- 110 An Eastern white metal gentleman's ring set with a canted rectangular green hardstone panel intaglio cut with a probably devotional verse in Arabic calligraphy, bearing a stamped mark to the interior surface of the shank. 2.2 cm x 1.9 cm the panel **£150-200**



- 111 A large Chinese bronze censer, Qing, of circular form with everted rim, with applied lion mask handles, on three short feet, internal diameter 20.7cm, 15.2cm high **£150-250**



- 112 A Chinese part biscuit porcelain figure of Shoulao, seated holding a manganese and yellow glazed ruyi sceptre, dressed in long robes, 21cm; and a porcelain figure of Budai, in typical seated pose holding a string of beads and a sack of treasures, his cheeks blushed and with painted eyes and lips, impressed mark for Zhu Mou Ji Zuo, 25cm **£150-250**



Fine Art & Antiques, Thu, 25 November 2021 9:30

- 113 Two Chinese porcelain brush washers, modelled as a bat alighting on a peach branch with two fruits on a shaped dish with radiating lines, impressed Qianlong seal mark, 15.5cm dia; and another modelled as a lustrous aubergine glazed Bixie upon a large turquoise leaf, 11.5cm diameter. **£150-250**



- 114 A Safavid carved dark green jade pendant in silver metal mount, of oval form, engraved with calligraphy, with silver metal suspension mount. **£150-250**



- 115 An Indo Persian carnelian-coloured glass beaded prayer necklace, with shaped rounded beads. **£150-250**



- 116 An Indo Persian leaf shaped pendant, finely engraved with calligraphy, 5cm **£150-250**



- 117 An Indo Persian white metal and orange stone ring, the circular stone engraved with calligraphy. **£150-250**



Fine Art & Antiques, Thu, 25 November 2021 9:30

- 118 An Indo Persian rock crystal and white metal pendant, with crown shape suspension ring bearing indistinct marks. **£150-250**



- 119 An Indo Persian dark red gem pendant, engraved with calligraphy, in white metal mount. **£200-300**



- 120 A large Indo Persian green stone pendant in white metal mount, the square stone engraved with three lines of calligraphy, encased in brass, white metal suspension loop. **£200-300**



- 121 A patinated bronze pheasant, 20th century, the plumage heightened with gilding, on a polished black slate base, 26cm high, approx 44cm long **£200-300**



- 122 A Chinese porcelain bitong, late Qing early 20th century, painted with a couple in an interior before a mountainous landscape, red stamped Tongzhi seal mark, 12cm; an aubergine glazed moulded bitong, 20th century, moulded with figures in a mountainous landscape with buildings, boats and pine trees, applied wax Jian Ding, 11.5cm; and a early 19th century style yellow ground bitong, 20th century, with applied decoration of tree rats on fruiting vines in green, white and aubergine glazes, applied was Jian Ding, 11.7cm **£200-300**



Fine Art & Antiques, Thu, 25 November 2021 9:30

- 123 A Chinese porcelain deep sided bowl, six character mark of Xianfeng and possibly of the period, a white rim gives way to a deep blue monochrome ground terminating just before the foot rim, 13.5cm dia, 6.5cm high **£200-300**



- 124 Three Chinese jade seals, a small jade carving of a fish above a pierced basket, a red agate peony pendant, a butterscotch amber pendant and four soapstone seals, one with wood stand, tallest 5.5cm **£200-300**



- 125 A large Chinese blue & white Kangxi style bitong, of cylindrical form, painted with a landscape of two scholars and an attendant before buildings, mountains and a lake, the underside concaved and with a glazed central recess, 20cm dia, 16.8cm high **£200-300**



- 126 Two Chinese jun ware censers and a two eared jar, Yuan/Ming or later, the small censer with a purple splash, on three short splayed legs, 5cm high, the taller censer with a with brown oxide rim, with speckled glaze, on three short legs, 8cm, the jar with two small loop tapering handles/ears, 11.5cm high, internal diameter 10.8cm **£200-300**



- 127 A large Japanese Shigaraki grain jar, Tsubo, early Edo period, the shoulder with incised 'well curb', with natural ash glaze, height 72cm **£200-300**



Fine Art & Antiques, Thu, 25 November 2021 9:30

- 128 An Eastern 18ct yellow gold and carved jadeite seated Buddha pendant. Marked 18K to the loop suspension. 3.5 cm long x 1.5 cm wide **£200-300**



- 129 A probably Indian/Iranian bracelet section mounted with three oval panels within gilt metal mounts the two agate and one rock crystal inscribed with the probably devotional verse in Arabic calligraphy. 15 cm long x 3.3 cm **£200-300**



- 130 A Borneo ironwood Spirit House, 19th century, carved in the shape of a ship, the bowsprit and stern respectively carved as the head and tail of a dragon, on tall turned support with metal housing, 277cm high, 160cm wide **£200-300**



- 131 A pair of Chinese carved pale green Jadeite figures of "Dogs of Fo", 20th century. On mock cloth draped rectangular socles. With carved and pierced hardwood stands. 3.65 grams just the jade 20 cm high **£200-300**



- 132 A probably Persian white metal dress ring set with a circular lapis lazuli panel engraved with Islamic calligraphy. 2.2 cm diameter **£250-350**



Fine Art & Antiques, Thu, 25 November 2021 9:30

- 133 Three Chinese Jian ware 'Hares Fur' tea bowls, Ming and later, each with deep rounded sides, the thick glaze terminating at each unglazed circular foot, 9.2cm - 10cm dia **£250-350**



- 134 A pair of Chinese blue & white baluster form candlesticks, 20th century, painted with Buddhist monks in conversation and meditating, amongst plantain leaves, pine and large boulders, 17.5cm **£250-350**



- 135 A Chinese saucer dish, Guangxu mark and probably of the period, finely painted with a blossoming plum branch and green bamboo leaves, three character Run Tian mark, the underside with four grey bats, 14.7cm dia
The blossoming plum tree and bamboo are often representative of a husband and wife. **£250-350**



- 136 A Chinese aubergine and yellow dragon bowl, the exterior with two incised dragons chasing flaming pearls amongst clouds above a false gadroon border, the interior with Shou symbol, six character Kangxi mark within two concentric circles, 10.5cm dia, 5.1cm high **£300-500**



- 137 A large Chinese porcelain blue & white Kangxi style censer, painted with scholarly figures in a mountainous landscape with buildings and a lake, beneath a band of Buddhist symbols, on three short feet, 25cm dia, 13.3cm high **£300-500**



Fine Art & Antiques, Thu, 25 November 2021 9:30

- 138 A Chinese blue & white ginger jar, Qing, Qianlong period, painted with a continuous landscape of figures, buildings, trees and mountains, beneath a geometric band, two blue concentric rings to the underside, 22cm, with gilt wood stand **£300-500**



- 139 An Indian moss green jade archer's ring yellow metal set with cabochon hardstone flowers and boss motif. 4.6 cm x 3.3 cm **£300-500**



- 140 An Indian pale sage coloured jade seal of cylindrical form with snarling lions head terminal with yellow metal set red hard stone eyes. 8.6 cm long **£300-500**



- 141 A collection of five Tibetan carved agate Dzi beads of turned elliptical form, some with banded and some with "Eye" decoration 6.3 cm long the largest. **£300-400**

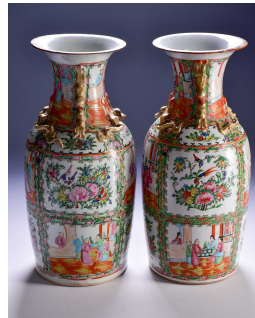


- 142 A large Persian silver gentleman's ring, set with a turquoise coloured stone, a short inscription on the shank. **£300-400**



Fine Art & Antiques, Thu, 25 November 2021 9:30

- 143 A pair of Canton enamel vases, Qing, 19th century, the flared rim above gilt shi-shi handles and chilong, painted with panels of figures, 45.2cm high **£350-550**



- 144 A pair of Chinese carved wood temple lions, Qing, each carved with a paw upon a ball, traces of pigment and gilding throughout, standing on drum form bases, 55cm **£350-450**



- 145 A Japanese Me-No-Shita lacquered iron Menpo, 19th century, with ressei expression, horsehair moustache, the removable nose flanked by L shape odayori-no-kugi, the open mouth showing gilt teeth and a red top lip, the interior red lacquer, with a four layer yodare-kake throat guard, together with Edo period Tati-eri, two Sune-ate and a single Do plate **£350-550**



- 146 A pair of Chinese equestrian funerary figures, Ming Dynasty, one painted black, the other white, the riders with removable heads, one bearded whilst the other clean shaven, the dress and tiger striped saddle cloth picked out in black ink with contrasting details in yellow and red, on rectangular bases, 30cm wide, 34cm high
Purchased from C C Lai, Toronto for \$4900 **£400-600**



- 147 An Indonesian bronze jar and cover, 19th century, with an all over patination of various green hues, the cover formed as a man's head with straight combed hair and large eyes continuing to form the rounded nose, above a stylised foliate rim, the bulbous body with a tall neck embossed with a long and a short arm, 28cm high
Purchased in Bali **£400-600**



Fine Art & Antiques, Thu, 25 November 2021 9:30

- 148 A heavy white metal gentleman's ring set with a claw set oval cut emerald within a border of small diamonds in a gilt metal setting (likely Indian), the shoulders with pierced and shaped inset gold panels, bearing an applied entablature to the interior. **£550-750**



- 149 A large Chinese carved celadon jade Rhyton, possibly late Qing dynasty. In the form of a lotus flower and tied reed with seed pods flowers dragonfly and swallow carved in high relief. Mounted on a carved rosewood cloud strewn mountain form stand. 265 grams. 28 cm high without stand 31 cm high on stand x 20 cm wide. **£1,000-1,500**



- 150 A Chinese Phoenix vase, painted with four archaic Phoenix (Fenghuang) amongst lotus flowers and fronds, a central recessed band painted with lotus flowers and Shou within gilt bands, all between ruyi head and false gadroon bands, bears six character Guangxu mark, 40.5cm high, on later wood stand **£1,200-1,500**



- 151 A long Chinese scroll table, 20th century, possibly huanghuali, with inlaid brass stringing and everted ends, the frieze with moulded edge and scroll motif, supported on square supports united by turned side stretchers, 203 cm long x 46 cm deep x 105 cm overall height **£1,500-2,000**



- 152 An Eastern white metal and black onyx gentleman's ring, the rectangular stone with intaglio cut Islamic calligraphy, the stone measuring approximately 2 cm x 1.4 cm. **£60-100**



Fine Art & Antiques, Thu, 25 November 2021 9:30

- 153 A probably Middle Eastern oval white metal pendant inset with an agate panel carved with a seated gentleman in Arabic headdress in low relief. 6.5 cm long **£60-100**



- 154 A Tibetan white metal blind filigree worked leaf-shaped pendant mounted with a figure of Green Tara set with coral and turquoise. 6 cm high x 5 cm wide. **£60-100**



- 155 A probably Indian white metal spherical hanging pomander, 20th century, with an engraved and pierced exterior the interior fitted with a gimbaled receptacle, suspended on a simple chain with a decorative hook terminal, 5.4cm diameter **£60-100**



- 156 A Persian book page, the text with small illuminations, within a gilt border, 13cm x 8cm, a Persian copper bowl with calligraphic band above panels of flowers, with traces of pigment throughout, 21.5cm dia, a silvr calligraphic stand and bowl; and a Peruvian conquistador cast bronze stirrup, 27cm **£70-100**



- 157 A probably late 19th century Holy Quran with leather-bound spine and sign of marbled boards the laid paper leaves with handwritten black and red Islamic script. 20 cm x 16 cm. Together with one other similar. (Qty: 2) **£100-150**



Fine Art & Antiques, Thu, 25 November 2021 9:30

- 158 A probably early 20th century Holy Quran with handwritten black and red Islamic script within gilt borders, within a tooled red Morocco leather envelope binding. 23.5 cm x 16 cm, together with one other probably 19th century Holy Quran with tooled leather envelope binding. **£100-150**



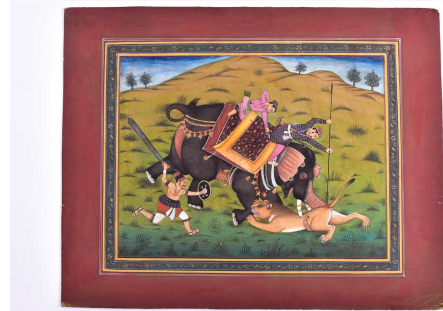
- 159 Indo/Persian school, 20th century, a pair of illuminated book pages, each depicting Persian hunters on horseback and foot, hunting down deer and tigers, with panels of handwritten calligraphy within gilt coloured leaf pendant borders on a dark blue ground, the reverse with calligraphy, gouache and gilding 32,1cm x 23.5cm **£100-150**



- 160 Indian School, circa 1900, an erotic gouache painting of a king embracing his mistresses wearing jewellery, from a Book of Kamasutra, 19.8cm x 27cm **£150-250**



- 161 Indian school, 20th century, Raja Ram Singh spearing a tiger from the back of an elephant, an archer behind him whilst a huntsman runs alongside brandishing an oversized sword and small dhal, within a floral running and gilt borders, gouache heightened with silver, overall 28.3cm x 35.6cm **£150-250**



- 162 An Ottoman-style baluster form gilt brass coffee pot, with star and crescent finial to the hinged domed cover and simple loop handle. The body with chased minaret and scroll decoration, on a spreading circular foot. **£150-200**



Fine Art & Antiques, Thu, 25 November 2021 9:30

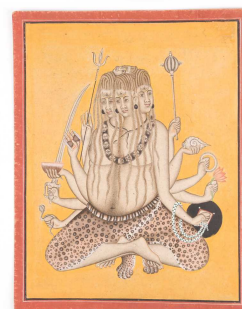
- 163 A Persian heavy steel padlock, Qajar Dynasty. Profusely engraved with Arabic text and islimi decoration to the barrel and shackle with a hidden sliding mechanism. 9.5 cm wide x 12 cm high **£150-250**



- 164 A Persian (Bokhara) brass coffee pot, Qajar Dynasty, With hinged domed cover, short angles spout, the body of flattened baluster form with a central lozenge and bands of Khorasan style vines on a spreading circular foot. 32 cm high **£150-250**



- 165 Indian School, Harihara as Sadashiva, late 19th/20th century, a gilt crescent beneath each third eye, principally pen and coloured inks, on paper/card, overall 25.9cm x 20.3cm **£200-300**



- 166 Indo/Persian school, 20th century, portrait of a bearded man, pen and ink, laid onto card, image including borders 17cm x 11.7cm, overall 29.9cm x 21cm **£200-300**

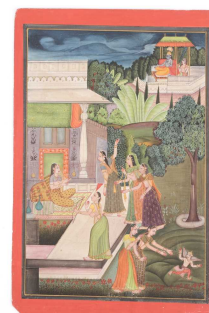


- 167 Indian school, 19th century, portrait of a Marahaja, seated in a plain interior, barefoot with fashioned facial hair and dressed in opulent clothing, with two swords and resting on ornate plump cushions, gouache with gilding, 32.5cm x 25.5cm **£200-300**



Fine Art & Antiques, Thu, 25 November 2021 9:30

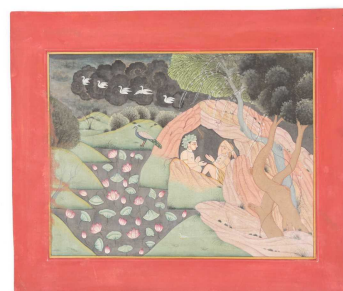
- 168 Indian School, Rajasthani, 'The Estrangement of Radha', her attendants encouraging her to meet with Krishna, the god of love being pursued by two attendants, gouache and watercolour heightened with gilding, within coloured borders, 33.7cm x 22.2cm **£200-300**



- 169 Indo/Persian school, a full length standing profile portrait of a dark skinned Shah, finely dressed with blue and white striped trousers and a floral sash, with gilt nimbus, blossoming flowers around his feet, within a gilt speckled black ground and red border, the reverse with hand written ink calligraphy, 28cm x 19cm **£200-300**



- 170 Indian school, a Ramayana scene, Rama pining after Sita being comforted by Lakshmana in a forest cave, at night with five flying geese and a pond full of lotus flowers, within a red border, the reverse with faded lines of calligraphy, watercolour with some gilt, 19.5cm x 23.2cm **£200-300**



- 171 An Indo Persian hardstone pendant in yellow metal mount, the stone finely engraved with calligraphy, the suspension loop marked 750. (untested) **£200-300**



- 172 An Indo Persian portrait of a Safavid Prince, kneeling in an ornate gilt robe with coloured scrolling leaves, a hawk picking at his gloved right hand, 21.2cm x 15.2cm **£200-300**

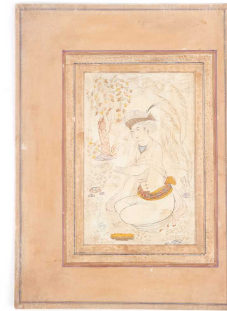


Fine Art & Antiques, Thu, 25 November 2021 9:30

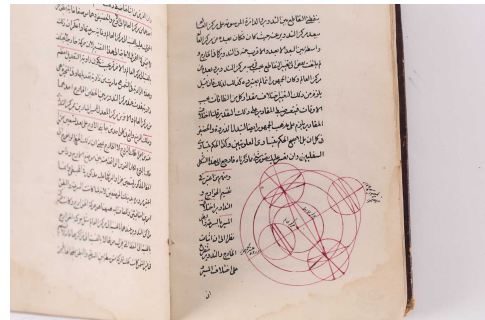
- 173 An Indo Persian hardstone pendant in silver metal mount, engraved with lines of calligraphy, with two leaf shape suspension mounts, stone 4.5cm diameter. **£300-400**



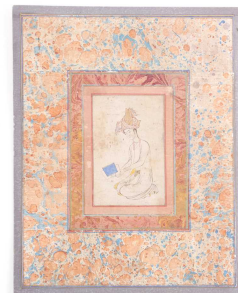
- 174 Mughal school, 19th century, a nim qalam pen and coloured ink Prince in a garden, kneeling whilst dropping water upon a plant, before a blue and white ewer and dish of food, a gilt tree behind him, within a double running border of gilt foliage, speckles and coloured ink bands, mounted on card, image including borders, 20.3cm x 14.5cm, overall 28.5cm x 20.4cm **£300-400**



- 175 A Persian leather-bound volume relating to astronomy and geometry of the planets, possibly late Qajar Dynasty. The pages bearing diagrams and handwritten script. 18 cm x 11 cm. **£300-500**



- 176 A Mughal school watercolour study of a young gentleman in an elaborate turban reading a book, 19th century. Possibly depicting a young Shah Tahmasp, on a marbled contemporary card mount and within ruled borders. 31 cm x 24.5 cm **£300-400**



- 177 A Persian Dervish's Coco de Mer Kashkul, Qajar Dynasty, carved with bands and panels of Islamic calligraphy and the figure of a dervish, with decorative chain mounts. **£400-600**



Fine Art & Antiques, Thu, 25 November 2021 9:30

- 178 A probably Persian white metal gentleman's ring set with a circular bloodstone(?) panel engraved in the round with Arabic calligraphy. 3.4 cm diameter **£400-600**



- 179 Four similar 20th-century brick red ground Turkoman Chuval (bedding bags). With simple bands of geometric supplemental weft decoration one bag retaining its woven hanging strap. Approx 115 cm x 82 cm each (Qty: 4) **£60-100**



- 180 An early 20th-century crimson red ground Turkish rug with an open field within a gul firangi meandering border. 210 cm x 125 cm **£100-150**



- 181 A 20th-century oatmeal ground figural jajim rug with stylized animals and plants within a geometric tile border. 190 cm x 98 cm
Formerly acquired from Harvey Nicholls **£100-150**



- 182 A 20th century yellow/ ochre ground Turkish kelim runner with stepped and hooked diamond lozenges. 298 cm x 84 cm together with one other brightly coloured Turkish kelim (Qty: 2)
Formerly acquired from Harvey Nicholls **£100-150**



Fine Art & Antiques, Thu, 25 November 2021 9:30

- 183 A collection of decorative Swahili Kikoi (African cotton wraps)
(Qty: 13) **£100-120**



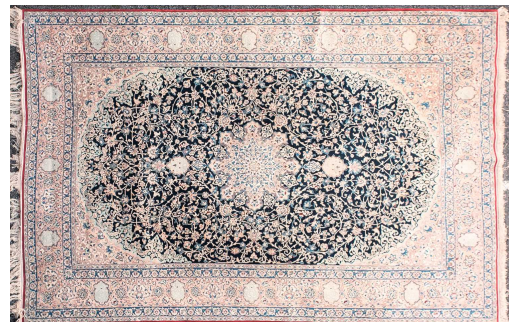
- 184 An African Kuba textile panel and other African textiles. 63 cm x 53 cm the Kuba cloth.
Formerly acquired from Harvey Nicholls **£100-150**



- 185 An antique Turkish rust-red ground silk mat with a central lozenge with ivory floral borders. 65 cm x 48 cm
Formerly acquired from Harvey Nicholls **£200-300**



- 186 A 20th-century dark blue ground Kashan carpet with central medallion, lanterns and corners. Within meandering floral borders. 380 cm approx x 245 cm approx **£300-400**



- 187 A pair of 19th-century plain-woven tribal jajims and a small Turkish soumak worked rug and one other an old Turkish piled mat 130 cm x 110 cm the largest
Formerly acquired from Harvey Nicholls **£100-150**



Fine Art & Antiques, Thu, 25 November 2021 9:30

- 188 A 20th-century ivory ground Kashan carpet with a central field of scrolling Islimi within floral borders. 428 cm x 290 cm **£700-800**



- 189 A 20th-century blue ground Turkish prayer rug with a slightly arched single mihrab within shrub filled ivory borders with gathered fringes. 167 cm x 116 cm
Formerly acquired from Harvey Nicholls **£100-150**



- 190 A collection of decorative Swahili Kikoi (African cotton wraps) (Qty: 13) **£100-120**



- 191 A 20th-century tribal bedding/pillow bag with soumak worked banded decoration. Together with a small Turkish soumak worked rug. 110 cm x 65 cm the bag
Formerly acquired from Harvey Nicholls **£100-150**



- 192 An old red ground Kazak rug with three-star for lozenges on a field of geometric device. Within rosette borders **£100-150**



Fine Art & Antiques, Thu, 25 November 2021 9:30

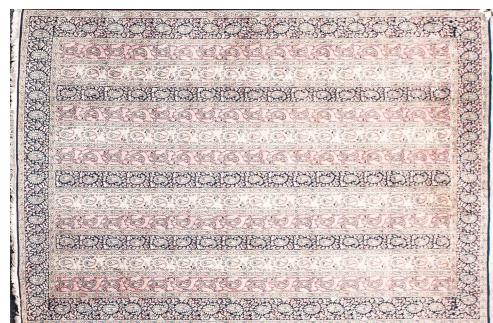
- 193 A 20th century tribal bedding bag and one other. 146 cm x 80 cm the larger of the two.
Formerly acquired from Harvey Nicholls **£150-200**



- 194 A 19th century Small muted red ground bag face/ trapping panel with stepped geometric guls. 72 cm x 30 cm, together with a 19th century probably Belouch bagface with soumak worked crab bands and a pair of brightly coloured Turkoman soumak worked mats. (Qty: 4)
Formerly acquired from Harvey Nicholls **£150-200**



- 195 A Kashmiri silk carpet with striped boteh filled ground within floral borders. 307 cm x 210 cm **£200-300**



- 196 North West Persian blue ground long rug/ carpet runner with all over "Herat" trellis pattern within geometric leaf borders. 400 cm x 120 cm **£250-350**



- 197 A 20th-century blue ground small Iranian Kelim rug with zigzag alternating ground and flowerhead border with supplemental weft detail barbers pole edge. 131 cm x 128 cm **£100-150**



Fine Art & Antiques, Thu, 25 November 2021 9:30

- 198 A 20th-century Indigo blue ground Kashan carpet, with central polylobate medallion and broad ivory Islimi borders. 330 cm x 215 cm **£300-400**



- 199 A 20th-century ivory ground Aubusson style tapestry carpet with central floral motif and within neo-classical borders. 356 cm x 282 cm **£300-500**



- 200 A 20th-century red ground Kashan carpet, with a central medallion within meandering borders. 346 cm x 270 cm **£400-500**



- 201 A 20th century ivory ground Aubusson style tapestry carpet with a central spray of roses within a scroll border. 287 cm x 185 cm **£300-500**



- 202 A large 20th-century Caucasian brick red ground Soumak carpet with large geometric star lozenges in tones of blue within broad borders. 390 cm x 218 cm **£300-400**



Fine Art & Antiques, Thu, 25 November 2021 9:30

- 203 A 20th-century red ground Caucasian Soumak carpet with large cross form star lozenges within saw tooth and running dog borders. 395 cm x 247 cm
Formerly acquired from Harvey Nicholls **£300-400**



- 204 A Late 19th century/early 20th-century "Suruhan Garden" Shirvan rug with four rectangular medallions on a central pole on a ground of geometric device. Within wine glass and calyx borders. 225 cm x 120 cm
For a very similar example see the late Ian Bennett's book, Oriental Rugs Vol1 Caucasian, page 223. **£400-600**



- 205 A late 19th century/ early 20th-century dark blue ground Caucasian possibly Gendje carpet runner. With an all-over pattern of geometric tile pattern within a knopped wine glass and calyx border. 363 cm x 104 cm **£400-500**



- 206 An early 20th century probably Bidjar carpet with ivory ground filled with all-over compartmentalized design within broad brick red "turtle borders". 274 cm x 200 cm **£400-600**



- 207 A 20th-century red ground Heriz carpet. With a central geometric star, within a leaf and flower border. 375 cm x 263 cm **£400-500**



Fine Art & Antiques, Thu, 25 November 2021 9:30

- 208 A fine late 19th century /early 20th-century plum red ground silk Isfahan rug, with central barbed medallion, hanging lanterns and cornucopia. Within open scrolling borders. 180 cm x 127 cm. **£1,500-2,000**



- 209 A Louis XV style mahogany cartouch topped bijouterie table. With gilt metal mounts throughout. On slender shaped supports. 60 cm x 41 cm x 73 cm high. Formerly acquired from Harvey Nicholls **£100-150**



- 210 A French Regency style walnut open armchair, 19th century, with arched square back, swept moulded arms, stuff over upholstered back and seat on turned supports united by a cross stretcher. 54 cm wide x 68 cm deep x 104 cm high. **£60-80**



- 211 An Edwards and Roberts tulipwood crossbanded quarter cut oak kneehole writing desk, with leather inset inverted break front top, fitted six pedestal drawers and two frieze drawers (one drawer missing). Stamped to the leading edge of the drawer Edwards & Roberts and numbered 68732. 144 cm long x 64 cm deep x 77 cm high to the top x 60 cm knee room **£100-200**



- 212 A George III mahogany chest on chest, The upper section with dentil moulding, canted and fluted corners and two short over three long drawers. The base with a further three long drawers. On high, shaped bracket feet. 114 cm wide x 51 cm deep x 191 cm high overall. **£250-300**



Fine Art & Antiques, Thu, 25 November 2021 9:30

- 213 A George IV style mahogany gallery top rectangular urn table, early 20th century., with turned simulated bamboo supports united by an "X" stretcher. 41 cm wide x 31.5 cm deep x 79 cm overall height, together with a rattan effect butlers tray and folding stand. 61 cm wide x 42 cm long x 72 cm overall height. (Qty: 2) **£100-150**



- 214 A pair of 'Slingsby- Ladders' stained pine library/shopkeeper's steps with close nailed the leather-covered top and shaped steadying handle, bearing an inset ivorine trade plaque to each side. 170 cm overall height x 91 cm high to the top step x 36 cm deep x 73 cm wide
Private collection. **£100-150**



- 215 A late Victorian mahogany desk chair with moulded seat and leather upholstered back. 57 cm wide x 96 cm high overall. 45 cm high to the seat
Private collection. **£150-250**



- 216 A 19th-century French parcel-gilt mahogany tied reed bed coronet with floral wreath mantle. Draped with green/blue shot silk effect fabric. 64 cm wide.the coronet x 250 cm approx length of the drape **£150-200**



- 217 An early 20th century inlaid mahogany display cabinet. With a pair of leaded glazed doors on shaped cabriole supports. 106 cm overall width x 39 cm overall depth x 165 cm overall height. **£50-80**



Fine Art & Antiques, Thu, 25 November 2021 9:30

- 218 A pair of George III style mahogany tray topped night cupboards, each with a tambour closure and pull-out bottom drawer with a leathered surface. 57 cm wide x 46 cm deep x 74 cm (Qty: 2) **£150-200**



- 219 An Edwardian marquetry inlaid pale rosewood ladies Bonheur de Jour in the style of Edwards & Roberts with single frieze and two deep flanking drawers on square tapering supports terminating in swivel castors. 91 cm wide x 51 cm deep x 94 cm overall height, 63 cm knee height. **£150-200**



- 220 An Edwardian marquetry inlaid mahogany scroll end salon settee in the manner of Edwards & Roberts, with deep buttoned stuff over the upholstery and on square, tapering supports with spade feet terminating in brass swivel castors. 150 overall width x 71 cm overall depth x 75 cm overall height. 46 cm height to the seat **£150-200**



- 221 A Charles II walnut Daniel Marrot type side chair with arched cresting, split cane panel back and seat on a turned and carved scroll base. 120 cm overall height x 48 cm wide x 41 cm high to the seat. Together with another Charles II walnut side chair with split cane back and seat. **£150-200**



- 222 A George III mahogany tray topped night cupboard, with a pair of crossbanded doors and a single deep drawer. 55.5 cm wide x 49 cm deep x 83 cm high overall. Together with a George IV mahogany pedestal night cupboard. **£150-200**



Fine Art & Antiques, Thu, 25 November 2021 9:30

- 223 An early 18th-century oak single drawer lowboy, with thumb, moulded planked top over a single frieze drawer on simple tapering spindle frame united by a box stretcher on turned tulip feet 80 cm wide x 50 cm deep x 69.5 high overall. **£150-250**



- 224 A Waring & Gillow George VI limed oak coronation stool designed by Edward Barnsley, bearing a George VI royal households brand and stamped Waring & Gillow, together with an Arts and Crafts style lattice back low armchair with rush seat. (Qty: 2) **£150-200**



- 225 A large corn crusher, late 19th - early 20th century, of upright rectangular form, the wood panel inset with hundreds of flint chips, with a plain curved top section, 190cm high, 120cm wide **£200-300**



- 226 A George III mahogany chest on chest. With dentil moulding above two short over three long drawers, the base with a further two long drawers. Supported on shaped bracket supports. 117 cm wide x 59 cm deep x 172 cm high **£200-300**



- 227 A Charles Eames Ottoman for Herman Miller manufactured by Hille of London Ltd. With black buttoned leather upholstery and laminated Zebrano body on a cast aluminium base. Bearing Herman Miller/ Hille trade label to the underside. 66 cm wide x 56 cm deep x 40 cm overall height **£200-300**



Fine Art & Antiques, Thu, 25 November 2021 9:30

- 228 A Regency figured mahogany chiffonier, with three quarter gallery top above a pair of figured panel doors, on turned and reeded toupe feet. 116 cm wide x 38 cm deep x 108 cm overall height x 89 cm high to the deck **£200-300**



- 229 In the manner of Ralph Turnbull, a 19th-century probably West Indian colonial made Figured rosewood circular snap top pillar table, the circular top is inlaid with a radiating parquet flower head in coconut palm, West Indian satinwood, bitter wood and other native timbers, on a plain panelled tapering stem over a "Trafalgar" type base with carved bun feet. 51 cm diameter **£200-300**



- 230 An Edwardian mahogany Bonheur du Jour with small drawers and pigeon holes above a leathered top, the base with a single frieze drawer and a further three flanking drawers, on square, tapering supports united by a three-quarter stretcher and the legs terminating in brass swivel casters. 107 cm wide x 55 cm deep x 96 cm overall height. 59 cm knee height, together with a probably American mahogany "Horseshoe" backed desk chair with leather-covered top rail and saddled seat. 56 cm overall width x 41 cm high to the seat. **£200-250**



- 231 In the manner of Willy Daro (Belgian) a bronze and plate glass circular coffee table in the form of a gnarled, leafy tree stump supporting the circular glass top. 94 cm diameter x 47 cm high. **£200-300**



- 232 A 20th-century red deep button upholstered 'Chesterfield' armchair with close nailed detail and fitted loose cushion, on squared supports. 7x 7 cm overall width x 82 cm overall depth x 72 cm overall height. 48 cm high to the seat. Private collection. **£200-300**



Fine Art & Antiques, Thu, 25 November 2021 9:30

- 233 A Danish Peter Sorensen 'PS' modular teak wall system, 1960s, comprising four uprights, four assorted cupboards and a drawer unit, with fittings. **£300-400**



- 234 A George III mahogany kneehole dressing chest, the frieze drawer with adjustable writing surface and small drawers. Above central recessed cupboard door flanked by further small drawers. On shaped bracket feet. 102 cm x 58 cm deep x 86 cm overall height. 67 cm knee room below top drawer **£300-400**



- 235 An 18th-century German burr elm serpentine fronted three-drawer commode chest, 68 cm high. **£300-500**



- 236 A 19th century probably American 'Empire' style mahogany scroll end sofa, with carved stuff over upholstered show frame, on bold winged lions paw feet. 194 cm overall length x 82 cm overall height x 63 cm overall depth. 48 cm high to the seat. **£300-400**



- 237 A George III mahogany bureau bookcase. The upper section with a pair of figured panel doors with candle slides below. The fall opening to reveal a fitted interior above two short over two long drawers. Supported on shaped ogee bracket feet. 110 cm overall width x 60 cm deep x 205 cm overall height. 75 cm high to the fall. **£300-400**



Fine Art & Antiques, Thu, 25 November 2021 9:30

- 238 A French Empire style marble-topped mahogany commode a vantaux. Fitted a central with brass inlaid cupboard door flanked by a pair of narrow cupboards with gilt metal mounts to the doors and the extended canted corners. 131 cm overall width x 60 cm overall depth x 88 cm overall height. **£400-500**



- 239 A 19th century French Empire brass inlaid ebonized and mahogany inverted breakfront bureau kneehole desk, with leathered top fitted three frieze drawers and each pedestal with a further three short drawers and central cupboard flanked by brass inlaid fluted pillars, supported on turned feet. 142 cm wide x 65 cm deep x 82 cm overall height. 67 cm knee height. (Qty: 1) **£400-800**



- 240 An early 18th-century oak and walnut chest on stand The upper section with two short over three long drawers. The kneehole base with a further three small drawers. On four squat cabriole supports. 100 cm wide x 57 cm deep x 149 cm **£400-500**



- 241 A George III Gillows of Lancaster mahogany kneehole library/dressing table. With curved and recessed inverted breakfront. Fitted one frieze and four short flanking drawers. On typically turned cluster column legs with brass socket swivel castors. Stamped "Gillows Lancaster to the leading edge of the drawer front. 135 cm overall width x 62 cm deep x 85 cm overall height x 81 cm high to the top. 67 cm knee room **£1,000-1,500**

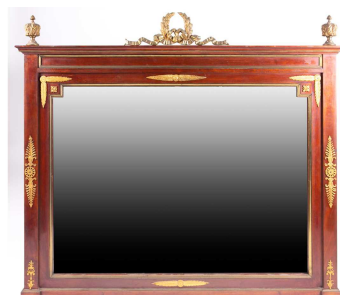


- 242 A Charles Eames for Herman Miller lounge armchair, with tan buttoned hide and laminated Zebrano body over an aluminium base. Bearing a Herman Miller trade label to the underside. 83 cm overall width x 79 cm overall height x 40 cm to the lip of the seat. **£1,200-1,500**



Fine Art & Antiques, Thu, 25 November 2021 9:30

- 243 A French Empire style gilt metal mounted wall mirror, 20th century. With wreath surmount and flat pilasters. 122 cm wide x 107 cm high. **£150-200**



- 244 A George III mahogany scroll framed wall mirror, with carved pierced and gilt "HoHo" bird cresting. Fitted a bevelled mirror plate. 53 cm overall width x 93 cm overall height. **£200-300**



- 245 An Art Deco style gilt brass hanging electrolier. The geometric star-shaped frame with conical acid-etched diffuser with squared rod supports. 44 cm approx diameter x 64 cm approx height/length **£100-150**



- 246 A pair of French Empire gilt and lacquered "Sphinx" brass wall sconces with frosted glass globe diffusers. Fitted as faux gas mantles. 30 cm long. Together with A classical Greek table lamp in the form of an ancient libation tripod and a Victorian style hanging pendant lamp with acid-etched graduated cranberry shade together with one similar shade. (Qty: 5) **£100-150**



- 247 An Arts & Crafts style hammered brass hanging ceiling lantern of trumpet form with faux planished and iridescent glass shade. 37 cm overall length x 17.5 cm diameter **£100-150**



Fine Art & Antiques, Thu, 25 November 2021 9:30

- 248 A French Empire style gilt brass and Japaned iron six sconce electrolier. Each branch with a faux candle fitting, supported by decorative suspension chains and anthemion upper terminal. 61 cm approx diameter x 50 cm approx height **£100-150**



- 249 A French Empire style gilt bronze and Japaned iron hanging colza style three sconce electrolier. with draped swags and female sphinx. Fitted with acid frosted shades 53 cm approx diameter x 82 cm approx height/ length **£200-300**



- 250 A 1970s "Hollywood Regency" gilt metal uplighter standard lamp, probably by Lancia of Italy. The tubular column with applied bullrushes and swans in flight. Mounted on a turned black veined travertine base. **£200-300**



- 251 An early to mid-20th century brass ceiling lampshade, Art Nouveau in style with opaline glass panels, 39 cm high (excluding chain) x 19.5 cm wide. **£300-400**



- 252 An early 20th-century onyx plaffionier, with three moulded loops to the exterior, 47 cm diameter, the bowl 17 cm high **£300-400**



Fine Art & Antiques, Thu, 25 November 2021 9:30

- 253 A 'Tiffany Studios New York' seven-lamp glass 'Lily' table lamp, the purple opalescent shades formed as partially-opened flower heads, supported on a cast metal base with further opalescent glass lozenges to the border, impressed stamp to underside, 62 cm high. **£2,000-3,000**



- 254 In the manner of Franz Bergman. An early 20th century Austrian cold painted bronze figure group of hounds pursuing and pulling down a stag. Apparently unmarked. 14 cm long x 8 cm high **£200-300**



- 255 Clare Trenchard, a life-size cold-cast bronzed figure of a seated Great Dane, 115 cm overall height x 114 cm footprint of the base **£300-500**



- 256 A large and impressive Warwick style bronze vase/jardiniere, of oval form with removable brass liner, the gadrooned rim over a high-relief patinated bronze frieze depicting Classical figures, the twin handles formed as pipe-playing children, on a stepped oval base, 39 cm high x 43 cm wide. **£300-500**



- 257 A pair of large Indonesian Loro Blonyo, early 20th century, the weathered wood carved to the flat sides with figures, 203cm high, 23cm wide
Placed outside of the home, used as guardians **£300-400**



Fine Art & Antiques, Thu, 25 November 2021 9:30

- 258 A pair of 19th century patinated bronze figures of Mercury and Fortuna, each standing aloft a gust of wind from the mouth of Zephyr, on a stepped circular base, 48 cm high. (Qty: 2) **£400-600**



- 259 A 19th century burr walnut dressing table box, with brass stringing and mounts, the interior with removable leather tray, 30cm wide **£100-150**



- 260 A 19th-century rosewood toiletry box, the velvet-lined interior with silver-plated topped jars and boxes, with lower silk-lined drawer, 17.5 cm high x 30.5 cm x 23 cm. **£150-250**



- 261 An 18th-century oak nautical capstan hub, now with a copper liner to form an impressive bowl. 46 cm diameter x 26 cm high **£70-100**



- 262 Early 19th-century school, a portrait miniature on ivory, a smartly dressed lady in a blue shawl, 9 cm x 7 cm, glazed in a gilt frame. **£200-300**



Fine Art & Antiques, Thu, 25 November 2021 9:30

- 263 19th century Greek school, a portrait of Christ, tempera on board, with silver and silver gilt oklad, 38 cm x 27.8 cm. **£300-500**



- 264 A 17th-century portrait miniature of Admiral Van Tromp, in an Asprey leather easel back frame, 10.5 cm x 8.4 cm (full dimensions). **£300-500**



- 265 An early 20th-century Duverdry & Bloquel novelty miniature longcase clock. With brass broken arch dial and oak case. 43 cm high. Together with a Black Forrest carved mantle clock with eagle surmount. 57 cm high **£100-150**



- 266 A Bonnett & Pottier Art Nouveau 8-day mantle clock, with an architectural arched case with bronze appliques. 39 cm high x 26 cm wide x 12 cm deep **£200-300**



- 267 A Bueche Girod gilt metal dressing table clock, of temple form, the suspended circular dial with swivel movement, 10.3 cm high x 10 cm wide, together with two 1960s Bueche Girod gilt metal dressing table clocks, of square form with engine turned decoration. (Qty: 3) **£200-300**



Fine Art & Antiques, Thu, 25 November 2021 9:30

- 268 A late 18th century 8-day longcase clock. The white painted broken arch (un-named) painted dial with floral spandrels and painted with a Bishop and gartered sheep to the arch. The mahogany case with swan neck pediment, long trunk door and on bracket feet. 2.2 meters high. 29 cm/ 11" dial **£200-300**



- 269 R.R. Harper of London, An late 19th century 8-day single fusee work's master wall timepiece. The mahogany case with a full-length glazed door. 100 cm high x 58 cm wide x 21 cm deep. 31 cm diameter dial **£200-300**



- 270 A French early 20th century 8 day eight glass champleve and gilt brass (silver medal) mantle clock. The lozenge section case with figured onyx panels. The dial marked in Arabic numerals, it and the mercury compensating pendulum are set with paste gems. **£300-500**



- 271 Twelve bottles of 1973 Chateau Moulin de Segur Graves, in original carton. **£80-120**



- 272 Twelve bottles of 1971 Vouvray Le Haut Lieu, in original carton. **£80-120**



Fine Art & Antiques, Thu, 25 November 2021 9:30

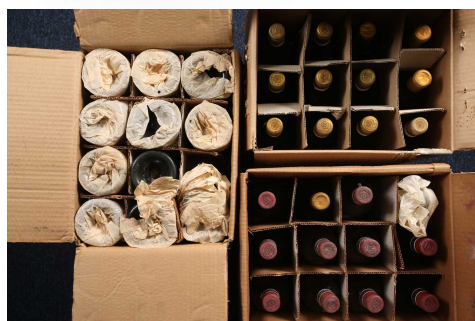
- 273 Twelve bottles of Australian Pirramimma 1971 Shiraz Dry Red wine, A C Johnston. **£80-120**



- 274 Twelve bottles of 1971 Vouvray Le Haut Lieu, in original carton. **£80-120**



- 275 Thirty-six bottles of mixed table wine, 1950s and later. **£80-120**



- 276 Eighteen bottles of Petaluma Rhine Riesling, (six dated 1979, the remainder in a sealed wooden case, but presumed the same). **£100-200**



- 277 Warre's Vintage Port, two bottles: 1963 and 1977. Private collection. **£100-150**



Fine Art & Antiques, Thu, 25 November 2021 9:30

- 278 Nine bottles of 1968 Tulloch Pokolbin Dry Red, Private Bin.
(Qty: 9) **£100-200**



- 279 W & J Grahams, Malvedos 1995, vintage port x 4 bottles. (Qty: 4)
Private collection. **£100-150**



- 280 Graham's 1977 vintage port, two bottles. (Qty: 2)
Private collection. **£100-150**



- 281 Eighteen bottles of 1971 Vouvray Le Haut Lieu, in original cartons (one with partial contents). **£120-180**



- 282 Twenty Four bottles of Petaluma Rhine Riesling, presumed 1979, both OWC. (Qty: 2) **£150-250**



Fine Art & Antiques, Thu, 25 November 2021 9:30

- 283 Fonseca Guimaraens Reserve, 1962 Vintage Port (x 1 bottle), together with a further Fonseca 1977 Vintage Port. (Qty: 2)
Private collection. **£150-250**



- 284 Twelve bottles of Chivas Regal Blended Scotch Whisky, each in original carton and with outer case. **£150-250**



- 285 A bottle of 1953 Reserva Boal Madeira, together with a 1977 Dow's Silver Jubilee Vintage Port, a Porto Calem Quinta da Foz Vintage 1980 Port and an unlabelled bottle, presumed vintage Port. (Qty: 4)
Private collection. **£150-250**



- 286 Five bottles of Vintage Port: Gould Campbell 1977, Taylor's '20 Years Old', Sandeman 1963, Martinez Late Bottle Vintage 1994 and Smith Woodhouse & Co 1977. (Qty: 5)
Private collection. **£150-250**



- 287 Twelve bottles of 1976 Perrier-Jouet Champagne, in original boxes with outer case. **£150-250**



Fine Art & Antiques, Thu, 25 November 2021 9:30

- 288 Chateau Beychevelle, 2005, six bottles, unopened OWC.
Private collection. **£200-300**



- 289 Fifteen bottles of mixed table wine, vintage port and dessert wine. (Qty: 15)
Private collection. **£200-300**



- 290 Three bottles of 1989 Chateau Lynch Bages Pauillac. (Qty: 3)
Private collection. **£250-350**



- 291 Chateau Cantemerle, Haut-Medoc, 2005, twelve bottles, unopened OWC.
Private collection. **£300-500**



- 292 Chateau Lynch Bages, Pauillac 2005, six bottles, OWC.
Private collection. **£400-600**



Fine Art & Antiques, Thu, 25 November 2021 9:30

- 293 Chateau Lynch Bages, Pauillac 2007, twelve bottles, unopened OWC.
Private collection. **£600-800**



- 294 Chateau Lynch Bages, Pauillac 1996, twelve bottles, unopened OWC.
Private collection. **£1,000-1,500**



- 295 Chateau Lynch Bages, Pauillac 1998, twelve bottles, unopened OWC.
Private collection. **£1,000-1,500**



- 296 Chateau Haut-Brion Cru Classé des Graves Pessac Leognan, 1994, twelve bottles, in shipping case.
Private collection. **£1,000-1,500**



- 297 A Victorian Rifle regiment officers sword, 1827 pattern, with etched single fullered blade, the plated hilt with shagreen grip, in polished steel scabbard, the blade 83 cm, 100 cm overall
£120-180



Fine Art & Antiques, Thu, 25 November 2021 9:30

- 298 A Wilkinson Sword 1897 pattern Zambian army officers dress sword and scabbard, the tooled blade bearing the legend 'One Zambia One Nation', the pierced hilt with leather portepee. 102 cm overall length. **£150-200**



- 299 A collection of 19th century turned lignum vitae and turned bone desk seals, a late 19th century bronze eagle claw and ball seal, and a Georgian steel fob seal, the tallest with matrix for 'T Bowyer, Buckden, Huntingdonshire 2.5cm - 9.5cm (Qty: 11)
Save **£60-80**



- 300 Two 19th century carved ivory desk seals, carved as Dr. Syntax and Tom Ponce, Dr Syntax seal matrix initialled GC, and Tom Ponce white metal matrix initialled MK, 5.3cm & 9.3cm
Save **£100-150**



- 301 The Rolling Stones, a signed double LP, 'Exile On Main Street', bearing the signatures 'To Graham', of Mick Jagger, Keith Richards, Mick Taylor, Charlie Watts and Bill Wyman to one inner sleeve, and on the reverse of the outer cover, 'To Graham, from your pal Billy Preston', the album to include twelve promotional postcard inserts.
Provenance: Private collection, purchased from a Cheshire auction house in 2014. No certification or written provenance is available. **£500-700**



- 302 A 20th-century Negretti & Zambra Marine/ Fortin type Air Ministry mercurial barometer with gimbaled lacquered brass case. Numbered M4465/44/57/60/65. 89 high the actual barometer.
Private collection. **£150-250**



Fine Art & Antiques, Thu, 25 November 2021 9:30

- 303 A 20th-century Negretti Zambra of London sunshine recorder with black japanned iron and brass stand and fittings with a polished optical glass sphere, serial number NZ40577 22 cm high x 18 cm wide **£300-400**



- 304 A small collection of 19th /20th-century lace fragments and a ladies black lace jacket and fan, gloves and other items. **£80-120**



- 305 A collection of sixteen native American carved moose antler miniature skulls. The largest 26mm high, the smallest 13 mm high. **£100-200**



- 306 A 19th century porcelain trefoil snuff box, decorated with landscapes, 4.3 cm high, together with a carved ivory snuff bottle and cover, a malachite snuff bottle (no cover) and a French oval portrait miniature of a lady, in brass easel frame. (Qty: 4) **£100-150**



- 307 A Dutch silver hinge-lidded trinket box, of lobed form with embossed decoration, 6.5 cm wide (90g), together with seven matchbox covers of varying design, and a Dresden porcelain pedlar figure, 19 cm. (Qty: 9) **£100-150**



Fine Art & Antiques, Thu, 25 November 2021 9:30

- 308 A BP (British Petroleum) plastic forecourt illuminated advertising totem/ sign together with a BP "Air & Water" forecourt sign. 95 cm diameter the totem **£150-200**



- 309 A 20th century native American carved moose antler skull and dolphin pendant together with two similar, a wild boar, eagles head, tribal chief's head antler pendants and a horned skull miniature carving. 40 mm x 50 mm the largest item, the Chief's head. (Qty: 7) **£100-150**



- 310 A 20th century native American carved moose antler miniature skeleton pendant together with four others of varying size. Together with carved moose antler winged dragon pendant and a natural section moose. wolf and wild horse pendant. 11 cm high the largest skeleton **£100-150**



- 311 A boxed Wilesco Dampftraktor live steam traction engine (D40) together with a boxed Wilesco lumber wagon and two boxed Mamod workshop units (WS1) **£100-150**



- 312 A boxed Mamod live steam roller (SR1A) steam roller, together with one other boxed. **£100-200**



Fine Art & Antiques, Thu, 25 November 2021 9:30

- 313 A boxed Mamod steam tractor (TE1A) together with a boxed Mamod open wagon and a boxed lumber wagon (Qty: 3) **£100-150**



- 314 A Waterman fountain pen, in lustrated metal case, together with a leather pen case and a collection of further fountain and ballpoint pens, to include Parker, and a quantity of boxed Waterman ink cartridges. **£100-150**



- 315 A late 19th century Swiss rosewood and inlaid music box, playing eight airs on a single cylinder, 12 cm high x 35.5 cm wide. **£150-250**



- 316 A collection of items relating to the last British Airways Concorde flight, to include commemorative prints, brochures, souvenirs and a model of the aircraft. **£150-250**



- 317 A Technics SL-1210 MK2 professional, direct-drive record turntable. **£150-200**



Fine Art & Antiques, Thu, 25 November 2021 9:30

- 318 A collection of decorative walking and evening canes some with handles moulded as horses, fish and birds and an African carved hardwood walking stick. (7) **£150-250**



- 319 A 19th-century revolving miniature bookcase, containing miniature editions of the work of William Shakespeare ('The Best Texts By J Talfourd Blair'). **£200-300**



- 320 A Montblanc Meisterstuck 146 black fountain pen, the cap with gilt clip and triple cap band, two-tone nib stamped 4810 Montblanc 14K, in fitted case, together with a small Montblanc Meisterstuck ballpoint pen, 10.5 cm, two Smythson leather pen cases and a Smythson pencil case. (Qty: 5) **£200-300**



- 321 A collection of French Empire style gilt metal furniture mounts, the largest 56 cm wide. **£200-300**



- 322 A boxed Mamod live steam roadster. Together with a boxed Mamod steam wagon, and a technical model of a traction engine. **£200-300**



Fine Art & Antiques, Thu, 25 November 2021 9:30

- 323 A Bang & Olufsen 'BeoVision' Horizon-40", 4K Android smart television with adjustable stand, corresponding remote control and literature. **£300-500**



- 324 A Bang & Olufsen 'BeoVision' 14-40, 4K Android smart television, with corresponding remote control, power lead and literature. **£300-400**



- 325 A green and red striated marble sphere, 27cm dia
Purchased in Zurich from Antares Stones, 1st September 1995, for \$2500 **£300-500**



- 326 BeoSound 3200 system and speakers, with Beolab 2000 and a pair of BeoLab 6000 standing active loudspeakers. With some corresponding leads and literature. **£400-500**



- 327 A Roman-style carved amethyst glass oval Intaglio bracelet panel, decorated with a charioteer. With a longitudinal mounting hole. 4 cm x 3 cm **£400-500**



Fine Art & Antiques, Thu, 25 November 2021 9:30

- 328 Queen Elizabeth II: a single leaf of vellum with a calligraphic letter in fine colours highlighted with gold, appointing Detta O'Cathain (1938-2021) as a Baroness, together with a fine quality impression of the Great Seal of Elizabeth II, showing the enthroned Queen on the obverse and the Queen mounted on horseback on the reverse, each housed in a custom made red morocco bound case, 35.5 cm x 59 cm. The lot also includes related awards to the same recipient, namely an OBE medal in Thomas Fattorini case, (with miniature), a Finland 'Reublic Order of the Lion', by A H Tillander in case, (with miniature) and a cased David Andersen 925 silver gilt and enamel Cross, the Norwegian Order of Merit, (also with miniature).

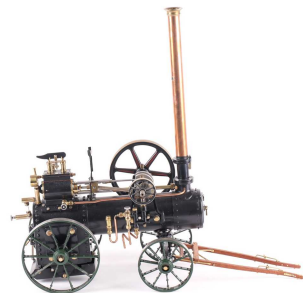
Estate of Baroness Detta O'Cathain **£500-700**



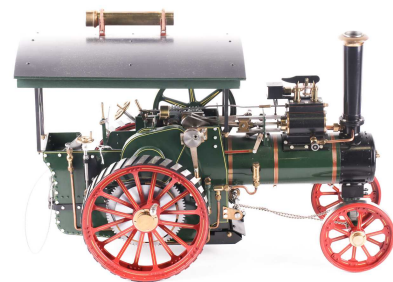
- 329 A fine early 20th-century tan leather travelling case by Louis Vuitton, with brass mounts and numbered 033483, 'E.A.R.' monogram to cover, fitted with various silver-gilt dressing bottles and leather accessories, 22 cm x 66 cm x 42 cm. Private collection. **£500-700**



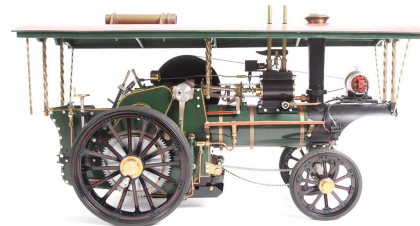
- 330 Maxwell-Hemmens, an 1" live steam scale model of a portable agricultural steam engine with a brass plaque bearing the legend "D.R.W.M Brookside 1984" and folding copper chimney. 47 cm long to the end of the shafts x 46 cm high overall. **£600-800**



- 331 Maxwell-Hemmens, an 1" scale live steam model of a traction engine with a brass plaque bearing the legend "C.S.W.M Brookside 1984". With green, black and red livery. 47 cm long x 30 cm overall height. **£800-1,200**



- 332 Maxwell-Hemmens, an 1" scale live steam model of a showman's engine fitted a brass plaque bearing the legend "J.M.W.M Brookside 1984". With green, black and red livery. 56 cm long x 31 cm overall high. **£800-1,200**



Fine Art & Antiques, Thu, 25 November 2021 9:30

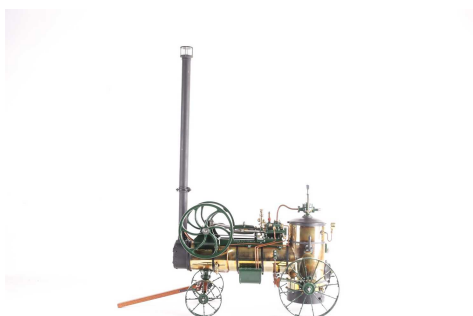
- 333 A silver Divit/ Qaladam Islamic scribes case, probably Ottoman Turk. With impressed marks to each component and running bands of flowers. 493 grams. 30 cm long. **£800-1,000**



- 334 Maxwell-Hemmens, an 1" live steam scale model of a steam roller with a brass plaque bearing the legend R.W.M. Brookside 1984 and painted in Lincoln green, yellow, black and red livery. **£1,500-2,000**



- 335 Maxwell Hemmens , live steam 1 1/2" scale model of a Merlin Vierzon portable agricultural steam engine with Lincoln green, red and black livery. 63 cm long x 73 cm high with chimney erected. **£2,000-3,000**



- 336 A Victorian silver-mounted easel-back dressing table mirror, dates and maker indistinct, 29.5 cm x 21 cm (full dimensions) **£60-80**



- 337 A graduated pair of two Persian silver ice buckets and covers, marked 'Vartan 84', with engraved foliate decoration, the largest 29 cm high, together with a similar white metal rectangular tray, 40.5 cm wide, 3400g combined weight. (Qty: 3) **£1,200-1,500**



Fine Art & Antiques, Thu, 25 November 2021 9:30

- 338 A Christofle silver-plated teapot, 10.5 cm high, together with other items of silver plate, to include a wine jug, water jug, cream jugs and flatware. **£60-80**



- 339 A large collection of coins, clocks and watches reference books, early 20th century and later. **£80-120**



- 340 A mid-20th century ceramic figure of a dancer, Art Deco style, painted in polychrome enamels on an oval base, 31 cm high, impressed number to base (no factory mark) **£100-150**



- 341 a Moorcroft pottery 'Anna Lily' pattern table lamp, of baluster form with wooden base, 38.5 cm high to include lampholder. **£60-100**



- 342 A Victorian earthenware match holder/striker, modelled as the devil's head, the rear of the head serrated for striking matches, 7cm wide, 8cm high **£100-200**



Fine Art & Antiques, Thu, 25 November 2021 9:30

- 343 A large Moorcroft baluster vase of shouldered form, decorated with the 'Orchid and Spring Flower' pattern, on a dark blue ground, monogram, impressed signature and other impressed marks, 37.5 cm high. **£120-180**



- 344 Robert Wallace Martin for Martin Brothers Pottery, a mottled blue-glazed stoneware vase, of shaped square form, incised marks to base, 26.8 cm high. **£200-300**



- 345 A 1929 cased part set of six Royal Crown Derby coffee cans and saucers, decorated in the Imari palette and heightened in gilt, printed factory mark and pattern No. '2451' to bases, with six conforming silver coffee spoons, (one demitasse and one saucer missing). **£150-250**



- 346 A group of four small Herend porcelain animals, comprising two pairs of ducks, a bear cub and a single duck, together with three Royal Crown Derby Imari decorated paperweights. (Qty: 7) **£150-250**



- 347 A Royal Dux Art Deco ceramic three-sconce candlestick, modelled with a nude female dancer, on a lobed, spreading foot, impressed number 3109 to base, with pink lozenge triangle, 35 cm high x 35 cm wide. **£150-250**



Fine Art & Antiques, Thu, 25 November 2021 9:30

- 348 An Arts & Crafts style blue lustre charger, in the manner of John Pearson, the well with a hare running under moonlight, within a repeating foliate border, painted marks verso and numbered 4429, 44 cm diameter. **£150-250**



- 349 A large Herend porcelain model of an elephant, in green fishnet pattern with gilt tusks and highlights, numbered 15625, 15 cm high, together with a similarly decorated pair of Herend kangaroos, 13.5 cm high. **£200-300**



- 350 A Herend porcelain model of a badger, 7.4 cm high, together with a Herend kingfisher and a squirrel. (Qty: 3) **£200-300**



- 351 A collection of Chateau de Tuileries Sevres porcelain cabinet items, comprising five plates, 24 cm diameter, six smaller plates, 19.5 cm, and two sets of six cups and saucers, each with handpainted putti decoration within a pale blue and gilt finished band, printed and painted marks to base. **£600-800**



- 352 A large collection of Dartington Glass commemorative tankards, together with a cased glass presentation award. **£50-80**



Fine Art & Antiques, Thu, 25 November 2021 9:30

- 353 A collection of eight small boxed Swarovski crystal glass items, variously modelled. (Qty: 8) **£80-120**



- 354 A collection of commemorative boxed Swarovski crystal items, comprising 1988 'Fabulous Creatures - Pegasus', 1999 'Masquerade Pierrot' and 2000 'Masquerade Columbine'. (Qty: 3) **£80-120**



- 355 A modern Lalique France 'Dahlia' pattern scent bottle, frosted and enamelled glass with stopper, 17.5 cm high, together with a covered powder bowl in the same pattern, 11.5 cm diameter, and a 'Two Fleurs' pattern scent bottle, 9 cm high. (Qty: 3) **£300-400**



- 356 A boxed Swarovski crystal 'Magic Of Dance' figure, Anna 2004, with a boxed conforming display stand and plaque, together with a SCS 2007 Jubilee Edition figure, 7685 Bird and 'Tinker Bell', also boxed. (Qty: 6) **£100-200**



- 357 A set of eight Waterford crystal wine glasses, 14.3 cm high. **£100-150**

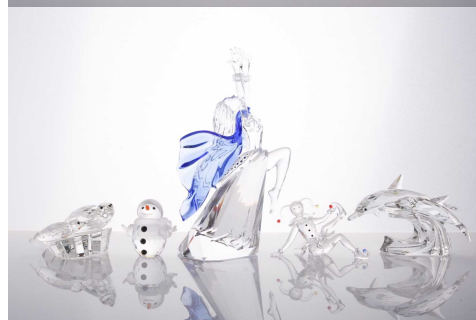


Fine Art & Antiques, Thu, 25 November 2021 9:30

- 358 A group of boxed Swarovski items, comprising 166184 Hummingbird, 7644 Fish, 183270 Rocking Horse, 7478 Rose and 7637 Teddy Bear. (Qty: 5) **£100-200**



- 359 A Swarovski crystal sculpture 'Magic of Dance, Isadora-2002', in original box, together with four further boxed Swarovski items. (Qty: 5) **£100-150**



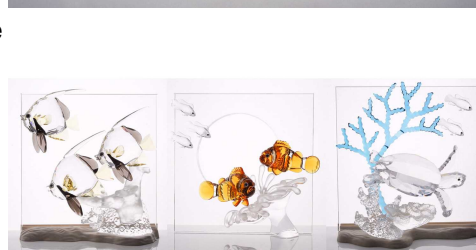
- 360 A collection of boxed Swarovski crystal items, variously modelled, to include 7644 Fish in Coral, 'Magic of Dance - Antonio 2003', 7473 Santa Maria Ship and others, together with two Waterford Crystal items, also boxed. **£120-180**



- 361 A collection of nine Swarovski boxed small crystal animals, variously modelled, to include numbers 7631, 7644, 7613, 7631 and others. (Qty: 9) **£120-180**



- 362 Three boxed Swarovski crystal commemorative items, from the 'Wonders of the Sea' series; 'Harmony', 'Community' and 'Eternity', each with conforming plaque (also boxed) (Qty: 6) **£150-250**



Fine Art & Antiques, Thu, 25 November 2021 9:30

- 363 A modern Lalique France clear glass decanter of shouldered form, 25.5 cm high, together with two Lalique France scent bottles, one frosted glass. (Qty: 3) **£200-300**



- 364 An extensive suite of Waterford (and other) crystal glassware, to include wine glasses, tumblers, decanters, boxed servers and others. **£800-1,200**



- 365 Two boxed Swarovski 'Endangered Wildlife' crystal figures, 'Tiger' and 'Gorillas'. (Qty: 2) **£150-250**

