

## Fine Jewellery, Watches & Silver, 22nd May, 2025 09:30

- 1 A Victorian pansy brooch set with moonstone and diamond, centred with an old-cut diamond, surrounded by five heart-shaped buff top moonstones as petals, edged with rose-cut diamonds, detachable brooch fittings to the reverse, unmarked metal testing as silver on 9ct, 2.0 cm wide, 5.1 grams. **£250-350**



- 2 A gem-set navette dress ring, featuring a central grain-set marquise-cut synthetic ruby encircled by a single row of fourteen grain-set seed pearls, to bifurcated shoulders of scrolled design, to a yellow metal shank surface testing as 18ct, size O. **£200-300**



- 3 A late 19th century brooch; the lozenge-shaped openwork scroll, claw-set with a central oval-shaped pink topaz and flanked by similarly-set and cut smaller pink topaz, suspending a detachable plaque of matching design claw-set with a pink topaz, all in foiled closed-back setting, surface tested 18ct, length 5.8cm. **£400-600**



- 4 A peridot and paste ring, featuring a central claw-set oval-cut peridot measuring approximately 6.5mm x 4.7mm, flanked by two bezel-set round mixed-cut pastes of deep red colour, the ring head detailed with filigree, tapering to a yellow metal dual ring shank, surface tested as 14ct, size N. **£200-300**



- 5 A collection of eight enamelled buttons, each of circular plaque form, mounted in pink metal stamped 9ct, decorated with white enamel scrolls within red enamel borders, cased, diameter 1.5cm, total weight 8.74 grams (8). **£200-300**



## Fine Jewellery, Watches & Silver, 22nd May, 2025 09:30

- 6 A mourning ring and a cultured pearl ring; the mourning ring with central oval black enamelled plaque inset with four seed pearls, the shoulders with black and golden enamel with inscribed 'In Memory of', mounted in 18ct yellow gold, stamped with London hallmark; together with a 8.1mm white cultured pearl to bi-coloured bifurcated shoulders, surface tested 18ct, ring sizes K and M. (2) **£200-300**



- 7 Two Edwardian gem-set necklaces; the first of openwork and scroll design, millegrain collet-set with three circular-cut garnets, highlighted by two similarly-set peridots; together with an openwork lozenge plaque decorated with seed pearls, both suspended to cable-link chain with barrel-shaped slide-in clasp, surface tested 9ct, pendant lengths 3.2cm, 5.5cm. (2) **£250-350**



- 8 A split ring; the rose band with reeded detail, surface testing as 18ct, diameter 5.38cm. **£100-150**



- 9 Two ruby, pearl and paste rings; each set with circular and oval-shaped rubies and paste, highlighted by seed pearls, stamped with Birmingham hallmark for 18ct and 15ct gold, ring sizes O. (2) **£200-300**



- 10 A Late 18th-century miniature heart and bow mourning locket, centred with a glazed sepia on ivory panel, depicting a Savoy knot within a laurel wreath, surround alternating with cushion-cut rubies and old-cut diamonds, to an enamelled bow surmount inscribed 'capillæ trium cor unum' (Hair three heart one), hinged compartment to verso engraved with three initials, open to reveal woven hairwork panel, unmarked metal testing as 9ct, 2.7 x 1.8 cm, 4.6 grams.  
Ivory certification reference 3XB83YZ9 **£400-600**



## Fine Jewellery, Watches & Silver, 22nd May, 2025 09:30

- 11 A Late Victorian locket on chain, comprising a hollow fetter link chain terminated with swivel clips, marked '9c', 38.0 cm long, suspending a later-added shield-shaped locket with scrollwork engravings on the cover, opened to reveal two photo compartments, one lacking glass, unmarked metal testing as 9ct, 3.8 cm drop; total weight of item 38.1 grams. **£600-800**



- 12 An emerald and diamond cluster ring in platinum, centred with a cushion-cut emerald of 9.4 x 9.1 x 6.6 mm, conforming surround, gallery and bifurcated shoulders are encrusted with diamonds throughout, to a grooved shank, Sheffield assay marks, ring head 1.3 cm wide, size M½, 9.8 grams. **£500-700**



- 13 A diamond-set ring, pendant on chain and matching earrings; the 9ct gold ring illusion-set with a round brilliant-cut diamond in crossover shoulders, size K; the diamond-set pendant with a diamond of 3.0mm, with an estimated weight of 0.10ct, in yellow metal collet with integral bail marked '18K 750', on a 40.0cm long Singapore chain marked '14kt'; together with a pair of matching earrings each set with a 0.10ct diamond, to post fittings, in yellow metal marked '585'; Total weight of items 5.0 grams (3). **£300-500**



- 14 A gem-set bar brooch of foliate design, centred with a round pearl of 4.9 mm, flanked by foliate motifs set with diamond chips, and terminated with two pear-cut aquamarines of deep blue colour, brooch fittings to verso with later-added base metal safety catch, pinkish yellow metal marked '9ct', 6.6 cm wide. **£200-300**



- 15 An Art Deco-style jade and diamond dress ring, centred with an oval carved jade panel, between angular shoulders, accented with single-cut diamonds and millegrain details, in unmarked white metal testing as 14ct, ring head 1.8 x 1.7 cm, size N½, 3.7 grams. **£300-500**



## Fine Jewellery, Watches & Silver, 22nd May, 2025 09:30

- 16 A tanzanite-set pendant and earrings suite, comprising a pear-cut tanzanite pendant with diamond-set pendant loop, in a white metal mount marked '18K', to a 9ct white gold trace chain with lobster clasp, measuring approximately 42cm, together with a pair of matching earrings, the pear-cut tanzanite suspended from a diamond-set surmount, with post fittings marked '750' and butterfly earring backs; 4.4 grams (2) **£300-500**



- 17 A cultured pearl and diamond dress ring in 18ct white gold, mounted with a round cultured pearl of 8.4 mm, white body colour with rose overtones, between trumpeted shoulders set with graduated baguette-cut diamonds, leading to a flat shank, Birmingham assay marks, size O, 3.9 grams. **£200-300**



- 18 A sapphire and diamond-set necklace, of curved articulated design, featuring three rows of channel-set calibre-cut sapphires, interspaced with round brilliant cut diamonds and sapphires, in a yellow metal mount marked '750', to a flat box-link chain with a bolt-ring clasp, measuring approximately 46.0cm; 7.1 grams. **£400-600**



- 19 A peridot and diamond cluster ring by Kiki McDonough; the collet-set oval-shaped peridot, measuring approximately 11.0mm x 8.7mm x 6.1mm, within a surround of brilliant-cut diamonds, approximately 0.20ct total, mounted in 18ct yellow gold, stamped with maker's mark and UK hallmark, ring size M ½, total weight 10.73 grams. **£300-500**



- 20 A diamond-set bird brooch, the textured bird with a collet-set brilliant-cut diamond eye, perched on a rope-twist openwork heart frame, surface tested 18ct, length 3.0cm, later-added brooch fittings to the back, total weight 6.77 grams. **£300-500**





## Fine Jewellery, Watches & Silver, 22nd May, 2025 09:30

- 21 A boulder opal dress ring, claw-set with a triangular polished boulder opal, displaying vibrant play-of-colour mainly ranging from green to purple, on a dark ground and ironstone matrix to the base, 13.6 x 9.5 x 3.1 mm, adorned with a diamond accent, between crossover shoulders to flat shank, yellow metal marked '18ct', size O, 3.5 grams. **£200-300**



- 22 An emerald and diamond arrow brooch, the point featuring a heart-cut emerald of bright green colour, leading to the fletching channel-set with a row of brilliant-cut diamonds, terminated with a bifurcated stylised shaft, brooch fittings and trombone clasp to verso, yellow metal marked '585', 3.7 cm wide, 3.4 grams. **£400-600**



- 23 A diamond-set ring in 18ct gold, comprising a diamond-set band of chevron form, overlaid at the shoulders by a plain engraved band, British assay marks, size J ½, 2.2 grams. **£150-250**



- 24 A peacock pendant and a pair of synthetic emerald cluster earrings, the circular pendant depicting a peacock, the feathers terminating in circular-cut colourless, green, red and blue gems, stamped '14K', together with a pair of synthetic cushion-shaped emeralds within a single-cut diamond surround, approximately 0.08ct total, to post fittings, mounted in 9ct yellow gold, stamped with UK hallmark, pendant length 3.8cm, earring length 1.0cm, total weight 11.09 grams (2). **£300-500**



- 25 An 18ct diamond cluster ring and wedding band; the cluster ring set with an emerald cut diamond of 3.0mm x 2.0mm, flanked to either side by a further two emerald cut diamonds of 2.5mm - 2.0mm each, surrounded by a halo of round brilliant cut diamonds measuring from 2.0mm to 1.5mm, prong set in white metal, to tapered chenier shoulders and shank of yellow gold with London hallmarks for 18ct gold, size O, together with a court style wedding band of 3.0mm in yellow gold with Birmingham hallmarks for 18ct, size O; Total weight 7.5 grams. **£300-500**



## Fine Jewellery, Watches & Silver, 22nd May, 2025 09:30

- 26 A gem-set panel ring, the navette openwork panel of scrolled foliate design, set with round brilliant-cut diamonds, sapphire and ruby highlights, to a D-profile shank in unmarked pinkish metal testing as 9ct, ring head 3.6 x 1.8 cm, size R, 6.0 grams. **£200-300**



- 27 Two gem-set rings and a pair of drop earrings; the diamond solitaire ring centred with a round brilliant cut diamond of approximately 0.47ct, in a square setting with diamond set shoulders of foliate design in white metal testing as platinum, size P; a ring set with four turquoise cabochons and round cut diamonds, to a scrollwork gallery, in yellow metal testing as 9ct, size M 1/2; and a pair of earrings with hollow spherical drops, set with a floral cluster of turquoise cabochons, suspended from a shepherd's hook fitting with single turquoise cabochons, in unmarked yellow metal, testing as gold and base metal. (3) **£200-300**



- 28 A sapphire and diamond cluster ring, centred with an oval-cut sapphire of deep greenish-blue colour, 8.3 x 6.2 x 3.7 mm, encompassed by ten round brilliant-cut diamonds with an estimated total weight of 0.10ct, between chenier shoulders leading to D-profile shank, yellow metal testing as 18ct, ring head 1.6 x 1.3 cm, size O, 5.4 grams. **£600-800**



- 29 A locket, a pendant and a brooch; the polished rectangular locket gypsy-set with a single seed pearl to a suspensory loop, with rubbed hallmark, surface tested 14ct; the pendant of bi-coloured and openwork design, with scroll and foliate detail highlighted by a central gypsy-set seed pearl and with a tapered suspensory loop, surface tested 18ct; together with a bi-coloured foliate rectangular brooch, stamped with Birmingham hallmark for 9ct; lengths 3.7cm, 3.5cm and 3.8cm. **£250-350**



- 30 Stuart Devlin - a diamond-set 'Daffodil' ring in 14ct rose gold, with a pierced repeating pattern of seven stylised daffodil motifs, each highlighted with a round brilliant-cut diamond ranging in size from 1.6 to 2mm, London import marks, shank measuring 8.5mm wide, size S, weight 7.2 grams **£200-300**



## Fine Jewellery, Watches & Silver, 22nd May, 2025 09:30

- 31 A collection of hardstone jewellery, comprising of two fobs set with quartz and garnet, five hardstone seals, three pendants such as a pig, heart and a soldier, together with a pair of watch key with seal finials, surface tested as 9ct, 14ct and gold-plated. **£250-350**



- 32 A diamond-set full eternity ring, comprised of round brilliant cut diamonds, channel-set in an unmarked yellow metal mount surface tested as 14ct gold, size K; 1.8 grams. **£150-250**



- 33 A ruby and diamond ballerina ring of tiered design, the central cluster claw-set with four circular-cut rubies highlighted by two duos of brilliant-cut diamonds, approximately 0.06ct total, within a ballerina surround of tapered baguette and baguette-cut rubies, stamped 18ct, ring size O, total weight 7.20 grams. **£300-500**



- 34 A group of five gem-set dress rings, in yellow metal surface testing as 9ct; the first featuring a claw-set pale yellow quartz of 21.6mm x 16.4mm x 10.5mm, size J; the second a paste cameo ring, the central cameo encircled by ten black faceted round pastes, to bifurcated shoulders, size M; the third a signet ring set with a single round red paste, size N ½; The fourth a ring centres with a star motif, featuring a central oval split pearl surrounded by polki-cut colourless sapphires and a blue enamel border, to a yellow metal mount engraved with scrolled detail, size O; the fifth a five stone ring featuring five graduating red pastes, the row of pasted flanked either side by a row of four split pearls, to an engraved yellow metal mount with Birmingham hallmarks for 9ct, size L. (5) **£300-500**



- 35 A sapphire and diamond panel ring, the openwork teardrop-shaped panel, comprising circular-cut sapphires and a frame of diamond highlights, to bifurcated shoulders with twisted cablework details, unmarked pinkish metal testing as 18ct, ring head 2.2 x 1.8 cm, size M½, 6.0 grams. **£400-600**



## Fine Jewellery, Watches & Silver, 22nd May, 2025 09:30

- 36 A ruby and diamond cluster ring, comprising a central claw-set oval mixed-cut ruby of 9.7mm x 8.1mm x 4.3mm, encircled by a single row of claw-set brilliant-cut diamonds, to a white metal ring shank of D-profile marked 'PT950' and 'Rhapsody', size N ½, 7.7 grams. **£250-350**



- 37 A pair of pink sapphire and diamond floral stud earrings; each quatrefoil form featuring a central round brilliant cut diamond of 0.03ct, surrounded by four round cut pink sapphires of 0.04ct each, with posts and butterfly backs in white metal stamped 750, total weight 1.8 grams. **£250-350**



- 38 A sapphire and diamond dress ring, of bi-coloured and bombe design, the central brilliant-cut diamond, approximately 0.08ct, within a surround of six circular-cut sapphires, to tapered shoulders of polished and rope-twist design, stamped 750, ring size O, total weight 10.62 grams. **£400-600**



- 39 A brooch of floral design set with cultured pearls, the floral motif comprising twisted wire petals, centred with a cultured pearl of approximately 7.8mm of white ground with silver pink lustre, accented by a further three pearls of approximately 6.5mm, set atop stylised leaves made up of wire sprays, with hinged-pin fitting to reverse and safety chain, in yellow metal stamped "18ct" and makers mark "LF", measuring approximately 5 cm x 4.1cm. **£600-800**



- 40 A brush-finished ring band in 18ct gold, with scrolled engraving to one edge of the band, measuring 5.9mm wide, Birmingham, makers mark 'DOM', size P, 9.2 grams. **£400-600**





## Fine Jewellery, Watches & Silver, 22nd May, 2025 09:30

- 41 A paste and diamond cluster ring, the central claw-set blue circular paste within a surround of baguette and brilliant-cut diamonds, approximately 0.50ct total, surface tested as 18ct, ring size M, total weight 5.86 grams. **£300-500**



- 42 A gem-set brooch, the onyx circular plaque centrally set with rose-cut diamond, to an outer surround decorated with circular-cut rubies at each cardinal point, interspersed with white cultured pearls of 3mm, and highlighted by rose-cut diamonds, all in closed-back setting, surface tested as 9ct, diameter 3.5cm. **£200-300**



- 43 A diamond and sapphire cluster ring, comprising a central claw-set brilliant-cut diamond, flanked by scrolling grain-set channels of brilliant-cut diamonds and four claw set diamonds at ordinal points, four marquise-cut sapphires claw-set at cardinal points to the central diamond, to a banded ring shank marked with Porto rooster mark and Portuguese ant mark indicating white gold with a minimum fineness of 800 or higher, size M ½, 5.0 grams. **£300-500**



- 44 A brooch of floral and foliate design, depicting a hibiscus flower and foliage to the centre, the surround of scrollwork design, the reverse engraved with the following: 'd. 12th Mar, '55.', with C-clasp pin fitting, the brooch measuring approximately 48mm long, in yellow metal surface tested as 18ct gold. **£200-300**



- 45 Two Victorian gem-set rings; the first comprising a central old-mine cut diamond, grain-set in a lozenge motif to a rectangular segment, the rectangular segment flanked each side by a smaller rectangular segment, grain set with two split pearls, and a triangular segment grain-set with a split pearl, to a tapering 18ct gold ring shank with Birmingham hallmarks, dated 1888, size K ½; the second comprising a central round mixed-cut blue sapphire, grain set to a ring head with scalloped edge detail, the sapphire flanked each side by two grain-set rose-cut diamonds, to a 22ct gold ring shank with Birmingham hallmarks, dated 1879, size N ½. **£250-350**



## Fine Jewellery, Watches & Silver, 22nd May, 2025 09:30

- 46 A group of fine split rings; comprising fifteen split-rings, some with engraved detail, in yellow and pink metal, surface tested as 9ct. **£400-600**



- 47 A single-strand of Tahitian pearls with an emerald clasp, the row of fifty black cultured pearls graduating between 7.9mm - 8.3mm, strung and knotted, to an oval-shaped fish hook clasp decorated with a collet-set oval cabochon emerald, measuring approximately 15.7mm x 12.2mm, closed-back setting, stamped '9ct', length 47.2cm, total weight 46.76 grams. **£500-800**



- 48 A modernist ring, featuring a central concave oval form leading to a tapering shank, surface testing as 18ct, size L. **£800-1,200**



- 49 A ruby, sapphire and diamond hinged torque bangle of reeded design, each finial decorated with a collet-set cabochon ruby or sapphire and highlighted by a row of seven brilliant-cut diamonds, approximately 2.10ct total, stamped 18K, width 2cm, inner diameter 6cm, total weight 56.88 grams. **£2,000-3,000**



- 50 A diamond single-stone pendant necklace, the four-claw set brilliant-cut diamond, weighing 2.10ct, to a tapered bifurcated suspensory loop, suspended from a flat curb-link chain with spring-ring clasp, yellow metal stamped '585', pendant length 1.5cm, chain length 45cm, total weight 2.59 grams. **£2,000-3,000**



## Fine Jewellery, Watches & Silver, 22nd May, 2025 09:30

- 51 A monogrammed bracelet, the central circular plaque engraved with initials AL, to tapering shoulders, to a bi-coloured flat-curb link backchain with slide-in depress clasp and safety chain, surface tested as 18ct, length 19cm. **£1,200-1,800**



- 52 A diamond line bracelet, with an estimated total diamond weight of 5.20ct, comprising fifty-two round brilliant-cut diamond in square articulated mounts, completed with a concealed tongue clasp and lever safety catch, white metal marked '18kt', overall length 17.8 cm, 13.6 grams. **£2,000-3,000**



- 53 An emerald and diamond dress ring in 18ct gold, centred with a square step-cut emerald with canted corners in bright green colour, approximately measures 8.9 x 8.4 x 6.1 mm, claw-set between two rows of channel-set diamonds with an estimated total weight of 0.32ct, to a tapering shank, Birmingham assay marks, size O, 6.6 grams. **£500-700**



- 54 A twisted mesh necklace, leading to a push bar clasp with safety catch, in yellow metal marked '18K', measuring approximately 44.5cm. **£800-1,200**



- 55 A kunzite and diamond cocktail ring in 18ct gold, claw-set with a large kunzite of light pink colour, 19.8 x 15.1 x 10.4 mm, in an openwork gallery flanked between diamond-set shoulders, signed 'Lorique', Birmingham assay marks, size O, 11.5 grams. **£500-700**



## Fine Jewellery, Watches & Silver, 22nd May, 2025 09:30

- 56 A diamond-set hinged bangle, in the style of the T1 bracelet, with an estimated total diamond weight of 1.30ct, half of the band pavé-set with an array of round brilliant-cut diamonds, T-shaped clasp with push-in thumbpiece, pink metal marked with Indian assay mark '18K 750', inner diameter 6.1 cm, 21.5 grams. **£1,000-1,500**



- 57 A diamond-set half-hoop ring, claw-set with five old-cut diamonds with an estimated total carat weight of 1.71ct, the diamonds measuring approximately 5.6mm, 4.4mm and 3.8mm, with scroll detailing to the gallery and shoulders, in a yellow metal mount marked '18', size O. **£800-1,200**



- 58 An expandable wire bangle with six suspended disc charms, in yellow metal surface tested as 9ct gold, the charms each engraved with the following, '1897', 'LER', 'Florence', 'Auntie L', 'Mama', 'Papa', and individual letters to the reverse spelling out 'BE GOOD'. **£200-300**



- 59 A Modernist ring, comprising a white metal annulet wrapped by two loops of yellow metal, extending to chenier shoulders and a flat yellow metal shank marked '18ct', ring head measuring 1.7cm x 2.0cm, size L, 9.2 grams. **£300-500**



- 60 A gem-set butterfly brooch, the wings composed of round brilliant cut diamonds of various sizes, to a yellow metal thorax with ridged detailing, the eyes accented by round mixed-cut rubies, in a bi-colour metal mount tested as 18ct gold, with brooch pin fitting to the reverse; 4.3 grams. **£400-600**





## Fine Jewellery, Watches & Silver, 22nd May, 2025 09:30

- 61 A gem-set dress ring, claw-set with an oval glass-filled ruby high domed cabochon of 7.0 x 6.0 x 5.7 mm, further adorned by six marquise-cut diamonds, rows of brilliant-cut and calibr  -cut diamonds in channel setting, leading to a tapering flat shank in yellow metal stamped '750', ring head 1.8 x 1.6 cm, size M, 6.1 grams. ** 300-500**



- 62 A group of three chains; including one fine wheat chain guard chain of approximately 125cm in length, terminating with albert hook of 1.5cm, in unmarked pink metal; a trace chain of 37.5cm with Star of David pendant and cultured pearl drop, with clasp in yellow metal stamped "14K"; together with a curb chain necklace of 52cm, with C-spring clasp in unmarked yellow metal; all surface testing as 14ct. (3) ** 350-450**



- 63 A pink sapphire cluster ring, comprising nine oval-cut pink sapphires (one deficient) interspersed with circular-cut white sapphire accents, to a grooved shank, unmarked metal testing as silver, ring head 2.1cm x 1.7cm, size M, 6.4 grams. ** 300-500**



- 64 A diamond-set floral brooch, the flower in bloom with the pistil decorated with a cluster of seven four-claw set brilliant-cut diamonds, approximately 0.70ct total, within a surround of engraved leaves, stamped 14K, diameter 3.5cm, total weight 10.02 grams. ** 500-700**



- 65 A diamond half-hoop ring, with an estimated total diamond weight of 0.68ct, comprising three graduated old-cut diamonds, interspersed with rose-cut diamond accents, between scrolled shoulders leading to D-profile shank, unmarked yellow metal testing as 18ct, size N  , 2.5 grams. ** 250-350**



## Fine Jewellery, Watches & Silver, 22nd May, 2025 09:30

- 66 A pair of diamond cluster earrings in 18ct white gold; each set with a central round brilliant cut diamond of 3mm, surrounded by an inner halo of round brilliant cut diamonds of 1.8mm, and an outer halo featuring stones of approximately 1.5mm, prong-set in open gallery and floral motif to reverse with post and butterfly fittings, British hallmarks, each stud head approximately 1.0cm, total weight 4.2 grams. **£300-500**



- 67 A Modernist ring with diamond cluster to centre; the mount of raised cylindrical form, with a concave reflective bowl, polished to a mirror finish, inset with a cluster of fourteen round brilliant-cut white diamonds of approximately 2mm each, in white metal prong settings, ring head measuring 1.8cm, to a curved shank of approximately 5.0mm, in yellow metal surface testing as 18ct, size L. **£600-800**



- 68 A carved link bracelet of scarab design, composed of six oval multi-gemstone cabochons carved as scarabs, including bloodstone, rock crystal, tiger's eye, carnelian and dyed chalcedony, connected by reeded loops and completed with a spring-ring clasp, yellow metal stamped '14K', overall length 18.35 cm. **£200-300**



- 69 A diamond-set dress ring, the plaque-style head centrally-set with an old-cut diamond in a millegrain-detailed surround, the diamond with an estimated carat weight of 0.33ct and measuring approximately 4.5mm, with pierced gallery leading to a white metal shank surface tested as 18ct gold, size I; 2.2 grams. **£300-500**



- 70 A small group of Early 19th Century jewellery items; comprising an orange topaz pendant, in a closed-back bezel setting tested as 14ct gold, the topaz measuring approximately 19mm x 7mm; a pendant of scrollwork design, set with a foiled-back topaz and chrysoberyl, in yellow metal tested as 18ct gold; a foliate design brooch set with garnets, in yellow metal tested as 9ct gold; a single earrings, bezel-set with foiled-back topaz; and a paste and seed pearl brooch. (5) **£200-300**



Fine Jewellery, Watches & Silver, 22nd May, 2025 09:30

- 71 A solitaire diamond ring; featuring a central round-cut diamond of 0.24ct, flanked by tapering diamond-set shoulders, the shoulders with a combined carat weight of 0.11ct, to an 18ct white gold ring shank of D-profile, Edinburgh assay mark, boxed with accompanying certificate of origin, size M, 2.4 grams. **£300-500**



- 72 A Carrera y Carrera 'Las Manos' hand pin, together with a mezuzah case; the pin is sculpted as a hand holding a navette-cut sapphire and wearing a diamond bracelet, fitted with pin and guardian back, signed and numbered, yellow metal marked '750', 2.3 cm long, 3.3 grams; together with a mezuzah case with scrollwork design, unmarked metal testing as silver, 5.0 cm drop. (2) **£200-300**



- 73 A nine-stone Navaratna ring in 22ct yellow gold, the square head set with nine various gemstones including chrysoberyl, coral, pearl, diamond, corundum and emerald etc., between grooved shoulders to a flat shank, British hallmarks, size O, 4.6 grams. **£200-300**



- 74 A pair of textured earrings, of elongated domed form, with cross-hatched design on textured ground, to posts and omega back fittings, in yellow metal stamped with "237AL" registration mark for Garavelli, and "ITALY 18K 750", measuring approximately 19mm x 12mm. **£400-600**



- 75 A sapphire and diamond cluster ring in 18ct gold, comprising a central claw-set oval-cut sapphire of light purplish-blue colour, measuring 9.5mm x 8.2mm x 4.5mm, encircled by ten round brilliant-cut diamonds grain-set within a millegrained border, leading to a ring shank of D-profile, London 1999, makers mark MMJ, size M, 5.1 grams. **£800-1,200**





## Fine Jewellery, Watches & Silver, 22nd May, 2025 09:30

- 76 A planished open cuff bangle, in unmarked yellow metal surface tested as high carat, measuring approximately 16.6mm wide and the inner diameter measuring approximately 61mm. **£1,200-1,800**



- 77 A glass-filled ruby and diamond dress ring, centred with a claw-set oval cabochon glass-filled ruby of approximately 14.6mm x 10.5mm, flanked by diamond-set shoulders of foliate design and bordered either side by a row of seventeen single-cut diamonds, set in yellow metal testing as 18ct, size Q, 7.9 grams. **£800-1,200**



- 78 A fancy bismarck link bracelet in 9ct gold, comprising a series of links of stylised lemniscate form, interspersed by rectangular baton links, completed with a box clasp and additional safety chain, British hallmarks, inner circumference approximately 16.0cm. **£500-700**



- 79 A sapphire and diamond-set cluster ring, of floral design, featuring a central dark blue sapphire, surrounded by illusions-set single-cut diamonds and round mixed-cut sapphires, in a tiered setting with a high gallery in bi-colour metal, to tapered shoulders leading to a 9ct yellow gold shank, size L1/2; 5.8 grams **£200-300**



- 80 A pair of pearl, emerald and diamond earrings, each features a large egg-shaped white cultured pearl of 14.0 mm, set underneath a chequerboard surmount composed of vari-cut diamonds and step-cut emeralds, with an estimated total diamond weight of 1.62ct, ear post and omega clip fittings to verso, white metal stamped '585', drop length 3.0 cm, 14.5 grams. **£400-600**





Fine Jewellery, Watches & Silver, 22nd May, 2025 09:30

- 81 A three-stone diamond ring with an estimated total carat weight of 0.29ct, comprising three round brilliant-cut diamonds, interspersed by bead settings, flanked by a split yellow metal mount, leading to a yellow metal shank marked '750', size N, 4.7 grams. **£200-300**



- 82 A group of three chains; comprising a belcher chain of 61.5cm, to a C-spring clasp, with British hallmarks for 9ct gold; a flat anchor-link chain of 60.5cm, to a C-spring clasp, stamped "375" signed "Bellino"; and another flat anchor-link chain of 59cm, to a C-spring clasp, stamped "375" signed "Bellino"; total weight 17.0 grams. (3) **£300-400**



- 83 A diamond single-stone pendant necklace, the four-claw set brilliant-cut diamond, weighing 1.73ct, to a tapered suspensory loop, suspended from a box-link chain with spring-ring clasp, mounted in yellow metal stamped '585', pendant length 1.2cm, chain length 42.5cm, total weight 1.91 grams. **£800-1,200**



- 84 Cartier - a Panthère de Cartier ring, small model, the open band ring with a stylised panther head motif, adorned with an onyx nose and two tsavorite garnet eyes, signed and numbered, yellow metal struck with French eagle head assay mark (indicating 18ct), size 54 (UK size M), 10.1 grams. **£700-900**



- 85 A multi-strand pearl necklace; comprised of seventeen strands of semi-round cultured keshi pearls, interspersed with beads of yellow metal, the pearls of cream body colour with pink overtones, ranging in size from 2.5mm to 4.5mm, terminating in a bi-colour bayonet clasp of banded form, stamped "750", weight 195.9 grams. **£400-600**



## Fine Jewellery, Watches & Silver, 22nd May, 2025 09:30

- 86 A diamond half-eternity ring, with an estimated total diamond weight of 0.60ct, comprising three rows of baguette-cut diamonds, alternating with round brilliant-cut diamonds, to a tapering flat shank in white metal marked '750', size N, 4.1 grams. **£300-500**



- 87 A turquoise and cultured pearl dress ring, of floral design, comprising a centrally-set cultured pearl of 7.4mm, surrounded by round turquoise and green hardstone cabochons, with raised basket gallery to tapered shoulders, in yellow metal surface tested as 18ct gold, size J ½; 5.5 grams. **£200-300**



- 88 A pair of diamond-set pendant clip-on earrings, each composed of an openwork square panel with Maltese cross motif, centred with an old-cut diamond and further embellished with diamond chip accents, suspending from a conforming foliate surmount with millgrained edges and rose-cut diamonds, to later-added omega clip fittings, yellow metal stamped '750' and surface testing as 18ct, drop length 3.4 cm, 5.9 grams. **£300-500**



- 89 A George III hairwork mourning brooch, of oval form with glass compartment encasing locks of hair arranged in a scrolled pattern, tubular surround engraved with a repeating foliate motif, topped with a pendant bail and fitted with a hinged-pin stem and C-catch, reverse engraved with commemorative inscription dated 1855, in unmarked yellow metal surface testing as 9ct, measurements approximately 6.5cm x 5.5cm. **£300-500**



- 90 A signet ring in 18ct yellow gold, the oval head engraved with initials 'WM', with tapering ridged shoulders leading to a court-shaped shank, Chester assay marks, size G. **£200-300**



## Fine Jewellery, Watches & Silver, 22nd May, 2025 09:30

- 91 Three seed pearl brooches and a pair of earrings; the crescent brooch with a perched seed pearl bird, stamped 9ct; the sword with graduated seed pearl highlights, with safety chain, stamped with rubbed hallmark for 9ct; together with a brooch depicting oak leaves highlighted by seed pearl acorns, stamped 15ct; and a pair of gilt dormeuse earrings of star and buttercup mount, collet-set with a rose-cut diamond, back-to-front wire fittings. **£200-300**



- 92 A Victorian hairwork mourning brooch, of oval form with glazed compartment encasing braided hairwork, in mount surrounded by ornate repoussé scrolls, backed with blue velvet and fitted with a hinged-pin stem and C-catch to the reverse, in unmarked yellow metal surface testing as 9ct, measuring approximately 7.1 cm x 6.3cm. **£200-300**



- 93 Three early 19th Century hairwork mourning brooches; one of circular form with seed pearl border, featuring a glazed compartment with tied lock of hair, pin-fitting to reverse; another of navette form, glazed compartment with scrolled locks of hair, against a white ground (with discolouration), within a seed pearl border, pin-fitting to reverse; and another of oval form, glazed compartment with braided hairwork, within seed pearl border, pin-fitting to reverse; all surface testing as 9ct. (3) **£200-300**



- 94 Two diamond-set gypsy rings; the first set with old-cut diamonds, between foliate motifs with a scalloped border, in an 18ct gold mount, hallmarked Birmingham, 1904, size L; the second star-set with old-cut diamonds together with scrollwork detailing, in an yellow metal mount tested as 18ct, size G. **£200-300**



- 95 A Victorian hairwork mourning brooch, of oval form, glass compartment encasing braided hairwork, twisted surround engraved with a repeating foliate motif, topped with a pendant bail and fitted with a hinged-pin stem and C-catch, with glazed compartment with photograph to reverse, in unmarked yellow metal surface testing as 9ct, measurements approximately 6.5cm x 5.0cm. **£200-300**



## Fine Jewellery, Watches & Silver, 22nd May, 2025 09:30

- 96 Two 19th Century mourning rings, a gem-set ring and two ring settings; each mourning ring comprising of a lock of hair, one to trifurcated shoulders, the other within a seed pearl and enamel border, both in closed back settings, together with a seed pearl and garnet ring and two other mounts, one set with seed pearls, the second with emerald and ruby, surface tested as 9ct and 18ct, ring sizes K-N ½, total weight 8.78 grams (5). **£250-350**



- 97 An aquamarine and diamond cluster ring, comprising a central collet-set rectangular-cushion cut aquamarine, encircled by two rows of grain-set polki-cut diamonds, to bifurcated shoulders of scrolled design, to a tapering yellow metal shank, the white and yellow metal surface tested as platinum and 18ct, size Q, 4.8 grams. **£300-500**



- 98 An Art Deco carved jade pendant necklace, featuring a tapered rectangular jade pendant of patchy pale apple green colour, 5.0 x 2.3 cm, carved as a Chinese dragon among clouds, suspending from a geometrical surmount with millgrain details and single-cut diamonds, attached to a fine cable link chain with spring-ring clasps, white metal marked '18ct PT', pendant drop 6.8 cm, chain overall length 45.0 cm, 14.7 grams. **£250-350**



- 99 Three Early 19th Century hairwork mourning brooches; the largest of which comprising a rectangular glazed compartment to centre containing hairwork bordered with seed pearls, to a black enamel surmount with gothic script, the swagged border in unmarked yellow metal testing as 9ct; together with an oval brooch of Ouroboros snake design, with diamond-accented eyes and black enamel patterns, centred glazed compartment encasing braided hairwork, with an applied royal cypher, pin-fitting deficient, in unmarked pink metal testing as 14ct; and a rounded rectangular sample, with a repousse border in unmarked yellow metal surface testing as 9ct. (3) **£300-500**



- 100 A sapphire and diamond heart-shaped locket on chain; the cover encrusted with varisized circular-cut sapphires, centred with an old-cut diamond of 6.0 mm with an estimated weight of 0.85ct, to conforming bail, with a hinged compartment with glaze deficient, unmarked yellow metal testing as silver on 18ct, drop length 4.0 cm, on a 46.0 cm long loose rope-link chain in white metal testing as silver, total weight of item 15.2 grams. **£800-1,200**





## Fine Jewellery, Watches & Silver, 22nd May, 2025 09:30

- 101 A star sapphire and pearl dress ring in 18ct gold, centred with a collet-set round star sapphire of bluish-purple colour, measuring approximately 13.0mm x 12.8mm, encircled by a row of nine split-baroque pearls, interspersed by collet-set single-cut diamonds, to a tapered wire gallery and a two-toned wire ring shank, signed 'B. Jacot' with makers mark for JS Cattermole, London 2000, size O ½, 24.2 grams. **£400-600**



- 102 A late Ottoman diamond brooch of iris form, circa 1900s, encrusted with rose-cut diamonds and diamond chips in foiled-back buttercup mounts, brooch fittings to verso, gilt metal, 3.9 x 2.9 cm, 8.1 grams. **£400-600**



- 103 Three brooches; to include an aquamarine bar brooch, centred with a cushion-cut aquamarine of 9.6 x 8.8 x 4.3 mm, fittings to the back, unmarked yellow metal testing as 9ct, 5.9 cm; a navette-shaped guilloché enamel brooch in powder blue, embellished with seed pearl and diamond chips to the scrolled border, in unmarked metal testing as 9ct; and a Victorian quatrefoil agate mourning brooch, in a foliate claw mount, centred with a glazed compartment, fittings to the back, 5.2 cm wide; Total weight of items 27.1 grams. (3) **£200-300**



- 104 A gem-set locket pendant, the shield-shaped plaque overlaid with a crown decorated with graduated half cultured pearls, one deficient, and a row of calibre-cut cabochon turquoise, surmounting further graduated similarly-set cultured pearls, surmounted by scroll detail and a seed pearl tapered suspensory loop, surface tested as 18ct, length 6.6 cm. **£600-800**



- 105 Benzie's of Cowes - a Royal Yacht Squadron Club ripple pennant enamel brooch, to a flag pole with brooch fittings to the back, set in yellow metal marked '14ct', 2.7 cm wide, 4.7 grams. **£200-300**



## Fine Jewellery, Watches & Silver, 22nd May, 2025 09:30

- 106 An emerald and diamond trilogy ring, claw-set with a rectangular step-cut emerald with canted corners, 8.7 x 7.0 x 4.6 mm, flanked by angled shoulders further set with brilliant-cut diamonds, gallery chased with scrolled foliate, leading to applied serpent motifs on tapering shank, two-toned metal marked '18K', size O, 12.4 grams. **£400-600**



- 107 A box chain guard chain, completed with a spring ring clasp, one loop stamped '3 AR' and '750', surface tested as 18ct, 70.0cm overall length. **£500-700**



- 108 A heliodor and diamond halo ring, centred with a large navette-shaped yellow beryl (heliodor) of 21.0 x 10.9 x 6.1 mm, in a claw setting encircled by twenty-four round brilliant-cut diamonds, with an estimated total weight of 1.08ct, leading to a D-profile shank, white metal stamped with French eagle head assay mark for 18ct, and a partial maker's mark, ring head 2.9 x 1.6 cm, size N, 8.7 grams. **£500-700**



- 109 A diamond half-eternity ring, with an estimated total diamond weight of 0.52ct, channel-set with four round brilliant-cut diamonds flanking three baguette-cut diamonds, to a court-profile shank, white metal marked '750', size N, 5.1 grams. **£300-500**



- 110 A fancy fetter link chain, of bi-coloured design, comprising a series of fetter and bar links with T-bar and suspending a bi-coloured knot charm with planished detail, surface tested 18ct, length 36cm. **£1,000-1,500**



## Fine Jewellery, Watches & Silver, 22nd May, 2025 09:30

- 111 A diamond trilogy ring, with an estimated total diamond weight of 1.57ct, comprising three graduated round brilliant cut diamonds in a coronet setting, between tapered shoulders to a D-profile shank, white metal marked '18ct', size Q½, 3.7 grams. **£1,000-1,500**



- 112 A diamond-set bracelet, with an estimated total diamond weight of 1.70ct, comprising a concave rectangular plaque, set full out with black and white round brilliant-cut diamonds, attached to a curb link bracelet with lobster clasp, discoloured white metal marked '750', testing as 18ct, overall length 21.0 cm, 23.1 grams. **£800-1,200**



- 113 A sapphire and diamond ring and earring suite, of openwork textured and tapered design, highlighted by two square-cut sapphires and three brilliant-cut diamonds, stamped '18K', together with a pair of earrings en suite with screw-on posts, approximately 0.75ct, ring size H, earring length 2.2cm, total weight 9.05 grams (2). **£400-600**



- 114 A Mughal-style diamond-set ring, the panel featuring nine bezel-set single-cut diamonds, of graduated sizes, the setting arranged in an elongated floral pattern, with a diamond-set surround with millegrain detailing and scalloped border, to scroll shoulders leading down to a ridged shank, in bi-colour metal tested as 18ct gold and silver, size K1/2; 7.8 grams **£200-300**



- 115 A ruby and diamond-set ring and a diamond-set ring; the ruby and diamond ring comprising a central claw-set round mixed-cut ruby of 3.5mm x 3.5mm, flanked either side by a claw-set old-cut diamond and a claw-set ruby of 2.5mm x 2.5mm, tapered shoulders lead to an 18ct yellow gold ring shank of D-profile, size N; the diamond-set ring featuring a central collet-set single-cut diamond of approximately 2.7mm x 2.7mm, the diamond surrounded by a white metal panel comprising openwork and millegrain detail, to a tapered yellow metal knife edge shank marked '18ct' and 'PLAT', size L. (2) **£250-350**



## Fine Jewellery, Watches & Silver, 22nd May, 2025 09:30

- 116 A carved lapis lazuli pendant on chain, set with diamonds; featuring a large piece of lapis lazuli measuring 5.5 x 3.0cm, carved with a motif of a peacock and roses, set within an organic scrollwork mount, accented by six round brilliant-cut diamonds of approximately 2.3mm each, with an estimated total carat weight of 0.24ct, with a tapered bail in yellow metal stamped "14k", suspended from a fancy link chain of 51.5cm in length, to a lobster clasp, in yellow metal with rubbed stamps, surface testing as 14ct, drop measuring approximately 7.5cm, total weight 30.2 grams. **£500-700**



- 117 A diamond-set ring, comprising a central bar-set princess-cut diamond of approximately 0.29ct, flanked by shoulders each featuring a central row of ten brilliant-cut diamonds extending to ring shank with a indented channel detail, white metal marked with Netherlands 18ct hallmark, size K ½, 7.1 grams. **£300-500**



- 118 A double-row amethyst bead choker necklace with a pearl cluster clasp, comprising two strands of graduated round amethyst beads, sizing from 8.4 mm to 15.8 mm, hand-knotted to coral bead terminals and a cultured pearl flowerhead fish-hook clasp marked '9ct', overall length 36.0 cm, in fitted case, total weight of item 123.1 grams. **£300-500**



- 119 A sapphire and diamond-set three-stone ring, the central octagonal-cut pale blue sapphire measuring approximately 8.5mm x 7mm, flanked by two round brilliant cut diamonds, claw-set in a white metal head leading to a yellow metal shank marked '18ct', size T ½; 4.9 grams. **£200-300**



- 120 A gem-set cross pendant on chain, the cross pendant centred with a circular-cut sapphire highlight, with the arms channel-set with baguette-cut diamonds, on a stylised bail, unmarked two-toned metal testing as 14ct, 3.3 cm drop; on a 47.0 cm long Singapore chain in yellow metal marked '14K', 5.6 grams. **£200-300**





## Fine Jewellery, Watches & Silver, 22nd May, 2025 09:30

- 121 A silver and enamel necklace by Charles Horner and a Danish bracelet and moonstone necklace; the silver bracelet composed of five polished tapered sections, to a hook clasp, stamped with UK import mark and maker's mark DSD, together with a moonstone fringe necklace mounted in presumed silver, and a white, pink and green foliate enamel pendant necklace, mounted in presumed silver, lengths 18.2cm, 42.5cm and 29.9cm. **£200-300**



- 122 A Mabé pearl and ruby cocktail ring, centred with a round Mabé pearl of 12.7 mm in diameter, encircled with a frame of circular-cut rubies, between foliate shoulders to flat shank, unmarked pink metal testing as 14ct, ring head 2.2cm wide, size L½, 10.3 grams. **£200-300**



- 123 An anchor link chain necklace, featuring hollow anchor links of 4.6mm x 6.6mm, measuring 43.0cm in length, in unmarked yellow metal, testing as 9ct, with a spring ring clasp in yellow base metal, total weight 9.9 grams. **£200-300**



- 124 A diamond half-hoop ring, with an estimated total diamond weight of 0.83ct, comprising five graduated round brilliant-cut diamonds in a scrolled gallery, to a tapering D-profile shank, unmarked white metal testing as 18ct, size S½, 5.6 grams. **£400-600**



- 125 Tiffany & Co. - a diamond hoop bangle by Elsa Peretti, open wire bracelet terminated with two collets set with round brilliant-cut diamonds, with an estimated total weight of 0.12ct, signed and marked 'AU750', inner diameter measuring 6.5 cm, 3.7 grams. **£400-600**



## Fine Jewellery, Watches & Silver, 22nd May, 2025 09:30

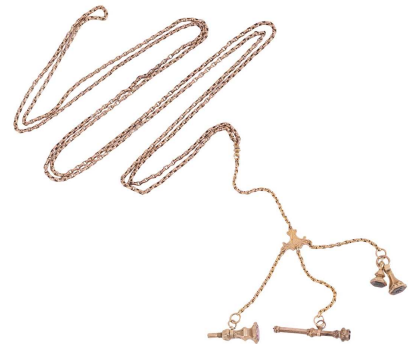
- 126 A sapphire and diamond halo ring in platinum, claw-set with a navette-cut sapphire of 8.8 x 4.5 mm, to a surround embellished with round brilliant-cut diamonds and shoulders set with pear-cut diamonds, to a D-profile shank, London 2023, size Q, 5.9 grams. **£200-300**



- 127 An aquamarine and diamond ring and a seven-stone diamond ring; The four-claw set cushion-shaped aquamarine, measuring approximately 8.0mm x 8.0mm x 5.2mm, to a gallery and shoulders similarly-set with brilliant-cut diamonds, approximately 0.25ct total, stamped '14K', together with a seven-stone brilliant-cut diamond-set ring, approximately 0.35ct total, of undulating design, stamped '750', ring sizes L ½ and J, total weight 4.57 grams (2). **£300-500**



- 128 A long fob chain and seals, comprising three belcher chain drops surface tested as base metal, one featuring an amethyst seal of shield-form, set to a hexagonal fob decorated with scroll engraving, another drop featuring a propelling pencil, terminated by a round purple paste, the final belcher chain drop featuring two fob seals, both set with hexagonal carved bloodstone seals, the three belcher chain drops suspended from a surmount featuring foliate and scroll engraving, the surmount suspended from a single belcher chain, completed with a lobster clip attached to a belcher fob chain, overall measuring 140.0cm, the fob chain surface testing as 9ct. **£500-700**



- 129 A fancy link fob chain, comprising a series of bow-shaped links encapsulated by an elongated oval surround, interspersed by fetter links, featuring a T-bar to the centre marked '9c', terminated by two dog clips marked '9ct', one of which holds a split ring of serpent form surface testing as 18ct, 37.5cm in length. **£1,000-1,500**



- 130 A diamond eternity ring in platinum, comprising a court shaped band detailed with a central row of grain-set brilliant-cut diamonds, size W ½, 7.6 grams. **£200-300**



## Fine Jewellery, Watches & Silver, 22nd May, 2025 09:30

- 131 A pair of diamond earstuds, with an estimated total diamond carat weight of 0.50ct, flush-set to post fittings, stamped '750', measuring 0.5cm in diameter, total weight 1.22 grams. **£200-300**



- 132 Three Art Deco rings; comprising a five-stone diamond half-hoop ring, illusion-set with graduated old-cut and single-cut diamonds between tapered shoulders, metal stamped '18ct PLAT', size O; a diamond solitaire ring in an octagonal mount to a flat shank, two-toned metal marked '18ct & Pt', size M; and a wedding band with chevron engraved pattern, white metal marked 'platinum', size O; Total weight of items 6.9 grams (3). **£200-300**



- 133 An old-cut diamond solitaire ring, centred with an old European cut diamond of 5.8 mm, in a high claw setting between stepped shoulders set with single-cut diamonds, leading to a D-profile shank in white metal marked 'PLAT' and testing as platinum, size J, 3.3 grams. **£300-500**



- 134 An Art Deco synthetic sapphire and diamond bar brooch, the openwork lozenge-shaped plaque overlaid with a v-shaped central shield set with rose, single and brilliant-cut diamonds, highlighted by three calibre-cut synthetic sapphires, one loose, to two brilliant-cut diamond highlights to either side, approximately 0.70ct total, surface tested as platinum and 18ct, length 5.0cm, total weight 5.93 grams. **£200-300**



- 135 A diamond solitaire ring, comprising a central grain-set old mine-cut diamond of estimated 0.29ct, to a raised openwork gallery in white metal testing as 18ct, flanked by shoulders of geometric design, to a yellow metal shank testing as 18ct, size M, 2.5 grams. **£200-300**



## Fine Jewellery, Watches & Silver, 22nd May, 2025 09:30

- 136 A floral mourning brooch and two glass lockets; the mourning brooch of floral design with suspended pendants, comprised of eleven glazed compartments encasing locks of hair, in closed-back settings, inscriptions to reverse, and a hinged-pin fitting with C-clasp, unmarked pink metal testing as 9ct; together with two glazed lockets, one of oval form in unmarked pink metal, the other of rounded rectangular form, suspended by a chain with jump ring bail, in unmarked yellow metal, both testing as 9ct. (3) **£200-300**



- 137 A Modernist pendant, comprising a central spherical component with brushed textured detail, a semi-circular section removed from the central form to reveal a single cultured pearl suspended from a yellow metal wire, backed by a concave panel with brushed textured detail, the concave panel highlighted by a semi-circular panel, the top of the pendant featuring a semi-circular loop, the reverse of which features a pendant loop, pendant measures 7.5cm long x 4.8cm wide, all in yellow metal testing as 14ct. **£400-600**



- 138 Two chains; to include a long fancy link chain of 127cm in length, comprised of elongated oval links, with pierced design, to a C-spring clasp in yellow metal stamped "K.12" and a faceted curb link watch chain of 40.5cm, terminating with an Albert hook, in unmarked pink metal; both chains surface testing as 9ct. (2) **£700-900**



- 139 A diamond single-stone pendant necklace, the four-claw set brilliant-cut diamond, weighing 1.52ct, to a bifurcated tapered suspensory loop, suspended from a fox-tail link chain with spring-ring clasp, white metal stamped 14K, pendant length 1.2cm, chain length 42cm, total weight 2.45 grams. **£1,000-1,500**



- 140 A group of four chain necklaces, comprising three cable link chains with spring-ring clasps, and a fancy cable link chain with spring-ring clasp, surface testing 9ct. **£400-600**





## Fine Jewellery, Watches & Silver, 22nd May, 2025 09:30

- 141 A diamond and ruby panel ring, comprising a square panel grain-set in white metal with twenty-one rose-cut diamonds, detailed at each corner with a grain-set round mixed-cut ruby, to shoulders grain set with a single round mixed-cut ruby, to a yellow metal shank, surface tested as 18ct, size K. **£300-500**



- 142 Two Edwardian gem-set pendants; to include a target pendant decorated with a central collet-set garnet and seed pearl highlights; together with an openwork scroll pendant decorated throughout with seed pearls, and highlighted by an oval and a pear-shaped peridot in millegrain collet setting; both stamped 15ct, lengths 3.1cm and 5cm, total weight 7.35 grams. (2) **£200-300**



- 143 Of nautical interest; an Essex crystal brooch with bow surmount, the glass drop depicting nautical signal flags from A-Z, the yellow metal bow surmount marked 'B&W 15ct', with C-clasp brooch pin fitting to the reverse, the brooch measuring approximately 36.0mm in length; 7.3 grams. **£300-500**



- 144 A figaro link necklace, to a C-spring clasp, with broken safety chain, stamped "9ct", 51.5cm in length, 32.5 grams. **£300-500**



- 145 A diamond solitaire ring, claw-set with a round brilliant-cut diamond with an estimated carat weight of 0.87ct, pierced heart gallery, between tapered shoulders to white metal shank marked 'PLAT', size I, 2.1 grams. **£700-900**



## Fine Jewellery, Watches & Silver, 22nd May, 2025 09:30

- 146 A three-stone diamond ring, comprising three claw-set graduated brilliant-cut diamonds, with an estimated total carat weight of 0.46ct, to a tapering platinum ring shank of D-profile, Birmingham assay mark, internally engraved 'one love' with a flush-set diamond accent, size I ½, 5.0 grams. **£200-300**



- 147 A ruby stick pin, collet-set with an oval-cut ruby of 8.0 x 5.3 mm, to a plain pin stem with safety catch, yellow metal struck with Dutch oak leaf assay mark for 14ct, 6.5 cm long, 2.4 grams. **£250-350**



- 148 A pinchbeck guard chain, featuring decorative spacers at equal intervals, approximately 66cm in length, no clasp, adorned with an Albert hook marked "18", a plain bale marked 'KT14', and a 9ct fob seal engraved with the letter 'A', the fob seal with Birmingham hallmarks dated 1897. **£200-300**



- 149 Cartier - a trinity ring in ceramic, classic model, composed of three interlocking bands including a polished band, one pavé-set with three rows of brilliant-cut diamonds, and one black ceramic band, signed and numbered 'RT1949', marked 'Pt950', size K (official size 50), ring band 5.4 mm wide, 15.7 grams. **£2,000-3,000**



- 150 A multi-row chain bracelet, comprising five rows of wheat-link chain, grouped at even intervals by stations stylised as wheat-link chain panels, completed with a concealed box clasp with additional safety catch, in yellow metal marked '750' and surface tested as 18ct, approximately 18.0cm in length, 2.0cm at widest point. **£3,000-5,000**



## Fine Jewellery, Watches & Silver, 22nd May, 2025 09:30

- 151 A figaro link watch chain, comprising figaro links stamped '18' and surface testing as 18ct, with a T-bar attachment, stamped '18' and 'GB', terminated with a swivel clip marked '18' and a spring ring clasp, overall length 35.0cm. **£2,000-3,000**



- 152 A 9ct white gold diamond-set tennis bracelet; comprised of interlocking semi-round links, alternately set with round-cut diamonds of approximately 1.5mm, and beaded decorations, to a tongue clasp with safety catch, convention marks for 9ct, approximately 19.0cm in length, 8.8 grams. **£200-300**



- 153 A pair of emerald and diamond-set hoop earrings, of ridged design, featuring alternating rows of round-cut emeralds and diamonds, with post fittings and hinged backs, in yellow metal marked '14K' and '585'; 3.9 grams. **£150-250**



- 154 Two seal rings; The first an intaglio ring featuring a cushion-shaped smoky quartz, depicted with a centurion, the smoky quartz bezel set in yellow metal, extending to a yellow metal ring shank marked '14K' and 'FAH', size P; the second featuring a rectangular uncarved carnelian seal, collet set in yellow metal surface testing as 9ct with a 14ct section to the reverse of the ring shank, size O. (2) **£250-350**



- 155 A diamond and tanzanite dress ring by Iliana, the oval-shaped tanzanite, measuring approximately 8.35mm x 6.25mm x 3.9mm, flanked by two rows of channel-set princess-cut diamonds, approximately 4ct total, mounted in 18ct yellow gold, stamped with UK hallmark, signed, ring size N, total weight 7.35 grams. **£200-300**



## Fine Jewellery, Watches & Silver, 22nd May, 2025 09:30

- 156 A fancy link guard chain, featuring a single row of fancy-link yellow metal chain surface testing as 14ct, with a decorative split ring surface testing as base metal, completed with a later-added base metal spring ring clasp, approximately 121.0 cm. **£1,500-2,000**



- 157 A diamond eternity ring, with an estimated total diamond weight of 1.88ct, comprising nineteen round brilliant-cut diamonds of 3.0mm in illusion settings, in unmarked white metal testing as platinum, cased in Garrard box, size O, 4.3 grams. **£400-600**



- 158 A fancy-coloured diamond single-stone ring, the four-claw set heart-shaped diamond ring, weighing 2.03ct, assessed as greyish yellow, mounted in yellow metal stamped '585', ring size O, total weight 3.10 grams. **£1,000-1,500**



- 159 Two cameo rings, the first comprising a cameo flanked by two rows of seed pearls, connected with six individual wire bands, with French head assay mark (indicating 18ct gold), size O; together with a 9ct gold cameo ring, with diamond-set shoulders, size M. **£200-300**



- 160 A pair of rope twist earrings, featuring intertwined hollow tubular wires, forming an elongated hoop, to omega clip fittings, in unmarked yellow metal surface testing as 18ct, measuring approximately 3.6 cm x 1.0 cm. **£800-1,200**





## Fine Jewellery, Watches & Silver, 22nd May, 2025 09:30

- 161 A group of 19th century split rings; comprising thirty-four split rings, some with engraved detail, surface tested as 14ct. **£2,000-3,000**



- 162 A diamond single-stone ring in 22ct yellow gold, the brilliant-cut diamond of an approximately 0.30ct, mounted in eight claw setting, British hallmarks, ring size M, total weight 6.10 grams. **£400-600**



- 163 A ruby and diamond-set half-hoop ring, featuring three mixed-cut rubies, accented by round brilliant cut diamonds, in an 18ct yellow gold mount, hallmarked London, 1980, size N, together with a trillion-cut blue topaz ring, in 9ct yellow gold, hallmarked Sheffield 1990, size N; Total weight 7.5 grams (2). **£250-350**



- 164 A diamond solitaire pendant on chain, featuring a central round brilliant diamond with an estimated weight of 0.22ct, to a serpentine-link chain with bolt ring catch marked '585', the necklace measuring approximately 49cm; 4.0 grams. **£250-350**



- 165 A cultured pearl and imitation pearl necklace and earring suite set with emerald and diamond; the row of sixty-six 6mm white cultured pearl and imitation pearl decorated to the front with a brilliant-cut diamond pave-set link suspending a similarly-set bifurcated drop highlighted by a pear-shaped emerald, measuring approximately 9.2mm x 6mm x 4.4mm, to a slide-in depress reeded oval clasp; together with a pair of earrings en suite, to post fittings, diamonds approximately 1ct total, surface tested as 14ct, necklace length 48.8cm, earring length 6.5cm, total weight 65.73 grams. (2) **£500-700**



## Fine Jewellery, Watches & Silver, 22nd May, 2025 09:30

- 166 A diamond-set signet ring in 14ct yellow gold, the oval ring head engraved with a family crest with half eagle and three fleur-de-lis, decorated with three old-cut diamonds with an estimated total weight of 0.17ct, Birmingham import marks, ring head 1.8 x 1.5 cm, size P, 16.7 grams. **£500-700**



- 167 A diamond and tanzanite ring by Iliana, the central oval-shaped tanzanite, measuring approximately 8.4mm x 6.5mm x 4.35mm, flanked by trios of brilliant and princess-cut diamonds, approximately 0.40ct total, mounted in 18ct white gold, signed, stamped with UK hallmark, ring size N, total weight 5.10 grams. **£200-300**



- 168 Cartier - the polished, square-edged band inset with eight later-added round brilliant-cut diamonds, of approximately 0.88ct total carat weight, width 6.5mm, signed Cartier, stamped 750, numbered 199673, ring size L, weight 8.1 grams.  
No box, no papers. **£400-600**



- 169 A diamond solitaire ring, comprising a central round brilliant cut diamond of approximately 0.21ct, in a platinum bar setting to a tapering platinum shank, London, makers mark 'RG', size M, 5.5 grams. **£200-300**

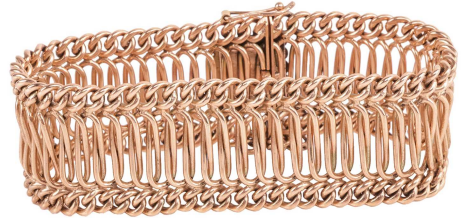


- 170 A tanzanite and diamond-set ring and an 18ct white gold diamond-set ring; the tanzanite ring comprising a claw-set oval-cut tanzanite of 8.1cm x 6.2cm x 3.6cm, flanked by a diamond-set halo and pave-set diamond shoulders, featuring a double row of brown diamonds flanked by two rows of brilliant-cut colourless diamonds, to a tapering white metal shank, marked '14K', size M, the 18ct white gold band ring set with an off-centre channel of brilliant-cut diamonds, the band featuring a central curved notch for the band to sit flush with the tanzanite ring, size M; Total weight 10.2 grams (2). **£400-600**



## Fine Jewellery, Watches & Silver, 22nd May, 2025 09:30

- 171 A link bracelet in 9ct gold, comprising a central row of elongated oval interwoven links flanked to top and base by a row of curb link chain, completed with an integral box clasp and additional safety catch and chain, 2.5cm wide, inner circumference approximately 16.5cm. **£1,000-1,500**



- 172 An emerald and diamond three-stone ring, the central claw-set square cushion-shaped emerald, measuring approximately 5.7mm x 5.5mm x 3.3mm, flanked by similarly-set old-cut diamonds, approximately 0.80ct total, surface tested as 18ct, ring size K, total weight 3.66 grams. **£700-900**



- 173 A watch chain in 15ct rose gold, comprising a series of fetter links, terminated with a T-bar and a swivel clip, struck with British marks '625', attached with a suspension loop in 9ct gold with London import marks, and a heart-shaped locket marked '9ct Back & Front', 37.0 cm long, 36.1 grams. (34.6 grams without locket) **£1,000-1,500**



- 174 A 9ct charm bracelet, decorated with thirteen charms such as a windmill, two heart lockets, an elephant and a boot-house, some stamped with UK hallmark for 9ct gold, to a 9ct yellow gold flat-curb link chain stamped with partial UK hallmark, inner diameter 5.5cm, total weight 72.21 grams. **£1,500-2,000**



- 175 A diamond-set cluster ring, with an estimated total diamond weight of 0.99ct, comprising a central princess-cut diamond measuring 3.5mm x 3.5mm, encircled by two pavé-set rows of brilliant-cut diamonds, to shoulders further pavé-set with brilliant-cut diamonds, white metal surface tested as 18ct, size M, 3.5 grams. **£400-600**



## Fine Jewellery, Watches & Silver, 22nd May, 2025 09:30

- 176 An aquamarine and diamond halo pendant on chain, claw-set with an oval-cut aquamarine of 8.8 x 6.7 x 3.9 mm, to a diamond-set surround with scalloped edges, to a tapered bail in white metal marked '14K', 1.9 cm drop; on a 41.0 cm long Singapore link chain with lobster clasp, stamped 'Italy 14K'; total weight of item 3.7 grams. **£200-300**



- 177 An oval emerald target ring in 18ct gold, centred with an oval emerald cabochon of 6.9 x 4.8 x 3.5 mm, collet-set within a two-toned concentric surround, channel-set with a vertical row of calibre-cut diamonds, between beaded shoulders to tapering flat shank, signed Bernadine Jacot, maker's mark Joe Cattermole, London 1994, ring head 1.7 x 1.4 cm, size L, 8.6 grams. **£300-500**



- 178 A small group of jewellery items; to include an oval onyx locket pendant, with ivy leaf detail to front in yellow and pink gold with seed pearl accents and a velvet-lined glazed compartment to reverse, jump ring bail with hallmarks for 9ct; a pendant of ovoid form, studded with simulated turquoise cabochons, in yellow metal stamped "9ct" to reverse; a bar brooch in the form of a branch with ivy leaf detail, suspending a heart-shaped pendant with a seed pearl to centre, with hallmarks for 9ct gold and a base metal pin fitting; together with a double-stickpin (inseparables), topped with seed pearls and connected with a length of box chain with gourd-shaped bead drops, featuring engraved detail and seed pearl terminations, in unmarked yellow metal surface testing as 14ct. (4) **£300-500**



- 179 A long fancy link chain, comprising a series of flat curb links with rectangular motifs, completed with a lobster clasp, unmarked yellow metal testing as 18ct, overall length 80.0 cm, 54.4 grams. **£2,000-3,000**



- 180 A diamond-set dress ring, the central cluster set with round brilliant cut diamonds and flanked by three rows of tapered baguette-cut diamonds, in a stepped design, to a white metal band marked '18K', with maker's mark 'Iliana', size N ½; 4.7 grams. **£300-500**





Fine Jewellery, Watches & Silver, 22nd May, 2025 09:30

- 181 A diamond-set ring, composed of a split shank with flat shoulders, claw-set with an old-cut diamond of 0.54ct, to two rows of channel-set single-cut diamonds, white metal marked '14K', size L, 3.7 grams. **£300-500**



- 182 A diamond-set panel ring in 18ct white gold, comprising a curved panel invisibly-set with sixty-three princess-cut diamonds, to shoulders each grain-set with eight brilliant-cut diamonds in a pear-shaped cluster, to a tapering shank stamped 'Iliana', Birmingham hallmarks, size O½, 8.1 grams. **£400-600**



- 183 A two-toned interwoven link bracelet, leading to a push bar catch and safety clasp marked 'K18', with an additional fancy link safety chain, the inner diameter measuring approximately 17cm, 77.8 grams. **£3,000-5,000**



- 184 A diamond and ruby dress ring, of openwork and bombe design, four-claw set throughout with twenty-five graduated old brilliant and cushion-shaped diamonds, approximately 2.35ct total, highlighted by four slightly graduated circular-cut rubies, to trifurcated tapered shoulders, surface tested as 18ct, ring size L, total weight 9.89 grams. **£1,000-1,500**



- 185 A sapphire and diamond-set hinged bangle, the centre featuring a twisted motif with round brilliant cut diamonds and calibre-cut sapphires, flanked by channel-set calibre-cut sapphires, in a yellow metal mount marked '750' with push bar clasp and safety catches, the inner diameter measuring approximately 61mm, together with a pair of sapphire-set floral design earrings, in yellow metal surface tested as 18ct gold; 15.5 grams (2). **£600-800**



**Fine Jewellery, Watches & Silver, 22nd May, 2025 09:30**

- 186 Cartier - a trinity ring in ceramic, small model, composed of three interlocking bands including a polished band, one pavé-set with brilliant-cut diamonds throughout, and one black ceramic band, signed and numbered 'TR2446', marked '750', size K (official size 52), ring band 2.5 mm wide, total weight of item 5.2 grams.

RRP £6,750 incl. VAT **£1,500-2,000**



- 187 An 18ct diamond-set pendant in the form of a stylised star; set with a central round brilliant cut diamond of approximately 0.25ct, surrounded by six rays of graduated diamonds with sizes ranging from 2.5mm to 2mm, tapering to an elongated point, topped by a diamond set bail, in 18ct white gold with a laser hallmark for Sheffield and makers mark "GX", drop 4.3cm, weight 4.9 grams **£500-700**



- 188 A five-stone diamond ring; set with five round brilliant cut diamonds, with an estimated total carat weight of 0.46ct, prong set in white metal, to tapered shoulders and a shank of D-profile in yellow metal stamped "750", size N, 3.2 grams. **£300-500**



- 189 An emerald and diamond pendant and earrings set; the pendant of pear shape with a scrolled frame, encrusted with round brilliant-cut diamonds and circular-cut emeralds, with a damaged suspension loop, unmarked metal testing as silver on 18ct, 4.3 x 3.4 cm, 11.6 grams; the cluster pendant earrings set with pear-cut emerald drops, in articulated mounts and screw-back fittings, white metal testing as platinum, 3.5 cm drop, 5.1 grams. (2) **£600-800**



- 190 A Harlequin bracelet, comprising a series of gemstones in different cuts and graduated sizes, including examples of zircon, garnets, sapphire and amethyst etc., set in hinged collets, attached to gate links and a tongue clasp, unmarked metal testing as 9ct, overall length 18.5 cm, 6.5 grams. **£200-300**



## Fine Jewellery, Watches & Silver, 22nd May, 2025 09:30

- 191 A diamond solitaire ring, with an estimated diamond weight of 0.51ct, claw-set with a brilliant-cut diamond of 5.2mm, tapered chenier shoulders to D-profile shank, unmarked yellow metal testing as 18ct, size 1½, 2.3 grams. **£300-500**



- 192 Two gem-set signet rings; The first a synthetic ruby ring comprising a mixed-square cut synthetic ruby of approximately 6.7mm x 6.7mm x 3.0mm, flush-set with looped prongs to the underside of the setting, to a flat yellow metal band surface testing as 18ct, size G ½; The second a garnet ring, comprising a mixed-baguette cut garnet with canted corners, of deep brownish-purple colour, collet set to a tapering yellow metal ring shank marked '18ct', makers mark 'A.H&S', size J. **£200-300**



- 193 A diamond-set two-toned dress ring of belt design, with an estimated total diamond weight of 0.27ct, the crescent aperture tension-set with a round brilliant-cut diamond of 3.3mm, leading to a tapering flat band with shoulders flush-set with diamond accents, bi-coloured metal testing as 18ct, band measuring 5.5 - 7.5 mm, size N, 9.6 grams. **£400-600**



- 194 A cultured pearl, diamond and paste ring, of bi-coloured design, the 6.8mm white cultured pearl, with rose and green overtones, within a ribbon-like surround decorated with reeded bows and brilliant-cut diamonds and circular-cut paste, surface tested 9ct, ring size O, total weight 4.43 grams. **£300-500**



- 195 A tourmaline and diamond dress ring by H.Stern, comprising two circular-cut yellowish-green tourmalines and two diamond accents, between bypass shoulders leading to a thin flat shank, in yellow metal stamped '750' with maker's mark, size M, 1.9 grams; together with a set of rough mineral specimen and papers. **£200-300**



## Fine Jewellery, Watches & Silver, 22nd May, 2025 09:30

- 196 A 9ct gold bracelet, the curb links leading to a bolt ring clasp and safety chain, the bracelet measuring approximately 16.0cm, hallmarked London, 1979; 22.7 grams. **£300-500**



- 197 A fancy-coloured diamond single-stone ring, the four-claw set brilliant-cut diamond, weighing 2.23ct, assessed as fancy greyish yellow, within a surround of twenty similarly cut diamonds, approximately 0.20ct total, mounted in yellow metal stamped '14 585', ring size L 1/2, total weight 2.84 grams. **£1,500-2,000**



- 198 A textured link bracelet, comprised of alternating polished and textured oval and diamond-shaped links, featuring geometric patterns, to a hidden tongue clasp with double safety catch, in yellow metal stamped '750' with maker's mark 'MAR', dimensions 19.3cm x 2.5cm, 48.0 grams. **£1,800-2,000**



- 199 A sapphire and diamond-set ballerina ring, the central oval-cut sapphire surrounded by two undulating rows of tapered baguette sapphires, with four intersecting diamond-set segments, to bifurcated shoulders leading to a yellow metal shank marked '750'; size P; 9.5 grams. **£500-700**



- 200 A diamond close bangle, with an estimated total diamond weight of 6.68ct, comprising seventy-six princess-cut diamonds in claw settings, in yellow metal marked '18K 750', inner diameter 6.1 cm, 15.8 grams. **£2,000-3,000**





## Fine Jewellery, Watches & Silver, 22nd May, 2025 09:30

- 201 A tanzanite and diamond dress ring in platinum, claw-set to the centre with a large cushion-cut tanzanite of 11.2 x 9.5 x 6.4 mm, flanked by princess-cut diamonds on stepped shoulders, with an estimated total weight of 0.30ct, D-profile shank with flat edge in platinum, Sheffield assay marks, size N, 8.0 grams. **£500-700**



- 202 A snake chain necklace, the 5mm wide chain leading to a double fold-over clasp, in yellow metal marked '14K', the necklace measuring approximately 43.5cm. **£1,500-2,000**



- 203 Cartier - a Juste un Clou ring, of nail form with a wrap-around design, classic model, signed and numbered, with French eagle head assay marks (indicates 18ct), ring size Q, band measures 2.7 mm wide, total weight of item 8.4 grams. No box no papers. **£1,200-1,800**



- 204 A diamond and ruby brooch; the stylised textured fish, highlighted by three circular-cut rubies, and four brilliant-cut diamonds, approximately 0.90ct total, stamped with maker's mark MN and 18K, length 8.1cm, total weight 22.36 grams. **£800-1,200**



- 205 A diamond-set bracelet by Marco Bicego, from the Masai collection, comprising three strands of coiled bands, square intervals pave-set with round diamond accents, clasp with push-in thumbpiece, signed and struck with Italian assay mark '750', 18.0 cm in length, 18.8 grams. **£800-1,200**



## Fine Jewellery, Watches & Silver, 22nd May, 2025 09:30

- 206 A colour-change garnet and diamond dress ring by Kat Florence; featuring a pear-cut colour change garnet of approximately 1.17ct, measuring 8.0mm x 5.2mm x 3.5mm, to a raised prong setting with diamond-set gallery, above a stylized band with pave-set diamond shoulders, and a knife-edge shank tapering to a point, with inner sleeve for comfort, Birmingham hallmarks for 18ct gold, size M ½, weight 5.8 grams. With associated box and packaging. **£600-800**



- 207 A collection of early earrings, possibly late Roman/early Byzantine Empire; consisting of four pairs of hoop earrings, the largest of which measuring approximately 1.9cm in diameter, formed of rounded wire of 2.2mm tapering to 0.9mm, with a twisted closure at the apex; another pair with a diameter of 1.6cm, formed of rounded wire of 0.8mm, each featuring a convex discoid plaque of 0.8cm, with raised border and a central granule, with a twisted closure to reverse; together with another pair of 1.5cm diameter, formed of rounded wire of 1.2mm, featuring a convex oval decoration of 5.2 x 3.2mm, and a twisted wire and hook closure; and a pair of similar design, measuring approximately 1.5cm in diameter, formed of a double twisted wire of 1.5mm, with a convex oval decoration at the apex, with hook fitting; all in unmarked yellow metal, surface testing as high carat. (4) **£400-600**



- 208 A gem-set dress ring, comprising a central collet-set round mixed-cut synthetic rutile, measuring 10.5mm in diameter, flanked each side by a round mixed-cut blue zircon of 7.2mm in diameter, the collets interspersed by large spherical forms, to a bifurcated yellow metal shank surface testing as 18ct, the ring shank marked internally 'Jobst' for Kurt Jobst, ring head measuring 3.0cm wide x 1.2cm wide x 1.0cm tall, size L. **£400-600**



- 209 A diamond-set necklace, the crescent-shaped central panel encrusted with brilliant-cut diamonds, attached to a bead link chain, completed with a hook clasp, unmarked yellow metal testing as 18ct, overall length 54.0 cm, 20.0 grams. **£500-700**



## Fine Jewellery, Watches & Silver, 22nd May, 2025 09:30

- 210 An Art Deco-style ring set with sapphires, centred with a circular-cut white sapphire of 6.5 x 4.5 mm, in a raised octagonal millgrained mount, gallery set four sapphire baguettes, between pierced and engraved shoulders to flat shank, white metal marked '18K', size L½, 3.5 grams. **£300-500**



- 211 Four lockets; comprising a circular locket of linear design, open to reveal two compartments, marked '9ct'; a pendant locket with glazed front and hidden compartment to the reverse, scrolled mount in base metal with hinged cover testing as 9ct; a heart locket, the front featuring a black enamel shield and scrollwork, similar detailing to the reverse, open to reveal two glazed compartments with seed pearls and hair lock, in yellow metal tested as 9ct with base metal pendant loop; and another heart locket, of textured and floral design, open to reveal two compartments, in yellow metal marked '14ct'. (4) **£200-300**



- 212 A diamond solitaire ring of floral design, comprising a central double-claw set old European cut diamond of estimated 0.33ct, to a raised white metal gallery testing as platinum, encircled by a border of floral design with looped detail, flanked by shoulders each set with two polki diamonds, to a white metal shank testing as 18ct, size L, 5.1 grams. **£200-300**



- 213 A fancy bar link chain, comprising a series of pierced hollow bar links of octagonal form, with star motifs and openwork detail, interspersed by fancy double loop cable link sections, one link broken, measuring 131.5cm in length, in yellow metal surface testing as 14ct. **£800-1,200**



- 214 A Victorian hinged bangle in 15ct yellow gold, of Etruscan Revival design, half decorated with bands and applied twisted cables, in yellow and pink gold, to a polished ground, hinged and secured with a tongue clasp, width 2.5cm, 6.5cm diameter, hallmarks for Chester 1879 and makers mark "WGM".  
46.0 **£1,800-2,200**



## Fine Jewellery, Watches & Silver, 22nd May, 2025 09:30

- 215 A diamond-set duette brooch, comprising two detachable scrolling forms, each channel-set with a central row of baguette-cut diamonds, radiated by scrolling forms pavé-set with single-cut diamonds, accented by a row of three collet-set brilliant-cut diamonds to the edge of the piece, the diamonds set in white metal testing as platinum, both components fitted with a white metal double pin brooch fitting, surface testing as 14ct, clipped to a white metal mount testing as 9ct for brooch conversion, with a single pin and trombone clasp, each pin measuring 3.5cm x 3.25cm, combining to a single brooch which measures 5.75cm x 3.25cm; Gross weight 25.1 grams. **£1,200-1,800**



- 216 An early 19th-Century bracelet of grape and vine leaves design, comprising graduated openwork links intricately chased with scrolled foliates, each applied with textured vine leaves, the middle segments are decorated with sew-on seed pearls as fruiting grapes, concealed tongue clasp, unmarked yellow metal testing as 18ct, in fitted case, overall length 17.4 cm, 25.6 grams. **£1,000-1,500**



- 217 An early 20th Century watch chain and accessories, the double-row mesh chain interspersed with two sliding onyx and seed pearl spacers of oval design, leading to a pocket watch key fob, a seal and propelling pencil, each piece with onyx and seed pearl design, terminating with lobster swivel catch, struck with French eagle head assay mark indicating 18ct, the chain measuring approximately 39cm. **£1,000-1,500**



- 218 A Belle Epoque diamond brooch, of geometric design, the rectangular openwork mount with millgrain edges, set with vari-sized old European-cut diamonds with an estimated total weight of 3.34ct, fitted with a hinged pin and trombone clasp, unmarked white metal testing as platinum, 6.2 x 1.0 cm, 10.2 grams. **£1,000-1,500**



- 219 A cultured pearl bracelet; composed of nine openwork sections, each decorated with five 3.3mm - 3.7mm white cultured pearls, with rose, green and silver overtones, connected by cable-link chain, to fold-over clasp, stamped 9ct, length 41.2cm. **£2,000-3,000**





## Fine Jewellery, Watches & Silver, 22nd May, 2025 09:30

- 220 An Art Deco emerald and diamond panel ring, the octagonal ring head centred with a step-cut emerald with canted corners, with bright bluish-green body colour, of 5.9 x 5.0 x 4.8 mm, in a tiered surround set with single-cut diamonds edged with millgrain details, gallery pierced with fish scale pattern, chenier shoulders to knife-edged shank, unmarked white metal testing as platinum, ring head 1.6 x 1.5 cm, size Q, 4.1 grams. **£800-1,200**



- 221 A fancy link guard chain, featuring a single row of fancy link in yellow metal testing as 18ct, connected to an Albert hook marked '18K', approximately 174.0cm in length. **£2,500-3,500**



- 222 A sapphire and diamond duette brooch, comprising two detachable components, each claw-set with multiple graduating rows of round-cut sapphires of vivid blue colour, one section featuring a later-added cluster comprising a central old European-cut diamond encircled by six round-cut sapphires of deep blue colour, both sections featuring scrolling motifs in yellow metal with openwork detail, double-pin fittings with a yellow metal brooch conversion mount with a single pin and lever clasp, the reverse of each section engraved 'Garrard', yellow metal testing as 14ct, combined measuring approximately 5.1cm x 5.7cm, total weight 29.1 grams. **£1,500-2,000**



- 223 An early 20th century diamond-set brooch; set with a central old European-cut diamond of approximately 1.81ct, flanked above and below by a further old European-cut diamond of 0.93ct and a transitional-cut of 0.94ct, to a cartouche-shaped surmount, intricately pierced with geometric openwork and set with a variety of round-cut diamonds ranging in size from 2.25mm to 1.0mm, set within collet and bead mounts with millegrain detailing, fitted with a hinged pin with C-scroll catch to reverse; white metal mount surface testing as platinum, white metal fittings surface testing as 18ct, brooch measuring 6.5 cm x 2.2 cm, weight 17.4 grams. **£3,000-4,000**



- 224 An Edwardian five stone diamond pendant; featuring five old brilliant cut diamonds with an estimated total carat weight of 1.43ct, graduating in size from approximately 0.49ct to 0.21ct, in silver bezel settings with millegrain edge, to yellow metal coronet mounts, surface testing as 18ct, connected by knife-edge links, to a white metal chain, with C-spring clasp, and additional jump ring, surface testing as 14ct, drop 3.7cm x 1.6cm, length 47.0cm, 4.4 grams. **£1,000-1,500**



## Fine Jewellery, Watches & Silver, 22nd May, 2025 09:30

- 225 A two-tone brick-link collar necklace, comprising a central segment of white metal brick links, flanked either side by a double row of yellow metal brick links, completed by a box clasp and additional safety chain, the necklace measuring approximately 44.0cm in length and 0.9cm in width, surface tested as 18ct, 42.2 grams. **£1,500-2,000**



- 226 An early to mid 19th Century citrine parure, designed as a graduating row of oval-cut citrines suspending a fringe of pear-shaped citrine drops, all within scrolling foliate frames with acanthus leaf motifs, the brooch, bracelet and earclips en suite, with later modifications, surface tested as 18ct, lengths 37.0cm, 5.0cm, 16.5cm and 5.0cm, in fitted box, total weight 90.94 grams (4). **£3,000-5,000**



- 227 A Victorian natural saltwater pearl, diamond and enamel brooch, of oval form, centred with three graduated pearls, the largest measuring 7.4 mm across, flanking two foliate motifs centred with old-cut diamonds and encrusted with diamond chips, within a scalloped frame with diamond-set intervals, black enamel border and engraving details, hinged pin to verso and a later-added catch, unmarked yellow metal testing as 18ct, 3.5 cm wide, in John & Charles Turner fitted case, 10.3 grams.  
The item is subjected to a verbal report from Gemmological Certification Services confirming they are natural saltwater pearl. Ref.: 5785-2334 **£1,000-1,500**



- 228 A Late Art Deco diamond-set link bracelet, with an estimated total diamond weight of 4.20ct, comprising a series of pierced floral links with millgrain details, flanked by bar and annular links, encrusted with old-cut and single-cut diamonds throughout, completed with conforming lever clasp and safety chain, unmarked white metal testing as platinum, overall length 17.0 cm, 22.7 grams. **£1,200-1,800**



- 229 An Art Deco diamond and emerald dress ring, the navette-shaped ring head centred with an old European-cut diamond of 6.4 mm, with an estimated weight of 1.02ct, flanked by two triangular-cut diamonds and channel-set square emeralds, further bordered by diamond accents in square millgrained mounts, leading to a tapered shank in white metal stamped '100 Irid 900 Pt', size L, 4.0 grams. **£1,500-2,500**



## Fine Jewellery, Watches & Silver, 22nd May, 2025 09:30

- 230 A mid-20th Century emerald and diamond bracelet, comprising a central claw-set cushion-shaped emerald cabochon of 14.1mm x 12.0mm x 6.0mm, encircled by claw-set graduating old-mine and old-European cut diamonds, the central emerald flanked either side with a curved link, channel-set with four baguette-cut diamonds, connecting the central segment to two stylised tulip-shaped sections, featuring lightly scalloped edges and pavé-set with graduating old-European cut diamonds, the tulip forms each encircling a claw-set oval-shaped emerald cabochon, further linked by another diamond-set curved link to a smaller section of replicated tulip design, also pavé-set with old-European cut diamonds and encircling an oval-shaped emerald cabochon, the smaller tulip forms accented by a single claw-set old-European cut diamond to the end of the segment, the bracelet highlighted at each end with a triple-row of six claw-set old-mine cut diamonds, the bracelet terminated at each end by a motif of scrolled design, pavé-set with single-cut diamonds, the bracelet completed with a concealed box clasp and additional safety catch, the thumbpiece featuring a single column of three graduating collet-set old-mine cut diamonds, the bracelet measuring approximately 17.0cm in length, 2.7cm at widest point, accompanied by Collingwood Ltd box, 63.3 grams. **£20,000-30,000**



- 231 An emerald-cut diamond trilogy ring, with an estimated total diamond weight of 3.17ct, claw-set to the centre with an emerald-cut diamond of 10.0 x 6.9 x 4.6 mm, flanked between trumpeted shoulders set with baguette-cut diamonds, leading to D-profile shank in white metal testing as platinum, size J, 4.4 grams. **£3,500-5,500**



- 232 Tiffany & Co. - a pair of yellow diamond 'Soleste' ear studs; each set with a central cushion-cut yellow diamond of approximately 0.43ct, with yellow metal claws to each of the four corners, to a stepped double halo surround of forty round brilliant cut white diamonds, measuring approximately 1.0mm each, in white metal cut-down settings, with serial number inscribed to reverse, signed "T&Co", with stamps for "PT950" and "AU750", to posts and associated alpha back fittings, dimensions of stud head 9.5mm, total weight 5.4 grams. **£3,000-5,000**



- 233 Tiffany & Co. - a yellow diamond 'Soleste' necklace, set with a central cushion-cut yellow diamond of approximately 0.46ct, with yellow gold claws to each of the four corners, to a stepped double halo surround of forty round brilliant cut white diamonds, measuring approximately 1.0mm each, in cut-down settings, with serial number inscribed to reverse, suspended from a trace chain of 41.0cm, terminating in a lobster clasp, and link signed "TIFFANY & Co", with hallmarks for platinum and 18ct gold (prongs), pendant dimensions 9.5mm, weight 4.4 grams. No box, no papers. **£2,000-3,000**





## Fine Jewellery, Watches & Silver, 22nd May, 2025 09:30

- 234 A Modernist diamond-set ring; the emerald-cut diamond of 2.22ct, set off-centre within an asymmetrical mount with one square edged shoulder and the other rounded, ring head measuring approximately 9.6mm wide, tapering to a band of 3.7mm, in yellow metal surface testing as 18ct, size J, total weight 9.14 grams.

Accompanied by a De Beers diamond grading report number 010000290256, inscription number 37739961, stating diamond colour grade E, clarity grade VS2, no fluorescence. **£6,500-7,500**



- 235 Van Cleef & Arpels - a 'Vintage Alhambra' bracelet set with mother-of-pearl, comprising an 18ct yellow gold chain with five quatrefoil spacers set with mother-of-pearl panels, completed with a signed and numbered lobster clasp, French convention marks, boxed, 19.0cm, 9.9 grams. **£1,500-2,000**



- 236 A modernist diamond ring, featuring a central round brilliant-cut diamond of estimated 1.56ct, bezel-set to a circular ring head with stepped detail, to a tapering yellow metal ring shank marked '18K' and signed 'Jobst' for Kurt Jobst of South Africa, size J. **£3,000-5,000**



- 237 A diamond single-stone pendant necklace, the collet-set brilliant-cut diamond, weighing approximately 1.12ct, loose hung to a knife-edge bar within a rectangular outer edge, stamped 18ct, suspended from a box-link chain with spring-ring clasp, stamped 925, pendant length 3.1cm, chain length 60cm. **£2,000-3,000**



- 238 Georg Jensen - a 'Dew Drop' necklace with rock crystal drop pendant, the torque necklace of 1.8 cm tapering to a stylised hook fastening to centre, suspending a detachable drop pendant set with a polished rock crystal of 3.8 x 3 x 1.5 mm, pendant length 7.5 cm, inner circumference of necklace 41cm, both designed by Vivianna Torun Bülow-Hübe, No. 160 & No. 311, signed Torun and Georg Jensen, stamped '925S', in original boxes. Total weight 115.2 grams. **£700-900**





## Fine Jewellery, Watches & Silver, 22nd May, 2025 09:30

- 239 A Georg Jensen foliate brooch, of rectangular form in repousse design, brooch fittings to the back, design No. 66, post-1945 maker's mark, stamped 'Sterling', 3.0 cm wide; together with a Scandinavian Viking longship brooch marked '835' and maker's mark 'WB' in a cartouche; Total weight of items 14.1 grams. (2) **£150-250**



- 240 A George III lover's eye portrait miniature ring, the rectangular glazed plaque depicting an eye, within a seed pearl border, in closed-back setting, to trifurcated foliate leaf shoulders, surface tested as 9ct, ring size N, total weight 2.49 grams. Ivory certification reference 65PFM2M8 **£400-600**



- 241 A silhouette miniature, by Miers; The cream oval-shaped plaque depicting a man in profile, within a polished border with suspension loop, the reverse with glazed compartment comprising a lock of hair, surface tested as 9ct, total weight 8.56 grams. Ivory certification reference SK372ATY **£150-250**



- 242 An early 19th century mourning portrait miniature pendant, the oval-shaped cream ivory plaque depicting a man in profile, within a scroll and foliate border, the reverse to a glaze compartment comprising of a lock of hair and the letter C J, glazed with an opalescent glass, to a suspensory loop, surface tested as 14ct, length 4.1cm, total weight 13.08 grams. Ivory certification reference KJ7BBA7Y **£150-250**



- 243 Two George III fichu brooches and a clasp; including a brooch and a clasp both depicting men's silhouettes on cream card background within a rectangular glazed compartment and polished border, surface tested as 9ct; and a mourning brooch decorated with braided hairwork within a foliate and scrolling border, surface tested as 14ct, all in closed-back setting; lengths 2.5cm, 2cm and 1.7cm, total weight 9.49 grams. (3) **£200-300**



## Fine Jewellery, Watches & Silver, 22nd May, 2025 09:30

- 244 An early 19th century miniature portrait of a young woman, attributed to Nicholas Frese, watercolour on ivory, the oval glazed frame depicting a woman in profile, within a polished border, bifurcated suspensory loop and bail, the reverse glazed compartment enclosing hairwork overlaid with initials GE, bears "Freese Miniature painter No 411 Strand" label verso, yellow metal surface tested as 9ct, dimensions 11.1cm x 7.3cm, total weight 56.44 grams.  
Ivory certification reference BTJSJC9Y **£600-800**



- 245 A portrait miniature of a lady, by Henry Eldridge, the oval-shaped glazed plaque depicting a lady in profile, within a polished border with bar and loop bail, dimensions 8.0cm x 4.9cm, total weight 26.48 grams.  
Ivory certification reference 7SNY7EB4 **£400-600**



- 246 An early 19th century portrait miniature of a lady, by EW Thomson, the glazed oval-shaped plaque depicting a lady in profile, watercolour on ivory, within a polished border with a tapered reeded suspensory loop and bail, the reverse glazed compartment signed "EW Thomson, Miniature Painter, New Bond Street", surface tested as 9ct, dimensions 8.4cm x 5.1cm, total weight 27.43 grams.  
Ivory certification reference QKGTHTHN **£150-250**



- 247 Patek Philippe - Two colour lithographic 'Limited Art Edition' prints, each depicting watch movements; the first depicting Calibre 315 SQR self-winding, perpetual calendar with fly-back date, moon phases and centre seconds (x/1999); the second depicting Annual Calendar, Moon Phases and Power Reserve Indicator - Calibre 315 S QA IRM LU (XII/1998); Each sheet measuring 42.1cm x 29.7cm (2). **£300-500**



- 248 A lady's diamond-set cocktail watch, featuring a seventeen-jewel manual-wind movement, the rectangular white dial featuring blue Arabic numerals in a case highlighted with pave-set diamonds, the crystal flanked by two baguette-cut diamonds each at twelve and six o'clock, the integral strap comprising fancy hexagonal-shaped links pave-set with diamonds, in unmarked white metal testing as platinum, with a push-bar clasp and additional safety catch, the case measuring approximately 10.0mm x 23.0mm, the inner circumference approximately 16.0cm; Gross weight 22.2 grams. **£600-800**



Fine Jewellery, Watches & Silver, 22nd May, 2025 09:30

- 249 A diamond and ruby-set concealed cocktail watch, comprising a central diamond-set motif highlighted with five collet-set rubies, the diamonds pave-set in borders with millegrain detail, the motif set to a trapezoid rose metal panel flanked each side by a row of claw-set rubies and a row of pave-set single and brilliant-cut diamonds, the diamonds set in mounts with engraved and millegrain detail, the top gem-set row concealed as a hinged thumbpiece which causes the trapezoid panel to open, revealing a manual-wind watch featuring a rose-tone dial marked 'Kingston', with engraved Arabic and dot numerals and blue poire hands, to a fancy H-link rose metal strap and a fold-over clasp marked '14K', with additional safety chain (chain surface tested as 9ct); Gross weight 63.0 grams. **£2,000-3,000**



- 250 A Vertex diamond-set cocktail watch, the circular white dial with baton numerals encircled by a scalloped bezel of twenty grain-set single-cut diamonds, accented by lugs of foliate design, further grain-set with single-cut diamonds, the case sides engraved with scrolled design, the case back marked 'platinum' and '131/1354' the watch featuring a Vertex Revue calibre seventeen jewel manual-wind movement, with a snake-link chain strap in white metal surface testing as 9ct, completed with a 9ct white gold fold over clasp, stamped 'JC&S', inner circumference approximately 17.5cm, boxed, 17.1 grams. **£200-300**



- 251 **Cartier**  
**Must de Cartier Colisee Gold-Vermeil Wrist Watch**  
**Reference:** 590002  
**Serial:** 044801  
**Bezel:** Smooth  
**Year:** circa 1980  
**Case Material:** Gold-Vermeil on Silver  
**Case Diameter:** Approximately 24mm  
**Dial:** Cream Enamel, Signed at ten o'clock, Blue Sword Hands  
**Numerals:** Black, Roman  
**Crown:** Blue Cabochon  
**Movement:** Cartier Seven-Jewel Quartz Movement  
**Strap:** Signed, Maroon Leather  
**Inner Circumference:** Approximately 19.5cm at widest  
**Buckle:** Gold-plated Buckle  
**Box:** Yes  
**Papers:** No  
**Gross Weight:** 19.8 grams **£500-700**



Fine Jewellery, Watches & Silver, 22nd May, 2025 09:30

252

**Rolex**  
**A Chrome-Plated Stainless Steel Wrist Watch**  
**Reference:** 3892  
**Serial:** 044416  
**Bezel:** Smooth  
**Year:** circa 1938  
**Case Material:** Chrome-plated Stainless Steel  
**Case Diameter:** Approximately 29mm  
**Dial:** Cream, Blue Syringe Hands  
**Numerals:** Arabic, Minute Track  
**Crown:** Fluted  
**Movement:** Rolex 15-Jewel Manual-Wind Movement  
**Complication:** Seconds subsidiary dial at six o'clock  
**Strap:** Brown Leather Bund Strap, After-Market  
**Inner Circumference:** Approximately 22cm at widest  
**Buckle:** Stainless Steel Buckle  
**Box:** No  
**Papers:** No  
**Gross Weight:** 36.6 grams **£300-500**



253

**Frederique Constant**  
**Gentleman's Wrist Watch**  
**Reference:** FC-303/310/315X4P4/5/6  
**Serial:** 1432419  
**Bezel:** Smooth, Stepped  
**Year:** circa 2000  
**Case Material:** Stainless Steel  
**Case Diameter:** 40mm  
**Dial:** White Enamel, Textured Central Oval, Black Poire and Leaf Hands  
**Numerals:** Roman, Black, Minute Track  
**Crown:** Signed, Fluted  
**Movement:** Frederique Constant ETA Calibre 2824-2 25-Jewel Automatic Movement, numbered 'DM 06/A7'  
**Complication:** Date aperture at six o'clock  
**Strap:** Stainless Steel, Five-link  
**Inner Circumference:** Approximately 19cm  
**Buckle:** Signed, Stainless Steel, Fold-over Push-deployment clasp  
**Box:** No  
**Papers:** No  
**Gross Weight:** 138.3 grams **£200-300**





Fine Jewellery, Watches & Silver, 22nd May, 2025 09:30

254

**Omega**  
**Constellation Chronometer Automatic**  
**Reference:** 1312  
**Serial:** 60222403  
**Bezel:** Smooth, Roman Numeral Detail  
**Year:** 1990s  
**Case Material:** Stainless Steel  
**Case Diameter:** Approximately 35mm  
**Dial:** Yellow, Cross-Hatch Engraving, Dauphine Hands  
**Numerals:** Baton. Roman Numerals to Bezel, Minute Track  
**Crown:** Signed, Fluted  
**Movement:** Automatic  
**Complication:** Date aperture at three o'clock  
**Strap:** Integral, Stainless Steel  
**Inner Circumference:** Approximately 18cm  
**Buckle:** Signed, Stainless Steel, Push Deployment Fold-Over Clasp  
**Box:** No  
**Papers:** No  
**Gross Weight:** 106.5 grams **£400-600**



255

**TAG Heuer**  
**Carrera Calibre 5**  
**Reference:** WV211M-0  
**Serial:** EKK7693  
**Bezel:** Black with Minute Markers  
**Year:** circa 2010  
**Case Material:** Stainless Steel  
**Case Diameter:** 39mm  
**Dial:** Black, Textured, Stainless Steel Stick Hands  
**Numerals:** Baton, Minute Track  
**Crown:** Signed, Fluted  
**Movement:** TAG Heuer Calibre 5 26-Jewel Automatic Movement, numbered 'DM 12/B 314' and 'SW200-1'  
**Complication:** Date Aperture at three o'clock  
**Strap:** Stainless Steel  
**Inner Circumference:** Approximately 18cm  
**Buckle:** Signed, Stainless Steel, Fold-Over Push Deployment Clasp  
**Box:** No  
**Papers:** No  
**Gross Weight:** 121.2 grams **£300-500**



Fine Jewellery, Watches & Silver, 22nd May, 2025 09:30

256

**Omega**  
**Constellation**  
**Reference:** 368.1201  
**Serial:** 80285087  
**Bezel:** Black Enamelled Roman Numerals  
**Year:** 2006  
**Case Material:** Stainless Steel  
**Case Diameter:** Approximately 35mm  
**Dial:** Grey, Cross-Hatch Texture, Luminous Dauphine Hands  
**Numerals:** Baton, Roman numerals to bezel  
**Crown:** Signed, Fluted  
**Movement:** Omega Calibre 1120 23-Jewel Automatic Movement, numbered '80285087' and marked 'V8XB4'  
**Complication:** Date aperture at three o'clock  
**Strap:** Integral, Stainless Steel  
**Inner Circumference:** Approximately 17cm  
**Buckle:** Signed, Stainless Steel, Fold-Over Clasp  
**Box:** No  
**Papers:** No  
**Gross Weight:** 94.3 grams **£400-600**



257

**Rolex**  
**Oysterdate Precision**  
**Reference:** 6694  
**Serial:** 7027803  
**Bezel:** Smooth  
**Year:** circa 1981  
**Case Material:** Stainless Steel  
**Case Diameter:** 34mm  
**Dial:** Black  
**Numerals:** Baton, Rolex Crown at twelve o'clock  
**Crown:** Signed, Fluted  
**Movement:** Rolex Calibre 1225 Seventeen-Jewel Manual-Wind Movement  
**Complication:** Date aperture with cyclops magnifier at three o'clock  
**Strap:** Stainless Steel Oyster Strap, marked '557' and '73350 19'  
**Inner Circumference:** Approximately 18cm  
**Buckle:** Signed, Stainless Steel, Fold-Over Clasp  
**Box:** No  
**Papers:** No  
**Gross Weight:** 84.1 grams **£1,000-1,500**



## Fine Jewellery, Watches & Silver, 22nd May, 2025 09:30

258

**Cartier**

**Must de Cartier Ronde Wrist Watch**

**Reference:** 1815-1

**Serial:** 005973

**Bezel:** Smooth

**Year:** 1980s

**Case Material:** '925' Convention Mark

**Case Diameter:** Approximately 32mm

**Dial:** White Enamel, Signed at ten o'clock, Blue Sword Hands

**Numerals:** Black, Roman

**Crown:** Blue Cabochon

**Movement:** Cartier Calibre 01401/1 Eight-Jewel Quartz

Movement

**Complication:** Seconds subsidiary dial at six o'clock

**Strap:** Blue Leather, Signed

**Inner Circumference:** Approximately 17cm

**Buckle:** Signed, Stainless Steel, Fold-Over Clasp

**Box:** No

**Papers:** No

**Gross Weight:** 46.8 grams **£500-700**



259

**Juvenia**

**An '18K' Wrist Watch**

**Reference:** 727680

**Bezel:** Squared, Textured

**Year:** circa 1965

**Case Material:** '18K' Yellow Gold

**Case Diameter:** Approximately 10mm

**Dial:** Squared, Textured

**Numerals:** Baton at twelve, three, six and nine o'clock

**Crown:** Signed, Fluted

**Movement:** Juvenia FHF Calibre 59-21 17-Jewel Manual-Wind

Movement

**Strap:** Integral, Squared, Textured

**Inner Circumference:** Approximately 17.5cm at widest

**Buckle:** Fold-over Clasp marked '750'

**Box:** No

**Papers:** No

**Gross Weight:** 41.7 grams **£1,000-2,000**



Fine Jewellery, Watches & Silver, 22nd May, 2025 09:30

- 260 **Tissot**  
**A 9ct Wrist Watch**  
**Reference:** 1061  
**Serial:** 78001  
**Bezel:** Smooth  
**Year:** circa 1970  
**Case Material:** 9ct Gold  
**Case Diameter:** Approximately 19cm  
**Dial:** Silvered, Sword Hands  
**Numerals:** Baton  
**Crown:** Signed, Fluted  
**Movement:** Tissot 17-Jewel Manual-wind Movement, numbered '14792501'  
**Strap:** Integral 9ct Gold mesh strap, marked 'OWC'  
**Inner Circumference:** Approximately 17cm  
**Buckle:** Signed, 9ct Gold, Fold-Over Clasp  
**Box:** No, with unrelated Omega Box  
**Papers:** No  
**Gross Weight:** 22.7 grams **£400-600**



- 261 **Seiko**  
**Astron GPS Solar Chronograph, Novak Djokovic Limited**  
**Edition No.** 860/2500  
**Reference:** 8X82-0AF0  
**Serial:** 0860/2500  
**Bezel:** Ceramic, Tachymeter  
**Year:** circa 2016  
**Case Material:** Rose Gold-Plated Stainless Steel  
**Case Diameter:** Approximately 46mm  
**Dial:** Grey  
**Numerals:** Baton, Minute Track to Rehaut  
**Crown:** Fluted, Four Chronograph Pushers  
**Movement:** Seiko Calibre 8X82A 12-Jewel Quartz Movement, numbered 'J7A45H' and 'O44E2J'  
**Complications:** Date aperture at four o'clock, Hour subsidiary dial at two o'clock, Dual-time, DST and Power Indicator subsidiary dial at six o'clock, Seconds subsidiary dial with GPS Signal Reception Indicator at ten o'clock  
**Strap:** PVD Coated Stainless Steel, Ceramic  
**Inner Circumference:** Approximately 18cm  
**Buckle:** Signed, PVD Coated Stainless Steel, Push-Deployment Clasp  
**Box:** No  
**Papers:** No  
**Gross Weight:** 159.9 grams **£300-500**





Fine Jewellery, Watches & Silver, 22nd May, 2025 09:30

262

**Breitling**  
**Callisto**  
**Reference:** 80520  
**Serial:** 4474567 (to movement)  
**Bezel:** Uni-directional  
**Year:** circa 1990  
**Case Material:** Stainless Steel  
**Case Diameter:** Approximately 35mm  
**Dial:** Grey, Silvered, Blue Subsidiary Dials, Luminous Stick Hands  
**Numerals:** Baton, Minute Track  
**Crown:** Fluted  
**Movement:** Breitling Lemania Calibre 1873 17-Jewel Manual-Wind Movement, numbered '4474567'  
**Complication:** 30-Minute subsidiary dial at three o'clock, 12-Hour subsidiary dial at six o'clock, Seconds subsidiary dial at nine o'clock  
**Strap:** Signed, Black Rubber, marked '18-17'  
**Inner Circumference:** Approximately 23cm at widest  
**Buckle:** Signed, Stainless Steel Buckle  
**Box:** No  
**Papers:** No  
**Gross Weight:** 73.1 grams **£500-700**



263

**Bulgari**  
**Bulgari Bulgari Lady's Wristwatch**  
**Reference:** BBL P 37 SG  
**Serial:** PO 4205  
**Bezel:** Smooth, Engraved 'BULGARI'  
**Year:** circa 2010  
**Case Material:** Stainless Steel & '18K'  
**Case Diameter:** Approximately 37mm  
**Dial:** Brown, Silvered  
**Numerals:** Diamond  
**Crown:** Pink Cabochon  
**Movement:** Bulgari 25-Jewel Automatic Movement, marked 'S.1.', 'M12' and 'A 10.-2'  
**Strap:** Bi-metal H-link Strap, marked 'PRMAG'  
**Inner Circumference:** Approximately 16.5cm  
**Buckle:** Signed, Push-Button Deployment Clasp  
**Box:** No  
**Papers:** No  
**Gross Weight:** 111.7 grams **£400-600**

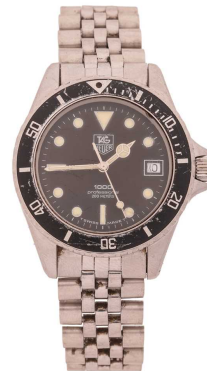


Fine Jewellery, Watches & Silver, 22nd May, 2025 09:30

- 264 **Omega**  
**18ct Gold Seamaster Automatic**  
**Reference:** 166.003  
**Serial:** 23913782  
**Bezel:** Smooth  
**Year:** circa 1960  
**Case Material:** 18ct Yellow Gold  
**Case Diameter:** Approximately 34mm  
**Dial:** Silvered, Brushed, Dauphine Hands  
**Numerals:** Baton, Minute Track  
**Crown:** Signed, Fluted  
**Movement:** Omega Calibre 562 24-Jewel Automatic  
Movement, numbered 23913782  
**Complication:** Date aperture at three o'clock  
**Strap:** Signed, Brown Leather  
**Inner Circumference:** Approximately 21.5cm at widest  
**Buckle:** Gold-Plated Buckle  
**Box:** Travel Case  
**Papers:** No  
**Gross Weight:** 40.5 grams **£600-800**



- 265 **TAG Heuer**  
**Professional 1000**  
**Reference:** 980.013N  
**Serial:** 2731024  
**Bezel:** Uni-directional (deficient)  
**Year:** circa 1985  
**Case Material:** Stainless Steel  
**Case Diameter:** Approximately 36mm  
**Dial:** Black  
**Numerals:** Luminous, Dot, Baton at six and nine o'clock,  
Triangle at twelve o'clock  
**Crown:** Signed, Fluted, Screw-down  
**Movement:** ETA Calibre 955 112 Seven-Jewel Quartz  
Movement, marked 'AL1#'  
**Complication:** Date aperture at three o'clock  
**Strap:** Stainless Steel  
**Inner Circumference:** Approximately 20cm  
**Buckle:** Signed, Stainless Steel, Fold-Over Clasp  
**Box:** No  
**Papers:** No  
**Gross Weight:** 83.5 grams **£300-500**



Fine Jewellery, Watches & Silver, 22nd May, 2025 09:30

266

**Panerai**  
**Luminor Base**  
**Reference:** OP 6556  
**Serial:** BB 1055144, E0203/2000  
**Bezel:** Smooth  
**Year:** circa 2004  
**Case Material:** Stainless Steel  
**Case Diameter:** 44mm  
**Dial:** Black, Luminous Stick Hands  
**Numerals:** Luminous, Baton, Arabic at twelve and six o'clock, Minute Track  
**Crown:** Fluted, Covered  
**Movement:** Panerai Calibre 7750-P3 21-Jewel Automatic Movement, numbered 231282  
**Complications:** Power Reserve at five o'clock, Seconds subsidiary dial at nine o'clock  
**Strap:** Signed, Black Rubber  
**Inner Circumference:** Approximately 23cm at widest  
**Buckle:** Stainless Steel Buckle  
**Box:** No  
**Papers:** No  
**Gross Weight:** 154.8 grams **£1,500-2,000**



267

**Bulova**  
**Royal Oak**  
**Reference:** 7-020249  
**Serial:** E-612  
**Bezel:** Smooth, Octagonal, Gilt  
**Year:** circa 1970  
**Case Material:** Stainless Steel, Gilt Stainless Steel  
**Case Diameter:** 29mm x 30mm  
**Dial:** Silvered, Matte Central Section, Stick Hands  
**Numerals:** Baton, Roman at twelve o'clock  
**Crown:** Fluted  
**Movement:** Bulova Seven-Jewel Quartz Movement, marked 0171  
**Complication:** Date aperture at three o'clock  
**Strap:** Stainless Steel, H-Link Strap  
**Inner Circumference:** Approximately 18cm  
**Buckle:** Signed, Stainless Steel, Fold-Over Clasp  
**Box:** No  
**Papers:** No  
**Gross Weight:** 54.1 grams **£400-600**



Fine Jewellery, Watches & Silver, 22nd May, 2025 09:30

- 268 **TAG Heuer**  
**Gentleman's Carrera Calibre 16 Chronograph**  
**Reference:** CV2A84  
**Serial:** WKH6489  
**Bezel:** Tachymetre  
**Year:** circa 2017  
**Case Material:** PVD Titanium  
**Case Diameter:** Approximately 44mm  
**Dial:** Black, Luminous Sword Hands  
**Numerals:** Arabic Minute Numerals  
**Crown:** Signed, Fluted, Two Chronograph Pushers  
**Movement:** TAG Heuer Calibre 16  
**Complications:** Day and Date aperture at three o'clock, 30-Minute subsidiary dial at twelve o'clock, 12-Hour subsidiary dial at six o'clock, Seconds subsidiary dial at nine o'clock  
**Strap:** Brown leather, Signed  
**Inner Circumference:** Approximately 20cm  
**Buckle:** Signed, PVD Titanium, Push Deployment Fold-Over Clasp  
**Box:** No  
**Papers:** No  
**Gross Weight:** 111.1 grams **£600-800**



- 269 A Vertex diamond-set cocktail watch, the circular white dial with baton numerals encircled by a diamond-set bezel featuring twenty grain-set single-cut diamonds, the case sides engraved with scroll detail and marked '.375', with a signed fluted bezel for Ernest Borel, the watch featuring an Ernest Borel calibre 4035 seventeen jewel manual-wind movement, with an integral 9ct white gold mesh strap with abstract brushed texture, completed with a 9ct white gold fold-over clasp, stamped 'V.W.Ltd', inner circumference approximately 17cm at widest, the case and clasp featuring British hallmarks for 9ct white gold dated 1968, boxed, 19.1 grams. **£200-300**



- 270 **Blancpain**  
**18ct Villeret Wrist Watch**  
**Reference:** 178  
**Bezel:** Stepped, Smooth, 18ct Gold  
**Year:** circa 1980  
**Case Material:** 18ct Gold, Swiss Helvetia Stamp, Geneva, Skeleton Back  
**Case Diameter:** Approximately 27mm  
**Dial:** White Enamel, Leaf Hands  
**Numerals:** Roman  
**Crown:** Signed, Fluted  
**Movement:** Blancpain Calibre 95 19-Jewel Automatic Movement  
**Complication:** Date subsidiary dial at six o'clock  
**Strap:** Black Leather, After-Market  
**Inner Circumference:** Approximately 20cm at widest  
**Buckle:** Gold-Plated, After-Market  
**Box:** No  
**Papers:** No  
**Gross Weight:** 36.1 grams **£500-700**





Fine Jewellery, Watches & Silver, 22nd May, 2025 09:30

- 271 TAG Heuer  
Gentleman's Aquaracer  
Reference: WBD1312  
Serial: WMR2245  
Bezel: Uni-directional  
Year: circa 2000s  
Case Material: Stainless Steel  
Case Diameter: 33mm  
Dial: Blue  
Numerals: Baton  
Crown: Signed, Fluted  
Movement: Ronda, Five-Jewel Quartz Movement  
Complication: Date aperture at three o'clock  
Strap: Stainless Steel, numbered '3243', with diver extension  
Inner Circumference: Approximately 14cm  
Buckle: Signed, Stainless Steel, Fold-Over Clasp  
Box: No  
Papers: No  
Gross Weight: 83.2 grams £400-600



- 272 TAG Heuer  
Formula 1 Chronograph  
Reference: CA 1212-R0  
Serial: G07424  
Bezel: Uni-directional, Black  
Year: circa 1995  
Case Material: Stainless Steel  
Case Diameter: Approximately 36mm  
Dial: White, Mercedes Hands  
Numerals: Yellow Dot, Yellow Triangle at twelve o'clock, Yellow Baton at three and nine o'clock  
Crown: Signed, Fluted, Screw-down, Two chronograph pushers either side  
Movement: TAG Heuer 1.95 ETA Calibre 251 262 27-Jewel Quartz Movement  
Complications: Date aperture at four o'clock, 1/10 Seconds subsidiary dial at two o'clock, Seconds subsidiary dial at six o'clock, 12-Hour subsidiary dial at ten o'clock  
Strap: Stainless Steel  
Inner Circumference: Approximately 16cm  
Buckle: Signed, Stainless Steel, Fold-Over Clasp  
Box: No  
Papers: No  
Gross Weight: 97.9 grams £400-600



## Fine Jewellery, Watches & Silver, 22nd May, 2025 09:30

273

**Jaeger LeCoultre**  
**Gold-plated Wrist Watch**  
**Reference:** 679305  
**Serial:** 1195070  
**Bezel:** Smooth  
**Year:** circa 1960  
**Case Material:** Gold-plated Stainless Steel  
**Case Diameter:** Approximately 33mm  
**Dial:** Cream, Dauphine Hands  
**Numerals:** Baton  
**Crown:** Fluted  
**Movement:** Jaeger LeCoultre Calibre K800/CW 17-Jewel  
 Manual-Wind Movement, numbered 1195070  
**Strap:** Black Leather, After-Market  
**Inner Circumference:** 20.5cm at widest  
**Buckle:** Gold-Plated Buckle  
**Box:** No  
**Papers:** No  
**Gross Weight:** 30.8 grams **£200-300**



274

**Omega**  
**Seamaster De Ville**  
**Reference:** 166.020  
**Bezel:** Smooth, Gold-Plated  
**Year:** circa 1970  
**Case Material:** Gold-Plated Stainless Steel  
**Case Diameter:** Approximately 34mm  
**Dial:** Silvered, Brushed, Index Hands  
**Numerals:** Baton, Minute Track  
**Crown:** Signed, Fluted  
**Movement:** Automatic  
**Complication:** Date Aperture at three o'clock  
**Strap:** Brown, Lizard, After-Market  
**Inner Circumference:** Approximately 24cm at widest  
**Buckle:** Gold-Plated Buckle  
**Box:** No  
**Papers:** No  
**Gross Weight:** 37.3 grams **£300-500**



## Fine Jewellery, Watches & Silver, 22nd May, 2025 09:30

275

**Tudor**

**Clair de Rose Lady's Wrist Watch**

**Reference:** 35701

**Serial:** J563474

**Bezel:** Smooth

**Year:** circa 2010

**Case Material:** Stainless Steel

**Case Diameter:** Approximately 33mm

**Dial:** Mother of Pearl

**Numerals:** Diamond

**Crown:** Fluted, Screw-Down

**Movement:** ETA Calibre 2824-2 25-Jewel Automatic

Movement, marked 'VSZRG'

**Complication:** Date aperture at three o'clock

**Strap:** Stainless Steel

**Inner Circumference:** Approximately 18cm

**Buckle:** Signed, Stainless Steel, Fold-Over Clasp

**Box:** No

**Papers:** No

**Gross Weight:** 97.1 grams **£300-500**



276

**Omega**

**Constellation Chronometer**

**Reference:** 1422

**Serial:** 46791878 (to movement)

**Bezel:** Crystal-Covered

**Year:** late 1980s

**Case Material:** Stainless Steel

**Case Diameter:** Approximately 32mm

**Dial:** Brown, Luminous Stick Hands

**Numerals:** Roman

**Crown:** Signed, Fluted

**Movement:** Omega Calibre 1422 7-Jewel Quartz Movement,

numbered '46791878'

**Complication:** Date Aperture at three o'clock

**Strap:** Stainless Steel and Gold-Plated Stainless Steel

**Inner Circumference:** Approximately 20cm

**Buckle:** Stainless Steel, Push-Button Deployment Clasp

**Box:** No

**Papers:** No

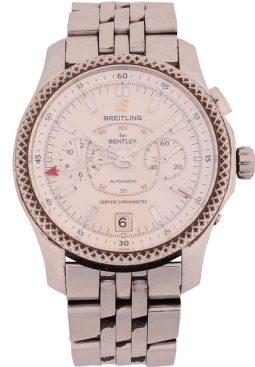
**Gross Weight:** 76.7 grams **£300-500**



Fine Jewellery, Watches & Silver, 22nd May, 2025 09:30

277

**Breitling**  
**Bentley Mark VI**  
**Reference:** P26362  
**Serial:** 2120667  
**Bezel:** Crosshatch Textured  
**Year:** circa 2000  
**Case Material:** Stainless Steel  
**Case Diameter:** 42mm  
**Dial:** Cream, Luminous sword hands, Signed seconds hand  
**Numerals:** Baton, minute track  
**Crown:** Signed, Fluted, Screw-locked  
**Movement:** ETA 2892A2 Automatic Movement, numbered 2120667  
**Functions:** Date aperture at six o'clock, Seconds sub-dial at three o'clock, 12-Hour sub-dial at nine o'clock, 1/100-Second sub-dial to centre  
**Strap:** Stainless Steel, numbered 973A and S4505  
**Inner Circumference:** Approximately 18cm  
**Buckle:** Signed, Stainless Steel, Fold-over clasp  
**Box:** No  
**Papers:** No  
**Gross Weight:** 175.4 grams **£800-1,200**



278

**Omega**  
**9ct Gold Wrist Watch**  
**Reference:** 1061  
**Serial:** 3325411  
**Bezel:** Smooth, 9ct Yellow Gold  
**Year:** circa 1975  
**Case Material:** 9ct Yellow Gold  
**Case Diameter:** Approximately 33mm  
**Dial:** Cream Enamel, Stick Hands  
**Numerals:** Baton, Minute Track  
**Crown:** Signed, Fluted  
**Movement:** Omega Calibre 1030 17-Jewel Manual-Wind Movement, numbered 39096388  
**Complication:** Date aperture at three o'clock  
**Strap:** Integral 9ct Gold Mesh Strap  
**Inner Circumference:** Approximately 20cm at widest  
**Buckle:** Signed, 9ct Gold Fold-Over Clasp  
**Box:** No  
**Papers:** No  
**Gross Weight:** 55.3 grams **£500-700**





Fine Jewellery, Watches & Silver, 22nd May, 2025 09:30

- 279 **Omega**  
**Seamaster 600**  
**Reference:** 136.011  
**Serial:** 25101137  
**Bezel:** Smooth  
**Year:** circa 1965  
**Case Material:** Gold-Plated Stainless Steel  
**Case Diameter:** Approximately 34mm  
**Dial:** Silvered, Brushed, Sword Hands  
**Numerals:** Baton  
**Crown:** Signed, Fluted  
**Movement:** Omega Calibre 513 17-Jewel Manual-wind  
Movement, numbered 25101137  
**Complication:** Date aperture at three o'clock  
**Strap:** Black Leather, After-Market  
**Inner Circumference:** Approximately 21cm at widest  
**Buckle:** Stainless Steel  
**Box:** No  
**Papers:** No  
**Gross Weight:** 39.3 grams **£300-500**



- 280 **TAG Heuer**  
**Professional 2000**  
**Reference:** 962.006-2  
**Serial:** B39642  
**Bezel:** Uni-directional  
**Year:** circa 2000  
**Case Material:** Stainless Steel  
**Case Diameter:** Approximately 39mm  
**Dial:** Grey, Luminous Mercedes Hands  
**Numerals:** Luminous Baton, Square at twelve o'clock, Dot at six and nine o'clock  
**Crown:** Signed, Fluted, Screw-Down  
**Movement:** TAG Heuer 2.90 ETA Calibre 955.114 7-Jewel  
Quartz Movement  
**Complication:** Date Aperture at three o'clock  
**Strap:** Stainless Steel, marked '300/31'  
**Inner Circumference:** Approximately 17cm  
**Buckle:** Signed, Stainless Steel, Fold-Over Clasp  
**Box:** No  
**Papers:** No  
**Gross Weight:** 94.3 grams **£200-300**



Fine Jewellery, Watches & Silver, 22nd May, 2025 09:30

- 281 **Omega**  
**A 9ct Lady's Wrist Watch**  
**Reference:** 7301  
**Serial:** 591.0019  
**Bezel:** Smooth  
**Year:** circa 1975  
**Case Material:** 9ct Yellow Gold  
**Case Diameter:** Approximately 19mm  
**Dial:** Gold-Tone, Cross-Hatched Texture  
**Numerals:** Baton  
**Crown:** Push-in  
**Movement:** Omega Calibre 1350 Two-Jewel Quartz Movement, numbered '41085309'  
**Strap:** Integral, 9ct Gold Mesh Strap  
**Inner Circumference:** Approximately 17cm at widest  
**Buckle:** Signed, 9ct Gold, Fold-Over Clasp  
**Box:** Yes  
**Papers:** No  
**Gross Weight:** 26.9 grams **£400-600**
- 
- 282 **Omega**  
**An '18K' De Ville Wrist Watch**  
**Reference:** 591.0028  
**Bezel:** Smooth  
**Year:** circa late 1970s  
**Case Material:** '18K' Yellow Gold, with Swiss Helvetia Head Stamp  
**Case Diameter:** Approximately 24mm  
**Dial:** Gold-tone  
**Numerals:** Baton  
**Crown:** Push-in  
**Movement:** Omega Two-Jewel Quartz Movement, numbered 37863202  
**Strap:** Brown Leather, After-Market  
**Inner Circumference:** Approximately 19cm at widest  
**Buckle:** Signed, Gold-Plated Buckle  
**Box:** No  
**Papers:** No  
**Gross Weight:** 20.7 grams **£400-600**
- 
- 283 **Omega**  
**Gentleman's Wristwatch**  
**Model:** 135.041  
**Serial:** 28118181  
**Year:** 1960s  
**Case Material:** Stainless Steel  
**Case Diameter:** Approximately 33mm  
**Dial:** Silvered  
**Numerals:** Baton  
**Movement:** Calibre 601 Mechanical  
**Strap:** Leather  
**Buckle:** Clasp  
**Box:** No  
**Papers:** No  
**Private Collection** **£200-300**
- 

## Fine Jewellery, Watches & Silver, 22nd May, 2025 09:30

- 284 **Omega**  
**Lady's Constellation**  
**Reference:** 795.1203  
**Serial:** 56352694  
**Bezel:** Smooth, Black Enamelled Roman Numerals  
**Year:** circa 1999  
**Case Material:** Stainless Steel  
**Case Diameter:** Approximately 21mm  
**Dial:** White, Crosshatch Detail, Luminous Dauphine Hands  
**Numerals:** Black Roman to Bezel, Baton to Dial  
**Crown:** Signed, Fluted  
**Movement:** Omega Calibre 1456 6-Jewel Quartz Movement  
**Strap:** Bi-Metal  
**Inner Circumference:** Approximately 17cm  
**Buckle:** Signed, Stainless Steel, Push-Button Deployment Clasp  
**Box:** No  
**Papers:** International Warranty Card and Operating Manual in Red Pouch Only.  
**Gross Weight:** 49.4 grams **£400-600**



- 285 **Mappin & Webb**  
**A 9ct Gold Wrist Watch**  
**Bezel:** Smooth  
**Year:** circa 1970  
**Case Material:** 9ct Gold  
**Case Diameter:** Approximately 23mm  
**Dial:** White Enamel  
**Numerals:** Roman Numerals  
**Crown:** Unsigned, Fluted  
**Movement:** Automatic  
**Strap:** After-market leather strap  
**Inner Circumference:** Approximately 21cm at widest  
**Buckle:** Base Metal Buckle  
**Box:** No  
**Papers:** No  
**Gross Weight:** 23.4 grams **£200-300**



- 286 A lady's diamond-set cocktail watch, with a sixteen-jewel manual-wind movement, the rectangular white face featuring Arabic numerals in a diamond-set case, measuring approximately 24mm x 12mm, with baguette-cut and round brilliant diamonds, in white metal marked 'plat', to a diamond-set bracelet strap, with a push bar clasp and safety catch, measuring 16.7cm; 21.5 grams. **£800-1,200**



Fine Jewellery, Watches & Silver, 22nd May, 2025 09:30

- 287 **Corum**  
**5 gram Ingot Wrist Watch**  
**Reference:** 46300  
**Serial:** 358063  
**Bezel:** Smooth  
**Year:** circa 2000  
**Case Material:** '18K'  
**Case Diameter:** Approximately 16mm x 22mm  
**Dial:** Five Gram Gold Ingot  
**Numerals:** None  
**Crown:** Faceted Gem-Set  
**Movement:** Corum ETA Calibre 978.001 Six-Jewel Quartz  
Movement numbered '210934'  
**Strap:** Black Leather  
**Inner Circumference:** Approximately 19cm at widest  
**Buckle:** Signed, Gold-Plated Buckle  
**Box:** No  
**Papers:** No  
**Gross Weight:** 25.0 grams **£1,500-2,500**



- 288 **Juvenia**  
**An '18K' Wristwatch**  
**Reference:** 755195  
**Bezel:** Brushed, Textured  
**Year:** circa 1980  
**Case Material:** '18K' Yellow gold  
**Case Diameter:** Approximately 25mm  
**Dial:** Brushed, Textured  
**Numerals:** Baton  
**Crown:** Fluted, Gold-Plated  
**Movement:** Juvenia Calibre 635 17-Jewel Manual-Wind  
Movement  
**Strap:** Integral, Brushed, Textured Strap marked '750'  
**Inner Circumference:** Approximately 17.5cm at widest  
**Buckle:** Signed, Signed '750', Fold-Over Clasp  
**Box:** No  
**Papers:** No  
**Gross Weight:** 45.4 grams **£1,500-2,000**





Fine Jewellery, Watches & Silver, 22nd May, 2025 09:30

- 289 **Rolex**  
**Datejust**  
**Reference:** 69173  
**Serial:** L790175  
**Bezel:** Fluted  
**Year:** July 1987  
**Case Material:** Bi-metal  
**Case Diameter:** 28mm  
**Dial:** Gilt  
**Numerals:** Diamond-set, Rolex crown at twelve o'clock  
**Crown:** Signed, Fluted  
**Movement:** Rolex Calibre 2135 29-Jewel Automatic Movement, numbered 2034795  
**Complication:** Date aperture with cyclops magnifier at three o'clock  
**Strap:** Bi-metal jubilee strap, marked '468B'  
**Inner Circumference:** Approximately 15cm  
**Buckle:** Signed, Fold-over clasp, Stainless Steel  
**Box:** Yes  
**Papers:** No, Accompanied by Rolex Leaflet  
**Gross Weight:** 54.2 grams **£2,000-3,000**



- 290 \*Withdrawn\*



- 291 **Rolex**  
**Oyster Perpetual 34**  
**Reference:** 1007  
**Serial:** 1997107  
**Bezel:** Engine-Turned  
**Year:** 1969  
**Case Material:** Stainless Steel  
**Case Diameter:** 34mm  
**Dial:** Cream, Silvered, Stick Hands  
**Numerals:** Baton, Rolex crown at twelve o'clock  
**Crown:** Signed, Fluted, Screw-Down  
**Movement:** Rolex Calibre 1570 26-Jewel Automatic Movement, numbered 'D27844'  
**Strap:** Stainless Steel Jubilee Strap, marked '574 B'  
**Inner Circumference:** Approximately 17cm  
**Buckle:** Signed, Stainless Steel, Fold-Over Clasp, marked 'EO1' and '62510H'  
**Box:** Yes, Unassociated 'The Vintage Watch Company' Box  
**Papers:** No  
**Gross Weight:** 76.3 grams **£1,500-2,000**



Fine Jewellery, Watches & Silver, 22nd May, 2025 09:30

- 292 **Rolex**  
**1959 Oyster Wrist Watch**  
**Reference:** 6425  
**Serial:** 453752  
**Bezel:** Smooth  
**Year:** 1959  
**Case Material:** Stainless Steel  
**Case Diameter:** 34mm  
**Dial:** Cream, Quartered Chevron, Dauphine Hands, Blue Stick Seconds Hand  
**Numerals:** Triangular Baton, Arabic at three, six and nine o'clock, Rolex crown at twelve o'clock, Minute Track  
**Crown:** Signed, Fluted, Screw-Down  
**Movement:** Rolex Calibre 1210 17-Jewel Manual-Wind Movement, numbered 'N57468'  
**Strap:** Black Leather, After-Market  
**Inner Circumference:** Approximately 20.5cm at widest  
**Buckle:** Chrome-Plated Buckle, After-Market  
**Box:** Yes, Unassociated 'The Vintage Watch Company' Box  
**Papers:** No  
**Gross Weight:** 39.4 grams **£2,000-3,000**



- 293 **Cartier - A Rare 18ct Gold Octagonal Wristwatch**  
**Reference:** 1945  
**Bezel:** Octagonal, Smooth  
**Year:** 1976 (Hallmarked in London)  
**Case Material:** 18ct Yellow Gold  
**Case Diameter:** 24mm  
**Dial:** Cream Enamel, Blue Sword Hands  
**Numerals:** Black Roman Numerals  
**Crown:** Blue Cabochon  
**Movement:** Jaeger LeCoultre Calibre 845 17-Jewel Manual-Wind Movement, numbered 2079799  
**Strap:** Black Leather  
**Inner Circumference:** Approximately 15cm  
**Buckle:** 18ct Gold Fold-Over Clasp, marked 'J.C.'  
**Box:** No  
**Papers:** No  
**Gross Weight:** 32.7 grams  
*Private Collection, purchased from new. £20,000-30,000*



Fine Jewellery, Watches & Silver, 22nd May, 2025 09:30

- 294 **Chopard**  
**An '18K' Wristwatch**  
**Reference:** 4014.1  
**Serial:** 55763  
**Bezel:** Twisted  
**Year:** circa 1980  
**Case Material:** '18K' Yellow gold, with Swiss Helvetia Head stamped in Geneva  
**Case Diameter:** Approximately 32mm  
**Dial:** Gold-tone, Stippled Texture, Dauphine Hands  
**Numerals:** None  
**Crown:** Signed, Fluted  
**Movement:** Chopard 17-Jewel Manual-Wind Movement  
**Strap:** Integral Mesh-Link Strap, surface testing as 18ct  
**Inner Circumference:** Approximately 17cm at widest  
**Buckle:** Signed, Fold-over Clasp marked '750'  
**Box:** No  
**Papers:** No  
**Gross Weight:** 70.6 grams **£2,000-3,000**



- 295 **Omega**  
**Seamaster Professional Co-Axial Chronometer 300m**  
**Reference:** 168.1506  
**Serial:** 81714471  
**Bezel:** Uni-directional, Blue  
**Year:** circa 2000  
**Case Material:** Stainless Steel  
**Case Diameter:** Approximately 38mm  
**Dial:** Blue, Wave, Luminous Skeleton Hands  
**Numerals:** Luminous Dot, Luminous Baton at twelve, six and nine o'clock  
**Crown:** Signed, Fluted, Screw-Down, with Helium Escape Valve  
**Movement:** Omega Calibre 2500C 27-Jewel Automatic Movement, adjusted to five positions and temperature, numbered 81714471  
**Complication:** Date aperture at three o'clock  
**Strap:** Stainless Steel, Five-Link Strap  
**Inner Circumference:** Approximately 18cm  
**Buckle:** Signed, Stainless Steel, Fold-Over Clasp  
**Box:** No  
**Papers:** No  
**Gross Weight:** 140.0 grams **£1,000-1,500**



## Fine Jewellery, Watches & Silver, 22nd May, 2025 09:30

- 296 **Rolex**  
**Datejust Turn-O-Graph Chronometer**  
**Reference:** 16263  
**Bezel:** Bi-directional, 18ct  
**Year:** 2000  
**Case Material:** Stainless Steel  
**Case Diameter:** Approximately 36mm  
**Dial:** White, Stick Hands  
**Numerals:** Baton, Rolex crown at twelve o'clock, Minute Track  
**Crown:** Signed, Fluted, Screw-down  
**Movement:** Rolex Calibre 3135 31-Jewel Automatic  
 Movement, numbered 6983108  
**Complication:** Date aperture with cyclops magnifier at three o'clock  
**Strap:** Bi-Metal Oyster Strap, numbered '458 B'  
**Inner Circumference:** Approximately 20cm  
**Buckle:** Signed, Stainless Steel, Fold-Over Clasp  
**Box:** No  
**Papers:** No  
**Gross Weight:** 114.1 grams **£2,500-3,500**



- 297 An '18K' full-hunter chronograph repeater pocket watch, featuring a keyless wound movement, the plain 52mm case opening to reveal a glazed white enamel dial, with black Roman numerals and a minute track, blue poire hands, with centre seconds and a second subsidiary dial at six o'clock, chronograph pusher to case side at twelve o'clock, inner of case marked '8177' and '18K', gross weight 124.4 grams. **£1,500-2,000**



- 298 A 'K14' full-hunter pocket watch, featuring a keyless wound fifteen jewel movement, the 45mm outer case engraved with engine turned and foliate design, the hinged cover featuring a central vacant shield cartouche, opening to reveal a glazed white enamel dial with black Roman numerals and minute track, blue Fleur de Lys hands, seconds subsidiary dial at six o'clock, inner of case marked 'K14' and '22', the inner of the case back featuring a personal engraving and is marked '26022', base metal dust cover engraved 'No. 26022', gross weight 71.9 grams. **£600-800**



- 299 A '14K' full-hunter pocket watch by Louis Grisel, featuring a glazed keyless wound fifteen jewel lever movement, the 55mm outer case engraved with engine turned design, with the hinged cover featuring a central vacant shield cartouche, opening to reveal a glazed white enamel dial with black Roman numerals and minute track, blue Fleur de Lys hands, seconds subsidiary dial at six o'clock, inner of case marked '283' and '14K', dust cover engraved in French and signed 'Louis Grisel' & 'No 131283' and featuring the Swiss squirrel 14ct mark, gross weight 109.8 grams. **£800-1,200**





## Fine Jewellery, Watches & Silver, 22nd May, 2025 09:30

- 300 An '18K' open-face pocket watch, by Vulcain, featuring a keyless wound sixteen-jewel movement, signed Vulcain, the 46mm case featuring a glazed silvered dial with gold-tone Arabic numerals, dot minute track to the edge of the dial, with a seconds subsidiary dial at six o'clock, inner of case back marked with Swiss Helvetia Head, numbered '1806309' and marked '18C'. **£1,500-2,000**



- 301 A 'K18' open-face pocket watch, featuring a key-wound movement, the 38mm outer case engraved with engine-turned and foliate design, with a central monogrammed shield cartouche, the glazed white enamel dial featuring black Roman numerals and minute track, inner of case marked 'K18' and '132871', base metal dust cover, boxed, accompanied by two associated keys and a gold-plated watch chain with T-bar and completed with a lobster clasp, also accompanied by a gold-plated lapel pin and chain; Weight of pocket watch 40.6 grams. **£200-300**



- 302 A '14C' full-hunter enamelled pocket watch, featuring a keyless wound movement, the 32mm outer case engraved with foliate design and featuring enamelled details, the hinged cover featuring a central vacant shield cartouche, opening to reveal a white enamel dial with black Roman numerals, with gilt foliate design to the centre and edges of the dial as well as a gilt dot minute track, poire hands, inner of hinged cover marked '14C' and '540 9', inner of case back marked '92540 9', base metal dust cover, gross weight 24.5 grams. **£250-350**



- 303 A 9ct gold propelling pencil by Sampson Mordan & co., with a ball finial and grooved barrel, cased in a conforming sleeve with engine-turned patterns and a swivel surmount to suspension loop, 6.0cm in length (without loop), 7.8cm when extended, London 1920, 13.8 grams. **£250-350**



- 304 A vesta case in 9ct gold, of rectangular form, fully decorated with engine turned design, with key design to the edges, hinged cover and suspension loop, London 1928, by Charles Packer & Co Ltd, 5.4cm x 4.8cm (without suspension loop) x 1.0cm. **£600-800**



## Fine Jewellery, Watches & Silver, 22nd May, 2025 09:30

- 305 A vesta case in 9ct gold, of square form, fully decorated with striped engine-turned design, the front featuring a vacant rectangular cartouche set at a forty-five degree angle, hinged cover and suspension loop, Birmingham 1911, by Deakin & Francis, 4.5cm x 4.5cm x 1.0cm (without suspension loop). **£500-700**



- 306 A cigarette case in 9ct gold, of curved rectangular form, the cover and base featuring engine turned decoration with scrolled engraving to the edges, with a sapphire cabochon push-in thumbpiece, the inside of the hinged cover featuring London import marks, dated 1920, measuring 12.7cm x 8.3cm. **£2,000-3,000**



- 307 An early 19th Century Continental (possibly French) gilt snuff box, of waisted rectangular form, the hinged cover with floral and scroll border and central cartouche, with inset thumbpiece, the base with embossed floral detail, measuring approximately 8.3cm x 4.9cm x 1.4mm, with rubbed marks; 77.2 grams. **£400-600**



- 308 A set of twelve cast white metal apostle spoons, 218 grams (7.7 oz) (possibly formally gilded). **£200-300**



- 309 A four-piece silver tea set of baluster form, the hinged covers to the teapot and hotwater jug with turned fruitwood knobs and replacement composite handles, together with a two handled sugar bowl and a milk jug, London 1920, 1644 grams (58 oz) gross, together with a pair of Victorian silver sugar tongs (5). **£400-600**



## Fine Jewellery, Watches & Silver, 22nd May, 2025 09:30

- 310 A Victorian silver salver by Elkington & Co., Birmingham 1897, of circular form with scrolled acanthus rim, on three conforming bracket feet, hallmarks to the base, 25.5 cm wide, 622.5 grams (20.01 ozt). **£250-350**



- 311 A fiddle pattern part canteen, comprising: twelve table forks, six London 1825 by William Bennett, six London 1826 by William M Traies; London 1825, four dessert forks, six tablespoons London 1825 by William Bennett, six dessert spoons London 1825 by William Bennett and a pair of sauce ladles, London 1827 by the Lias Brothers. All with crests engraved to terminals; 1727g (55.5ozt). **£500-700**



- 312 A fiddle and thread pattern canteen for ten people, comprising ten dessert spoons, ten soup spoons, ten teaspoons, ten coffee spoons; ten table forks, ten dessert forks, ten pairs of fish eaters, Ten table knives with stainless steel blades and ten dessert knives with stainless steel blades. Sheffield 2001 by William Hutton and Sons. In fitted case for twelve settings, with removable tray. Gross weight weighable 5089g (163.6ozt) **£1,500-2,500**



- 313 A circular Mappin and Webb silver fruit bowl with a scroll and shell border on a stepped circular foot. 24cm diam; together with a pair of white metal candlesticks, circular with tapering circular stems, and integral baluster-shaped nozzles. Stamped '925'. 22cm, 303grams. **£200-300**



- 314 A large quantity of mixed teaspoons; including a set of six fiddle and shell pattern spoons, London 1821 by Robert Rutland, a further set of six teaspoons and a quantity of other teaspoons, together with a small quantity of silver-plated flatware. All are contained within a Queen Anne/George walnut tea caddy box with brass fittings. Gross weight weighable 726 grams (23 ozt). **£400-600**





## Fine Jewellery, Watches & Silver, 22nd May, 2025 09:30

- 315 A set of twelve Hanoverian feather edge pattern table forks, with crests and mottos engraved to terminals; together with three Old English feather edge table spoons en suite. London 1793 by George Smiley and William Fearn. Gross weight 1050 grams (32ozt) **£400-600**



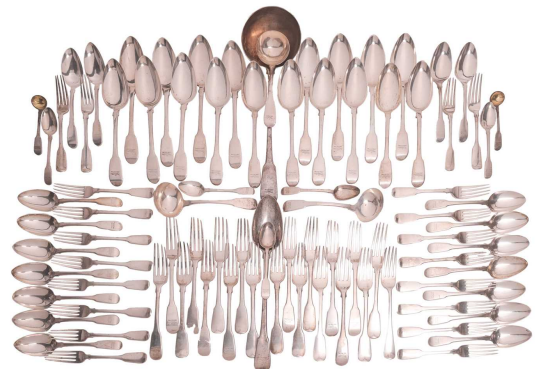
- 316 A large silver centre epergne, with central pierced flared vase above a pierced lobed dish flanked by two heart-shaped dishes, on a pierced oval base on four acanthus leaf scroll feet, London 1902, 3458 grams (122ozt) 56cm high. **£1,500-2,000**



- 317 A Victorian silver castle top presentation snuff box, depicting the Lindisfarne Castle, by B&S, Birmingham 1846, of waisted rectangular form, hinged cover with cast and engraved castle scene within a mould scrolled border, conforming thumbpiece open to reveal gilt interior, engine-turned patterns throughout, base with cartouche engraved with inscription, 7.8 x 5.1 cm, 116.9 grams. **£250-350**



- 318 A harlequin canteen of fiddle pattern flatware, with grasshopper crests to terminals, comprising eighteen table spoons, nine London 1810 by Eley, Fearn and Chawner, nine London 1847 by Elizabeth Eaton; eighteen dessert spoons, ten London 1810 by Eley, Fearn and Chawner, eight London 1828 by William Traies; nineteen table forks mixed dates and makers; twenty dessert forks mixed dates and makers, three sauce ladles London 1810 by Eley, Fearn and Chawner; a soup ladle and a basting spoon each London 1810 by Eley, Fearn and Chawner, five teaspoons, and a pair of condiment spoons, London 1810 by Eley, Fearn and Chawner; and one further table fork. 4930g, (158.5ozt). In fitted oak box. **£2,000-3,000**



- 319 A George IV silver snuff box, by John Bettridge, of rectangular form with gilt interior, the hinged cover with embossed decoration depicting a classical scene with foliate borders on cover and base, with inset floral thumbpiece, engraved to the interior: 'To Mr Joseph Ripley, With The Kindest Regards, of C. & O. Saunders', measuring approximately 8.1cm x 5.2cm, hallmarked Birmingham, 1825; 173.9 grams. **£1,500-2,000**





## Fine Jewellery, Watches & Silver, 22nd May, 2025 09:30

- 320 A Victorian square silver dish with embossed scrollwork, by Fenton Brothers, Sheffield 1895, the wide inverted rim with repousse scrolled foliate, centre engraved with a family crest, 23.0 cm wide, 343.0 grams (11.02 ozt). **£200-300**



- 321 A Swiss bachelor teapot, Geneva circa 1720, low-bellied with swan neck spout and hinged domed cover, handle removed, crested and fully engraved with floral and foliated patterns, to a round ring foot, Swiss assay marks to the base, 12.5 cm tall, 341.9 grams. (10.99ozt) **£200-300**



- 322 A silver pierced oval dish of acorn design, by Stower & Wragg Ltd., Sheffield 1942, with pierced segments and a moulded border, supported on a ring pedestal foot, 31.5 x 25.5 cm, 876.6 grams (28.18 ozt). **£300-500**



- 323 A silver five-piece tea service, of shaped oval form comprising a teapot, a coffee pot, a hot water jug, a milk jug and a sugar basin, London 1931, 249 grams (85ozt). **£800-1,200**



- 324 A silver pierced two-handled pedestal dish of vine design, by Stower & Wragg Ltd., Sheffield 1942, of round form with pierced decorations, moulded border and handles, on a stepped circular pedestal, 41.0 cm wide, 1158.7 grams (37.25 ozt). **£400-600**



## Fine Jewellery, Watches & Silver, 22nd May, 2025 09:30

- 325 A set of eight silver goblets, each with a flared bowl on a baluster stem and flared stepped foot, each engraved with a name, Birmingham 1975, 13.5cm high, 51 ozt, (1445 grams). **£500-700**



- 326 A George IV silver snuff box, of rounded rectangular form, with engine-turned pattern, hinged cover centred with a rectangular cartouche with hunting dog family crest, gilt interior, hallmarked London 1821, with maker's marks for George Turner & Thomas William Biddell, measuring approximately 85mm x 58mm; 153.6 grams (4.94ozt). **£200-300**



- 327 A set of six George III bright cut Old English pattern tablespoons, London 1784 by John Lias; together with a basting spoon en suite, London 1792, maker's mark rubbed. 398.6g (12.8ozt) **£200-300**



- 328 Asprey & Co. - An early 20th Century heavy silver two-handled tray, 1917 by Gold and Silversmiths company for Asprey & Co London, the mandorla-shaped body with heavy cast and applied rococo handles and rim with flat chased classical decoration to the plateau, bearing engraved Asprey & Co marks to the underside 65.0cm wide, 2363 grams (76ozt); together with an 18th Century Hanoverian "Rat's Tail" basting spoon with later deep berried and matted decoration, DA and a Dove marks within a shield but date and Assay marks now extinct, 146 grams (4.7 ozt), 33.0cm long, in maroon leather case. **£600-800**



- 329 A George III silver hip flask, the slightly concave, tapering oval flask with pull-off gilded beaker and screw off cover. London 1793 by Henry Chawner, with duty mark. 14.4cm, 177.5g (5.7ozt) **£400-600**



## Fine Jewellery, Watches & Silver, 22nd May, 2025 09:30

- 330 A George III basket with swing handle, by Thomas Robins, London 1809, body embossed with scroll and floral design with floral handle and reeded rim, with monogram and family crest to the front, raised on four scroll feet, gilt interior, measuring approximately 17cm high; 361.1 grams (11.6ozt). **£200-300**



- 331 A composite silver canteen of King's Pattern flatware, Victorian and later, by Chawner & Co. and other makers, comprising eleven table forks, ten dessert forks, twelve table spoons, twelve dessert spoons, eleven tea spoons, six mustard spoons, twelve table knives and twelve dessert knives with filled handles, 3181.95 grams (112.24ozt) weighable. **£2,000-3,000**



- 332 A George II silver snuff box, circa 1730, of rectangular form with hinged cover depicting a classical scene, inset thumbpiece opening to reveal gilt interior, with tapered sides featuring reeded detail, measuring approximately 7.5cm x 5.8cm, with rubbed maker's marks; 79.2 grams. **£500-700**



- 333 A pair of modern silver three-light candelabra, with scrolling arms, knopped stems and stepped hexagonal bases. Reutilised by Harrods Ltd., Sheffield 1972, maker's mark SC, 28.0cm high, 3000 grams (96.46 ozt). **£1,000-1,500**



- 334 A George IV silver snuff box, by John Bettridge, of rectangular form with gilt interior, the hinged cover with embossed decoration depicting a classical battle scene, with foliate borders on cover and base, measuring approximately 8.5cm x 6cm, hallmarked Birmingham, 1829; 184.5 grams. **£1,500-2,000**





## Fine Jewellery, Watches & Silver, 22nd May, 2025 09:30

- 335 Harrods. A silver canteen for twelve people in a fitted case. Wellington pattern, comprising: twelve table forks, twelve dessert forks, twelve dessert spoons, twelve soup spoons, twelve coffee spoons, twelve teaspoons, four table spoons; twelve pairs of fish eaters, twelve silver handled table knives, twelve single-handled dessert knives and a three-piece carving set. Sheffield 1974 by Roberts and Belk. Gross weight weighable. 3639g, (117ozt). **£2,000-3,000**



- 336 A George III silver snuff box, by Peter and Ann Bateman, of oval form, the hinged cover and body decorated with floral and scroll detail engraving, with gilt interior, hallmarked London, 1797, measuring approximately 8.0cm x 5.5cm x 3.0cm; 101.3 grams. **£1,000-1,500**



- 337 A George II slip top spoon, London 1740, and a quantity of flatware, mostly Georgian; including three Old English pattern, with monogram engraved to terminals, Edinburgh 1781 by James Gilliland; a pair of George III bright cut tablespoons London 1809 by George Burrows, two further pairs of tablespoons and three single tablespoons, together with a set of six George III Old English pattern London 180 by Solomon Hougham, a further set of four dessert spoons similar, two table forks and a pair of salad servers Sheffield 1937 by Thomas Bradbury and Sons, and a Victorian fiddle pattern sugar spoon. Gross weight 1480 grams (47.6ozt). **£800-1,200**



- 338 A Victorian silver snuff box by Nathaniel Mills, London 1845, shaped rectangular with applied scrolls to the hinged cover and commemorative engraving to central cartouche; foliate engraved side and base and double scroll thumbpiece; gilt interior, 7.5 x 5.5cm; 102.1g. **£200-300**



- 339 A pair of William IV silver shell-shaped butter dishes, by Edward, Edward Jr., John & William Barnard, engraved with the Barton family crest of three boar's heads and the motto 'Fide Et Fortitudine', on three shell feet, London 1834; 330.3 grams (10.6 ozt). **£200-300**





## Fine Jewellery, Watches & Silver, 22nd May, 2025 09:30

- 340 A pair of silver taste vins, with circular debossed decoration and inset coin, hallmarked London 1928, measuring approximately 9.2cm across; 246.6 grams (7.93ozt). (2) **£200-300**



- 341 A set of four George III silver salts, by Rebecca Emes & Edward Barnard I, of cauldron form on four shell spreading feet with figural shoulders, with scroll and foliate chased sides, gilt interiors and two with cobalt glass liners, hallmarked London, 1817; 833.2 grams (26.7ozt) **£500-700**



- 342 An early 20th Century three-piece silver tea service, by E S Barnsley & Co (Edward Souter Barnsley), comprising a teapot of circular form, on four stepped feet with foliate shoulders, with ebonised finial on hinged dome cover and ebonised angular handle, together with matching two-handled sugar basin and cream jug, hallmarked Birmingham, 1912; 916.8 grams (29.4 ozt) **£600-800**



- 343 A Russian niello cigarette case, of rounded rectangular form, with Greek key decorations and a vacant cartouche to the cover, push thumbpiece opening to reveal gilt interior, with Moscow assay marks indicating zolotnik fineness 875/1000, 1893; measuring approximately 8.8cm x 7.4cm; 119.8 grams. **£200-300**



- 344 A small quantity of silver Old English and fiddle pattern flatware, majority with monogrammed finials, comprising three George III basting spoons, five table spoons, three table forks and four dessert spoons; 936 grams (30.0 ozt) **£300-500**



## Fine Jewellery, Watches & Silver, 22nd May, 2025 09:30

- 345 A mixed part canteen of silver fiddle pattern flatware, Victorian and later, comprising twenty-three table forks, ten dessert forks, seven dessert spoons, six tea spoons, 2313.32 grams (81.6 ozt). **£800-1,200**



- 346 A Victorian silver gilt snuff box, by James Creswick, of cartouche form, the hinged cover with embossed design depicting a tavern scene, with gilt interior, hallmarked Sheffield, 1847, engraved to the base: 'James Creswick, Crookes Moor, Sheffield'; measuring approximately 8.8cm x 7.2cm x 1.8cm, 172.3 grams. **£1,500-2,000**



- 347 A George III three-piece silver tea service, by Thomas Wallis II, featuring a teapot, the oval low-bellied body engraved with floral and foliate detailing, the handle with ivory insulators, together with matching cream jug and two-handled sugar bowl, both with gilt interior, hallmarked London 1808; Total weight of items 996.7 grams. (32.0 ozt). Ivory certification reference B6ETEF3Z **£300-500**



- 348 Eleven mixed Old English pattern tablespoons, including four with dragon crests engraved to terminals, London 1785 by Peter and William Bateman; a pair with monograms engraved to terminals London 1792, maker's mark IB, a further pair also with monograms engraved to terminal London 1790 by John Lias, and three further Georgian tablespoons; together with a small quantity of silver plated flatware. 579.4g (24.4ozt). **£300-500**



- 349 A George II large silver tankard, by John Fray, London 1753; of baluster form with reeded girdle, a stepped and domed hinged cover with chair-back thumb piece, scroll handle with heart terminal, raised on circular spreading foot, later engraved with elaborated initials amongst scrolled foliate, scratch engraved initials 'RW' to the base, 20.0 cm high, 743.2 grams (23.89 ozt). **£800-1,200**



## Fine Jewellery, Watches & Silver, 22nd May, 2025 09:30

- 350 A late Victorian Old English pattern canteen of flatware by John Round & Son Ltd, comprising twelve table forks, twelve dessert forks, eleven dessert spoons, twelve table spoons, and six teaspoons, Sheffield 1899, together with a mixed collection of silver flatware, a silver-plated pusher and spoon, and a silver-plated sugar sifter, 3146 grams (111ozt) weighable. **£1,500-2,000**



- 351 A mixed quantity of silver flatware including six George III table forks, Hanoverian pattern, London 1807 by Solomon Hougham, monograms engraved to terminals, and three tablespoons en suite; together with a quantity of other mixed flatware. Gross weight 1192g (38.3ozt). **£400-600**



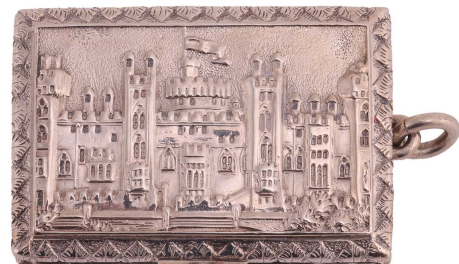
- 352 A set of six George IV silver Newcastle fiddle pattern table spoons, 1829, maker's mark JD, 360 grams (12.7ozt). **£200-300**



- 353 A Victorian three-piece silver tea set by William Hutton & Sons (Edward Hutton), comprising a tea pot, the oval body with bright-cut and fluted decoration, with wooden handle and finial, together with a matching cream jug and two-handled sugar bowl, hallmarked London, 1882; 472.6 grams (15.19ozt). (3) **£250-350**



- 354 A Victorian silver castle top vinaigrette, by Gervase Wheeler, Birmingham 1839, of rectangular form with hinged cover depicting Windsor Castle, foliate borders to cover and base, with thumbpiece and attached jump ring, opening to reveal a gilt interior and pierced foliate grille, measuring approximately 4.5cm x 3.0cm; 29.4 grams. **£800-1,200**



## Fine Jewellery, Watches & Silver, 22nd May, 2025 09:30

- 355 A pair of Late Victorian Neoclassical-styled silver candlesticks and another pair of dwarf candlesticks; both by Martin, Hall & Co (Richard Martin & Ebenezer Hall), London 1890 and 1891, with loaded bases. (2) **£300-500**



- 356 A George III silver teapot and matched stand; the teapot by Robert Hennell I, London 1785, straight body with tapered spout and hinged cover, scrolled fruitwood handle and detachable ebonised finial, fully engraved with bright-cut floral swags and stippled ribbons, one of the oval cartouches is crested, 28.0 cm wide; together with a matched oval teapot stand by Thomas Wallis II, London 1804, centred with a wreathed family crest and another underneath, floral and stippled border, supported on four bracket feet, 16.0 cm wide; Total weight of items 579.2 grams. (18.62 ozt) **£400-600**



- 357 A silver pie crust edge salver by Adie Brothers, Birmingham 1929, with plain centred supported on three scroll feet, hallmarks to the base, 31.0 cm wide, 967.2 grams (31.09 ozt). **£400-600**



- 358 A Victorian three-piece tea set; circular with beaded border, leaf-capped scroll handles, paw feet. The teapot with cast bud finial and ivory insulators to the handle, the sugar basin and milk jug with gilt interiors, scroll engraved decoration to the bodies including monograms engraved within oval cartouches, London 1864 by Edward Ker Reid. 1417grams (45.5ozt). Ivory certification reference J2TJ6V37 **£400-600**



- 359 A silver hot water jug, by Thomas Russell & Co., Sheffield 1919, tapered body with low belly, with a scrolled ebonised wood handle, urn finial and a flared foot, 27.0 cm tall, 566.5 grams. (18.21 ozt) **£200-300**





## Fine Jewellery, Watches & Silver, 22nd May, 2025 09:30

- 360 A quantity of fiddle pattern flatware, including five tablespoons, eleven dessert spoons, seven dessert forks, a teaspoon, all with crests engraved to terminals, mixed dates and maker, and a basting spoon, crest engraved to terminal, Exeter 1839, by James Andrew Page. Gross weight 1293g (41.6ozt). **£400-600**

