

Fine Jewellery, Watches & Silver, 24th Oct, 2024 09:30

- 1 A pair of diamond and pearl day and night earrings, surmounts of trefoil form suspending detachable pearl drop capped with another trefoil cluster, encrusted throughout with brilliant-cut diamonds, estimated total diamond weight for both earrings 1.11ct (0.555ct each), peg and butterfly fittings, stud and fittings testing as 18ct, drop surmount testing as 14ct, overall length 2.9 cm, total weight 7.5 grams. **£300-500**



- 2 A trinity ring in 18ct tri-coloured gold, with three interlocking bands that resemble a Borromean link, which is also commonly referred to as a triple rolling ring or Russian wedding ring, stamped with London hallmarks, size J, each band measures 4.1 mm wide and 12.0 mm together when worn, total weight of item 12.4 grams. **£500-700**



- 3 Two gem-set pendants; first contains a shallow octagonal-cut sapphire of 14.7 x 13.0 x 4.4 mm, to bail and drop both set with circular-cut white sapphires, yellow metal testing as 14ct, 3.6 cm drop length; the other cluster pendant claw-set with tiers of circular-cut sapphires, suspending from a plain bail, unmarked yellow metal testing as 18ct, 3.0 cm drop; Total weight of items 8.9 grams. (2) **£300-500**



- 4 A pair of diamond stud earrings in 18ct white gold, each containing a round brilliant-cut diamond with an estimated weight of 0.50ct, in a flat collet to peg and butterfly fittings, London hallmarks, 7.5 mm wide, 2.4 grams. **£600-800**



- 5 A hinged link bracelet, comprising a series of hinged links, bright-cut engravings on both sides, completed with an S-hook, stamped with partial Chinese artisan mark and rubbed off fineness mark, testing as high carat, 17.0 cm in length, 7.5 grams. **£200-400**



Fine Jewellery, Watches & Silver, 24th Oct, 2024 09:30

- 6 A pair of pearl-set earrings of Calla lily form, set with keshi pearls as spadices, to an integral shepherd's crook ear wire, mounted in 9ct yellow gold, London 1986, maker's mark for Caroline Marie Taylor, cased within a Garrard box, 4.0 grams. **£100-150**



- 7 A Victorian gem-set hinged bangle, with one half of Etruscan revival design, featuring wirework detailing and set with two sapphires and three old-cut diamonds, leading to a concealed push bar clasp, safety chain and gem-set charm, with one stone deficit, in yellow metal marked '15', the inner diameter measuring approximately 63mm, 18.3 grams **£300-500**



- 8 A ruby-set eternity ring, channel-set with calibre-cut rubies, to an unmarked yellow metal mount tested as 18ct gold, size L, 1.4grams **£150-250**



- 9 A sapphire and diamond three-stone ring, centred with an oval-cut sapphire of 6.2 x 5.0 x 2.1 mm, claw-set between two brilliant-cut diamonds, with an estimated weight of 0.50ct, between chenier shoulders leading to shank, stamped 'PLAT 18ct', size O, 3.5 grams. **£500-700**



- 10 A square flat curb link chain, interspersed with rectangular spacers, to a conforming tongue clasp, Italian hallmarked '585', overall length 65.0 cm, 46.4 grams. **£1,500-2,000**



Fine Jewellery, Watches & Silver, 24th Oct, 2024 09:30

- 11 A pair of emerald and diamond cluster earrings, the central oval-cut emeralds measuring approximately 5.5 x 3.8mm, surrounded by ten round brilliant diamonds, in 18ct bi-coloured gold mounts and post fittings; overall 1.0 x 0.9 cm, 3.7 grams. **£400-600**



- 12 A heavy curb link bracelet, completed with a box clasp, push-in thumbpiece and safety chain, Chinese marks for 'pure gold' and artisan stamp 'Da Sheng', overall length 15.0 cm, total weight of item 66.4 grams. **£1,500-2,000**



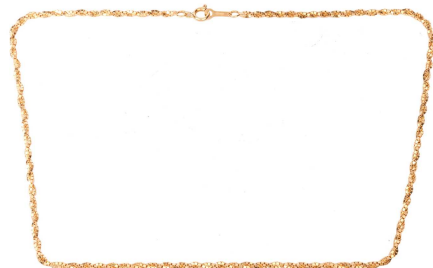
- 13 A pair of ruby and diamond cluster earrings, the central oval-cut rubies measuring approximately 6.2 x 4.0 mm, surrounded by ten round brilliant diamonds, in 18ct white gold mounts and post fittings; overall 1.1 x 0.9 cm, 4.0 grams. **£400-600**



- 14 A pair of cultured pearl stud earrings in 9ct gold mounts, together with a cultured pearl solitaire ring, in yellow metal tested as 18ct gold, size M; 6.4 grams **£200-300**



- 15 A twisted box link necklace, fastened with a spring-ring clasp, yellow metal marked '750', 41.5 cm in length, 9.8 grams. **£250-350**



Fine Jewellery, Watches & Silver, 24th Oct, 2024 09:30

- 16 Chopard - a 'Happy Diamonds' heart pendant on chain, heart-shaped glazed motif enclosing five floating brilliant-cut diamonds, bordered with pavé-set diamonds, drop length 2.1 cm, on a belcher link chain with lobster clasp measuring 41.0 cm, signed and numbered, Swiss convention marks for 18ct white gold, total weight of item 24.5 grams. No box no papers. **£1,000-1,500**



- 17 A hinged bangle of pierced scrollwork design with bright-cut patterns, to a concealed tongue clasp and figure-of-eight safety catch, unmarked yellow metal testing as 18ct, inner diameter 5.5 cm, 1.7 cm wide, total weight of item 25.5 grams. **£800-1,200**



- 18 A Victorian garnet suite comprising a necklace, two pendants and a pair of matching earrings; the necklace comprising graduated floral clusters composed of rose-cut garnets, to a conforming box clasp, hook fittings for attaching pendants, overall length 37.0 cm; both pendants are encrusted with various sizes of faceted garnets, with locket compartments and brooch fittings at the back, also a hinged loop to connect to the necklace, measuring 4.5 cm and 5.5 cm long respectively; together with a pair of conforming drop earrings with trefoil garnet clusters, screw-back fittings; all mounted in gilt metal, 37.6 grams. **£300-500**



- 19 A garnet-set bangle, of floral design, set with graduated round and pear-shaped garnets, to a 9ct gold hinged bangle, the inner diameter measuring approximately 62mm, with a concealed push clasp and safety chain; 22.5 grams **£300-500**



- 20 A double cable link necklace, completed with a lobster clasp, yellow metal struck with Italian assay marks '750', overall length 42.0 cm, 12.2 grams. **£300-500**



Fine Jewellery, Watches & Silver, 24th Oct, 2024 09:30

- 21 A diamond-set half-hoop ring, claw-set with six diamonds, measuring approximately 3mm, with an estimated total carat weight of 0.60ct, in a white metal mount marked '14K', size G 1/2; 3.3 grams **£200-400**



- 22 A fancy link bracelet with small heart charm, with granulated details completed with an S-hook clasp, attached with a heart panel charm and safety chain, Chinese marks for 'pure gold' and artisan, 15.0 cm long, 15.1 grams. **£350-450**



- 23 A sapphire cabochon spray brooch, of foliate design, claw-set with twelve sapphire cabochons, measuring approximately 6.5mm x 5.5mm each, in a white metal mount marked '14K', measuring approximately 66mm long, with a brooch pin fitting and trombone clasp to the reverse; 13.4 grams **£500-700**



- 24 An Edwardian fancy link bracelet, hinged openwork links adorned with woven and scrolled details, completed with a concealed tongue clasp with push-in thumbpiece and safety chain, yellow metal stamped '15', overall length 18.0 cm, 23.4 grams. **£500-700**



- 25 A ruby and diamond cluster pendant on chain, the oval-cut ruby of 5.9 x 4.1 mm, claw-set within a surround set with ten round brilliant diamonds, on a flat curb link chain with spring-ring clasp, British assay marks for 18ct white gold, pendant 1.5 cm drop, chain 46.0 cm in length, total weight of item 4.8 grams. **£600-800**



Fine Jewellery, Watches & Silver, 24th Oct, 2024 09:30

- 26 A star sapphire line bracelet, claw-set with twenty-one graduated star sapphires in hinged links, attached to quatrefoil links and a box clasp, unmarked yellow metal testing as 18+ct, overall length 14.5 cm, 18.0 grams. **£600-800**



- 27 A twisted rope link necklace, fastened with an S-hook clasp, unmarked yellow metal testing as 18ct, overall length 42.0 cm, 16.9 grams. **£400-600**



- 28 A grey star sapphire and diamond dress ring, featuring an oval cabochon of a light grey sapphire cabochon, approximately measures 12.6 x 8.8 x 8.7 mm, between foliate shoulders with diamond accents, in a wired gallery leading to a flat shank, white metal marked '14K', size L, 5.7 grams. **£600-800**



- 29 A jade link bracelet, comprising four oval jadeite cabochons in of dark green colour, approximately measuring 13.8 x 9.6 mm set in closed back mounts, attached to a series of fancy links with foliate engravings, completed with a fold-over clasp, yellow metal testing as 14ct, overall length 14.5 cm, 8.7 grams. **£300-500**



- 30 A diamond-set heart ring, featuring two intertwining heart motifs pavé-set with brilliant-cut diamonds, with an estimated total weight of 0.52ct, between grooved shoulders to a tapering shank marked '750', ring head 1.8 x 1.17 cm, size M, 6.2 grams. **£600-800**



Fine Jewellery, Watches & Silver, 24th Oct, 2024 09:30

- 31 A pair of jade clip-on earrings or dress clips; each containing an oval jadeite cabochon with a mottled green colour, set in a collet adorned with overlaid frame of bright-cut lily flowers, yellow metal testing as 18ct, to clip-on fittings testing as 14ct, 2.0 x 1.4 cm, 9.6 grams. **£200-300**



- 32 A torque bracelet in 9ct yellow gold, with spherical terminations, struck with Birmingham assay marks, inner diameter 6.2 cm, 12.6 grams. **£300-500**



- 33 A pair of jade and diamond earrings, each contains an oval jadeite cabochon of bright green colour, approximately measures 10.7 x 8.6 mm, in a scrolled ribbon mount encrusted with single-cut diamonds, fitted with screw-on backs, white metal marked 'New Universal', testing as platinum, drop length 2.3 cm, 7.4 grams. **£400-600**



- 34 A diamond solitaire ring, featuring an old-cut diamond with an estimated weight of 1.72ct, in an octagonal mount with pierced floral gallery, between shoulders embellished with single-cut diamonds, leading to a shank intricately engraved with laurel patterns, unmarked white metal testing as platinum, size L½, 3.8 grams. **£800-1,200**



- 35 Two nine-gem rings, set with various gemstones representing the nine planets in the solar system; to include a Thai 'Noppakao' princess ring, tiered ring head set encrusted with pear cabochons of various gemstones and circular-cut diamonds, yellow metal testing as 14ct, size L; and an Indian Navaratna cluster ring, comprising another set of nine gemstones such as ruby, coral, pearl etc., to a hammered D-profile shank, yellow metal testing as 18ct, size P; Total weight of items 12.6 grams. (2) **£400-600**



Fine Jewellery, Watches & Silver, 24th Oct, 2024 09:30

- 36 A diamond solitaire ring, featuring an old-cut diamond, measuring approximately 4.9mm with an estimated carat weight of 0.40ct, in a double four-claw setting, to a textured white metal mount tested as platinum, size K; 3.9 grams **£200-300**



- 37 A tourmaline and diamond dress ring, centred with a pale apple green oval-cut tourmaline of 10.7 x 7.5 x 5.0 mm, claw-set between shoulders set with baguette-cut diamonds, to a white metal shank testing as platinum, size Q, 8.3 grams. **£600-800**



- 38 A pearl-set spray brooch cum pendant, claw-set with various-sized round cultured pearls to a textured foliate mount, brooch fittings to the reverse, also attached with a bail, marked '22K' with Chinese artisan mark 'Da Sheng', 6.8 x 3.4 cm, 15.7 grams. **£500-700**



- 39 A sapphire and diamond trilogy ring in 18ct yellow gold, centred with an oval-cut sapphire of 6.1 x 4.0 mm, flanked by two brilliant-cut diamonds with an estimated total weight of 0.31ct, between tapered shoulders, London hallmarks with sponsor's mark 'ALtd', ring size O, weighs 3.8 grams. **£250-400**



- 40 A pearl-set spray brooch, claw-set with twelve baroque pearls in a branching foliate mount, one stone deficient, fitted with pin stem and a trombone clasp, white metal stamped '14K' and Chinese maker's mark 'Hang Lung' (恒隆), 5.7 x 3.5 cm, 21.5 grams. **£400-600**



Fine Jewellery, Watches & Silver, 24th Oct, 2024 09:30

- 41 A pair of diamond-set ear clips, of scrolling ribbon design, the curved rows set with old-cut diamonds, in white metal mounts tested as silver, measuring approximately 23mm, with ear clip fittings to the reverse; 11.8 grams **£600-800**



- 42 A diamond-set floral cluster brooch, in white metal tested as platinum, the central diamond measuring approximately 5.6mm, in a bright-cut setting, surrounded by ten claw-set diamonds, with a total estimated carat weight of 2.15ct, measuring approximately 35mm long, with a brooch pin fitting to the reverse, and hidden pendant loop; 5.8 grams **£600-800**



- 43 A Mikimoto cultured pearl choker and a pair of matching earrings; the choker comprising five rows of round cultured pearls, with bar spacers, to a box clasp set with an oval shell cameo, in 9ct gold, struck with London import marks as well as maker's mark for Mikimoto, 34.0 cm long, cased; together with a pair of pearl half hoop earrings with twisted rope spacers, peg and butterfly fittings, yellow metal testing as 9ct, 2.2 cm drop; Total weight of items 44.7 grams. (2) **£200-300**



- 44 A jade and diamond halo ring, featuring an elongated oval jadeite cabochon of yellowish-green colour, approximately measuring 22.0 x 10.7 x 4.3 mm, framed within a surround set with brilliant-cut and old-cut diamonds, with an estimated total weight of 0.88ct, gallery and shoulders pierced with scrollwork design, ring head 2.6 x 1.9 cm, size K, 6.4 grams. **£300-500**



- 45 A pair of diamond-set floral cluster earrings, the central diamonds measuring approximately 4.8mm, with an estimated carat weight of 0.40ct each, claw-set in a bright-cut setting and surrounded by eight diamonds, giving a total estimated carat weight of 2.40ct, in white metal settings tested as silver, with screw-back fittings; 5.2 grams **£600-800**



Fine Jewellery, Watches & Silver, 24th Oct, 2024 09:30

- 46 An emerald and diamond cluster ring in 18ct yellow gold, centred with an oval-cut emerald of 6.9 x 5.0 x 3.0 mm, surrounded by ten brilliant-cut diamonds with an estimated total weight of 0.57ct, London assay marks and maker's mark 'ATLd', ring head 1.5 x 1.2 cm, ring size O, 6.5 grams. **£600-800**



- 47 A pearl-set line bracelet, comprising a row of eleven off-rounded button pearls in hinged mounts, attached to sections of lozenge-shaped links and completed with a conforming box clasp with safety chain, stamped with Chinese artisan mark 'Yuan bao' and fineness stamp 盾金 (for 83.5% gold), overall length 14.5 cm, total weight 20.0 grams. **£300-500**



- 48 A keshi pearl necklace, a series of links composed of twisted wire and keshi pearls, connected with jump rings and completed with a tube clasp, unmarked yellow metal testing as 18ct, overall length 37.5 cm, 21.3 grams. **£200-400**



- 49 A star ruby and diamond-set cluster pendant, comprising a cabochon ruby measuring approximately 6.5mm x 4.5mm, surmounted by five round brilliant diamonds, with an estimated total carat weight of 0.60ct, in a white metal mount tested as platinum, to a white metal box chain tested as 18ct gold and marked '750', measuring approximately 44cm; 4.5 grams **£500-700**



- 50 A diamond cluster ring in 14ct gold, the tiered pear-shaped head pavé-set with yellow-tinted brilliant-cut diamonds, between shoulders set with three rows of white and yellow-tinted diamonds, with an estimated total weight of 1.15ct, leading to tapering shank with British assay marks, size Q, 4.9 grams. **£400-600**



Fine Jewellery, Watches & Silver, 24th Oct, 2024 09:30

- 51 A cultured pearl ring and earrings suite, the ring set with a cultured pearl measuring approximately 8.8mm, in a diamond-set surround, of foliate design, to a white metal mount tested as 14ct gold, size M1/2, together with a matching pair of screw-back earrings, each featuring a pearl measuring approximately 7.7mm, in white metal settings tested as base metal; 9.5 grams **£500-700**



- 52 A diamond five-stone ring in 18ct yellow gold, set with five brilliant-cut diamonds of 3.0 mm, with an estimated total weight of 0.50ct, leading to a tapering D-section shank, size P½, total weight of item 4.6 grams. **£300-500**



- 53 A pair of sapphire and diamond cluster earrings, the central oval-cut sapphires measuring approximately 6.0 x 4.0 mm, surrounded by ten round brilliant diamonds, in 18ct bi-colour gold mounts and post fittings; overall 1.0 x 0.9 cm, 3.7 grams. **£400-600**



- 54 A baroque pearl pendant, of ovoid shape, to a crossover surmount with integral bail, channel-set with graduated brilliant-cut diamonds, unmarked yellow metal testing as 14ct, 2.9 cm drop length, 8.5 grams. **£300-500**



- 55 A Victorian diamond-set stomacher brooch cum pendant, set with a cluster of rose-cut diamonds in buttercup mounts, within a scrolling wreath-shaped surround, accented by blue enamel, suspending three articulated drops, brooch fittings to the back, unmarked metal testing as 14ct, overall dimension 8.2 x 5.5 cm, 31.1 grams. **£2,500-3,500**



Fine Jewellery, Watches & Silver, 24th Oct, 2024 09:30

- 56 A diamond solitaire ring, claw-set with a round brilliant diamond measuring approximately 10.1mm, with an estimated carat weight of 3.50ct, in a yellow metal mount tested as 14ct gold, size J1/2, 5.5 grams **£5,000-7,000**



- 57 A floral necklace and earrings ensuite set with carved coral, turquoise, citrine and diamond; the necklace with articulated drop pendant, comprising a large oval turquoise cabochon and an oval-cut citrine, suspending a carved coral flowerhead of 4.0 cm, embellished with oval-cut citrine and diamond accents, and further dangling a large turquoise drop below, adorned with intricate foliate surround fully set with white and brown brilliant-cut diamonds, attached to a mesh link necklace embellished with diamonds in collets as well as claw settings, completed with a textured box clasp in white metal marked '750', pendant drop 13.5 cm, overall length 44.0 cm; together with a pair of conforming earrings with post and omega clip fittings, mount testing as 18ct, ear post testing as platinum, 8.5 cm drop length. **£10,000-15,000**



- 58 A double-row diamond-set line bracelet, composed of twenty square links, each claw-set with four round brilliant diamonds, with a total estimated diamond carat weight of 4.00ct, in a white metal mount tested as platinum, with a concealed push clasp and safety clasp, measuring approximately 16.5cm; 21.9 grams **£2,000-3,000**



- 59 A diamond solitaire ring, featuring a round brilliant diamond, measuring approximately 8.2mm, with an estimated carat weight of 2.00ct, in a double four-claw setting, leading to a tapered gallery and white metal shank marked '14K', size H1/2; 3.9 grams **£3,500-4,500**



Fine Jewellery, Watches & Silver, 24th Oct, 2024 09:30

- 60 A pink sapphire and diamond parure comprising a necklace, a bracelet, a ring and a pair of pendant earrings, of scrolled floral design with bright-cut details; the bib necklace composed of single-cut diamonds set in navette-shaped mounts, with a border of pear-cut graduated pink sapphires, and further embellished with oval-cut clusters, connected to articulated links and a conforming box clasp, overall length 46.0 cm; conforming bracelet with concealed tongue clasp, 18.7 cm long; a panel ring with most of the stones missing, five pink sapphires present, ring head 3.2 x 2.5 cm, size P; and a pair of pendant earrings with ear post and omega fittings, 7.8 cm long; unmarked metal testing as 18ct, total weight of items 163.9 grams. (4) **£6,000-8,000**



- 61 A diamond-set 'Darling' hinged bangle, encrusted with brilliant-cut diamonds with an estimated total weight of 0.90ct, to bangle constructed with knife-edged bands, completed with a concealed tongue clasp with push-in thumbpiece, unmarked yellow metal testing as 14ct, inner diameter 5.7 cm, 36.5 grams. **£2,000-2,500**



- 62 A diamond-set necklace, of curvilinear form, partly constructed by articulated bar links, encrusted with brilliant-cut diamonds, with an estimated total weight of 2.50ct, completed with a box clasp, white metal testing as 18ct, pendant drop 10.5 cm, overall length 40.5 cm, total weight of item 29.6 grams. **£1,500-2,000**



- 63 An emerald and diamond three-stone ring in 18ct white gold, centred with an oval-cut emerald of 9.3 x 6.8 x 3.6 mm, claw-set between two brilliant-cut diamonds with an estimated total weight of 0.66ct, leading to a D-profile shank, Lonon 1978, size O, 4.4 grams. **£1,200-1,800**



- 64 A diamond-set bracelet, claw-set with twelve round brilliant diamonds, with an estimated total diamond carat weight of 2.16ct, leading to rectangular links, with scrolling bright-cut engraving, in a white metal mount marked '18K', with a push bar clasp and safety chain; 12.8 grams **£800-1,200**



Fine Jewellery, Watches & Silver, 24th Oct, 2024 09:30

- 65 A stylised spray brooch in 18ct gold by Cropp and Farr, textured flowerheads highlighted with circular-cut rubies, brooch fittings to the back, London 1974, 4.8 x 4.3 cm, 11.5 grams. **£400-600**



- 66 A diamond five-stone ring in 18ct white gold, set with five brilliant-cut diamonds of 3.0 mm, with an estimated total weight of 0.50ct, leading to a tapering D-section shank, size O, total weight of item 4.7 grams. **£300-500**



- 67 A star ruby and diamond dress ring, centred with an oval star ruby of 8.3 x 6.5 x 5.8 mm, claw-set between geometrical shoulders set with two old-cut diamonds on each side, with total estimated weight of 0.36ct, in scrollwork gallery leading to a flat shank, unmarked metal testing as 14ct, size J, 4.6 grams. **£300-500**



- 68 A pair of diamond-set earrings in 18ct gold, each earring featuring three graduated round brilliant-cut diamonds, in white gold mounts to yellow gold peg and butterfly fittings, estimated total diamond weight for both 0.82ct, 1.3 cm drop, 3.3 grams. **£400-600**



- 69 A diamond five-stone ring in 18ct white gold, set with five brilliant-cut diamonds of 3.4 mm, with an estimated total weight of 0.72ct, leading to a tapering D-section shank, size N½, total weight of item 3.7 grams. **£300-500**



Fine Jewellery, Watches & Silver, 24th Oct, 2024 09:30

- 70 Two Mabé pearl brooch cum pendants; the first contains a large Mabé pearl with blue overtones, approximately measures 17.7 mm, in a textured foliate surround with integral bail, trombone clasp to the back, white metal marked '14K' and Chinese artisan mark 'Hang Lung', 3.8 cm drop; another similar comprising a Mabé pearl with peach overtones, set in a ribbon surround with integral bail, brooch fittings to the back, yellow metal marked '585', 4.0 cm drop; Total weight of items 21.9 grams. (2) **£300-500**



- 71 A ruby-set Harem ring, comprising three flat bands adjoined at the base, each channel-set with a row of square table-cut rubies, in millgrained mounts and decorated with zigzag engravings, unmarked yellow metal testing as 18ct, size L, 4.0 grams. **£300-500**



- 72 A diamond-set link bracelet in 18ct gold, comprising a series of articulated bar links, interspersed with ten round brilliant-cut diamonds in claw settings, with an estimated total weight of 1.00ct, completed with a concealed tongue clasp and double safety catches, overall length 17.5 cm, 11.8 grams. **£700-900**



- 73 A diamond trilogy ring, vertically set with three graduated old-cut diamonds in millgrained mounts, with an estimated total weight of 0.91ct, between bifurcated shoulders leading to shank stamped '18ct', size M, 2.8 grams. **£1,000-1,500**



- 74 A sentimental bracelet with disc charms, comprising a series of fancy figure of eight links, suspending eight disc charms, each engraved with the year and personal messages, London import marks for 9ct gold, 20.5 cm long, 29.9 grams. **£400-600**



Fine Jewellery, Watches & Silver, 24th Oct, 2024 09:30

- 75 A pair of diamond-set torpedo drop earrings, pavé-set with round brilliant diamonds and leading to a diamond-set surmount, measuring approximately 58mm long, with post fittings and earring-backs, in white metal stamped '750' and '18K'; 14.2 grams **£600-800**



- 76 A Modernist watermelon tourmaline brooch cum pendant, by Thomas A. Payne & C.P. Trigg, featuring a watermelon tourmaline slice in an 18ct yellow gold closed back mount, within geometrical surround partially textured with bark effect, pendant and brooch fittings to the back, Birmingham 1971, 3.7 x 3.4 cm, 8.4 grams. **£400-600**



- 77 A four-stone diamond-set ring, featuring old-cut diamonds, measuring approximately 4mm to 4.5mm, with an estimated total carat weight of 1.16ct, in a bi-colour metal mount marked '18ct' and 'Plat', size R; 3.4 grams **£1,500-2,000**



- 78 An Australian billiard medal on chain, the medal centred with a shield-shaped cartouche with billiard cues motif, embellished with two old-cut diamonds and a paste, garter surround embossed 'St George Amateur Championship' within a textured laurel wreath with scrolled surmount, engraved with further details of the winner at the back, dated August 1903, stamped '15ct', 4.6 x 3.7 cm, attached to a twisted rope watch chain with swivel clasp, testing as 14ct, 34.0 cm in length, total weight of item 42.5 grams. **£800-1,200**



- 79 A multi-row diamond-set ring, the three rows set with single-cut diamonds, with millegrain and scrollwork detailing, in a white metal mount tested as platinum; 5.1 grams **£300-500**



Fine Jewellery, Watches & Silver, 24th Oct, 2024 09:30

- 80 A pair of gem-set curved earrings, the three rows set with calibre-cut rubies and emeralds and old-cut diamonds, in a yellow metal mount, with millegrain detailing, tested as 18ct gold, measuring approximately 13mm, with screw-back fittings; 6.8 grams **£500-800**



- 81 A diamond trilogy ring, comprising three graduated transitional brilliant-cut diamonds, with an estimated total weight of 0.86ct, to a shank marked 'PLAT 18ct', size M½, 3.2 grams. **£400-600**



- 82 A giardinetti enamel pendant on a fancy link chain, the flower basket with a hovering butterfly pendant is adorned with polychromatic enamel, struck with Chinese marker's mark and fineness mark '90%', 3.2 cm long, suspending from a chain with faceted cable links and an S-hook clasp, unmarked yellow metal testing as 18ct, 40.0 cm long; 11.8 grams. **£400-600**



- 83 An unusual pair of 18th Norwegian gold, rock crystal and enamel mourning buckles; the oval slides containing plaited hair applied with entwined monograms, within applied scrolling foliate cartouches, the whole beneath a bevelled rock crystal cover, within an open leaf mounted border set with faceted rock crystals and with traces of applied white enamel decoration, the reverses with slides to accommodate ribbons and apertures to receive clips - (clips now absent). Carrying assay marks of 1775 Bergen city mark, assayer mark and Taurus zodiac monthly mark. **£400-600**



- 84 A diamond trilogy ring, comprising three graduated brilliant-cut diamonds, with an estimated total weight of 0.79ct, to a shank marked 'PLAT 18ct', size O, 2.6 grams. **£400-600**



Fine Jewellery, Watches & Silver, 24th Oct, 2024 09:30

- 85 A Victorian giardinetti mourning brooch, of a floral basket form, set with seed pearls, turquoise cabochons and circular-cut garnets, with glazed compartment and brooch fittings to the back, testing as 18ct, 2.2 cm wide; 3.9 grams **£200-400**



- 86 A ruby cabochon and diamond dress ring, centred with an oval ruby cabochon of 5.9 x 5.0 x 2.8 mm, in a six-claw setting between two brilliant-cut diamonds with an estimated total weight of 0.20ct, to shoulders with inverted grooves, white metal stamped '750', size N, 4.1 grams. **£200-300**



- 87 A nephrite fob seal, in form of two back-to-back griffons, suspending from a loop, set with a cushion-shaped nephrite panel of 2.5 x 1.6 cm, engraved with monogram, unmarked yellow metal testing as 14ct, 4.5 cm drop, 22.6 grams. **£300-500**



- 88 A diamond half-hoop ring, coronet-set with five old-cut diamonds, estimated total weight of 0.55ct, between chenier shoulders to shank stamped '18ct', size M, 3.0 grams. **£200-300**



- 89 An onyx and seed pearl gentleman's dress set, with a pair of cufflinks and three buttons, of octagonal design and reeded borders, in bi-colour metal marked '18ct' and 'Platinum'; 12.1 grams **£200-300**



Fine Jewellery, Watches & Silver, 24th Oct, 2024 09:30

- 90 A diamond solitaire ring, featuring an old-cut diamond measuring approximately 5.1mm - 5.2mm, with an estimated carat weight of 0.50ct, in a double four-claw setting, leading to ridged shoulders, on a white metal mount marked '18K', size H; 3.6 grams **£200-300**



- 91 A hinged bangle, constructed in two curved halves adorned with fluted decorations, fastens with a concealed tension clasp with safety chain, unmarked yellow metal testing as 14ct, inner diameter 6.2 cm, 31.0 grams. **£300-500**



- 92 A diamond solitaire ring, of stylised floral design, featuring a round brilliant diamond, measuring approximately 4.5mm, with an estimated carat weight of 0.34ct, claw-set in a yellow metal mount with a raised gallery, hallmarked 14ct gold with London import marks, 1979; 4.6 grams **£400-600**



- 93 A necklace set with diamond and tanzanite, of sinuous design, comprising a series of articulated bar links, half encrusted with brilliant-cut diamonds, with an estimated total weight of 1.10ct, terminated with two oval-cut tanzanites of 6.1 x 4.2 mm and 4.9 x 3.2 mm respectively, completed with a box clasp, white metal marked '14K', overall length 42.0 cm, total weight of item 20.1 grams. **£800-1,200**



- 94 A jade and diamond halo ring, comprising an oval jadeite cabochon of deep green colour, approximately measures 15.0 x 11.9 x 2.6 mm, claw-set within a diamond surround, between trefoil shoulders also set with diamond accents, to a flat shank in white metal marked 'Platinum' in Chinese, ring head 2.0 x 1.8 cm, size M, 6.4 grams. **£600-800**



Fine Jewellery, Watches & Silver, 24th Oct, 2024 09:30

- 95 A diamond-set hinged bangle in 14ct gold, constructed of two slightly angular halves, decorated with fluted roundels and pavé-set with fifteen brilliant-cut diamonds, estimated total weight 0.50ct, tongue clasp and safety chain, London 1989, inner diameter 5.8 cm, 27.0 grams. **£600-800**



- 96 A green metamict zircon dress ring, centred with a trillion-cut metamict zircon of 10.3 x 10.6 x 6.2 mm, bypass shoulders claw-set with circular-cut white sapphires, leading to a flat shank in yellow metal testing as 18ct, size N½, 5.4 grams. **£200-300**



- 97 A pair of sapphire-set cufflinks, of Hellenistic style, each contains an oval sapphire cabochon of 8.0 x 5.8 mm, collet-set to a twisted surround and toggle backs, yellow metal stamped with Italian assay marks '750', and registration number for "L'oro", overall 2.0 x 1.5 cm, 13.8 grams. **£300-500**



- 98 A jarretière slide bracelet with buckle and mordant design, the woven mesh band completed with a buckle fastener and mordant, fittings marked '18', mesh links testing as 9ct, overall measurement 22.5 cm, could be adjusted as 16.5 cm to 19.5 cm long, total weight 33.1 grams. **£1,000-1,500**



- 99 A closed bangle with a gem-set charm, of ovoid shape with half fluted, set with round glass beads and engraved with undulating patterns, 3.7 cm drop, on a loop suspending from a hollow D-profile closed bangle, stamped with Italian assay marks '750' and registration number for Favari Augusto, inner diameter 6.7 cm; Total weight of item 18.7 grams. **£500-800**



Fine Jewellery, Watches & Silver, 24th Oct, 2024 09:30

- 100 A diamond solitaire ring and an eternity ring; the solitaire ring consists of a transitional cut diamond in an illusion mount, with an estimated weight of 0.38ct, to shank marked 'PLAT 18ct', size M; together with a diamond-set eternity ring, set with an array of single-cut diamonds to a band with engraved flat edges, white metal testing as platinum, size Q½; Total weight of items 6.0 grams. (2) **£300-500**



- 101 A diamond floral cluster pendant on chain, diamond cluster suspended within a teardrop-shaped surround in 22ct gold, London 1957, 3.3 cm drop length, suspending from two fine cable link chains with toggle clasps, Dutch assay marks '585', overall length 49.0 cm, total weight of item 9.9 grams. **£300-500**



- 102 A graduated twisted rope link necklace, intertwined with a fine cable link chain, half undone, completed with a spring-ring clasp, Italian hallmarks '750', overall length 45.5 cm, 17.3 grams. **£500-800**



- 103 Two gold rings; the 22ct gold wedding band with plain D-profile shank with flat edges, size P; together with a Mappin and Webb ring of geometric design, set with three brilliant-cut diamonds with an estimated total weight of 0.30ct, size O; Total weight of items 4.4 grams. (2) **£200-400**



- 104 A diamond dress ring, featuring an old-cut diamond of 5.7 mm with an estimated weight of 0.64ct, in a buttercup mount, between foliate shoulders further embellished with old-cut diamonds, to shank testing as 18ct, size P½, 3.2 grams. **£800-1,200**



Fine Jewellery, Watches & Silver, 24th Oct, 2024 09:30

- 105 A George V full sovereign mounted as a brooch, dated 1911, in a twisted rope and mesh surround, brooch fittings to the back, Italian assay marks '750', measuring 3.5 cm across, 14.1 grams. **£450-650**



- 106 A dress ring set with synthetic spinel, centred with an oval-cut synthetic spinel, claw-set to a pierced scrollwork surround, further encircled by a border of synthetic spinels, between tapered shoulders to a D-profile shank, yellow metal testing as 18ct, ring head 2.0 x 1.8 cm, size O½, 8.1 grams. **£300-500**



- 107 A fancy link necklace, completed with a hook clasp, unmarked metal testing as 14ct, overall length 77.0 cm, 16.3 grams. **£250-350**



- 108 A mid 19th-Century coral and diamond floral ring, the central lozenge-shaped panel set with a daisy head cluster, composed of a diamond chip and coral cabochons, closed back with carved and pierced bifurcated shoulders, unmarked yellow metal testing 18ct, ring size P, 4.7grams. **£250-300**



- 109 A trinity bangle in 18ct gold, formed of three interlocking bangles in yellow, rose and white gold, Italian and British marks, inner diameter 6.4cm, total weight 18.7 grams. **£500-700**



Fine Jewellery, Watches & Silver, 24th Oct, 2024 09:30

- 110 A diamond-set dress ring in 18ct yellow gold, comprising five brilliant-cut diamonds with an estimated total weight of 0.20ct, in square mounts to a flat band, London 2001, size M, 4.0 grams. **£300-500**



- 111 A jade crab bar brooch, centred with a crab motif with an oval jadeite cabochon and green paste as eyes, on a bamboo mount and brooch fittings to the back, yellow metal stamped '22' with Chinese maker's mark, 4.5 cm wide, 7.2 grams. **£200-300**



- 112 A diamond-set wedding band in platinum, the court-shaped band flush-set with five brilliant-cut diamonds, with an estimated total weight of 0.10ct, engraved with initials and date inside the shank, London 2003, 4.0 mm wide, size U, 9.9 grams. **£200-300**



- 113 A wedding band in 18ct yellow gold, decorated with bright-cut starbursts design and bordered with granulated details, London assay marks, size Q, 4.6 grams. **£200-300**



- 114 A pair of earrings and a diamond-set pendant on chain; the 18ct yellow gold foliate design earrings with integral hook fittings, 5.5 cm drop length; the cruciform quatrefoil pendant flush-set with five brilliant-cut diamonds, mounted in 18ct gold, 1.9 cm drop, 40.5 cm; Total weight of items 8.9 grams. (2) **£200-300**



Fine Jewellery, Watches & Silver, 24th Oct, 2024 09:30

- 115 A pair of diamond-set floral stud earrings with exchangeable gilt petals, stamens embellished with four brilliant-cut diamonds, estimated total diamond weight for both 0.30ct, fitted with 18ct yellow gold ear posts, 1.4 grams weighable. **£250-350**



- 116 A rhinoceros brooch in 18ct yellow gold, realistically modelled and textured, eye highlighted with a brilliant-cut diamond, brooch fittings to the back, London 1991, sponsor's mark partially reads 'WJ', 4.5 x 2.7 cm, 18.8 grams. **£600-800**



- 117 An amber cabochon dress ring, centred with a circular amber cabochon of 11.8 x 5.2 mm, within a stylised floral surround to a tapering shank, London hallmarks for 9ct gold, maker's mark for Paul Eaton, ring head 1.85 x 1.85 cm, size M½, 10.2 grams. **£200-300**



- 118 A pair of diamond stud earrings, bezel-set with round brilliant-cut diamonds, measuring approximately 3.6mm each, with an estimated total carat weight of 0.32ct, in 18ct white gold mounts, with butterfly earring backs; 1.6 grams **£250-350**



- 119 Lalique - 'Nysa' bracelet, comprising five curved and frosted crystal panels each depicting a nymph, mounted in gold-tone base metal, fastened by a sliding clasp with figure-of-eight safety catch, signed, internal circumference approx. 18.0 cm, 102.8 grams. **£300-500**



Fine Jewellery, Watches & Silver, 24th Oct, 2024 09:30

- 120 A gem-set dress ring, centred with an oval-cut synthetic sapphire of 11.9 x 9.8 x 6.8 mm, claw-set between diamond-set shoulders to a tapering shank, bi-coloured metal marked '750', size O, 10.1 grams. **£300-500**



- 121 A star sapphire dress ring and a pair of matching earrings; of bypass design, set with two round star sapphire cabochons of pale blue, embellished with diamond accents, to a yellow metal flat shank testing as 14ct, size M; together with a pair of conforming stud earrings, ear post and screw-on backs, mounted in yellow metal testing as 18ct; total weight of items 5.9 grams. (2) **£300-500**



- 122 A sapphire and diamond cluster ring in 18ct gold, comprising an oval-cut sapphire of dark blue colour, approximately measures 8.2 x 6.0 x 3.6 mm, encircled by a surround set with single-cut diamonds, between tapered shoulders, to shank bearing London assay marks, ring head 1.3 x 1.1 cm, size N½, 3.8 grams. **£400-600**



- 123 A Victoria Diamond Jubilee medal in a later locket on chain, medal by George William de Saulles, veiled bust to the left and young head to the reverse, in a glazed locket with granulated border, marked '9ct', to a gold filled chain, in a leather medal case. 22.6 grams weighable. **£600-800**



- 124 A pair of diamond stud earrings in 18ct yellow gold, each claw-set with a round brilliant-cut diamond of 4.3 mm, estimated diamond weight for both together 0.58ct, peg and butterfly fittings, British hallmarked, 1.5 grams. **£200-300**



Fine Jewellery, Watches & Silver, 24th Oct, 2024 09:30

- 125 An amethyst cocktail ring in Etruscan style, comprising an octagonal-cut amethyst of 15.2 x 11.0 x 10.3 mm, in collet setting to a tapering shank decorated with twisted rope details, yellow metal testing as 18ct, signed "Paul Eaton '06", size R, 22.6 grams. **£600-800**



- 126 A ruby and diamond spray brooch, comprising a ruby and diamond flowerhead cluster, to a curvilinear mount encrusted with graduated diamonds, brooch fittings to the reverse, bi-coloured metal testing as 18ct, 6.5 x 2.9 cm, 10.0 grams. **£500-700**



- 127 A Victorian sovereign pendant on chain, comprising an 1894 full sovereign soldered to a scrolled surmount, suspending from a fine box link chain with spring-ring clasp, yellow metal stamped with Italian hallmarks '750', chain 59.0 cm long, total weight 14.2 grams. **£500-700**



- 128 A gem-set dress ring in Etruscan design, set with a marquise-cut sapphire and a ruby, embellished with graduated brilliant-cut diamonds and corundum accents, to a wide tapering band with twisted rope details, yellow metal testing as 18ct, signed 'Paul Eaton ARMS 2011', size R, 14.1 grams. **£600-800**



- 129 A rose-cut diamond crossover ring, of scrollwork design, set with two rose-cut diamonds in cut-down mounts, leading to a D-profile shank, metal testing as 14ct, size L, 2.0 grams. **£200-300**



Fine Jewellery, Watches & Silver, 24th Oct, 2024 09:30

- 130 Cartier - a double C identity bracelet, comprising a three-coloured metal plate with 'C' terminals, attached to a bar link chain with tube clasp and safety chain, signed and numbered, partially rubbed Italian assay marks '750', 20.0 cm long, 16.2 grams. **£600-800**



- 131 A diamond half-eternity ring, pavé-set with twelve brilliant-cut diamonds, with an estimated total weight of 1.44ct, to a white metal D-profile shank marked '18ct', size P, 4.6 grams. **£600-800**



- 132 A Modernist agate brooch cum pendant by Thomas A. Payne, set with a free-formed banded agate slice, in conforming 18ct bi-coloured gold open back mount and adorned with cubic embellishments, pendant and brooch fittings to the back, Sheffield 1984, 4.4 x 2.8 cm, 11.9 grams. **£300-500**



- 133 A diamond half-hoop ring, comprising five graduated old-European-cut diamonds, with an estimated total weight of 2.74ct, in coronet setting to a D-profile shank, unmarked metal testing 18ct, size N½, 4.3 grams. **£1,500-2,000**

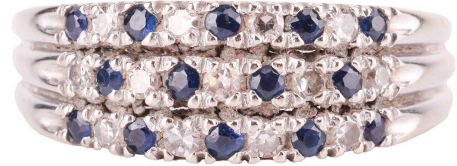


- 134 A Mughal style gem-set charm pendant, the shaped amethyst heart set with diamond chips, a carved emerald, garnet and ruby cabochons, depicting a bird amidst fruiting branches, attached to a swivel clasp stamped '9ct', heart pendant 2.7 x 2.6 cm, overall drop length 5.5 cm, 12.9 grams. **£200-300**



Fine Jewellery, Watches & Silver, 24th Oct, 2024 09:30

- 135 A three-row sapphire and diamond ring, alternating with circular-cut sapphires and single-cut diamonds, to a tapering shank, white metal testing as 14ct, size U, 4.8 grams. **£300-500**



- 136 A jade dress ring, featuring a deep green jadeite cabochon of 14.6 x 10.0 x 3.8 mm, in a cut-down collet between openwork foliate shoulders leading to a D-profile shank, Chinese artisan mark 'Shuang Yi', yellow metal testing as 18ct, size J, 5.3 grams. **£200-300**



- 137 An Albert chain in 18ct yellow gold, comprising a heavy curb link chain, terminated with swivel clasps and attached with a T-bar in the middle, Birmingham assay marks, 45.5 cm long, 83.4 grams. **£2,500-3,000**



- 138 Mikimoto - a pair of cultured pearl cufflinks, each centred with a round pearl of 6.5 mm, within an annular surround, to toggle fittings, yellow metal stamped 'K14' and maker's mark for Mikimoto, 1.5 cm wide, 8.2 grams. **£200-300**



- 139 A carved carnelian pendant on chain, the large carnelian depicting a rabbit amidst blooming flowers and peaches, to a foliate mount suspending from a grooved bail, unmarked yellow metal testing as 18ct, 6.5 x 3.9 cm, on a 52.0 cm long cable link chain with spring-ring clasp, marked '18K' however testing as 14ct, total weight of item 58.0 grams. **£800-1,200**



Fine Jewellery, Watches & Silver, 24th Oct, 2024 09:30

- 140 An emerald and diamond-set dress ring, featuring an octagonal-cut emerald, measuring approximately 9.1mm x 7.3mm x 4.7mm, flanked by four bezel-set graduated princess-cut diamonds, in a bi-colour metal mount marked '18ct', size Q1/2; 5.1 grams **£500-700**



- 141 A pair of cultured pearl stud earrings, each comprising a round pearl of 6.1 mm with pink overtones, to post and butterfly fittings, unmarked yellow metal testing as 18ct, in an Asprey case, total weight of item 1.2 grams. **£200-300**



- 142 Chanel - a 1992 padded black leather bangle, dangling with six Cocomark circular charms, plaque signs '29', internal circumference 19.0 cm, boxed. **£300-500**



- 143 Chanel - two pairs of drop earrings by Victoire de Castellane from the 1990 Spring Summer collection, of twisted rope design, one set with large faux pearls, the other with green and blue Grippoix glass, signature and clip-on fittings to the back, approximately 13.0 cm long. (2) **£400-600**



- 144 Chanel - a brooch suspending a classic flap bag charm from a coin with a crowned Cocomark, brooch fittings and maker's mark to the back, 7.5 cm drop length. **£200-300**



Fine Jewellery, Watches & Silver, 24th Oct, 2024 09:30

- 145 Chanel - a pair of Baroque-style cherub and faux pearl drop earrings, circa 1980s, clip-on fittings and signature to the back, overall length 10.0 cm. **£400-600**



- 146 Chanel - three pairs of clip-on earrings; the first pair of domed circular resin in coral colour, with applied gold-tone Cocomark, signed '24', 3.5 cm; a pair set with mother-of-pearl round panels, applied with CC logo in brush finish, marked '95A', 3.4 cm; a pair of domed faux pearl earrings, in a Matelasse surround, marked '93P', 3.0 cm. (3) **£300-500**



- 147 Chanel - three pairs of clip-on earrings; the first pair of enamelled ribbon design, centred with a camellia motif and suspending a faux pearl drop (one deficient), signed, 4.5 cm drop; a pair of white disc form earrings with curb chain border, centred with a cartouche with shamrock motif, signed, 4.0 cm; and a mother of pearl disc earrings with Cocomark on quilted black domes, one needs repairing, signed, 4.0 cm. (3) **£300-500**



- 148 Chanel - a pair of swing earrings, each comprising a domed surmount, suspending a large black acrylic sphere, studded with gold-tone Cocomarks and interspersed with circular-cut rhinestones, clip-on fittings and maker's mark to the back, 9.5 cm drop length, spheres approximately measuring 4.5 cm wide, boxed. **£400-600**



- 149 A pair of Chanel clip-on earrings of twisted rope design, set with a circular faux pearl, signed '96A', 3.0 cm wide; and another pair of similar disc-shaped earrings, embellished with CZ, unbranded, 4.0 cm wide. (2) **£200-300**



Fine Jewellery, Watches & Silver, 24th Oct, 2024 09:30

- 150 Chanel - a four-row chain belt suspending a perfume bottle charm, comprising a series of curb links, fastened with a hook clasp signed 'Chanel', approximately 82.5 cm, boxed. **£300-500**



- 151 Two pairs of clip-on earrings; to include a pair by Gianni Versace, centred with Medusa head logo and encrusted with faceted pastes, fittings and maker's mark to the back, 3.0 cm; together with another pair of lattice design, framed by faux pearls, unbranded, 4.0 cm wide. (2) **£200-300**



- 152 Chanel - a long faux pearl necklace with spacers, designed by Victoire de Castellane, comprising a series of round faux pearls, flanking oval plaques with armorial engravings, completed with a spring-ring clasp, signed and marked '26', approximately 88.0 cm long. **£500-700**



- 153 Chanel - a pair of Byzantine-style clip-on earrings, circa 1970s, set with buffed top red and green Grippoix glass and faux pearls, maker's mark to the back, 8.0 cm in length, boxed. **£400-600**



- 154 Chanel - a long beaded necklace, designed by Victoire de Castellane, double-sided faux pearls flanking cushion-cut rhinestones, and quilted texture links, fastens with spring-ring clasp and dog clip clasp, signed and marked '23', overall length 96.0 cm. **£300-500**



Fine Jewellery, Watches & Silver, 24th Oct, 2024 09:30

- 155 Chanel - two pairs of faux pearl disc clip-on earrings; the first pair of button design, the encircling surround signed CHANEL with flagship store address and telephone number, marked '23', 3.5 cm wide; the other pair of matelasse domed design, encompassed with a frame of round faux pearls, marked '23', 4.5 cm wide. (2) **£200-300**



- 156 Chanel - a faux pearl necklace, designed by Victoire de Castellane, with bail and detachable drop pendant embellished with rhinestones, fastens with spring-ring and swivel clasp, signed and marked '23', overall length 44.0 cm, pendant 7.0 cm long. **£300-500**



- 157 A miscellaneous group of earrings; to include a pair of Chanel faux pearl drop earrings with applied CC logos, signed and marked '26' 6.0 cm long; a single Chanel disc earring in black velour fabric with beaded border and applied logo, signed and marked '23', 4.5 cm wide; another similar Chanel single earring with applied logo on black velour, signed and marked '23', 4.0 cm wide; a single Chanel earring with faux pearl and hexagonal-cut pastes, signed, 3.0 cm wide; a single Chanel hoop earring with logo surmount, 9.0 cm drop; a single Moschino thimble tassel earring and others. **£200-300**



- 158 An arrow bar brooch set with sapphire and diamond, by Paul Longmire, the point and shaft set with calibr  -cut sapphires, fletching encrusted with brilliant-cut diamonds, mounted in 18ct white gold fitted with pin stem and trombone clasp, London 1987, 6.0 cm long, in original Longmire case, 5.2 grams. **£400-600**



- 159 A box link necklace with cultured pearl spacers, eight round pearls of 7.0 mm, completed with a spring-ring clasp, yellow metal struck with Italian hallmarks for 18ct, overall length 63.0 cm, total weight 20.4 grams. **£600-800**



Fine Jewellery, Watches & Silver, 24th Oct, 2024 09:30

- 160 An Edwardian peridot and split pearl pendant brooch, of openwork foliate design, set with two peridots and encrusted with graduated seed pearls, fitted with bail and pin stem to the verso, yellow metal marked '15ct', overall measures 4.8 x 2.7 cm, 4.4 grams. **£200-300**



- 161 A diamond cross pendant on chain, collet-set with a round brilliant-cut diamond at the centre, on pavé-set arms terminated with trefoil clusters, estimated total weight 0.75ct, set in 18ct white gold, 3.9 cm drop, on a foxtail chain measuring 49.0 cm long, Italian marks '750', total weight of item 8.5 grams. **£400-600**



- 162 A pair of 18ct tri-coloured gold hoop earrings, each comprising three intertwined bands in different colours, complete with an ear post and omega clip fitting, marked 'ITALY K18' along with British import marks, 2.0 cm drop length, total weight of item 11.0 grams. **£300-500**



- 163 Chopard - a 'Happy Diamonds' heart ring in 18ct white gold, heart-shaped motif enclosing a single floating brilliant-cut diamond, to a tapered flat shank embellished with three rows of pavé-set diamonds, signed and numbered, Swiss convention marks, head measuring 9.5 mm, size N½, 13.2 grams.
No box no papers. **£600-800**



- 164 A diamond cross pendant on chain, the pendant of cruciform collet set with eleven brilliant-cut diamonds, with an estimated total weight of 0.56ct, mounted in 18ct yellow gold, 2.4 cm drop length, on an 18ct gold fine curb link chain of 46.0 cm, total weight of item 5.3 grams. **£200-300**



Fine Jewellery, Watches & Silver, 24th Oct, 2024 09:30

- 165 A jadeite pendant, of bi disc form, approximately measures 2.5 cm across, in mottled bright green colour, centred with a diamond highlight, mounted to a tapered bail, white metal marked '750', total weight 7.4 grams. **£200-400**



- 166 A diamond-set 'Dearest' bracelet, a love token with individual links spelling out the message 'DEAREST', encrusted with rose-cut diamonds, to a curb link chain with tongue clasp, overall length 17.5 cm, 9.6 grams. **£500-800**



- 167 A diamond halo pendant on chain, claw-set with a round brilliant-cut diamond with an estimated weight of 0.58ct, within a tiered halo surround encrusted with diamond accents, attached to a cable link with spring-ring clasp, white metal marked '750', pendant 1.1 cm wide, overall length 46.0 cm, 3.0 grams. **£500-700**



- 168 A curb link bracelet, comprising a series of hollow links completed with a tongue clasp with push-in thumbpiece along with safety catch, Italian assay marks '750', overall measuring 19.3 cm long, 16.5 grams. **£500-600**



- 169 An Edwardian demantoid garnet and diamond floral dress ring, centred with a tiered daisy head cluster composed of old-cut diamonds and demantoid garnet, further encircled by an oval surround set with demantoid garnets, in a scrolled gallery between diamond embellished shoulders, unmarked bi-coloured metal testing as 18ct and platinum, ring head 1.2 x 1.05 cm, size F, 2.8 grams. **£400-600**



Fine Jewellery, Watches & Silver, 24th Oct, 2024 09:30

- 170 A pair of acorn dormeuse earrings set with pearl and diamond, each set with an old-cut diamond surmount, dangling a pearl acorn motif in a diamond-encrusted cap, back to front ear-wires testing as 15ct gold, overall drop length (from wire to drop) 2.0 cm, 2.9 grams. **£400-600**



- 171 A diamond-set floral cluster ring, featuring an old-cut diamond, measuring approximately 5.2mm, with an estimated carat weight of 0.50ct, surrounded by ten smaller old-cut diamonds, in a bi-colour metal mount tested as 18ct gold, size K1/2; 1.9 grams **£400-600**



- 172 A leaping hare brooch encrusted with circular-cut emeralds and diamond chip as eye, brooch fittings to the back, yellow metal testing as 14ct, 3.7 cm wide; 4.2 grams **£200-400**



- 173 Two pendants on chain; to include a boxing gloves pendant in rose metal stamped '9ct', on a 50.0 cm twisted rope chain in 18ct yellow gold; and a 9ct gold cross pendant on a 45.0 cm cable link chain stamped '9ct'; Total weight of items 34.0 grams. (2) **£500-800**



- 174 A set of three diamond-set rings of chevron design; each set with a princess-cut diamond of approximately 0.10ct, to three different coloured metal shanks, marked '750 CEI', size M; Total weight of items 16.6 grams. (3) **£500-600**



Fine Jewellery, Watches & Silver, 24th Oct, 2024 09:30

- 175 A ruby-set giardinetti brooch, with textured leaves in a twisted cable wicker basket, emanating eleven circular-cut rubies depicting flower blossoms, brooch fittings to the reverse, marked '22K' and stamped 'Malaysian gold', 3.0 x 2.4 cm, total weight of item 5.9 grams. **£300-500**



- 176 A cased pair of diamond-set cufflinks, each oval panel centred with a square plaque and star-set with a diamond highlight, connected with cable links, in 9ct rose gold, Chester 1923, 2.1 x 1.2 cm, 11.8 grams. **£200-300**



- 177 A diamond line bracelet, comprising articulated links, set with an array of brilliant-cut diamonds, with an estimated total weight of 11.12ct, to a concealed tongue clasp and safety catch, white metal marked 'PT950', overall length 17.5 cm, 28.7 grams. **£2,000-3,000**



- 178 A Victorian mourning brooch with hair work panel, together with an amethyst bar brooch; the mourning brooch of domed circular form, set with a rock crystal cabochon and a seed pearl star-set to the centre, encompassed with a frame of beaded details, outer dome further encircled with twisted rope decoration and an enamelled laurel wreath border, glazed compartment to the back encasing braided hair work, unmarked metal testing as 15ct, 4.3 cm wide; the 9ct yellow gold bar brooch centred with an oval amethyst flanked by diamond accents, Birmingham 1989, 5.3 cm wide; Total weight of items 26.2 grams. (2) **£250-350**



- 179 A flat herringbone link necklace, completed with a lobster clasp, yellow metal marked '14kt' and 'Design Grotto Patent', overall length 50.0 cm, 12.6 grams. **£200-300**



Fine Jewellery, Watches & Silver, 24th Oct, 2024 09:30

- 180 A ruby and diamond trilogy ring, centred with an oval-cut ruby of 5.7 x 4.1 x 2.1 mm, set between two old-cut diamonds with a total estimated weight of 0.65ct, between tapered shoulders to a D-profile shank, marked '18ct PLAT', size P, 2.9 grams. **£400-600**



- 181 Chopard - a pair of 'Happy Diamond Icons' heart earrings in 18ct white gold, each comprising a heart-shaped motif with diamond border, enclosing a single floating brilliant-cut diamond, estimated diamond weight both together 0.80ct, ear post and backs fitted to verso, signed and engraved with Swiss convention marks, 1.0 cm wide, 4.7 grams. **£300-500**



- 182 A 9ct gold charm bracelet, the ball link bracelet with heart-shaped padlock clasp, suspending sixteen various charms including a rickshaw, a sampan, a junk rig, a farmer with carrying pole, and nautical themed charms such as a shell, a seahorse etc., together with three loose charms, most of them individually marked '9ct', total weight of items 35.9 grams. **£400-600**



- 183 A ruby and diamond half-eternity ring in 18ct white gold, alternating with five circular-cut rubies and five brilliant-cut diamonds, leading to a tapered shank, London 1978, size O½, 3.7 grams. **£250-350**



- 184 A diamond pendant on chain, consisting of a single round brilliant-cut diamond with an estimated weight of 0.45ct, claw-set to a surmount with diamond accent, 1.2 cm drop, to a trace link chain of 39.0 cm long, both testing as 18ct, 2.6 grams. **£200-400**



Fine Jewellery, Watches & Silver, 24th Oct, 2024 09:30

- 185 An emerald and diamond cluster pendant and earrings en-suite; the pendant centred with an oval-cut emerald of 6.7 x 4.8 mm, encircled within a diamond surround, 1.7 cm drop, on a 41.0 cm fine trace link chain; together with a pair of stud earrings of conforming design, peg and butterfly fittings, 1.0 cm in length; all struck with British assay marks for 18ct white gold, total weight of items 5.0 grams. (2) **£400-600**



- 186 A bismark link bracelet in 9ct yellow gold, the interwoven links fastened by a concealed tongue clasp with push-in thumbpiece and a safety catch, signed C&F for Cropp and Farr, Birmingham 1958, 18.0 cm long, 3.6 cm wide, 79.7 grams. **£800-1,200**



- 187 A gem-set anniversary pendant on chain, the medallion centred with a flower basket motif with 'Mother' banner, highlighted with a ruby, sapphire and an emerald, to a surround pierced with 'Happy Anniversary', yellow metal marked '14K', 3.5 cm wide, on a rope chain with Italian hallmarks '750', 74.0 cm in length, total weight of item 17.6 grams. **£250-350**



- 188 An aquamarine and diamond three-stone ring, featuring an oval-cut aquamarine of 8.4 x 6.6 x 4.6 mm, claw-set between tapered shoulders with diamond accents, leading to flat shank marked '14K', size P, 3.2 grams. **£200-300**



- 189 A tri-coloured brick link necklace, comprising tapered brick links with a brush finish, alternating in yellow, white and pink metal, bordered with fox tail links, leading to a box clasp, Italian marks '750', overall length 41.0 cm, 24.0 grams. **£600-800**



Fine Jewellery, Watches & Silver, 24th Oct, 2024 09:30

- 190 An old-cut diamond half-hoop ring, claw-set with five slightly graduated old-cut diamonds, with an estimated total weight of 0.40ct, leading to a D-profile shank in unmarked white metal testing as platinum, size Q, 3.8 grams. **£200-300**



- 191 Tiffany & Co. - a diamond-set interlocking circles pendant on chain, three annulets forming a Borromean ring in white, yellow and rose gold, pavé-set with brilliant-cut diamonds, to a fine cable link chain in 18ct white gold, signed and British hallmarked, pendant drop 2.3 cm, chain 46.0 cm long, 4.2 grams. **£500-700**



- 192 Two pearl-set dress rings; the first centred with a split pearl of 5.5 mm within a surround set with single-cut diamonds, between tapered shoulders leading to shank, marked 'PLAT 18ct', ring head 9.6 mm, size Q½; the other comprising five graduated split pearls in tapered mount engraved with a meandering pattern, unmarked yellow metal testing as 18ct, size R; Total weight of items 7.7 grams. (2) **£200-300**



- 193 Tiffany & Co. - a silver 'Olive Leaf' pendant, designed by Paloma Picasso; together with a matching bracelet and earrings, stamped '925' with maker's marks, in a branded pouch; 19.3 grams **£200-300**



- 194 A ruby and diamond five-stone ring, featuring two round brilliant diamonds set between three round-cut rubies, with an estimated total diamond weight of 0.37ct, in an 18ct white gold mount, size N; 3.1 grams. **£400-600**



Fine Jewellery, Watches & Silver, 24th Oct, 2024 09:30

- 195 Mikimoto - a cased cufflink and tie pin set, of chevron design, the cufflink set with a round cultured pearl of 6.7 mm, fitted with toggle backs, with a matching tie pin set with two round pearls, 4.0 cm long; all signed and marked 'K14', along with maker's mark of Mikimoto, in the original case, total weight of items 15.4 grams. **£200-300**



- 196 A pair of bow and spray ear-clips, claw-set with graduated single-cut rubies, in a four-row spray surmounting a bow, with hinged ear-clips to the reverse, in yellow metal tested as 18ct gold, measuring approximately 30mm, 7.8 grams **£300-500**



- 197 A pair of Tahitian cultured pearls earrings and matching pendant; the pair of earrings each consists of a round Tahitian pearl of 11.5 mm, in a floral mount with textured flower heads and diamond accents, fitted with ear post and omega clip, 1.8 cm drop; together with a matching pendant of similar design, featuring an egg-shaped Tahitian pearl of 13.0 mm wide to floral surmount, on a hinged bail, 3.5 cm drop; yellow metal marked '18K', total weight of items 18.5 grams. (2) **£300-500**



- 198 A diamond-set dress ring of knot design, channel-set with an array of baguette-cut diamonds, to a tapering shank, white metal marked 'PT900', size N½, 3.9 grams. **£200-300**



- 199 Tiffany & Co. - a diamond-set Etoile cross pendant on chain, the cross embellished with four brilliant-cut diamond accents, estimated total weight of 0.10ct, 2.0 cm drop, attached to a 40.0 cm fine cable link chain, 18ct yellow gold signed and struck with British hallmarks, in original case, 5.2 grams. No papers. **£400-600**



Fine Jewellery, Watches & Silver, 24th Oct, 2024 09:30

- 200 A soudé emerald and diamond cluster ring, featuring a marquise-cut soudé emerald of 15.5 x 6.1 x 4.8 mm, claw-set within a frame of brilliant-cut diamonds, with an estimated total weight of 1.14ct, to a wire gallery and shank, yellow metal marked '14k', ring head measures 2.5 x 1.8 cm, the bottom of the shank has been taped and resized to size M, 10.0 grams. **£500-700**



- 201 Three wedding bands; the first comprising a D-profile band adorned with flowerheads and scrolled foliate patterns, stamped '22K' and maker's mark Da Sheng (大生), size L½; the second decorated with pierced and bright-cut geometric patterns, marked 'pure gold' and maker's mark for Hua Seng Heng (和成興), size P½; and a plain tapered band marked '14kt' in size P; Total weight of items 11.8 grams. (3) **£350-450**



- 202 A graduated pearl necklace with diamond cluster clasp, comprising a series of round pearls from 2.0 to 6.2 mm, hand-knotted to a floral clasp composed of eight old-cut diamonds, with safety chain, metal testing as 14ct and platinum, overall length 40.5 cm, 5.9 grams. **£200-300**



- 203 An emerald and diamond five-stone ring, comprising two round brilliant diamonds set between three round-cut emeralds, estimated total diamond weight 0.37ct, in an 18ct white gold mount, size P; 3.2 grams. **£400-600**



- 204 A three-row graduated pearl bracelet and a George III mourning fichu pin; the bracelet comprising three strands of graduated round pearls, from 4.2 to 6.5 mm, with metal spacers, to a box clasp embellished with a foiled-back amethyst floral cluster, metal testing as 14ct, overall length 18.6 cm; the brooch centred with a glazed hairwork compartment framed by double row of split pearl borders, brooch fittings to the back, metal testing as 14ct, 2.0 cm wide; Total weight of items 26.1 grams. (2) **£200-300**



Fine Jewellery, Watches & Silver, 24th Oct, 2024 09:30

- 205 Mikimoto - a single row of cultured pearl necklace, comprising a row of uniform round pearls of 5.5 mm, completed with a rectangular fish hook clasp of geometric design and pearl accent, stamped with Mikimoto maker's mark and 'S', 38.5 cm in length, 15.6 grams. **£200-300**



- 206 A diamond belcher ring in 18ct gold, illusion-set with a brilliant-cut diamond with an estimated weight of 0.23ct, to a carved claw mount leading to a wide shank, London 1975, size O½, 12.7 grams. **£400-600**



- 207 A gate link bracelet of bi-coloured design, alternating with white and yellow 9ct gold links, fastened with a stylised lobster clasp, Italian and British hallmarks, 18.5 cm long, 16.9 grams. **£200-300**



- 208 A five-stone diamond-set ring, bezel-set with five graduated round brilliant-cut diamonds, with an estimated total carat weight of 0.49ct, in a bi-colour metal mount, with platinum hallmarks, size N; 5.6 grams **£200-300**



- 209 A Tahitian cultured pearl lariat necklace and a pair of matching drop earrings; comprising a wheat link chain suspending an off-round pearl of 11.2 mm mounted on a loop, to a slide-in clasp, British assay marks for 18ct gold, 52.0 cm overall length; together with a pair of dangling earrings each contain a round pearl of 8.5 mm, chain and post fittings in 18ct gold; Total weight of items 11.8 grams. (2) **£400-600**



Fine Jewellery, Watches & Silver, 24th Oct, 2024 09:30

- 210 A large citrine and diamond cocktail ring, featuring an oval-cut citrine of yellowish-orange colour, approximately measures 23.1 x 17.2 x 12.8 mm, in mount and shoulders embellished with pavé-set diamonds, leading to a flat shank, white metal stamped '750', size M½, 16.6 grams. **£500-700**



- 211 A diamond set half eternity ring pavé-set with two rows of single-cut diamonds, in flat-edged mount engraved with scrollwork patterns, between bifurcated shoulders to flat shank, unmarked white metal testing as 18ct gold, size Q, 3.6 grams. **£200-300**



- 212 A bi-coloured rectangular link bracelet; the matte finish links with polished rose coloured oval connecting links, tongue clasp with push-in thumbpiece, unmarked metal testing as 14ct, 20.5cm long, 14.3 grams. **£400-600**



- 213 A diamond cluster ring; composed of a central round brilliant cut diamond in claw mounts above two further tiers of round brilliant cut diamonds totalling eighteen stones, to a plain shank with shoulders, stamped '18ct' and tested as 18 carat white gold. Ring size O. 7.7grams. **£400-600**



- 214 A George III bracelet with enamel and seed pearl clasp, comprising four strands of off-round cultured pearls, approximately 7.0 mm in diameter, with bar spacers, to a navette-shaped clasp with glazed panel encapsulating seed pearl initials on a blue enamel ground, within a pearl surround, unmarked pink metal testing 14ct, 18.5 cm long, total weight of item 54.0 grams. **£300-500**



Fine Jewellery, Watches & Silver, 24th Oct, 2024 09:30

- 215 An early 20th century foliate brooch; the single flowerhead set with a circular cut sapphire, within a knotted stem. Marked '15ct'; 2.7cm width. 4.2 grams; together with four various dress studs. 6.3 grams **£200-300**



- 216 A citrine and diamond cocktail ring, featuring an oval citrine of yellowish-orange colour, with a domed surface and faceted pavilion, measuring 19.4 x 14.0 x 12.5 mm, set into a stylised mount embellished with lines of diamonds with an estimated total weight of 0.20ct, yellow metal marked 'K18', size M, 16.3 grams. **£300-500**



- 217 A fancy link bracelet, comprising a series of twisted rope design links, flanking circular button-shaped spacers, to a lobster clasp, links testing as 14ct, clasp marked and testing as 18ct, overall length 21.0 cm, 19.7 grams. **£600-800**



- 218 A sapphire and diamond-set ring, featuring an oval mixed-cut sapphire, measuring approximately 6.5mm x 6mm, accented by round brilliant diamonds of graduated sizes, bezel-set in an 18ct gold mount, size Q1/2; hallmarked 18ct gold, Sheffield, 1995; 11.1 grams **£400-600**



- 219 An emerald and diamond cross pendant on chain, the pendant centred with a collet-set shield-shaped emerald, and arms highlighted with four brilliant-cut diamonds, yellow metal testing as 18ct, 3.0 cm drop length, on a 9ct gold hayseed link chain with lobster clasp, 45.0 cm long, total weight of item 18.6 grams. **£400-600**



Fine Jewellery, Watches & Silver, 24th Oct, 2024 09:30

- 220 A diamond and sapphire half hoop ring, centred with an old-cut diamond with an estimated weight of 0.29ct, flanked by two oval-cut sapphires, in a scrolled and pierced gallery and shoulders, leading to a D-profile shank, unmarked yellow metal testing as 18ct, size Q, 5.4 grams. **£250-350**



- 221 A single-strand amber bead necklace with graduated butterscotch amber beads from 11.5 mm in length to the largest 33.0 mm, length 83.0 cm, 100.0 grams; and a red oval bead necklace of 78.0 cm, 86.7 grams. (2) **£300-500**



- 222 An opal and diamond bar brooch, the millegrain collet-set oval opal cabochon, measuring approximately 11.75mm x 9.5mm x 5.7mm, flanked by two claw-set old brilliant-cut diamonds, approximately 0.25ct total, to a knife-edge bar, mounted in presumed 14ct yellow gold, length 7.1cm, gross weight 5.9grs **£200-300**



- 223 Two cultured pearl necklaces, the first featuring pearls measuring approximately 8mm, with silver overtones, to a diamond-set roundel screw clasp, measuring approximately 45cm, together with a cultured pearl necklace, with pearls measuring approximately 7.5mm, the necklace measuring 84cm long; 107.6 grams. (2) **£200-300**



- 224 A sapphire and diamond-set foliate spray brooch, claw-set with fourteen oval mixed-cut sapphires, of graduated sizes, interspersed with baguette-cut and round brilliant diamonds, to a white metal mount marked '585', measuring approximately 55mm x 40mm, with a brooch pin fitting to the reverse; 17.6 grams **£500-700**



Fine Jewellery, Watches & Silver, 24th Oct, 2024 09:30

- 225 Mauboussin - a pair of clip-on earrings, of folded ribbon form, constructed by rows of flattened twisted cables with a twisted rope edge, fitted with omega clips, signed Mauboussin Paris, numbered 15166, French eagle head assay marks for 18ct, half maker's marks, 2.5 x 2.2 cm, total weight 14.3 grams. **£800-1,200**



- 226 A pavé-set diamond necklace, with a suspended diamond-set teardrop leading to a belcher chain featuring several bezel-set diamonds and diamond-set spacers, to a lobster clasp, in 18ct white gold, measuring approximately 44cm; 12.8 grams **£700-900**



- 227 Boodles - an 'Ashoka' diamond cluster ring in platinum, the Ashoka-cut diamond of 0.70ct, claw-set within a diamond halo surround, between shoulders further set with diamonds, signed and numbered, struck with London assay marks, ring head 9.6 x 6.8 mm, size K½, cased, 3.6 grams. principal diamond with IGI laser inscription: GT6K503409, stating colour grade G and clarity grade SI1. **£1,500-2,000**



- 228 A set of five Chinese jade and pearl shirt buttons, each comprising a butterfly motif with a pearl head and marquise jade cabochon abdomen, to a circular wire frame, loop attached at the back, unmarked yellow metal testing as high carat, 2.3 cm wide, total weight of items 15.6 grams. **£500-700**



- 229 A fire opal and diamond necklace, bracelet and earrings suite; the necklace comprises a series of graduated hinged oviform links with quatrefoil design, set with oval-cut fire opals and diamond highlights, to a mesh foxtail chain fastened with a tongue clasp, 44.0 cm long; conforming bracelet completed with a concealed box clasp and safety chain, 17.5 cm long; together with a pair of matching stud earrings, peg and butterfly fittings, 1.6 cm drop; unmarked metal testing as 18ct, total weight of items 110.1 grams. (3) **£3,000-5,000**



Fine Jewellery, Watches & Silver, 24th Oct, 2024 09:30

- 230 Three closed bangles; to include a pair with scrolling foliate patterns, marked with Chinese artisan mark 'Yuan bao' and fineness stamp 盾金 (for 83.5% gold), inner diameter 6.1 cm; and another similar with bright-cut patterns with rubbed off marks, testing as 18ct, inner diameter 6.2 cm; Total weight of items 27.4 grams. (3) **£800-1,200**



- 231 A ruby and diamond ballerina ring, featuring a cushion-cut ruby of 10.9 x 8.5 x 4.3 mm, claw-set within a ruffle surround encrusted with tapered baguette diamonds, to shoulders and shank constructed by wires, white metal testing as platinum, ring head 1.75 x 1.70 cm, size N, 7.9 grams. **£800-1,200**



- 232 A 14ct garnet bracelet, composed of ten circular clusters, with a central circular cut garnet within a millegrain setting and with eight outer stones, with chain link connections and a push-in box clasp. Stamped '585' and tests as 15 carat. 18.5cm length. 25.4 grams. **£500-800**



- 233 A diamond daisy head cluster ring, featuring a tinted yellowish-brown old-cut diamond of 5.5 mm, collet-set within a scalloped surround encrusted with ten old-cut diamonds, totalling estimated diamond weight 1.14ct, between tapered shoulders to D-section shank, ring head 12.0 mm, size O, 3.1 grams. **£2,000-3,000**



- 234 A Victorian Etruscan Revival hinged bangle set with garnet and diamond, collet-set with five graduated garnet cabochons, where the centre stone has a concave facet on the dome, highlighted with an old-cut diamond, in a mount in bloomed finish, further embellished with granulation and twisted cable details, completed with a concealed tongue-clasp and safety chain, interior engraved with 'A.P.Pringle April 24th 1862', inner diameter 5.3 cm, 28.3 grams.
From the family of James Lees-Milne, the secretary of the Country Houses Committee of the National Trust from 1936-1950 **£1,000-1,500**



Fine Jewellery, Watches & Silver, 24th Oct, 2024 09:30

- 235 A 19th-century diamond-set locket pendant, the circular pendant featuring graduated old-cut diamonds, surrounding a hinged glass compartment and leading to eight larger old-cut diamonds, in open-backed settings, two of which display yellow tints and one a green tint, claw-set in a bi-colour metal mount, presumed 18ct gold and silver, suspended from a closed-back surmount, set with an old-cut diamond measuring approximately 9.8mm x 8mm, the pendant measuring approximately 52mm long, to a yellow metal chain marked '750', measuring approximately 51cm, in a fitted box; 12.8 grams **£5,000-7,000**



- 236 Boodles - a 'Raindance' diamond-set bracelet, set in platinum, the articulated bar links collet-set with various sized brilliant-cut diamonds, with an estimated total diamond weight of 2.10ct, completed with a tongue clasp with fold-over safety catch, signed and numbered, London hallmarks, 18.5 cm in length, cased, 13.6 grams. **£19,300 RRP £3,000-5,000**



- 237 Cartier - a Panthère cuff bracelet in 18ct tricoloured gold, sprung bangle with panther head terminations, signed and numbered 756830, convention mark '750', inner diameter 6.2 cm, 50.0 grams. **£2,000-3,000**



- 238 An Edwardian diamond and pearl fringe necklace, set with rose-cut and old-cut diamonds in cut-down collets and tulip mounts, alternating with graduated pearl drops, fastens with concealed box clasps, unmarked metal testing as silver on 14ct, overall length 40.0 cm, total weight of item 38.2 grams. **£2,000-3,000**



- 239 A mid-20th century diamond-set double clip/brooch, of scrolling design, channel-set with baguette-cut diamonds, overlaid with single and brilliant-cut diamond-set bows, approximately 11.60cts total, mounted in presumed platinum, the reverse highlighted by two collet-set circular-cut rubies, together with a fitted box by Boucheron, Paris 76, Place Vendome, New York 1 East 75th Street, 180 New Bond Street, London, dimensions 8.5cm x 4.5cm, gross weight 49.3grs **£3,000-5,000**



Fine Jewellery, Watches & Silver, 24th Oct, 2024 09:30

- 240 A modified trilliant-cut diamond ring, the diamond of 3.58ct in a claw setting, between pavé-set diamond shoulders leading to a flat shank, white metal marked '18ct', size K, 6.6 grams.
£3,000-5,000



- 241 Louis Vuitton - a Sablon handbag in red Epi leather, zipper open to reveal a red suede lining, equipped with two rolled top handles, gold-tone hardware. 27.0W x 21.0H x 11.0D cm, handle drop length 9.5 cm.
No box no dustbag no paperwork. **£400-600**



- 242 Cartier - a collection of pens; to include a Pasha de Cartier blue lacquer ballpoint pen, with pouch and box, serial number 19881175; together with a cased Must de Cartier trilogy set, to include a gold-toned ballpoint pen, numbered 526348, and a silver-toned mechanical pencil, numbered 675953. **£300-500**



- 243 Asprey - a silver 'Wafer' lighter in case, of rectangular form with engine turned decoration, pull and swivel base signed and numbered '364', London 1984, 5.5 x 3.9 x 0.8 cm, in fitted case, together with instruction card and screwdriver. **£250-350**



- 244 Montblanc - a Meisterstück Classique Ballpoint pen, with twist mechanism, cap and barrel in black resin, gold-tone hardware, and emblem inlaid in cap top. Cased with warranty certificate. Serial number: CD270282. **£150-250**



Fine Jewellery, Watches & Silver, 24th Oct, 2024 09:30

- 245 A Patek Philippe Calatrava 18 Carat Ladies Wristwatch
 Model: 4819 5
 Serial: 2871015
 Year: 1990s
 Case Material: 18 Carat Gold
 Case Diameter: 25mm
 Dial: White
 Numerals: Roman
 Movement: Patek Phillipe Quartz Cal. E 15
 Strap: 18 Carat Gold Woven
 Buckle: 18 Carat Gold Signed and Embossed Clasp
 Box: No
 Papers: No
 Gross Weight: 50.6g
 Private Collection **£1,500-2,000**



- 246 A Rolex Air King Stainless Steel Wristwatch
 Model: 14000
 Year: 1990's
 Case Material: Rolex Oystersteel
 Case Diameter: 33mm
 Dial: Champagne
 Numerals: Baton
 Movement: Automatic Cal. 3000
 Strap: Rolex Oyster Stainless Steel
 Buckle: Stainless Steel Rolex Deployant
 Box: No
 Papers: No
 Private Collection **£2,000-3,000**



- 247 A Cartier Tank Americaine 18 Carat White Gold Wristwatch
 Model: 2490
 Serial: 7790630D
 Case Material: 18 carat white gold
 Case diameter: 22.5mm
 Bezel: N/A
 Dial: White dial
 Numerals: Roman
 Movement: Automatic
 Functions: Date
 Strap: Black leather
 Buckle: Cartier 18 Carat White Gold Deployant
 Length of bracelet: 17.5cm
 Box: No, just a travel case
 Papers: No
 Please request or check the condition report. **£3,000-5,000**



Fine Jewellery, Watches & Silver, 24th Oct, 2024 09:30

- 248 A Rare IWC Schaffhausen Portugieser Perpetual Calendar 18 Carat Gold Wristwatch
 Model: IW503404
 Serial: 3997958
 Year: 2015 purchased Mar 2022
 Case Material: 18 Carat Rose Gold Brushed and Polished, Sapphire Crystal Caseback
 Case Diameter: 44.2mm
 Dial: Slate Grey Sunburst
 Numerals: Arabic
 Movement: Automatic Cal. 52615, 168h Power Reserve
 Functions: Perpetual Calendar having displays for Date, Day, Month and Year in four digits, Perpetual Moon Phase for the Northern and Southern Hemispheres
 Strap: Santoni Brown Leather, additional unworn Santoni strap present.
 Buckle: IWC 18 Carat Deployant Clasp
 Box: Yes
 Papers: Comprehensive papers and history present including; original receipt of purchase, International Limited Warranty card and papers, IWC service receipt, IWC microfibre cloth, and Perpetual Calendar instructions.
 Gross Weight: 154.7g
 Private Collection **£10,000-15,000**



- 249 An Audemars Piguet Royal Oak Offshore Chronograph
 Model: 25940SK.OO.D002CA.01
 Case No. F09961
 Year: 2000s
 Case Material: Brushed Stainless Steel
 Bezel: Rubberized
 Case diameter: 42mm
 Dial: Black Tapisserie
 Numerals: Arabic
 Movement: Automatic
 Calibre: 2226/2840
 Functions: Three Subdial Chronograph, Date Aperture
 Strap: Audemars Piguet Rubber
 Buckle: AP Signed Deployant Clasp
 Box: No
 Papers: No **£6,000-8,000**



- 250 A Patek Philippe Ladies 18 Carat and Diamond Wristwatch
 Model: 4941/2
 Serial: 4082336
 Case Material: 18 Carat Gold and Diamond
 Case Diameter: 23mm
 Dial: Mother of Pearl
 Numerals: Diamond set Dot
 Movement: Patek Philippe Quartz Cal E 15
 Strap: 18 Carat Gold Integrated Rope Link
 Buckle: Butterfly Deployant 18 Carat
 Box: Yes
 Papers: No
 Gross Weight: 76.5g
 Private Collection **£5,000-6,000**



Fine Jewellery, Watches & Silver, 24th Oct, 2024 09:30

- 251 A Rolex Daytona Cosmograph Gentleman's Wristwatch
 Model: 116523
 Case No. 8943S622
 Year: 2000s
 Case Material: Stainless Steel and 18 Carat Yellow Gold
 Bezel: 18 Carat Yellow Gold
 Case diameter: 40mm
 Dial: White
 Numerals: Diamond Inset Dot
 Movement: Automatic
 Calibre: 4130
 Functions: Three Subdial Chronograph, Tachymeter
 Strap: Rolex Oystersteel
 Buckle: Rolex Oysterlock, Personal Engraving to inside (Not visible unless viewed undone)
 Box: No
 Papers: No **£8,000-12,000**



- 252 A Rex 18 Carat Gold Ladies Wristwatch
 Serial: 711
 Case Material: 18 Carat Gold
 Case Diameter: 15mm
 Dial: Silvered
 Numerals: Arabic
 Movement: Mechanical
 Strap: Integrated Yellow Metal
 Buckle: Yellow Metal Clasp
 Box: No
 Papers: No
 Gross Weight: 30.2g
 Private Collection **£500-700**



- 253 A Rolex 9 Carat Ladies Wristwatch
 Serial: 627897
 Year: C 1930s
 Case Material: 9 Carat Gold
 Case Diameter: 26mm
 Dial: White Enamel
 Numerals: Roman
 Movement: Mechanical
 Strap: Black Leather
 Buckle: Clasp
 Box: No
 Papers: No
 Gross Weight: 18.2g
 Private Collection **£300-500**



Fine Jewellery, Watches & Silver, 24th Oct, 2024 09:30

- 254 A Royal Art Deco Diamond Set and Platinum Ladies Cocktail Watch

Year: 1920s
Case Material: Platinum
Case Diameter: 10mm
Dial: Silvered
Numerals: Arabic
Movement: Mechanical
Strap: Leather
Buckle: Clasp
Papers: No
Box: No
Private Collection
Private Collection **£300-500**



- 255 A Cartier Must de Cartier 21 Ladies Wristwatch

Model: 1340
Serial: PL84219
Year: 1996
Case Material: Stainless Steel Bi-Metal
Case Diameter: 27mm
Dial: Silvered
Numerals: Roman
Movement: Quartz
Strap: Stainless Steel Bi-Metal Integrated
Buckle: Stainless Steel Cartier Butterfly Deployant
Box: Yes
Papers: Yes
Private Collection
Private Collection **£300-500**



- 256 A Rolex Datejust Gentleman's Wristwatch

Model: 6605
Serial: 437951
Year: 1950s
Case Material: Stainless Steel
Case Diameter: 36mm
Dial: Tropical Caramel
Numerals: Baton
Movement: Automatic Cal. 1066
Functions: Date Aperture
Strap: Stainless Steel Third Party
Buckle: Stainless Steel
Box: No
Papers: No
Private Collection **£1,000-1,500**



Fine Jewellery, Watches & Silver, 24th Oct, 2024 09:30

257 A Rolex Datejust Gentleman's Wristwatch

Model: 116234
Case No. G212404
Year: 2000s
Case Material: Stainless Steel
Bezel: Fluted White Gold
Case diameter: 38mm
Dial: White
Numerals: Roman
Movement: Automatic
Calibre: 3135
Functions: Date Aperture
Strap: Stainless Steel Jubilee
Buckle: Rolex Deployant Clasp
Box: No
Papers: No **£3,000-5,000**



258 A TAG Heuer Monaco Wristwatch

Model: WW2118.FC6216
Case No. CU2747
Year: 2014
Case Material: Diamond Inset Steel
Case diameter: 37mm
Dial: Black
Numerals: Baton Diamond Inset
Movement: Automatic
Calibre: 6
Functions: Second Subdial
Strap: White Leather
Buckle: Deployant Clasp
Box: Yes
Papers: Yes **£1,500-2,000**



259 A TAG Heuer Formula 1 Chronograph

Model: CAZ101E
Case No. BRL7828
Year: 2010s
Case Material: Stainless Steel
Bezel: Stainless Steel
Case diameter: 43mm
Dial: Black
Numerals: Baton
Movement: Quartz
Calibre: N/A
Functions: Three Subdial Chronograph, Date Aperture, Tachymeter
Strap: Stainless Steel
Buckle: Deployant Clasp
Box: No
Papers: No **£350-550**



Fine Jewellery, Watches & Silver, 24th Oct, 2024 09:30

- 260 A Zenith Antique Ladies Wristwatch
 Serial: 150789
 Case Material: 14 Carat Gold, Relief Worked and with
 Diamonds Inset
 Case Diameter: 25mm
 Dial: Blue Engine Turned Enamel and White
 Numerals: Arabic
 Movement: Mechanical No. 268660 1
 Strap: 14 Carat Gold Integrated and Diamond Inset
 Buckle: 14 Carat Clasp
 Box: No
 Papers: No
 Gross Weight: 25.8g
 Private Collection **£600-800**



- 261 An Omega 9 Carat Ladies Wristwatch
 Serial: 7115694
 Year: 1982
 Case Material: 9 Carat Gold
 Case Diameter: 14mm
 Dial: Gilt
 Numerals: Baton
 Movement: Mechanical Cal. 1100
 Strap: Integrated 9 Carat Gold Mesh
 Buckle: Omega 9 Carat Clasp
 Box: Yes
 Papers: Yes
 Gross Weight: 25.1g
 Private Collection **£300-500**



- 262 A Vertex Revue 18 Carat White Gold Ladies Wristwatch
 Serial: 214/3221
 Case Material: 18 Carat White Gold Diamond Inset
 Case Diameter: 17mm
 Dial: Silvered
 Numerals: Baton
 Movement: Mechanical
 Strap: White Metal
 Buckle: 9 Carat White Metal Clasp
 Box: Yes
 Papers: No
 Gross Weight: 15.9g
 Private Collection **£200-300**



- 263 A Baume & Mercier Promesse Ladies Wristwatch
 Model: 65752
 Serial: 5688513
 Year: 2000s
 Case Material: Stainless Steel
 Case Diameter: 28mm
 Dial: Silvered Enamel
 Numerals: Baton and Roman
 Movement: Quartz
 Strap: Stainless Steel Integrated
 Buckle: Stainless Steel
 Box: No
 Papers: No
 Private Collection **£300-500**



Buyers Premium 25% + VAT. Fully illustrated catalogue at dawsonsauctions.co.uk.

Fine Jewellery, Watches & Silver, 24th Oct, 2024 09:30

264 A Cartier Panthere 18 Carat Wristwatch

Model: 887971
Serial: 000520
Year: C 1990's
Case Material: 18 Carat Yellow Gold
Case Diameter: 26mm
Dial: Silvered
Numerals: Roman
Movement: Quartz
Functions: Date Aperture
Strap: Black Leather
Buckle: Clasp
Box: No
Papers: No
Gross Weight: 42.9g
Private Collection **£1,500-2,000**



265 A Breitling Chronomat Evolution

Model: B13356
Case No. 2348369
Year: 2000s
Case Material: Stainless Steel Bi-Metal
Bezel: Unidirectional Stainless Steel
Case diameter: 43mm
Dial: Blue
Numerals: Baton
Movement: Automatic
Calibre: 7750
Functions: Three Subdial Chronograph, Date Aperture
Strap: Breitling Stainless Steel Bi-Metal
Buckle: Breitling Deployant
Box: No
Papers: No **£2,500-4,500**



266 A Rare Daniel Roth 'Small Seconds' Wristwatch

Model: 1816
Edition: No. 105
Year: Mar 1997
Case Material: 18 Carat Gold, Sapphire Crystal Caseback
Case Diameter: 30mm
Dial: Black Enamel
Numerals: Roman and Dot
Movement: Automatic
Functions: Second Aperture
Strap: Black Crocodile Grain
Buckle: 18 Carat Gold
Box: No
Papers: Yes, including Daniel Roth Club members card and warranty signed by Roth
Gross Weight: 59.7g
Private Collection
Purchased 19.05.1997, David Morris Int Ltd- New Bond Street W1Y **£6,000-8,000**



Fine Jewellery, Watches & Silver, 24th Oct, 2024 09:30

- 267 A Rolex Daytona Cosmograph Gentleman's Wristwatch
Model: 116500LN
Case No. 709W1411
Year: 2016
Case Material: Stainless Steel
Bezel: Black Ceramic
Case diameter: 40mm
Dial: Black
Numerals: Baton
Movement: Automatic
Calibre: 4130
Functions: Three Subdial Chronograph, Tachymeter
Strap: Rolex Oystersteel
Buckle: Rolex Oysterlock Deployant Clasp
Box: No
Papers: International Guarantee Card **£10,000-15,000**



- 268 An Omega De Ville Gentleman's Wristwatch
Model: 1417
Year: C 1980s
Case Material: Stainless Steel Gold Plated
Case Diameter: 25mm
Dial: Two Tone Gilt
Numerals: Dot and Arabic
Movement: Quartz
Strap: Stainless Steel Gold Plated Integrated
Buckle: Stainless Steel Gold Plated Omega Clasp
Box: Yes
Papers: No
Private Collection **£200-300**



- 269 A Breitling Emergency Gentleman's Wristwatch
Model: E56121.1
Serial: 4367
Year: Late 1990's
Case Material: Titanium
Bezel: Titanium Bi-directional
Case diameter: 43mm
Dial: Blue
Numerals: Baton and Arabic
Movement: Thermoline Superquartz
Calibre: Quartz Cal 73 ETA
Functions: Distress Beacon, Digital Display
Strap: Breitling Titanium
Buckle: Breitling Titanium Deployant
Box: No
Papers: No
Private Collection **£1,000-1,500**



Fine Jewellery, Watches & Silver, 24th Oct, 2024 09:30

- 270 A Blancpain Leman GMT
Model: 2860-1130-53B
Edition No: 501
Year: 2000's
Case Material: Steel
Case diameter: 40mm
Bezel: N/A
Dial: Black
Numerals: Arabic
Movement: Automatic
Calibre: 5L60
Functions: GMT, moon phase, date.
Strap: Brown leather
Buckle: Folding clasp
Length of bracelet: Adjustable
Box: Yes
Papers: Yes
Service: Full service 2019
Please request or check the condition report. **£3,000-5,000**



- 271 A Breitling Chronomat Gentleman's Wristwatch
Model: D130501
Serial: 11502
Year: 1998
Case Material: Stainless Steel Bi-Metal
Case diameter: 40mm
Dial: White
Numerals: Baton
Movement: Automatic
Functions: Date Aperture, Chronograph Function with Three Subdials
Strap: Stainless Steel Bi-Metal
Buckle: Breitling Deployant Clasp
Box: Yes
Papers: Yes
Private Collection **£1,000-1,500**



- 272 An Omega Gentleman's Wristwatch
Model: 14714-61-SC
Serial: 18705718
Year: 1960s
Case Material: Gold Plated Stainless Steel
Case diameter: 33mm
Dial: White
Numerals: Baton
Movement: Cal 285 Mechanical
Functions: N/A
Strap: Hirsch Crocodile
Buckle: Deployant Clasp
Box: No
Papers: No
Private Collection **£200-300**



Fine Jewellery, Watches & Silver, 24th Oct, 2024 09:30

273 An Ingersoll Art Deco 9 Carat Gold Wristwatch

Serial: 723469
 Year: 1930's Approx
 Case Material: 9 Carat Yellow Gold
 Case diameter: 22mm
 Dial: Silvered
 Numerals: Arabic
 Movement: Cal 103 Mechanical
 Functions: Small Second Hand
 Strap: 'Rotary' Lizard Black
 Buckle: Clasp
 Box: No
 Papers: No
 Gross Weight: 19.1g
 Private Collection **£200-300**



274 A Longines 9 Carat Ladies Wristwatch

Year: 1960/70s
 Case Material: 9 Carat Gold
 Case Diameter: 24mm
 Dial: Silvered
 Numerals: Arabic
 Movement: Mechanical
 Functions: Small Second Aperture
 Strap: 9 Carat Woven Gold
 Buckle: 9 Carat Gold Folding Clasp
 Box: No
 Papers: No
 Private Collection **£300-500**



275 An Omega 9 Carat Ladies Wristwatch

Year: 1970s
 Case Material: 9 Carat Gold
 Case Diameter: 18mm
 Dial: Silvered
 Numerals: Baton
 Movement: Mechanical
 Strap: 9 Carat Woven Gold
 Buckle: 9 Carat Folding Clasp
 Box: Yes
 Papers: Yes
 Private Collection **£300-500**



276 An Omega Constellation Gentleman's Wristwatch

Model: 168.005
 Serial: 24421296
 Year: 1960s
 Case Material: Stainless Steel Gold Plated
 Case Diameter: 33mm
 Dial: Gilt
 Numerals: Baton
 Movement: Mechanical Cal. 561
 Functions: Date Aperture
 Strap: Leather
 Buckle: Clasp
 Box: No
 Papers: No
 Private Collection **£300-500**



Buyers Premium 25% + VAT. Fully illustrated catalogue at dawsonsauctions.co.uk.

Fine Jewellery, Watches & Silver, 24th Oct, 2024 09:30

277 An Omega 9 Carat Gentleman's Wristwatch

Model: 793571
Serial: 15220585 13308
Year: 1950s
Case Material: 9 Carat Gold
Case Diameter: 33mm
Dial: Silvered
Numerals: Baton and Arabic
Movement: Mechanical Cal 501
Strap: 9 Carat Gold Woven
Buckle: 9 Carat Gold
Box: Yes
Papers: Yes
Gross Weight: 61.1g
Private Collection **£500-700**



278 An Omega 2257 with a Swiss-made mechanical movement 30T2SC in a steel case measuring 32mm with a silver/cream dial on a generic steel strap. **£200-300**



279 An Omega mechanical watch in 9ct gold, featuring a Swiss-made mechanical movement in a 9ct gold case measuring 33mm with an engraved case back on a generic elasticated strap **£200-300**



280 A TAG Heuer Carrera Chronograph Wristwatch

Model: CV2A1U.BA0783
Serial: WPJ3057
Year: 2018
Case Material: Stainless Steel
Case diameter: 44mm
Dial: Charcoal Sunburst
Numerals: Arabic
Movement: Calibre 16 Automatic
Functions: Day Date Aperture, Chronograph Function with Three Subdials
Strap: Stainless Steel
Buckle: TAG Heuer Deployant Clasp
Box: Yes
Papers: Yes Including Original Reciept
Private Collection **£1,500-2,000**



Fine Jewellery, Watches & Silver, 24th Oct, 2024 09:30

- 281 A Bueche Girod 9 Carat White Gold Cocktail Watch
 Serial: 59-21
 Case Material: 9 Carat White Gold
 Case diameter: 12mm
 Dial: Silvered
 Numerals: Baton
 Movement: Cal 67 Mechanical
 Strap: Integrated 9 Carat White Gold
 Buckle: 9 Carat White Gold Clasp
 Box: No
 Papers: No
 Gross Weight: 25.1g
 Private Collection **£300-500**



- 282 An 18 Carat Gold Gentleman's Wristwatch
 Model: 2433
 Serial: 2339
 Year: 1950s/60s
 Case Material: 18 Carat Yellow Gold
 Case diameter: 33mm
 Dial: White
 Numerals: Baton and Arabic
 Movement: Mechanical Unsigned
 Strap: Third Party Rolled Gold Flexible
 Buckle: N/A
 Box: No
 Papers: No
 Gross Weight: 54.6g
 Private Collection **£200-300**



- 283 A Cartier Panthere 18 Carat Wristwatch
 Model: 887968
 Serial: 001089
 Year: 2000s
 Case Material: 18 Carat Gold
 Case diameter: 28mm
 Dial: Champagne
 Numerals: Roman
 Movement: Quartz
 Functions: Date Aperture
 Strap: 18 Carat Gold Bracelet
 Buckle: 18 Carat Cartier Butterfly Deployant
 Box: Cartier Box, Likely Unassociated
 Papers: No
 Gross Weight: 102.9g
 Private Collection **£4,000-5,000**



Fine Jewellery, Watches & Silver, 24th Oct, 2024 09:30

- 284 A Favre-Leuba Gentleman's Wristwatch
Model: 11043
Serial: 465
Year: 1970s
Case Material: Stainless Steel
Case Diameter: 40mm
Dial: Blue
Numerals: Baton
Movement: Girard-Perregaux 32768hz Quartz
Functions: Date Aperture
Strap: Stainless Steel Integrated
Buckle: Stainless Steel
Box: Yes
Papers: Yes
Private Collection **£200-300**



- 285 Marvin Revue wristwatch
Serial Number: 08495
Case Material: 9k Yellow Gold
Case diameter: 21mm
Dial: Gilt
Numerals: Baton
Movement: Mechanical
Strap: Integrated 9k Yellow Gold
Buckle: 9k Yellow Gold Clasp
Box: Yes
Papers: No
Gross Weight: 37.9g
Private Collection **£500-700**



- 286 A Gubelin 18 Carat White Gold Cocktail Watch
Case Material: 18 Carat White Gold with Diamond Set
Crescent Lugs
Case Diameter: 14mm
Dial: Silvered
Numerals: Baton
Movement: Mechanical
Strap: Integrated 18 Carat White Gold
Buckle: 18 Carat White Gold Deployant Clasp
Box: No
Papers: No
Gross Weight: 19.7g
Private Collection **£300-500**



- 287 A 14 Carat Gold Ladies Pocketwatch
Serial: 55675
Case Material: 14 Carat Gold Hallmarked to Case and Inner
Dust Cover
Case: Having Intricate Engraving and Flower Design
Throughout.
Case Diameter: 34mm
Dial: White
Numerals: Roman
Movement: Keyless Winding Unsigned
Box: Yes
Gross Weight: 30.9g
Private Collection **£300-500**



Fine Jewellery, Watches & Silver, 24th Oct, 2024 09:30

- 288 A Charles Frodsham Open Faced Pocket Watch
Serial: 8447
Case Material: Yellow Metal
Case Diameter: 60mm
Dial: Gilt with Engine Turned Decoration
Numerals: Roman
Movement: Key Winding Signed and Numbered 08339
Box: No
Papers: No
Gross Weight: 105g
Private Collection **£1,500-2,000**



- 289 An early 20th-century Waltham crown wind pocket watch, the gold warranted gold plated open face case with simple loop suspension, the white enamel Roman dial with a secondary dial at 6. o'clock. Fitted with a 9ct rose gold curb link double Albert fob chain with single "T" bar and yellow metal and hardstone revolving intaglio fob seal, the matrix with a long dog to one face and a running hare to the other, accompanied by a silver snap top match safe of flask form. 15.2 grams of weighable gold, excluding fob seal., 35 cm length of chain, clip to clip. **£300-500**



- 290 George Bourn of London, A George III silver pair cased fusee pocket watch numbered 17558, the case and inner case bearing corresponding hallmarks for London 1788, with engraved back plate and pierced decorative cock plate fitted a Thompson type regulating dial, the slightly convex Roman dial with blued beetle and poker hands.
George Bourn is recorded as reporting a lost watch in 1759, see page 89 of Watchmakers and Clockmakers Of The World, (21st Century Edition) Loomes, Brian.
Credit Brian Loomes **£200-300**



- 291 An uncased Swiss chiming Grand Sonnerie (?) fob watch movement the jewelled movement marked "Clock Watch" The white enamel Roman dial marked for the retailers, Dyson & Sons, Leeds and with a secondary dial at 6. o'clock, 42 mm diameter x 7 mm depth of movement. **£300-400**



- 292 L. Recordon (Late Emery) of London a keywound gentleman's fusee pocket watch numbered 4002 in a later case, the movement with jewelled and pierced cock plate and regulating dial. The slightly convex Arabic dial. together with a lady's continental silver and guilloche enamel nuses type fob watch and one other.
Louis Recordon, is recorded as working in Soho, London between 1778-1824, see Watchmakers and Clockmakers Of The World, (21st Century Edition) page 644 Loomes, Brian.
£200-300



Fine Jewellery, Watches & Silver, 24th Oct, 2024 09:30

- 293 Cartier - A Faux Tortoise Shell Quartz Alarm Clock
Model: 7531
Serial: 08320
Case Material: Enameled Stainless Steel
Case Diameter: 140x80mm
Dial: White Signed Cartier
Numerals: Roman
Functions: Date Aperture
Private Collection **£200-300**



- 294 A three-piece silver tea service, of round bulbous form with gadrooned borders, each piece standing on four shell and scroll feet, the teapot with ebonised knob and handle, engraved "P", and presentation inscription "Presented to William George Smith....1898-1946", Sheffield 1945, Walker and Hall, 36.4ozt gross. **£400-600**



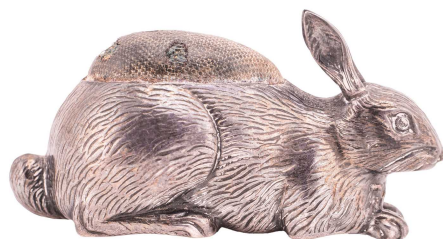
- 295 A silver teapot, a pair of silver butter dishes, and a set of seven silver teaspoons, the boat-shaped teapot with gadrooned border, ebonised knob and handle, standing on four feet, London 1934, the Mappin & Webb butter dishes with cut glass liners and a pair of butter knives in fitted case, and the set of seven Walker & Hall teaspoons cast with crossed golf clubs and a golf ball in associated fitted case, 27.7ozt gross. **£300-500**



- 296 A William IV four-piece silver tea service, the teapot and coffee pot with bird and flower cast finials, the bark handles with ivory insulators, with overall chased decoration with large flower scrolls, each with wooden filled teapot stands, the sugar bowl and milk jug with entwined bark rims similarly decorated with gilt interiors, each piece engraved with a family crest, by John Wilmin Figg, composite date, 76.1ozt excluding the teapot stands.
Ivory certification reference YXR3NFIU9 **£1,400-1,800**



- 297 Adie & Lovekin Ltd; an Edwardian silver rabbit pin cushion, in the form of a crouching rabbit, Birmingham 1907, 5.5cm wide, 26grams gross. **£400-600**



Fine Jewellery, Watches & Silver, 24th Oct, 2024 09:30

- 298 A silver entree dish, cover and handle, of rectangular form with dragooned borders, the weighted bayonet handle in the form of a wheat sheaf, the cover inscribed " In testimony of the esteem and gratitude for his unwearied and important services Chairman.....1829" and engraved with a coat of arms, the base inscribed "J Widdowson Fecit London", 29cm x 21cm, London 1828 and 1829, Joseph Craddock, the bayonet handle apparently unmarked, 49ozt. **£1,200-1,800**



- 299 A silver tea caddy and three spoons, the square tea caddy with pull-off cover decorated with putti in a landscape, 10cm high, import marks 1978, together with a matched set of three silver fiddle pattern spoons each engraved with a monogram, 11ozt gross. **£200-300**



- 300 A Victorian silver four-piece tea and coffee set by John Lowe, decorated with etched scrolling leaf and floral decoration, presentation inscription to the teapot and monogram to the other pieces, Chester mixed dates, together with associated silver sugar nips, 68ozt gross (5). Ivory certification reference RFZXR3CH **£400-600**



- 301 A George III silver tankard, of baluster form with hinged domed cover, later decorated with C scrolls, flowers and a vacant cartouche, 19cm high, London 1768, 21.5ozt. **£600-800**



Fine Jewellery, Watches & Silver, 24th Oct, 2024 09:30

- 302 A harlequin silver three-piece tea set, of boat form with half reeded decoration, the teapot with wooden knob and handle, inscribed " Presented to Mrs James Hecksher from her husbands friends in the press gallery of the Houses of Parliament on his retirement after 47 years associated with it in grateful recognition of many services rendered to its members July 1905", 33.5ozt.

James Hecksher was born in Hamberg 1834. Aged 22 he moved to London and was considered one of Paul Julius Reuters finest journalists. During his distinguished career, he assisted in bringing the breaking news of Abraham Lincoln's assassination to Reuters London, was the founder of the British Press Club and was head of the parliamentary journalists section. **£400-600**



- 303 A pair of Victorian silver candlesticks, of shaped hexagonal form each with detachable scones, the flared weighted bases engraved with two family crests, 24cm high, Sheffield 1841, (2). **£250-350**



- 304 A Georg Jensen "Sterling" bowl designed by Harold Nielson as part of the Pyramid Collection, numbered 636, of oval form with two stylised flared and berry handles, post-1945 marks, the bowl is 29cm x 21.4cm, 42.3ozt. **£2,000-3,000**



- 305 An Irish silver two-handed tray, with a gadrooned border engraved with a band of fruiting vine leaves and a coat of arms, on four half-reeded feet, hallmarked Dublin 1809, James le Bas and again Dublin 1810, handle to handle 76cm x 45cm wide, **£3,500-4,500**



Fine Jewellery, Watches & Silver, 24th Oct, 2024 09:30

- 306 Garrard & Co Ltd: a silver four-piece tea set together with an unassociated set of George III silver sugar tongs, the teapot and hot water jug with simulated wooden knop and handle, Sheffield 1958, 52.4ozt gross. **£600-800**



- 307 A silver bowl of round form, the pierced and cast border decorated with a gadrooned and shell rim and flowering garlands on a flared foot, 25cm diameter, London 1927, Mappin and Webb, 19.1ozt. **£200-300**



- 308 A Belgium late 18th century silver coffee pot; Neo Classical style, low-bellied fluted body with matte leaf engraved border and chased foliate roundels to lower body.; the domed, hinged fluted cover with cast foliate finial and wooden knob, the cover secured with a pull-out pin to hinge; leaf-mounted covered spout and angled ebonised carved handle; on three leaf-mounted stepped bracket feet. 38cm high, 30.6ozt gross. **£300-500**



- 309 A George III silver vinaigrette with pierced gilt grill and interior together with a Chinese white metal pin tray decorated with dragoons and an oval silver box with engine-turned decoration to the hinged cover engraved "D", opening to reveal a fabric and leather lined interior on four paw feet, 9.4ozt gross. **£250-350**



- 310 A silver fruit bowl, of oval form the pierced and cast border decorated with scrolling fruiting vine leaves, on a flared foot, 32cm x 18cm, Sheffield 1947, Frank Cobb & Co Ltd, 20.5ozt. **£200-300**



Fine Jewellery, Watches & Silver, 24th Oct, 2024 09:30

- 311 A silver and tortoiseshell trinket box and a French agate snuff box, the trinket box of shaped rectangular form with a pique urn and swags to the hinged cover, on four ribbon bow feet, Birmingham 1905, 9.75cm wide, and the rectangular snuffbox with French import marks to the white metal mounts, 7cm wide (2). **£200-300**



- 312 C J Vander Ltd; a pair of silver candlesticks, cast in 18th century style, 16cm high, London 1968, 32.3ozt. **£400-600**



- 313 An American "Sterling" shaped rectangular dish, the wide border decorated with repousse and chased flower heads, the base engraved with a monogram, 33cm x 24.5cm, 16.8ozt. **£200-300**



- 314 An American "Sterling" bowl by The Loring Andrews, of flared form profusely decorated with scrolling leaves, birds and scenes, 17cm high, stamped marks, 15.6ozt. **£250-350**



- 315 A silver salver and a silver trinket box, the shaped square silver salver on four scroll feet, 19cm x 19cm, Sheffield 1947, Viner's Ltd (Emile Viner), and the shaped rectangular trinket box with hinged cover opening to reveal a silk and leather interior, standing on four paw feet, Birmingham 1911, Mappin and Webb, 11.6ozt weighable silver. (2). **£200-300**



Fine Jewellery, Watches & Silver, 24th Oct, 2024 09:30

- 316 A pair of American Sterling candlesticks by Gorham, with flared weighted bases, each with detachable scones, decorated with scrolling flowers and engraved with a family crest, 31cm high **£400-600**



- 317 A George III silver fruit basket, of pierced oval form with beaded borders, bright cut decoration and engraved family crest, 36.5cm x 26cm, London 1780, 22.3ozt. **£300-500**



- 318 A Jersey silver milk jug and a pair of Victorian Neo-Classical candlesticks, the milk jug of typical form with rattan-covered handle, Birmingham 1906, 14cm high, 6.1ozt, the candlesticks with weighted bases and detachable scones, 19.5cm high, (3). **£200-300**



- 319 A matched silver chocolate pot and coffee pot, each with simulated wooden side handles and hinged domed covers, the chocolate pot London 1918, the coffee pot by William Comyns & Sons, London 1913, 39.5ozt gross, (2). **£400-600**



- 320 A set of three Hungarian 800 standard serving platters, each with stylised flowerhead and scroll cast borders, comprising a pair of elongated oval platters 66cm x 27.5cm and an oval platter 51cm x 33cm, 161ozt, (3). **£1,000-1,500**



Fine Jewellery, Watches & Silver, 24th Oct, 2024 09:30

- 321 Tim Nicklin (20th century) Kenyan, a limited edition large cast silver model of a Secretary Bird, signed and dated 1988, numbered 4/10, 'PBA' makers mark to right hand side, on a naturalistic rocky base, the whole mounted to a wooden stand, 32.5 cm high x 31 cm wide. **£1,200-1,500**



- 322 Hunt & Roskell (late Storr & Mortimer) a pair of finely cast silver gilt figural table comports, London 1859 by Hunt & Roskell, No9820,, each with a spreading bough with hanging grapes above a lady and gentleman one gathering fruit the other skating on a pond, from the series symbolic of the four seasons, both on a moulded tripartite lobed base with fruit and vines, bearing a dated inscription for 1931, 112 oz combined 29 cm overall height, **£1,500-2,000**



- 323 A German white metal oil lamp base, the pierced reservoir supported by two entwined putti and a dolphin, the lobed flared base decorated with scrolling foliage around three cartouches, one engraved with a monogram, with masks below, on scroll feet, 30cm high, stamped 800, 21 oz gross. **£500-700**



- 324 A George II silver tea caddy; inverted baluster form on an oval foot; the domed pull-off cover with cast artichoke finial. The body chased with rocaille scrolls and burgeoning foliage around vacant scroll cartouches. Marked to base, the lid unmarked. London 1746 by Samuel Taylor. 13cm high. 10.3 oz **£400-600**



- 325 A London silver, laceback trifid spoon, London, marks rubbed, 17th century, initialed S.B. and R.B. scroll decorated terminal and bowl, 1.3 oz, 19 cm long, **£300-500**



Fine Jewellery, Watches & Silver, 24th Oct, 2024 09:30

- 326 A George III silver teapot, of oval form with wooden knop and handle, decorated with bright-cut bands and with a monogram in leaf cartouche to one side, and a family coat of arms in leaf cartouche to the other, London 1797, by Henry Chawner & John Eames, 12.6ozt. **£250-350**



- 327 An Indian white metal pedestal bowl, profusely decorated with figures in traditional Indian village landscape, on a domed foot, 20cm diameter, stamped Grish Chunder Dutt, Bhowanipore, Calcutta, 21ozt. **£300-500**



- 328 An Edwardian silver-mounted claret ewer, Birmingham 1904 probably by Adie Bros, the hinged cover with pierced thumb piece, shaped spout and harp handle, the body with a diaper cut collar and writhen conical base, 15 cm wide x 27 cm **£200-300**



- 329 An octagonal swing handled cake basket, with an elongated beaded border to sides and handle, fan-pierced sides and on four scrolling bracket feet, Sheffield 1917 by Harrison and Howson 21.5 cm diameter; together with a late Victorian lighthouse sugar caster with screw-off cover, profusely chased with scrolls and foliage, London 1894 by Horace Woodward & Co Ltd 15.5 cm high, and another sugar caster of vase form, weighted to base Sheffield 1912 by Roberts and Belk. 21ozt weighable **£300-500**



- 330 A bachelor teapot and matching sugar basin; circular with a reeded band to the girdle, on four shell mounted pad feet, with fruitwood handle and wooden knop finial, Birmingham 1919 by Joseph Gloster Limited; together with an Irish silver strawberry set, circular with Celtic borders Dublin 1918 and 1929, by Edmund Johnson. Gross weight 20.7ozt **£300-500**

