

## The Contents of a Chelsea Mansion, Thu, 13 January 2022 10:00

- 1 An Edwardian style scroll back easy chair with stuff over upholstery, with loose saving covers and matching scatter cushion. 92cm wide x 90cm high x 97cm deep. Height of seat: 48cm.  
*Provenance: The contents of a Chelsea Mansion furnished by Nicky Haslam and Collette van den Thillart.*  
*Further information on the Dawsons [website article here](#) £100-200*



- 2 A matching fabric covered 'L' shaped open bookcase. 97cm wide x 97cm long x 93cm high.  
*Provenance: The contents of a Chelsea Mansion furnished by Nicky Haslam and Collette van den Thillart.*  
*Further information on the Dawsons website article here £80-120*



- 3 A two section deep button upholstered Chesterfield type sofas together with a matching cube footstool. The larger sofa: 200cm long x 105cm deep x 90cm high.  
*Provenance: The contents of a Chelsea Mansion furnished by Nicky Haslam and Collette van den Thillart.*  
*Further information on the Dawsons website article here £200-300*



- 4 A 20th century Neo-Classical style X frame wrought iron coffee table with rouge marble top. 71cm long x 47cm wide x 50cm high.  
*Provenance: The contents of a Chelsea Mansion furnished by Nicky Haslam and Collette van den Thillart.*  
*Further information on the Dawsons website article here £100-200*



- 5 A decorative 20th century toleware lamp of oval section painted with cut blooms with ruffled green fabric shade. 74cm high  
*Provenance: The contents of a Chelsea Mansion furnished by Nicky Haslam and Collette van den Thillart.*  
*Further information on the Dawsons website article here £50-80*



## The Contents of a Chelsea Mansion, Thu, 13 January 2022 10:00

- 6 A set of four decorative square scatter cushions, together with a triangular velour scatter cushion. (5). Square cushions: 50cm x 50cm.

*Provenance: The contents of a Chelsea Mansion furnished by Nicky Haslam and Collette van den Thillart.*

*Further information on the Dawsons website article here* **£50-80**



- 7 A Chinese Chippendale style painted and distressed open bookcase with blind fretwork chinoiserie. 140cm long x 36cm deep x 109cm high.

*Provenance: The contents of a Chelsea Mansion furnished by Nicky Haslam and Collette van den Thillart.*

*Further information on the Dawsons website article here* **£200-300**



- 8 A pair of estate style ebonised and distressed open bookshelves with numbered adjustable shelves. (2) 126cm wide x 205cm high x 24cm deep.

*Provenance: The contents of a Chelsea Mansion furnished by Nicky Haslam and Collette van den Thillart.*

*Further information on the Dawsons website article here* **£300-500**



- 9 An early 19th century English porcelain dessert service, probably Coalport, with apple green ground, painted with cornflowers and poppies, possibly Flight, Barr and Barr. (22 pieces). Provenance: Christies, 13th April 2006, Lot 562

*Provenance: The contents of a Chelsea Mansion furnished by Nicky Haslam and Collette van den Thillart.*

*Further information on the Dawsons website article here* **£100-150**



- 10 A pair of floral chintz upholstered serpentine topped single headboards, together with matching valences. (4) Headboards: 94cm wide x 117cm high.

*Provenance: The contents of a Chelsea Mansion furnished by Nicky Haslam and Collette van den Thillart.*

*Further information on the Dawsons website article here* **£150-250**





## The Contents of a Chelsea Mansion, Thu, 13 January 2022 10:00

- 11 An early 20th century Continental porcelain figure of the Malabar Musician fashioned as a lamp with ruffled shade on gilt metal base. 53cm high.
- Provenance: The contents of a Chelsea Mansion furnished by Nicky Haslam and Collette van den Thillart.*  
*Further information on the Dawsons website article here* **£80-120**
- 12 A pair of French faux oil porcelain table lamps, fitted for electricity with rise and fall pleated shades, together with another Oriental style porcelain table lamp. (3) Tallest: 59cm high.
- Provenance: The contents of a Chelsea Mansion furnished by Nicky Haslam and Collette van den Thillart.*  
*Further information on the Dawsons website article here* **£100-150**
- 13 A George I style red chinoiserie lacquered boudoir table with single frieze drawer on slender cabriole legs. Together with a painted French tray topped tambour fronted night cupboard. (2) The boudoir table: 46cm long x 32cm wide x 70cm high.
- Provenance: The contents of a Chelsea Mansion furnished by Nicky Haslam and Collette van den Thillart.*  
*Further information on the Dawsons website article here* **£150-250**
- 14 A 19th century painted and simulated pine chest of three drawers with Gothic tracery, on shaped splay feet. 90cm long x 44cm wide x 91cm high.
- Provenance: The contents of a Chelsea Mansion furnished by Nicky Haslam and Collette van den Thillart.*  
*Further information on the Dawsons website article here* **£200-300**
- 15 An French style deep button upholstered Duchesse with pleated fabric valence and two scatter cushions. 157cm long x 73cm wide x 87cm high.
- Provenance: The contents of a Chelsea Mansion furnished by Nicky Haslam and Collette van den Thillart.*  
*Further information on the Dawsons website article here* **£150-250**



## The Contents of a Chelsea Mansion, Thu, 13 January 2022 10:00

- 16 A pair of gilt brass and distressed mirror plate two-tier etageres with reeded column supports, in the style of Maison Jansen. 40cm deep x 46 long x 62cm high.

*Provenance: The contents of a Chelsea Mansion furnished by Nicky Haslam and Collette van den Thillart.*  
Further information on the Dawsons website article here **£150-250**



- 17 A pair of Ironstone style 'Chinese Rose' decorated baluster pottery table lamps, with pleated chintz fabric shades. (2) 63cm high.

*Provenance: The contents of a Chelsea Mansion furnished by Nicky Haslam and Collette van den Thillart.*  
Further information on the Dawsons website article here **£80-120**



- 18 A floral chintz upholstered serpentine topped double headboard, together with matching valence. (2) Headboard 163cm high x 132cm high.

*Provenance: The contents of a Chelsea Mansion furnished by Nicky Haslam and Collette van den Thillart.*  
Further information on the Dawsons website article here **£150-250**



- 19 A green and floral painted George I style foot stool with chintz stuff over upholstery and shell carved frieze. 62cm long x 56cm wide x 43cm high.

*Provenance: The contents of a Chelsea Mansion furnished by Nicky Haslam and Collette van den Thillart.*  
Further information on the Dawsons website article here **£100-150**



- 20 A 20th century stained oak club fender with moulded seat and architectural supports. Aperture: 59cm. Overall length: 95cm long x 38cm deep x 38cm high.

*Provenance: The contents of a Chelsea Mansion furnished by Nicky Haslam and Collette van den Thillart.*  
Further information on the Dawsons website article here **£100-200**





## The Contents of a Chelsea Mansion, Thu, 13 January 2022 10:00

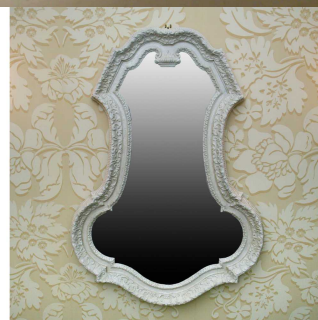
- 21 A Victorian polished steel and brass folding spark guard together with a Georgian brushed steel serpentine fire curb. The spark guard open: 67cm long x 50cm high.

*Provenance: The contents of a Chelsea Mansion furnished by Nicky Haslam and Collette van den Thillart.*  
Further information on the Dawsons website article here **£100-200**



- 22 A French early 19th century carved wood and painted gesso shaped wall mirror of 'keyhole' form. 77cm wide x 108cm high.

*Provenance: The contents of a Chelsea Mansion furnished by Nicky Haslam and Collette van den Thillart.*  
Further information on the Dawsons website article here **£300-500**



- 23 A floral chintz upholstered crow stepped double headboard, together with matching valence. (2) Headboard 154cm high x 140cm high.

*Provenance: The contents of a Chelsea Mansion furnished by Nicky Haslam and Collette van den Thillart.*  
Further information on the Dawsons website article here **£150-250**



- 24 A 19th-century French tin-glazed porcelain dessert service hand-painted with fruits and flowers. (11) Provenance: Christie's, 13th April 2006, Sale # 4081, Lot 561

*Provenance: The contents of a Chelsea Mansion furnished by Nicky Haslam and Collette van den Thillart.*  
Further information on the Dawsons website article here **£150-250**



- 25 An early 19th century British ebonised and simulated inlaid mule chest, with two short drawers flanked by a pair of fluted pilasters on shaped bracket supports. 96cm wide x 59cm deep x 71cm high.

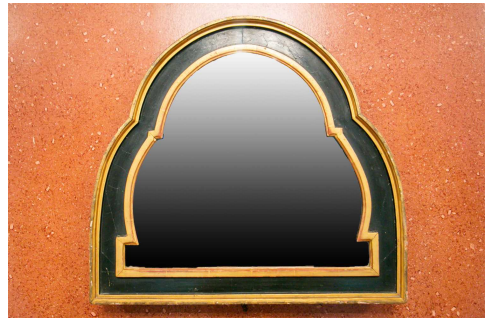
*Provenance: The contents of a Chelsea Mansion furnished by Nicky Haslam and Collette van den Thillart.*  
Further information on the Dawsons website article here **£200-300**



## The Contents of a Chelsea Mansion, Thu, 13 January 2022 10:00

- 26 A 19th century continental ebonised and parcel gilt arched easel mirror. 57cm wide x 53cm high.

*Provenance: The contents of a Chelsea Mansion furnished by Nicky Haslam and Collette van den Thillart.*  
Further information on the Dawsons website article here **£100-150**



- 27 A pair of Edwardian style scroll back easy armchairs with stuff over upholstery and loose saving covers. One bordered in khaki and the other in chocolate brown.

*Provenance: The contents of a Chelsea Mansion furnished by Nicky Haslam and Collette van den Thillart.*  
Further information on the Dawsons website article here **£200-300**



- 28 A set of ten early 19th century still plate engravings depicting characters from theatrical tragedies such as the Habit of Perdita in the Comedy of the Winter's Tale. All decoratively framed and glazed (10). Prints size: 24cm x 19cm.

*Provenance: The contents of a Chelsea Mansion furnished by Nicky Haslam and Collette van den Thillart.*  
Further information on the Dawsons website article here **£100-150**



- 29 A pair of decorative painted metal classical column table lamps on square section bases, together with a brass three branch faux candle lamp, all with pleated fabric shades. (3). The column lamps: 60cm high.

*Provenance: The contents of a Chelsea Mansion furnished by Nicky Haslam and Collette van den Thillart.*  
Further information on the Dawsons website article here **£100-150**



- 30 A French 19th century, cream painted oak console table with moulded frieze drawer on harebell cabriole legs united by an underteir on scroll feet. 80cm wide x 41cm deep x 87cm high.

*Provenance: The contents of a Chelsea Mansion furnished by Nicky Haslam and Collette van den Thillart.*  
Further information on the Dawsons website article here **£200-300**





## The Contents of a Chelsea Mansion, Thu, 13 January 2022 10:00

- 31 A pair of Edwardian style scroll back slipper chairs on square tapering supports. (2) 64cm wide x 70cm deep x 76cm high.

*Provenance: The contents of a Chelsea Mansion furnished by Nicky Haslam and Collette van den Thillart.*  
Further information on the Dawsons website article here **£150-250**



- 32 An early 20th century English school landscape of a large country house on a distant hill with figures, trees and animals in the foreground. Oil on board, framed. Overall: 57cm x 68cm.

*Provenance: The contents of a Chelsea Mansion furnished by Nicky Haslam and Collette van den Thillart.*  
Further information on the Dawsons website article here **£100-150**



- 33 After William Hincks (1752-1797), 'To the King's Most Excellent Majesty, This Plate of The Increasing Grandeur of The British Nation' dated June 1780, steel plate engraving. Together with 'View of the Fountain of Corinthe' and 'View of the Temple of Corinthe' both after Merry-Joseph Blondel (1781-1853), circa 1820s. (3) All framed and glazed, the Hincks print: 59.5cm x 70.5cm.

*Provenance: The contents of a Chelsea Mansion furnished by Nicky Haslam and Collette van den Thillart.*  
Further information on the Dawsons website article here **£100-150**



- 34 A set of three early 19th century botanical hand-tinted engravings, depicting 'Veronica arvensis', 'Veronica serpyllifolia', and 'Veronica Chamoedrys', each decoratively framed and glazed. (3) Each: 56cm x 46.5cm.

*Provenance: The contents of a Chelsea Mansion furnished by Nicky Haslam and Collette van den Thillart.*  
Further information on the Dawsons website article here **£80-120**



- 35 A collection of decorative ceramics to include a pair of Gien faïence table candlesticks, a pair of 18th century style delft vases, a pair Leighton pottery 'Chinese Rose' baluster vases and covers and an Art Deco style ceramic vase. (7) The Leighton vases: 38cm high.

*Provenance: The contents of a Chelsea Mansion furnished by Nicky Haslam and Collette van den Thillart.*  
Further information on the Dawsons website article here **£100-200**



## The Contents of a Chelsea Mansion, Thu, 13 January 2022 10:00

- 36 An early 20th century Arts & Crafts design oak two tiered buffet, with stop chamfered columns on swivel castors. 99cm long x 47cm wide x 96cm high.
- Provenance: The contents of a Chelsea Mansion furnished by Nicky Haslam and Collette van den Thillart.*  
*Further information on the Dawsons website article here* **£150-250**



- 37 A late Victorian oak 'horseshoe' backed tub chair with stuff over upholstery on square tapering supports with swivel castors. 68cm wide x 80cm high.
- Provenance: The contents of a Chelsea Mansion furnished by Nicky Haslam and Collette van den Thillart.*  
*Further information on the Dawsons website article here* **£100-150**



- 38 A Victorian patinated bronze architectural table lamp with cluster column support and a niched base on a stepped foot, together with pleated fabric shade. 81cm high.
- Provenance: The contents of a Chelsea Mansion furnished by Nicky Haslam and Collette van den Thillart.*  
*Further information on the Dawsons website article here* **£200-300**



- 39 A Victorian oak gothic Puginesque 'X' frame trestle type side table with sledge feet. 87cm wide x 52cm deep x 81cm high.
- Provenance: The contents of a Chelsea Mansion furnished by Nicky Haslam and Collette van den Thillart.*  
*Further information on the Dawsons website article here* **£150-250**



- 40 A sage painted 19th century style triple ladder back hall settle, with open arms, rush seat on spindle supports. 162cm long x 58cm deep x 90cm high.
- Provenance: The contents of a Chelsea Mansion furnished by Nicky Haslam and Collette van den Thillart.*  
*Further information on the Dawsons website article here* **£200-300**





## The Contents of a Chelsea Mansion, Thu, 13 January 2022 10:00

- 41 A 20th century celadon green painted oak hall bench on six turned supports. 245cm long x 39.5cm deep x 53cm high.

*Provenance: The contents of a Chelsea Mansion furnished by Nicky Haslam and Collette van den Thillart.*  
Further information on the Dawsons website article here **£150-250**



- 42 Boris A. Mikhailov (Russian, 20th century) 'Walking on Water' surreal oil canvas,, the reverse signed, titled and dated 2001, in a gilt moulded frame. 80cm x 95cm.

*Provenance: The contents of a Chelsea Mansion furnished by Nicky Haslam and Collette van den Thillart.*  
Further information on the Dawsons website article here **£300-500**



- 43 An early 20th century ebonised sideboard with a plain frieze and brushing slides and nine flat section cabriole supports on a sub-base. 225cm long x 61cm deep x 81cm high.

*Provenance: The contents of a Chelsea Mansion furnished by Nicky Haslam and Collette van den Thillart.*  
Further information on the Dawsons website article here **£300-500**



- 44 A 20th century European school, portrait study of a gentleman in a cloistered interior, oil on canvas in an ivory-coloured composition frame. Overall: 79cm x 65cm.

*Provenance: The contents of a Chelsea Mansion furnished by Nicky Haslam and Collette van den Thillart.*  
Further information on the Dawsons website article here **£100-200**



- 45 A pair of late Victorian mahogany glazed storm lamp holders or wall lanterns, with shaped backboards. (2) 26cm wide x 26cm deep x 56cm high, approx.

*Provenance: The contents of a Chelsea Mansion furnished by Nicky Haslam and Collette van den Thillart.*  
Further information on the Dawsons website article here **£200-300**

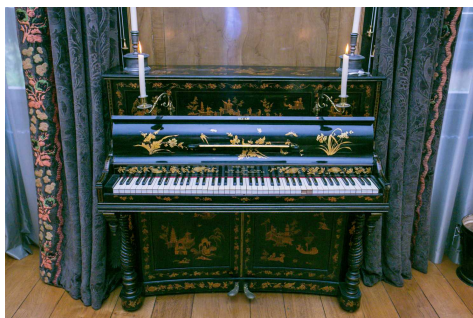


## The Contents of a Chelsea Mansion, Thu, 13 January 2022 10:00

- 46 A late 19th century French black chinoiserie lacquered upright pianoforte by Roz of Paris, on twisted baluster column supports with gilt brass candle sconces and folding carry handles. 126cm long x 56cm deep x 121cm high.

*Provenance: The contents of a Chelsea Mansion furnished by Nicky Haslam and Collette van den Thillart.*

*Further information on the Dawsons website article here* **£800-1,200**



- 47 A pair of French 19th century slate topped mahogany apothecary cupboards, each with five annotated faux drawer fronts. (2) 52cm long x 30cm deep x 92cm high.

*Provenance: The contents of a Chelsea Mansion furnished by Nicky Haslam and Collette van den Thillart.*

*Further information on the Dawsons website article here* **£300-500**



- 48 A contemporary chromium plate Moët & Chandon branded twin champagne bucket together a pair of silver plated woven metal waste paper baskets. (3) The champagne bucket: 36cm wide x 26cm high.

*Provenance: The contents of a Chelsea Mansion furnished by Nicky Haslam and Collette van den Thillart.*

*Further information on the Dawsons website article here* **£150-250**



- 49 A set of four Louis XVI style, 19th century carved and painted cameo backed side chairs with split cane panel back and seat on turned and fluted supports. (4) 45cm wide x 45cm deep x 85cm high.

*Provenance: The contents of a Chelsea Mansion furnished by Nicky Haslam and Collette van den Thillart.*

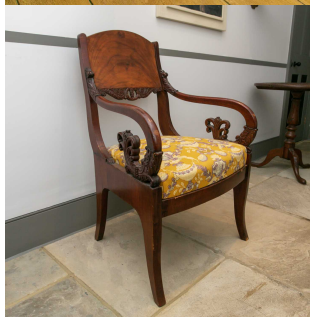
*Further information on the Dawsons website article here* **£300-500**



- 50 A 19th century Russian figured mahogany open armchair with carved scroll and anthemion arms, drop in seat on double sabre supports. 62cm wide x 52cm deep x 94cm high.

*Provenance: The contents of a Chelsea Mansion furnished by Nicky Haslam and Collette van den Thillart.*

*Further information on the Dawsons website article here* **£200-300**





## The Contents of a Chelsea Mansion, Thu, 13 January 2022 10:00

- 51 A pair of 20th century five scone black iron candelabra table lamps, each with faux candles and tasselled parchment half shades. (2) 52cm wide x 97cm high.

*Provenance: The contents of a Chelsea Mansion furnished by Nicky Haslam and Collette van den Thillart.*  
Further information on the Dawsons website article here **£200-300**



- 52 A pair of North African (possibly Moroccan) style hexagonal painted occasional tables with stop chamfered decoration. (2) 36cm wide x 60cm high.

*Provenance: The contents of a Chelsea Mansion furnished by Nicky Haslam and Collette van den Thillart.*  
Further information on the Dawsons website article here **£200-300**



- 53 Early 19th century Neapolitan school, huntsman and companions in a capriccio landscape within an architectural and floral border. Gouache on paper, now on wooden frame. 85.5cm high x 117cm high.

*Provenance: The contents of a Chelsea Mansion furnished by Nicky Haslam and Collette van den Thillart.*  
Further information on the Dawsons website article here **£150-250**



- 54 A pair of French 19th century embossed and gilt metal wall appliques in the form of hanging fruits (apples/grape vines). 46cm long.

*Provenance: The contents of a Chelsea Mansion furnished by Nicky Haslam and Collette van den Thillart.*  
Further information on the Dawsons website article here **£100-150**



- 55 A 19th century style cast iron eight scone coronet electrolier, in the style of Colza. 86cm diameter.

*Provenance: The contents of a Chelsea Mansion furnished by Nicky Haslam and Collette van den Thillart.*  
Further information on the Dawsons website article here **£300-500**



## The Contents of a Chelsea Mansion, Thu, 13 January 2022 10:00

- 56 An Umberto Asngao 'Progetti' upholstered armchair for Gioiregetti, circa 1990, with polished zebrano and ebonised show frame. 62cm wide x 80cm deep x 107cm.
- Provenance: The contents of a Chelsea Mansion furnished by Nicky Haslam and Collette van den Thillart.*  
Further information on the Dawsons website article here **£100-200**
- 57 A large contemporary clear glass trumpet form vase with knop stem and spreading foot, together with a Murano style square section rippled glass vase. (2) The trumpet vase: 31cm diameter x 40.5cm high.
- Provenance: The contents of a Chelsea Mansion furnished by Nicky Haslam and Collette van den Thillart.*  
Further information on the Dawsons website article here **£100-150**
- 58 A 19th century style composition table lamp of bold lions mask monopodial form on a stepped square socle base with a black and gilt lined card shade. 92cm high.
- Provenance: The contents of a Chelsea Mansion furnished by Nicky Haslam and Collette van den Thillart.*  
Further information on the Dawsons website article here **£80-120**
- 59 A set of four sage coloured Regency style wirework veranda chairs with high arch backs. (4) 58cm wide x 65cm deep x 115cm high.
- Provenance: The contents of a Chelsea Mansion furnished by Nicky Haslam and Collette van den Thillart.*  
Further information on the Dawsons website article here **£300-500**
- 60 A pair of 18th century style scrambled and painted rouge marble topped architectural pediments.(2) 54cm wide x 24cm deep x 81cm high.
- Provenance: The contents of a Chelsea Mansion furnished by Nicky Haslam and Collette van den Thillart.*  
Further information on the Dawsons website article here **£200-300**





## The Contents of a Chelsea Mansion, Thu, 13 January 2022 10:00

- 61 A George III style carved and beaded re-entrant rectangular wall mirror with entablature corners. 82cm wide x 122cm long. At the waist: 62cm wide.

*Provenance: The contents of a Chelsea Mansion furnished by Nicky Haslam and Collette van den Thillart.*  
Further information on the Dawsons website article here **£150-250**



- 62 A large circular two handled woven willow country house log basket, together with a tall wickerwork rectangular umbrella stand. (2) The circular basket: 74cm diameter x 60cm high.

*Provenance: The contents of a Chelsea Mansion furnished by Nicky Haslam and Collette van den Thillart.*  
Further information on the Dawsons website article here **£150-250**



- 63 A George III polished brass serpentine fire curb, pierced with scrolling decoration, together with a set of three wrought iron fire side tools. (4) The curb: 107cm long

*Provenance: The contents of a Chelsea Mansion furnished by Nicky Haslam and Collette van den Thillart.*  
Further information on the Dawsons website article here **£150-250**



- 64 A George III style black japanned Chinoiserie two-handled bucket, together with a pair of Dutch-style pewter candle lamps and a pair of oxidised metal and clear glass storm candle lamps. (5)

*Provenance: The contents of a Chelsea Mansion furnished by Nicky Haslam and Collette van den Thillart.*  
Further information on the Dawsons website article here **£200-300**



- 65 A George III style two seat sofa with swept arms and square back, with close nail detail raised on ebonised square tapering supports. With loose squab seat. 131cm wide x 75cm deep x 89cm high.

*Provenance: The contents of a Chelsea Mansion furnished by Nicky Haslam and Collette van den Thillart.*  
Further information on the Dawsons website article here **£200-300**



## The Contents of a Chelsea Mansion, Thu, 13 January 2022 10:00

- 66 A set of seven George III style carved wood and gilt plaster wall brackets of fan form, two with larger platform tops. With acanthus drop finials. (7) 23cm wide x 13cm deep x 20cm high.

*Provenance: The contents of a Chelsea Mansion furnished by Nicky Haslam and Collette van den Thillart.*

*Further information on the Dawsons website article here*

**\*\*Please note the blue and white vases are not included in this lot, and there are two additional brackets included, as seen on the second photograph. \*\* £200-300**



- 67 An Edwardian silver and tortoiseshell baloon clock, London, 1909 by William Comyns. With inlaid abalone shell and gold neo-classical decoration. 16.5cm high x 12cm wide x 6cm deep.

*Provenance: The contents of a Chelsea Mansion furnished by Nicky Haslam and Collette van den Thillart.*

*Further information on the Dawsons website article here* **£200-300**



- 68 An early 20th century flame grain mahogany framed canted rectangular wall mirror. 75cm wide x 100cm high.

*Provenance: The contents of a Chelsea Mansion furnished by Nicky Haslam and Collette van den Thillart.*

*Further information on the Dawsons website article here* **£100-200**



- 69 P. Gregorious (19th century school), 'Russian Marmot', watercolour on paper displaying male and female examples, framed and glazed. Overall: 49cm x 44.5cm wide

*Provenance: The contents of a Chelsea Mansion furnished by Nicky Haslam and Collette van den Thillart.*

*Further information on the Dawsons website article here* **£80-120**



- 70 A George IV style ebonised and parcel gilt circular low table on square tapering fluted supports, terminating in cup swivel castors. 76cm diameter x 46cm high.

*Provenance: The contents of a Chelsea Mansion furnished by Nicky Haslam and Collette van den Thillart.*

*Further information on the Dawsons website article here* **£100-150**





## The Contents of a Chelsea Mansion, Thu, 13 January 2022 10:00

- 71 An early 20th century carved ebonised and parcel gilt Aesthetic movement design circular pedstal table, on three column supports with scrolled feet. 55cm diameter x 69cm high.

*Provenance: The contents of a Chelsea Mansion furnished by Nicky Haslam and Collette van den Thillart.*  
Further information on the Dawsons website article here **£80-120**



- 72 A pair of contemporary black japanned metal folding circular champagne/wine cooler stands with swing loop handles.(2) 36cm diameter x 71cm high.

*Provenance: The contents of a Chelsea Mansion furnished by Nicky Haslam and Collette van den Thillart.*  
Further information on the Dawsons website article here **£80-120**



- 73 A pair of French Regence style pine throne chairs with high stuff over distressed tan leather backs and seats with close nail detail. On double scrolled framed bases. (2) 62cm wide x 74cm deep x 120cm high.

*Provenance: The contents of a Chelsea Mansion furnished by Nicky Haslam and Collette van den Thillart.*  
Further information on the Dawsons website article here **£200-300**



- 74 A pair of French Regence style pine throne chairs with high stuff over distressed tan leather backs and seats with close nail detail. On double scrolled framed bases. (2) 62cm wide x 74cm deep x 120cm high.

*Provenance: The contents of a Chelsea Mansion furnished by Nicky Haslam and Collette van den Thillart.*  
Further information on the Dawsons website article here **£200-300**



- 75 A large and impressive simulated birch octagonal dining table of architectural form on large square section moulded pedestal. 167cm diameter x 78cm high.

*Provenance: The contents of a Chelsea Mansion furnished by Nicky Haslam and Collette van den Thillart.*  
Further information on the Dawsons website article here **£200-300**



## The Contents of a Chelsea Mansion, Thu, 13 January 2022 10:00

- 76 A 19th century Chinese engraved rouge lacquer low table with moulded top, the base with moulded frieze on slender cabriole supports. 59cm long x 52cm wide x 44cm high.

*Provenance: The contents of a Chelsea Mansion furnished by Nicky Haslam and Collette van den Thillart.*

*Further information on the Dawsons website article here* **£150-250**



- 77 A late 20th century simulated marble plaster relief roundel depicting the profile bust study of Alexander the Great. 50cm diameter

*Provenance: The contents of a Chelsea Mansion furnished by Nicky Haslam and Collette van den Thillart.*

*Further information on the Dawsons website article here* **£150-250**



- 78 An early 19th century Russian 'Thaula' style five section folding spark guard/fender, each panel of gothic lancet arched form. When standing covers: 147cm wide x 104cm high.

*Provenance: The contents of a Chelsea Mansion furnished by Nicky Haslam and Collette van den Thillart.*

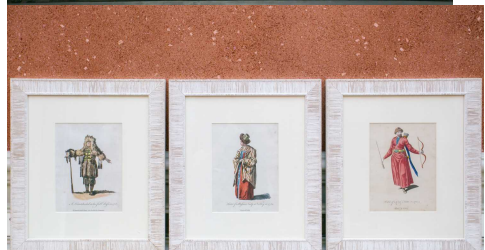
*Further information on the Dawsons website article here* **£200-300**



- 79 A series of three early 19th century hand tinted coloured engravings of 'Habit of a Russian lady at Valday in 1764', together with 'Habit of a Crimean tartar in 1700' and 'Kamtchadal in his full dress in 1768', all decoratively framed and glazed. (3) Overall: 46cm high x 40cm wide.

*Provenance: The contents of a Chelsea Mansion furnished by Nicky Haslam and Collette van den Thillart.*

*Further information on the Dawsons website article here* **£80-120**



- 80 A 20th century La Vere Francais cased and etched cameo glass globular vase with stylised lily pad and lotus decoration. 36cm high x 20cm diameter.

*Provenance: The contents of a Chelsea Mansion furnished by Nicky Haslam and Collette van den Thillart.*

*Further information on the Dawsons website article here* **£100-150**





## The Contents of a Chelsea Mansion, Thu, 13 January 2022 10:00

- 81 A 19th century French porcelain vase of rectangular flattened form with white appliques in relief of cavorting cherubs raised on an oval spreading foot. 26cm long x 21.5cm high

*Provenance: The contents of a Chelsea Mansion furnished by Nicky Haslam and Collette van den Thillart.*  
Further information on the Dawsons website article here **£100-150**



- 82 A mid-century art fused glass circular bowl by Michael and Frances Higgins, painted with large radiating daisies, signed Higgins to the rim. 44cm diameter x 11cm deep.

*Provenance: The contents of a Chelsea Mansion furnished by Nicky Haslam and Collette van den Thillart.*  
Further information on the Dawsons website article here **£100-150**



- 83 A 20th century La Vere Francais cased and etched cameo glass slender ovid vase with stylised peonies decoration. 42cm high x 17cm diameter.

*Provenance: The contents of a Chelsea Mansion furnished by Nicky Haslam and Collette van den Thillart.*  
Further information on the Dawsons website article here **£100-150**



- 84 A contemporary glass topped side table in the style of Syrie Maugham with lilac swagged fabric valence, the interior fitted with a series of three open shelves. 138cm long x 55cm deep x 79cm high.

*Provenance: The contents of a Chelsea Mansion furnished by Nicky Haslam and Collette van den Thillart.*  
Further information on the Dawsons website article here **£150-250**



- 85 A George II style architectural form two door painted and parcel gilt pedestal cabinet with moulded and recessed panelled doors, folding side handles and stop fluted pilasters. 100cm wide x 46cm deep x 84cm high.

*Provenance: The contents of a Chelsea Mansion furnished by Nicky Haslam and Collette van den Thillart.*  
Further information on the Dawsons website article here **£150-250**



## The Contents of a Chelsea Mansion, Thu, 13 January 2022 10:00

- 86 A group of 19th and 20th century ceramics to include a Dudson rectangular cheese dish and cover with applied classical designs together with a Meissen onion pattern cream jug, pair of Derby shell shaped dessert dishes etc. (7) The cheese dish: 23cm long.

*Provenance: The contents of a Chelsea Mansion furnished by Nicky Haslam and Collette van den Thillart.*

*Further information on the Dawsons website article here* **£100-150**



- 87 A collection of four Rye Pottery figures including a gardener, pastry cook, chef and lady with flowers. (4) The tallest: 28cm high.

*Provenance: The contents of a Chelsea Mansion furnished by Nicky Haslam and Collette van den Thillart.*

*Further information on the Dawsons website article here* **£100-150**



- 88 A set of three 20th century Chinese porcelain stylised male figures in national dress, together with a sang de boeuf style stoneware vase with a spurious mark to base and a black jappanned and chinoiserie tea cannister with cover. (5) The figures each: 30cm high.

*Provenance: The contents of a Chelsea Mansion furnished by Nicky Haslam and Collette van den Thillart.*

*Further information on the Dawsons website article here* **£100-150**



- 89 A group of three 20th century oval decorative jappanned gallery serving trays. One decorated with rouge ground and gilt chinoiserie decoration. (3) The largest: 69cm long x 51cm deep.

*Provenance: The contents of a Chelsea Mansion furnished by Nicky Haslam and Collette van den Thillart.*

*Further information on the Dawsons website article here* **£100-150**



- 90 A 19th century Pontypool or Usk rectangular black jappanned toleware two handled tray decorated with strawberry plants and birds, together with a reproduction rectangular canted corner black lacquered tray. (2) The toleware tray: 72cm x 55cm.

*Provenance: The contents of a Chelsea Mansion furnished by Nicky Haslam and Collette van den Thillart.*

*Further information on the Dawsons website article here* **£100-200**



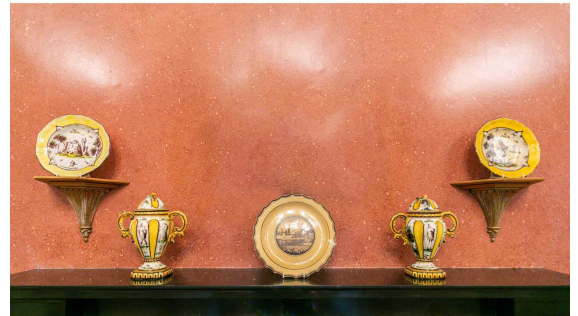


## The Contents of a Chelsea Mansion, Thu, 13 January 2022 10:00

- 91 A collection of Italian decorative ceramics to include an early 19th century creamware scallop edged plate painted en-grisaille with romantic landscape together with a pair of Savona Faience two handled vases and covers and a pair of Italian faience dishes. (5) The creamware plate: 28cm diameter.

*Provenance: The contents of a Chelsea Mansion furnished by Nicky Haslam and Collette van den Thillart.*

*Further information on the Dawsons website article here* **£100-150**



- 92 A Russian 'Thula' style brushed steel and mesh spark guard with cupid's bow outline on simple strap feet. 87cm wide x 90cm tall.

*Provenance: The contents of a Chelsea Mansion furnished by Nicky Haslam and Collette van den Thillart.*

*Further information on the Dawsons website article here* **£100-150**



- 93 A contemporary eau de nil velvet covered cove kneehole desk fitted with six pedestal drawers and a deep cupboard drawer on a marbled blind plinth. 165cm wide x 85cm deep x 76cm high.

*Provenance: The contents of a Chelsea Mansion furnished by Nicky Haslam and Collette van den Thillart.*

*Further information on the Dawsons website article here* **£250-350**



- 94 A contemporary oxidised steel table lamp with applied flowering rose sprigs, together with another similar by the same hand-mounted with oak branch and acorns, both with cream shades. (2) 69cm high.

*Provenance: The contents of a Chelsea Mansion furnished by Nicky Haslam and Collette van den Thillart.*

*Further information on the Dawsons website article here* **£100-150**



- 95 A contemporary wrought iron strapwork table lamp of urn form with cream shade. 78cm high.

*Provenance: The contents of a Chelsea Mansion furnished by Nicky Haslam and Collette van den Thillart.*

*Further information on the Dawsons website article here* **£80-120**



## The Contents of a Chelsea Mansion, Thu, 13 January 2022 10:00

- 96 A George III style pierced brass serpentine fire curb together with a smaller brushed steel example. (2) The brass curb: 132cm long **£80-120**



- 97 A pair of Louis XV style painted and distressed bedside tables with cupboard superstructure with lift out moulded trays. (2) 60cm wide x 62cm deep x 74cm high.

*Provenance: The contents of a Chelsea Mansion furnished by Nicky Haslam and Collette van den Thillart.*

*Further information on the Dawsons website article here* **£200-300**



- 98 A Louis Philippe style painted and distressed banquette with stuff over velvet upholstery on a moulded and turned legged base. 180cm long x 41cm deep x 53cm deep.

*Provenance: The contents of a Chelsea Mansion furnished by Nicky Haslam and Collette van den Thillart.*

*Further information on the Dawsons website article here* **£150-250**



- 99 A contemporary cut velvet and silk covered rectangular altar table, the covers lifting to reveal multiple shallow shelves. 235cm long x 63cm deep x 83cm high.

*Provenance: The contents of a Chelsea Mansion furnished by Nicky Haslam and Collette van den Thillart.*

*Further information on the Dawsons website article here* **£150-250**



- 100 An emperor sized stepped arch cream padded fabric headboard, together with associated fabric valence. The headboard: 201cm wide x 156cm high.

*Provenance: The contents of a Chelsea Mansion furnished by Nicky Haslam and Collette van den Thillart.*

*Further information on the Dawsons website article here* **£100-150**





## The Contents of a Chelsea Mansion, Thu, 13 January 2022 10:00

- 101 A contemporary fabric covered side chair with shaped back in the style of Syrie Maugham, with applied bowed ribbon detail and contrasting fabric valence. 52cm wide x 60cm deep x 86cm high.

*Provenance: The contents of a Chelsea Mansion furnished by Nicky Haslam and Collette van den Thillart.*

*Further information on the Dawsons website article here* **£80-120**



- 102 A contemporary fabric covered inverted breakfront backed kneehole dressing table with cartouche shaped adjustable mirror with chintz upholstery, two frieze drawers above shaped fitted cupboards below. Together with a Louis XVI style stained wood dressing stool, similarly upholstered. (2) The table: 125cm long x 257cm deep x 176cm high.

*Provenance: The contents of a Chelsea Mansion furnished by Nicky Haslam and Collette van den Thillart.*

*Further information on the Dawsons website article here* **£200-300**



- 103 A contemporary fabric covered side chair with shaped back in the style of Syrie Maugham, with stuff over, piped and buttoned fabric and lapett valence, together with a three drawer contemporary bedside cabinet. (2) 39cm wide x 32cm deep x 92cm high.

*Provenance: The contents of a Chelsea Mansion furnished by Nicky Haslam and Collette van den Thillart.*

*Further information on the Dawsons website article here* **£50-80**



- 104 A 19th century copper and brass oval two handled wine cooler with removal zinc liner, together a small bronze shell. (2) The wine cooler 45cm long x 36cm deep x 23cm high.

*Provenance: The contents of a Chelsea Mansion furnished by Nicky Haslam and Collette van den Thillart.*

*Further information on the Dawsons website article here* **£80-120**



- 105 A set of four white painted composition Hollywood Regency style urns of two handled form on stepped square base, possibly after Syrie Maughan. (4) 45cm high x 25cm wide.

*Provenance: The contents of a Chelsea Mansion furnished by Nicky Haslam and Collette van den Thillart.*

*Further information on the Dawsons website article here* **£150-250**



## The Contents of a Chelsea Mansion, Thu, 13 January 2022 10:00

- 106 A contemporary chromed steel and grey leather upholstered armchair, with floating arms, possibly by Gina B & Company. 55cm wide x 65cm deep x 94cm high.

*Provenance: The contents of a Chelsea Mansion furnished by Nicky Haslam and Collette van den Thillart.  
Further information on the Dawsons website article here **£100-150***

- 107 An air force grey painted and spun brass Anglepoise 12-27 adjustable desk lamp.

*Provenance: The contents of a Chelsea Mansion furnished by Nicky Haslam and Collette van den Thillart.  
Further information on the Dawsons website article here **£50-80***



- 108 A contemporary French style gilt bronze and quarter-veneered kingwood topped urn table of small proportions 40cm long x 26cm deep x 43cm high.

*Provenance: The contents of a Chelsea Mansion furnished by Nicky Haslam and Collette van den Thillart.  
Further information on the Dawsons website article here **£80-120***



- 109 A Regency painted faux bamboo soiree chair with pierced Gothic splat bars, with split cane panel seat and splayed turn supports. 42cm wide x 38cm deep x 84cm high.

*Provenance: The contents of a Chelsea Mansion furnished by Nicky Haslam and Collette van den Thillart.  
Further information on the Dawsons website article here **£100-150***



- 110 A 20th century double ended banquette with stuff over textured bronze upholstery on ebonised swept sabre supports. 135cm long x 57cm deep x 67cm high.

*Provenance: The contents of a Chelsea Mansion furnished by Nicky Haslam and Collette van den Thillart.  
Further information on the Dawsons website article here **£100-150***





## The Contents of a Chelsea Mansion, Thu, 13 January 2022 10:00

- 111 A pair of Art Deco style silver plated wicket form table lamps with cream angular shades. (2) 68cm high.
- Provenance: The contents of a Chelsea Mansion furnished by Nicky Haslam and Collette van den Thillart.*  
Further information on the Dawsons website article here **£80-120**
- 112 A large Chinese blue and white porcelain ovoid jar and cover with spear finial, painted throughout with chou symbols. 55cm high x 30cm diameter.
- Provenance: The contents of a Chelsea Mansion furnished by Nicky Haslam and Collette van den Thillart.*  
Further information on the Dawsons website article here **£100-150**
- 113 A pair of contemporary slender baluster bubble glass twin-light table lamps by Donghia, each with etched signature on the base. Each with distressed conical silk covered shades. (2) 80cm high.
- Provenance: The contents of a Chelsea Mansion furnished by Nicky Haslam and Collette van den Thillart.*  
Further information on the Dawsons website article here **£100-150**
- 114 A contemporary figured marble topped side table of slab construction on an architectural leather covered base. 161cm wide x 57cm deep x 77cm high
- Provenance: The contents of a Chelsea Mansion furnished by Nicky Haslam and Collette van den Thillart.*  
Further information on the Dawsons website article here **£200-300**
- 115 An Empire design brass strung and inlaid bergère de bureau, the revolving seat stuff over upholstery and close nail detailing supported on turned tapering supports united by a cross stretcher. 57cm wide x 65cm deep x 86cm high.
- Provenance: The contents of a Chelsea Mansion furnished by Nicky Haslam and Collette van den Thillart.*  
Further information on the Dawsons website article here **£150-250**



## The Contents of a Chelsea Mansion, Thu, 13 January 2022 10:00

- 116 A pair of George III style mahogany circular topped lamp tables with architectural bases. (2) 42cm diameter x 64cm high.

*Provenance: The contents of a Chelsea Mansion furnished by Nicky Haslam and Collette van den Thillart.*  
Further information on the Dawsons website article here **£100-150**



- 117 A pair of oxidised metal table lamps of sprouting lotus form on square socles, each with pleated shades. (2) Each 77cm high.

*Provenance: The contents of a Chelsea Mansion furnished by Nicky Haslam and Collette van den Thillart.*  
Further information on the Dawsons website article here **£100-150**



- 118 A contemporary curved backed mahogany two seater sofa, with broad striped stuff over fabric on square tapering architectural feet. 130cm wide x 86cm deep x 83cm high.

*Provenance: The contents of a Chelsea Mansion furnished by Nicky Haslam and Collette van den Thillart.*  
Further information on the Dawsons website article here **£100-150**



- 119 A group of six hand painted oil on canvas trompe l'oeil runs of book bindings with various humorous inscriptions, of varying size. (6) The largest: 62.5cm x 26cm.

*Provenance: The contents of a Chelsea Mansion furnished by Nicky Haslam and Collette van den Thillart.*  
Further information on the Dawsons website article here **£80-120**



- 120 A pair of 18th century copper plate engravings depicting Frederick Christian II, Duke of Schleswig-Holstein-Sonderburg-Augustenburg and Princess Louise Augusta of Denmark together with a French 19th century botanical ornithological watercolour within a embossed mount, signed indistinctly, together with another decorative print. (4) The pair of portraits: 29cm x 21.5cm.

*Provenance: The contents of a Chelsea Mansion furnished by Nicky Haslam and Collette van den Thillart.*  
Further information on the Dawsons website article here **£50-80**





## The Contents of a Chelsea Mansion, Thu, 13 January 2022 10:00

- 121 A pair of decorative ribbed cocoon form table lamps with patinated bronze square bases, together an oval brass strung travertine marble jewellery box. (3) The lamps: 24cm high.

*Provenance: The contents of a Chelsea Mansion furnished by Nicky Haslam and Collette van den Thillart.*

*Further information on the Dawsons website article here* **£100-150**



- 122 A large contemporary Venetian style blue bubble glass coup tazza, together with a emerald green blown glass water jug and a French tin glazed earthenware rustic confit pot. The tazza: 41cm diameter x 28cm high.

*Provenance: The contents of a Chelsea Mansion furnished by Nicky Haslam and Collette van den Thillart.*

*Further information on the Dawsons website article here* **£100-150**



- 123 A George III carved oak tripod wine table with relief carved fruiting vines to the top, on an urn column on similarly carved cabriole supports. 65cm diameter x 72cm high.

*Provenance: The contents of a Chelsea Mansion furnished by Nicky Haslam and Collette van den Thillart.*

*Further information on the Dawsons website article here* **£100-150**



- 124 A pair of 18th-century architectural studies one of a cloistered cathedral interior, the other of an Italianate doorway with military figures, both within moulded wood and gilt gesso frames. (2) The cathedral interior: 76cm high x 60.5cm wide. Provenance: the Italianate print with a label for Christie's Sale 5748, Lot 501, 13/1/05 (The David Style Collection).

*Provenance: The contents of a Chelsea Mansion furnished by Nicky Haslam and Collette van den Thillart.*

*Further information on the Dawsons website article here* **£100-150**



- 125 A Regency lyre form cast iron boot scraper on oval tray base with four cast lions paw feet, together with a Georgian style bell form cast iron door porter. (2) The boot scraper: 33cm long x 26cm wide x 33cm high.

*Provenance: The contents of a Chelsea Mansion furnished by Nicky Haslam and Collette van den Thillart.*

*Further information on the Dawsons website article here* **£100-150**



## The Contents of a Chelsea Mansion, Thu, 13 January 2022 10:00

- 126 A late 18th century creamware basket, probably by Leeds pottery with rope twisted handles, together with an early 19th century Derby porcelain dessert serving dish with Imari style decoration. (2) The basket: 31cm wide x 10cm tall.

*Provenance: The contents of a Chelsea Mansion furnished by Nicky Haslam and Collette van den Thillart.*

*Further information on the Dawsons website article here* **£100-150**



- 127 A contemporary Italian silver cruet stand by Italia Sacchi, formed of a woven silver basket with conforming silver topped bottles, together with a mid-century stylised mother of pearl fish with silver gilt mounted decoration. (2) The cruet: 13.5cm diameter x 14cm high.

*Provenance: The contents of a Chelsea Mansion furnished by Nicky Haslam and Collette van den Thillart.*

*Further information on the Dawsons website article here* **£80-120**



- 128 A contemporary hand blown and etched vase of bulbous form, signed Oscar de la Renta, together with a Venetian/Murano style handkerchief vase with mottled decoration. (2) The clear vase: 24cm high.

*Provenance: The contents of a Chelsea Mansion furnished by Nicky Haslam and Collette van den Thillart.*

*Further information on the Dawsons website article here* **£80-120**



- 129 A pair of safari style wooden stools or side tables with plank form supports:

*Provenance: The contents of a Chelsea Mansion furnished by Nicky Haslam and Collette van den Thillart.*

*Further information on the Dawsons website article here* **£80-120**



- 130 A mid-century art fused glass circular bowl by Michael and Frances Higgins, painted with large radiating daisies, signed Higgins to the rim. (2)

*Provenance: The contents of a Chelsea Mansion furnished by Nicky Haslam and Collette van den Thillart.*

*Further information on the Dawsons website article here* **£100-150**

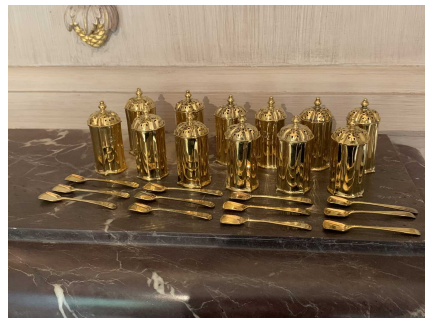




## The Contents of a Chelsea Mansion, Thu, 13 January 2022 10:00

- 131 A set of twelve silver gilt pepperettes by Mappin & Webb, London, 1910, together with twelve conforming salt shovels/spoons. (24) Total weight: 386g.

*Provenance: The contents of a Chelsea Mansion furnished by Nicky Haslam and Collette van den Thillart.*  
*Further information on the Dawsons website article here* **£200-300**



- 132 A group of four contemporary watercolours, depicting a kitchen, drawing room, bedroom and library, unrealised proposals for the interiors of a Chelsea mansion. Watercolour on paper, apparently unsigned, each mounted overall: 50 cm x 68 cm. (4)

*Provenance: The contents of a Chelsea Mansion furnished by Nicky Haslam and Collette van den Thillart.*  
*Further information on the Dawsons website article here* **£80-120**

